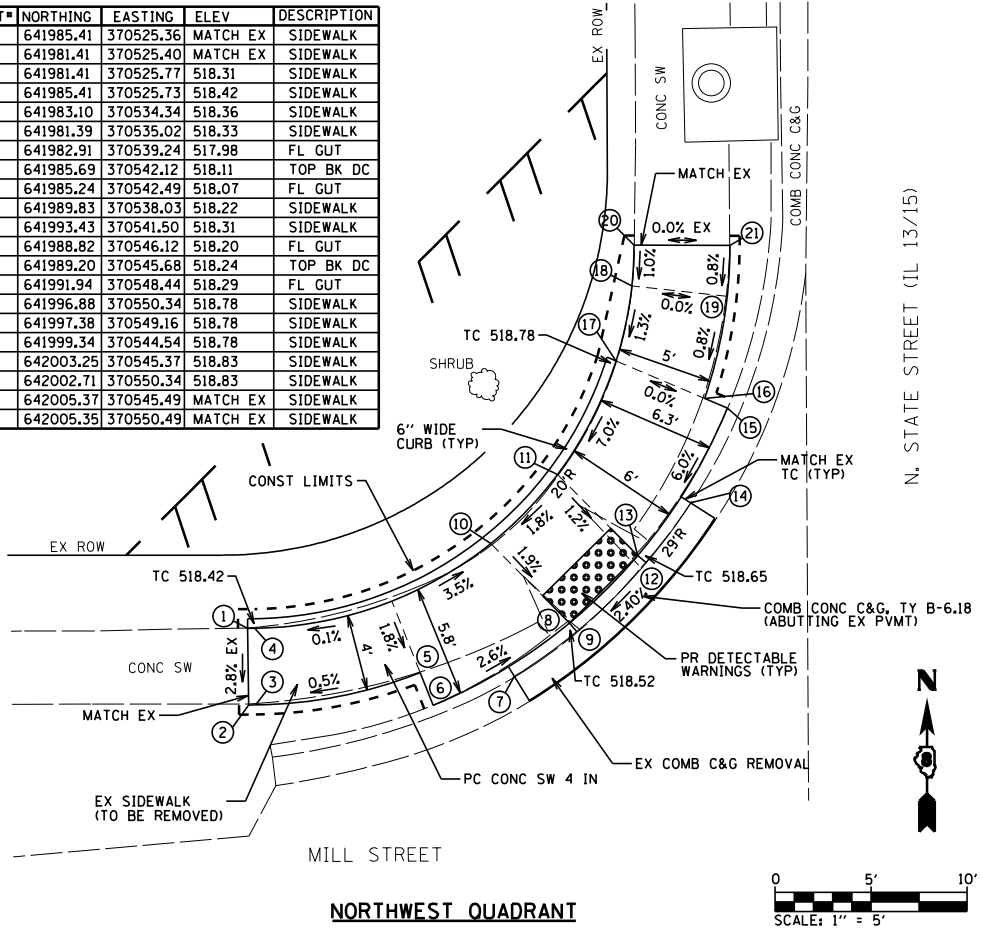
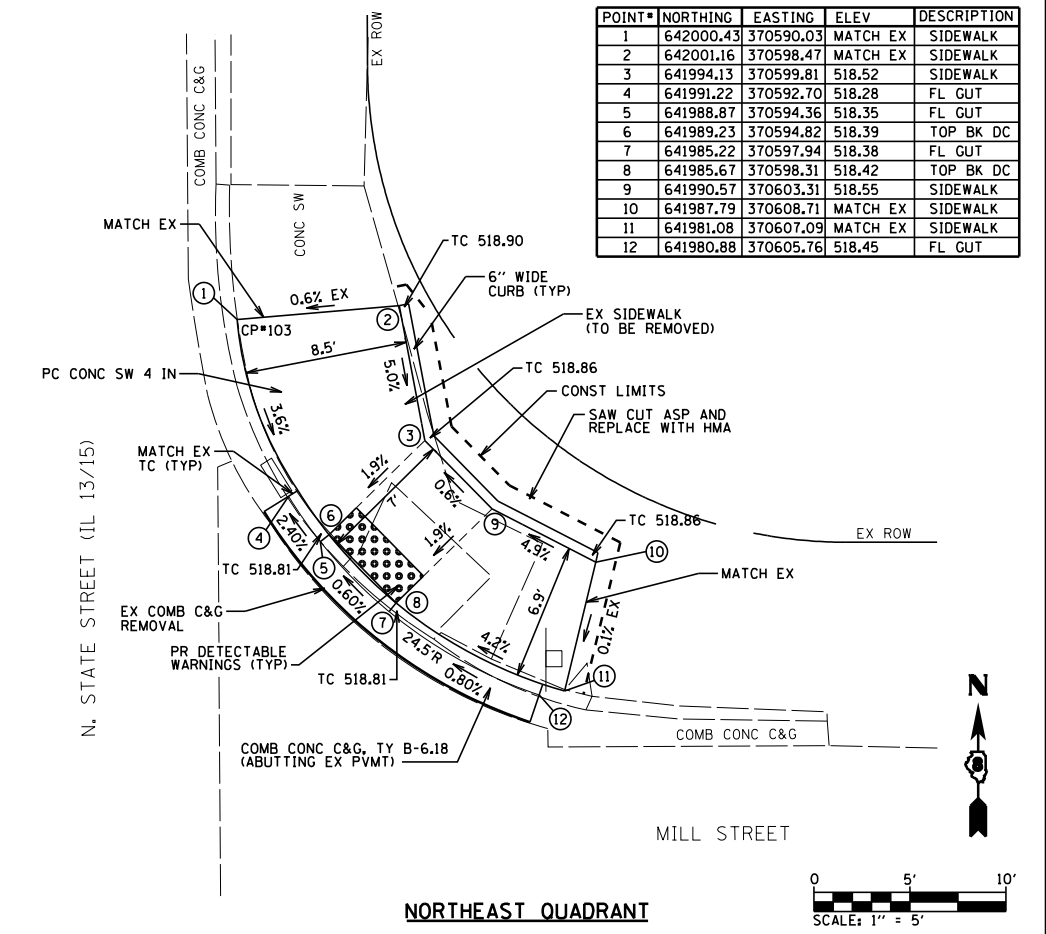


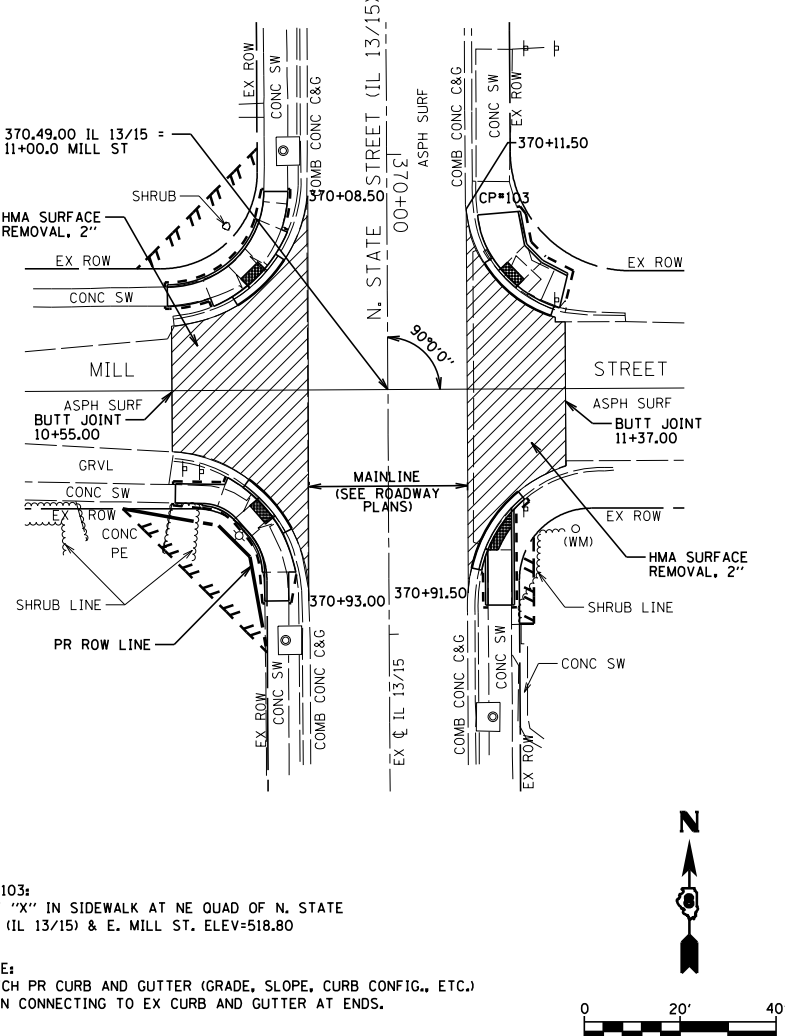
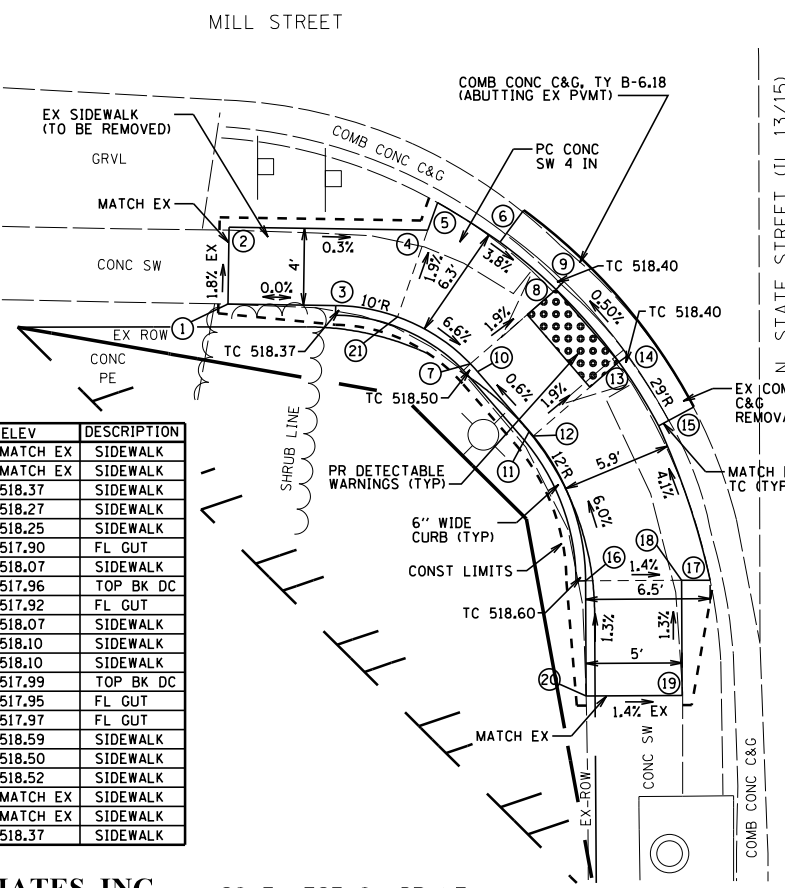
| POINT# | NORTHING | EASTING | ELEV | DESCRIPTION |
|--------|-----------|-----------|----------|-------------|
| 1 | 641985.41 | 370525.36 | MATCH EX | SIDEWALK |
| 2 | 641981.41 | 370525.40 | MATCH EX | SIDEWALK |
| 3 | 641981.41 | 370525.77 | 518.31 | SIDEWALK |
| 4 | 641985.41 | 370525.73 | 518.42 | SIDEWALK |
| 5 | 641983.10 | 370534.34 | 518.36 | SIDEWALK |
| 6 | 641981.39 | 370535.02 | 518.33 | SIDEWALK |
| 7 | 641982.91 | 370539.24 | 517.98 | FL GUT |
| 8 | 641985.69 | 370542.12 | 518.11 | TOP BK DC |
| 9 | 641985.24 | 370542.49 | 518.07 | FL GUT |
| 10 | 641989.83 | 370538.03 | 518.22 | SIDEWALK |
| 11 | 641993.43 | 370541.50 | 518.31 | SIDEWALK |
| 12 | 641988.82 | 370546.12 | 518.20 | FL GUT |
| 13 | 641989.20 | 370545.68 | 518.24 | TOP BK DC |
| 14 | 641991.94 | 370548.44 | 518.29 | FL GUT |
| 15 | 641996.88 | 370550.34 | 518.78 | SIDEWALK |
| 16 | 641997.38 | 370549.16 | 518.78 | SIDEWALK |
| 17 | 641999.34 | 370544.54 | 518.78 | SIDEWALK |
| 18 | 642003.25 | 370545.37 | 518.83 | SIDEWALK |
| 19 | 642002.71 | 370550.34 | 518.83 | SIDEWALK |
| 20 | 642005.37 | 370545.49 | MATCH EX | SIDEWALK |
| 21 | 642005.35 | 370550.49 | MATCH EX | SIDEWALK |



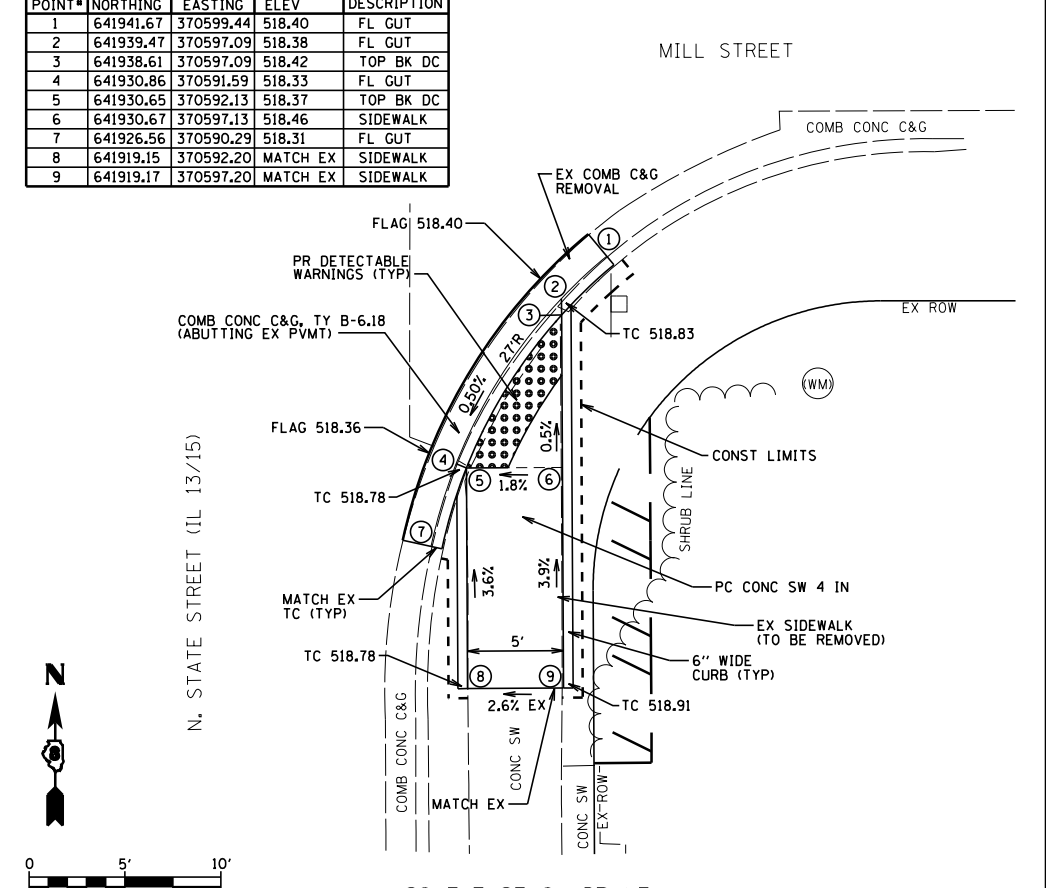
| POINT# | NORTHING | EASTING | ELEV | DESCRIPTION |
|--------|-----------|-----------|----------|-------------|
| 1 | 642000.43 | 370590.03 | MATCH EX | SIDEWALK |
| 2 | 642001.16 | 370598.47 | MATCH EX | SIDEWALK |
| 3 | 641994.13 | 370599.81 | 518.52 | SIDEWALK |
| 4 | 641991.22 | 370592.70 | 518.28 | FL GUT |
| 5 | 641988.87 | 370594.36 | 518.35 | FL GUT |
| 6 | 641989.23 | 370594.82 | 518.39 | TOP BK DC |
| 7 | 641985.22 | 370597.94 | 518.38 | FL GUT |
| 8 | 641985.67 | 370598.31 | 518.42 | TOP BK DC |
| 9 | 641990.57 | 370603.31 | 518.55 | SIDEWALK |
| 10 | 641987.79 | 370608.71 | MATCH EX | SIDEWALK |
| 11 | 641981.08 | 370607.09 | MATCH EX | SIDEWALK |
| 12 | 641980.88 | 370605.76 | 518.45 | FL GUT |



| POINT# | NORTHING | EASTING | ELEV | DESCRIPTION |
|--------|-----------|-----------|----------|-------------|
| 1 | 641940.43 | 370527.03 | MATCH EX | SIDEWALK |
| 2 | 641944.43 | 370527.09 | MATCH EX | SIDEWALK |
| 3 | 641940.34 | 370532.64 | 518.37 | SIDEWALK |
| 4 | 641944.27 | 370537.44 | 518.27 | SIDEWALK |
| 5 | 641945.71 | 370537.94 | 518.25 | SIDEWALK |
| 6 | 641944.11 | 370541.55 | 517.90 | FL GUT |
| 7 | 641937.31 | 370539.66 | 518.07 | SIDEWALK |
| 8 | 641941.17 | 370544.12 | 517.96 | TOP BK DC |
| 9 | 641941.59 | 370544.53 | 517.92 | FL GUT |
| 10 | 641936.89 | 370540.04 | 518.07 | SIDEWALK |
| 11 | 641933.79 | 370542.73 | 518.10 | SIDEWALK |
| 12 | 641933.54 | 370542.94 | 518.10 | SIDEWALK |
| 13 | 641937.40 | 370547.39 | 517.99 | TOP BK DC |
| 14 | 641937.74 | 370547.86 | 517.95 | FL GUT |
| 15 | 641934.35 | 370549.98 | 517.97 | FL GUT |
| 16 | 641925.99 | 370545.66 | 518.59 | SIDEWALK |
| 17 | 641926.03 | 370552.15 | 518.50 | SIDEWALK |
| 18 | 641926.02 | 370550.66 | 518.52 | SIDEWALK |
| 19 | 641920.03 | 370550.69 | MATCH EX | SIDEWALK |
| 20 | 641920.00 | 370545.69 | MATCH EX | SIDEWALK |
| 21 | 641939.75 | 370535.86 | 518.37 | SIDEWALK |



| POINT# | NORTHING | EASTING | ELEV | DESCRIPTION |
|--------|-----------|-----------|----------|-------------|
| 1 | 641941.67 | 370599.44 | 518.40 | FL GUT |
| 2 | 641939.47 | 370597.09 | 518.38 | FL GUT |
| 3 | 641938.61 | 370597.09 | 518.42 | TOP BK DC |
| 4 | 641930.86 | 370591.59 | 518.33 | FL GUT |
| 5 | 641930.65 | 370592.13 | 518.37 | TOP BK DC |
| 6 | 641930.67 | 370597.13 | 518.46 | SIDEWALK |
| 7 | 641926.56 | 370590.29 | 518.31 | FL GUT |
| 8 | 641919.15 | 370592.20 | MATCH EX | SIDEWALK |
| 9 | 641919.17 | 370597.20 | MATCH EX | SIDEWALK |



BENTON & ASSOCIATES, INC.

SOUTHWEST QUADRANT

**STATE OF ILLINOIS
DEPARTMENT OF TRANSPORTATION**

**ADA SIDEWALK PLAN (FREEBURG)
FAP ROUTE 103 (IL RTE 13 / 15)**

FILE NAME = P:\102166-34\FAP 103 (IL 13-IL 15) Sec 12
25,38,561RS 76J16\CADD Sheets\0876J16-shr-
Default

USER NAME = suser*
DRAWN
PLOT SCALE = 40.0000' / in.
PLOT DATE = 4/30/2019

DESIGNED - MGM
CHECKED - WJS
DATE - 2/2019

REVISED - 4/30/2019 MGM
REVISED -
REVISED -
REVISED -

SCALE: SHEET 10 OF 25 SHEETS STA. TO STA.

F.A.P. RTE. 103 SECTION (27,25,38,561)RS COUNTY ST. CLAIR TOTAL SHEETS 87 SHEET NO. 61 ILLINOIS FED. AID PROJECT CONTRACT NO. 76J16