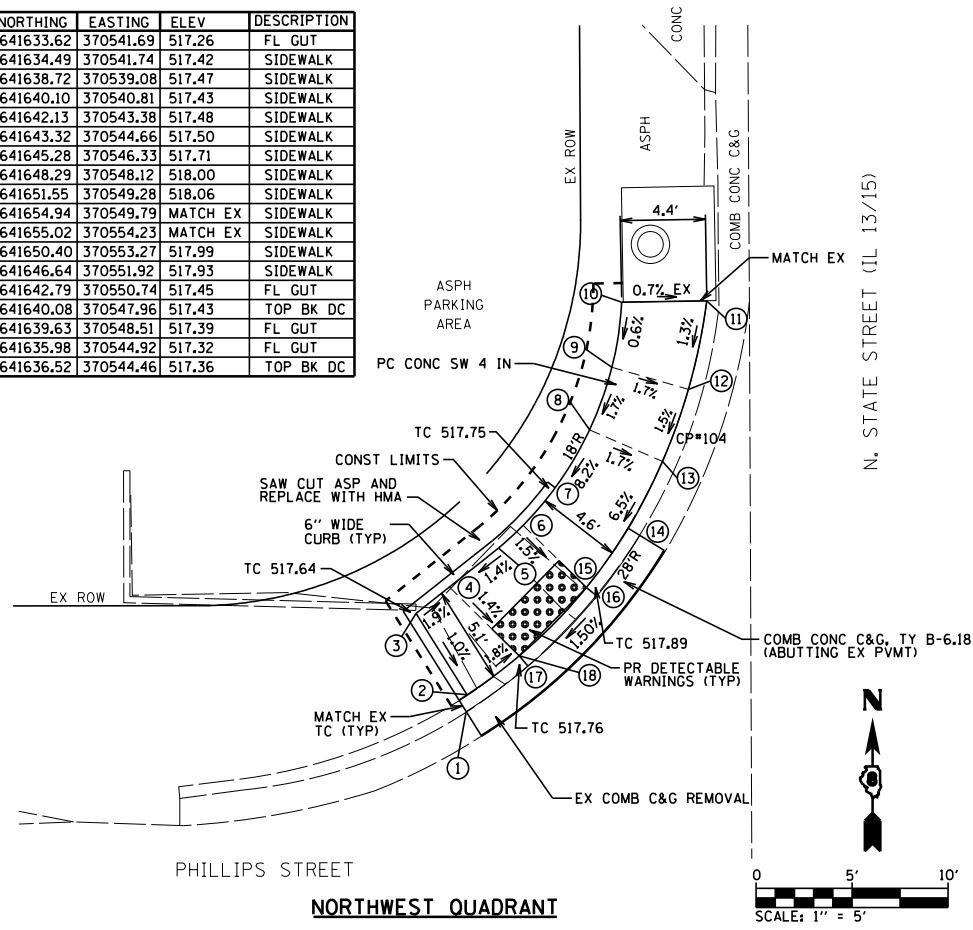
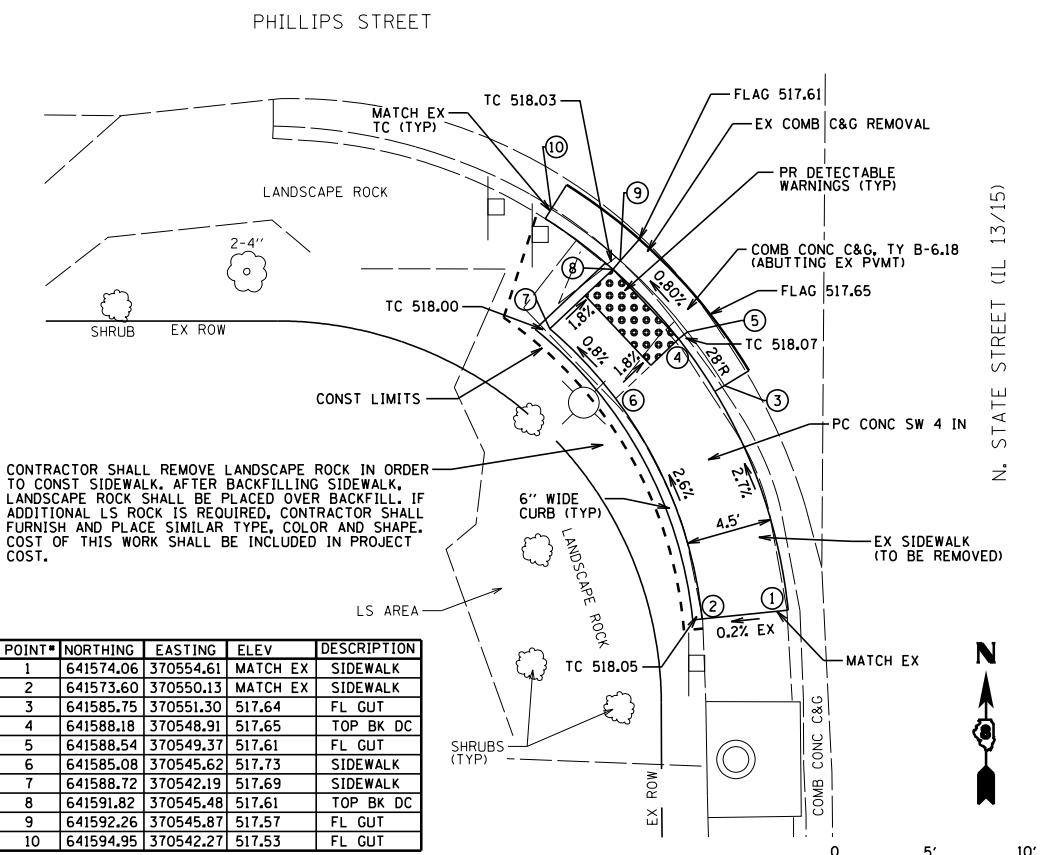
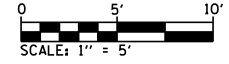


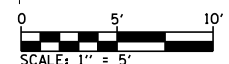
POINT#	NORTHING	EASTING	ELEV	DESCRIPTION
1	641633.62	370541.69	517.26	FL GUT
2	641634.49	370541.74	517.42	SIDEWALK
3	641638.72	370539.08	517.47	SIDEWALK
4	641640.10	370540.81	517.43	SIDEWALK
5	641642.13	370543.38	517.48	SIDEWALK
6	641643.32	370544.66	517.50	SIDEWALK
7	641645.28	370546.33	517.71	SIDEWALK
8	641648.29	370548.12	518.00	SIDEWALK
9	641651.55	370549.28	518.06	SIDEWALK
10	641654.94	370549.79	MATCH EX	SIDEWALK
11	641655.02	370554.23	MATCH EX	SIDEWALK
12	641650.40	370553.27	517.99	SIDEWALK
13	641646.64	370551.92	517.93	SIDEWALK
14	641642.79	370550.74	517.45	FL GUT
15	641640.08	370547.96	517.43	TOP BK DC
16	641639.63	370548.51	517.39	FL GUT
17	641635.98	370544.92	517.32	FL GUT
18	641636.52	370544.46	517.36	TOP BK DC



**NORTHWEST QUADRANT**

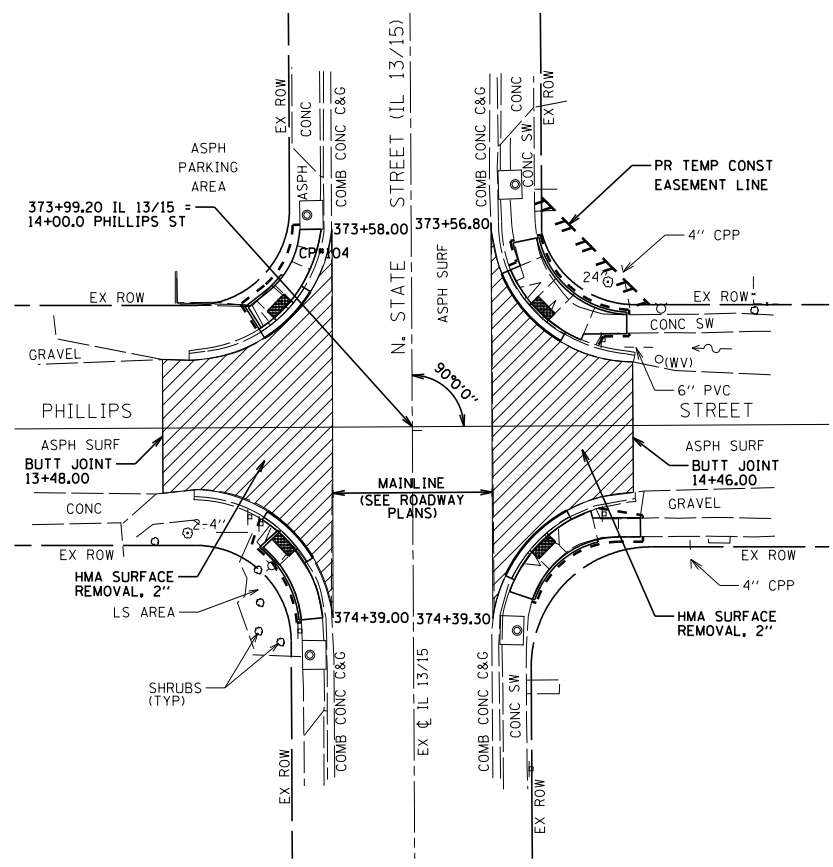


**SOUTHWEST QUADRANT**



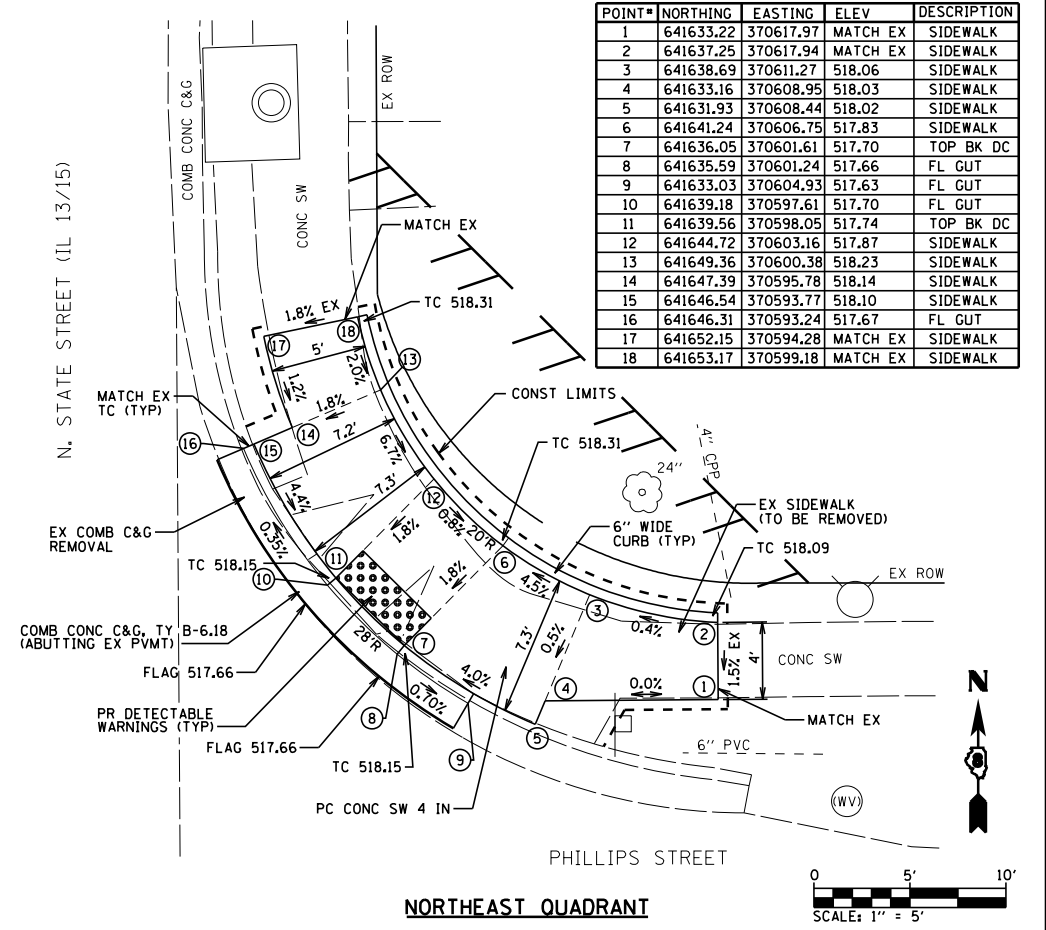
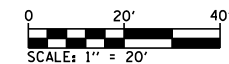
POINT#	NORTHING	EASTING	ELEV	DESCRIPTION
1	641574.06	370554.61	MATCH EX	SIDEWALK
2	641573.60	370550.13	MATCH EX	SIDEWALK
3	641585.75	370551.30	517.64	FL GUT
4	641588.18	370548.91	517.65	TOP BK DC
5	641588.54	370549.37	517.61	FL GUT
6	641585.08	370545.62	517.73	SIDEWALK
7	641588.72	370542.19	517.69	SIDEWALK
8	641591.82	370545.48	517.61	TOP BK DC
9	641592.26	370545.87	517.57	FL GUT
10	641594.95	370542.27	517.53	FL GUT

**BENTON & ASSOCIATES, INC.**

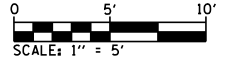


CP#104:  
MAG NAIL IN ASPHALT AT NW QUAD OF N. STATE ST. (IL 13/15) & W. PHILLIPS ST. ELEV=517.88

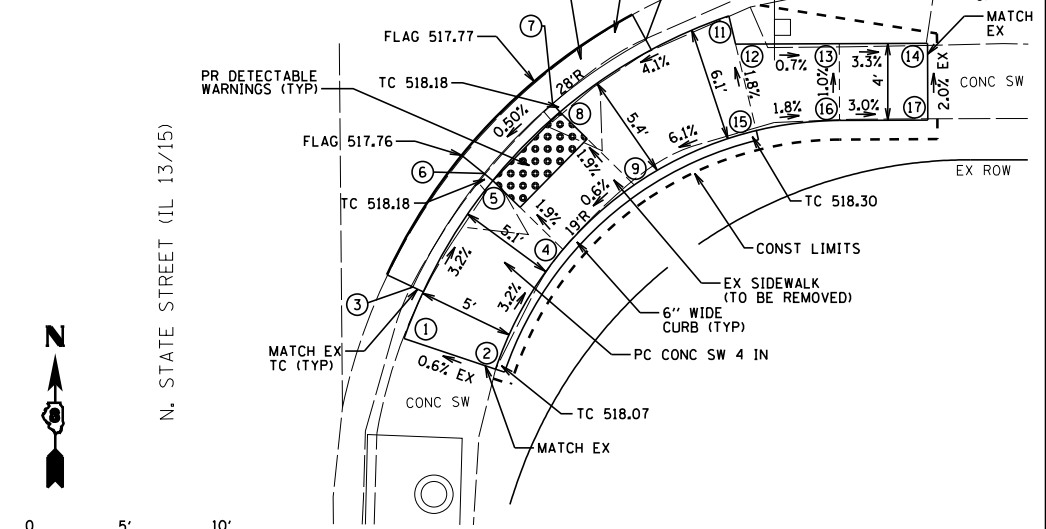
NOTE:  
MATCH PR CURB AND GUTTER (GRADE, SLOPE, CURB CONFIG., ETC.) WHEN CONNECTING TO EX CURB AND GUTTER AT ENDS.



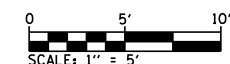
**NORTHEAST QUADRANT**



POINT#	NORTHING	EASTING	ELEV	DESCRIPTION
1	641579.49	370593.53	MATCH EX	SIDEWALK
2	641577.89	370598.29	MATCH EX	SIDEWALK
3	641582.17	370593.99	517.67	FL GUT
4	641584.13	370601.81	517.84	SIDEWALK
5	641587.72	370598.15	517.74	TOP BK DC
6	641588.09	370597.70	517.70	FL GUT
7	641591.73	370601.27	517.73	FL GUT
8	641591.29	370601.66	517.77	TOP BK DC
9	641587.49	370605.52	517.87	SIDEWALK
10	641595.05	370606.13	517.76	FL GUT
11	641596.30	370610.45	518.19	SIDEWALK
12	641594.82	370610.80	518.22	SIDEWALK
13	641594.85	370616.19	518.18	SIDEWALK
14	641594.87	370620.79	MATCH EX	SIDEWALK
15	641590.33	370611.88	518.30	SIDEWALK
16	641590.85	370616.21	518.22	SIDEWALK
17	641590.87	370620.81	MATCH EX	SIDEWALK



**SOUTHEAST QUADRANT**



**STATE OF ILLINOIS  
DEPARTMENT OF TRANSPORTATION**

**ADA SIDEWALK PLAN (FREEBURG)  
FAP ROUTE 103 (IL RTE 13 / 15)**

FILE NAME = P:\102166-34\FAP 103 (IL 13-15) Sec 12  
Default

USER NAME = suser\*  
DESIGNED - MGM  
DRAWN - SDW  
CHECKED - WJS  
DATE - 2/2019

REVISED -  
REVISED -  
REVISED -  
REVISED -

SCALE: SHEET 11 OF 25 SHEETS STA. TO STA.

F.A.P. RTE. 103 SECTION (27.25,38.56)IRS COUNTY ST. CLAIR TOTAL SHEETS 87 SHEET NO. 62  
CONTRACT NO. 76J16 ILLINOIS FED. AID PROJECT