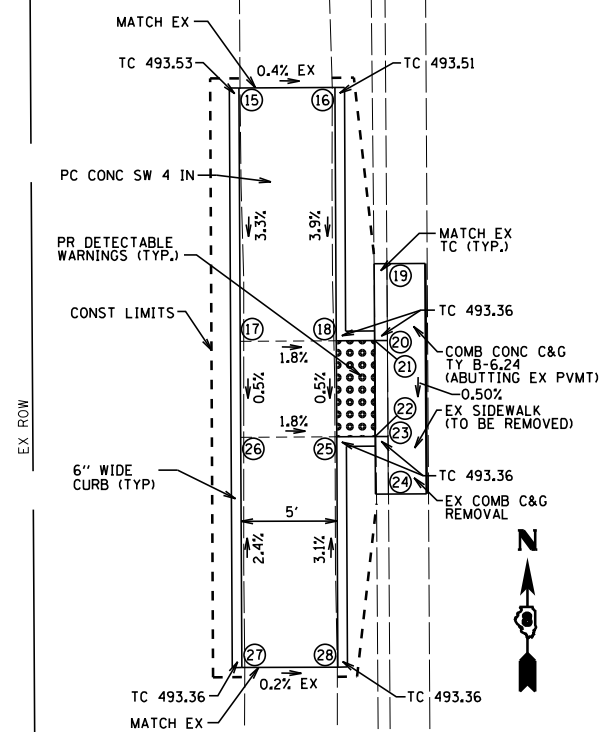
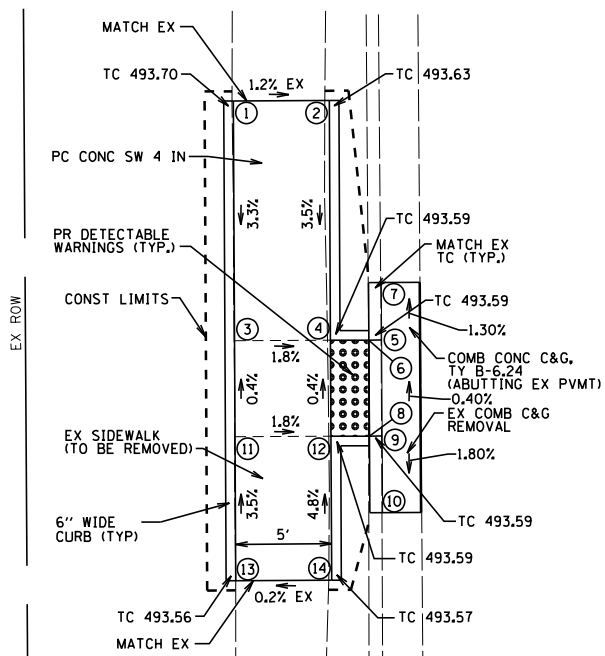
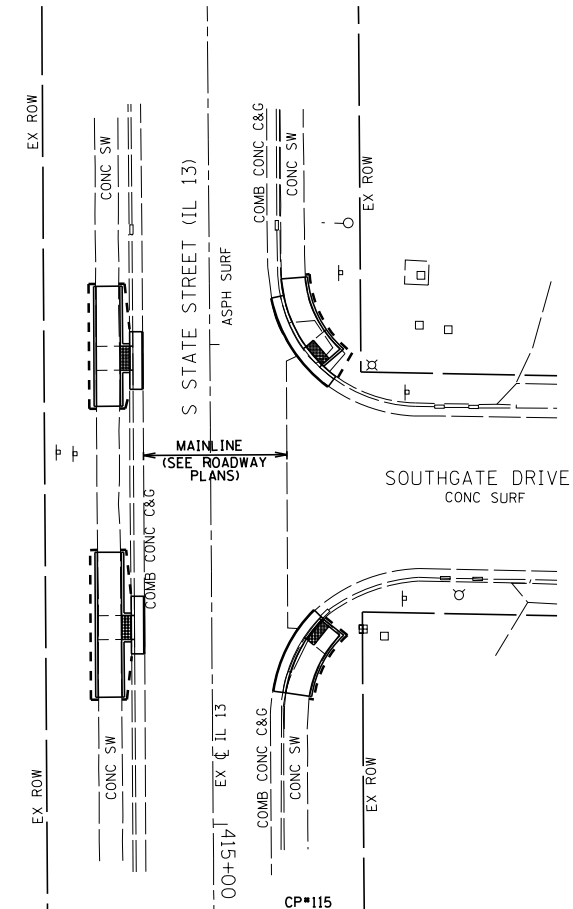
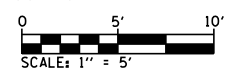


POINT#	NORTHING	EASTING	ELEV	DESCRIPTION
1	637626.50	370553.41	MATCH EX	SIDEWALK
2	637626.53	370558.41	MATCH EX	SIDEWALK
3	637614.00	370553.48	493.28	SIDEWALK
4	637614.03	370558.48	493.19	SIDEWALK
5	637614.04	370561.15	493.12	FL GUT
6	637614.04	370560.48	493.16	TOP BK DC
7	637617.04	370561.13	493.08	FL GUT
8	637609.04	370560.51	493.18	TOP BK DC
9	637609.04	370561.17	493.14	FL GUT
10	637605.04	370561.19	493.07	FL GUT
11	637609.00	370553.51	493.30	SIDEWALK
12	637609.03	370558.51	493.21	SIDEWALK
13	637601.50	370553.55	MATCH EX	SIDEWALK
14	637601.53	370558.55	MATCH EX	SIDEWALK
15	637571.07	370553.70	MATCH EX	SIDEWALK
16	637571.09	370558.70	MATCH EX	SIDEWALK
17	637557.87	370553.77	493.09	SIDEWALK
18	637557.89	370558.77	493.00	SIDEWALK
19	637561.91	370561.42	492.95	FL GUT
20	637557.91	370561.44	492.93	FL GUT
21	637557.90	370560.77	492.97	TOP BK DC
22	637552.90	370560.80	492.95	TOP BK DC
23	637552.91	370561.47	492.91	FL GUT
24	637549.91	370561.48	492.89	FL GUT
25	637552.89	370558.80	492.98	SIDEWALK
26	637552.87	370553.80	493.07	SIDEWALK
27	637540.87	370553.86	MATCH EX	SIDEWALK
28	637540.89	370558.86	MATCH EX	SIDEWALK



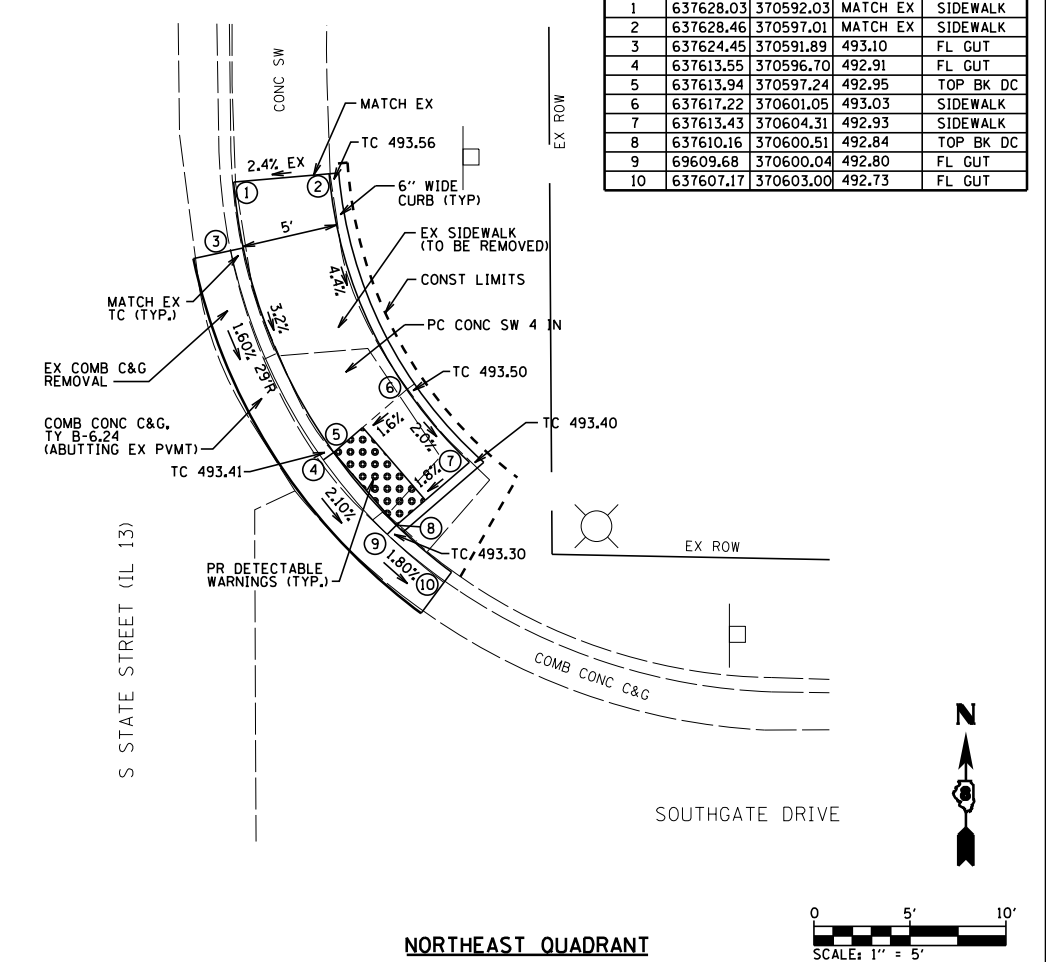
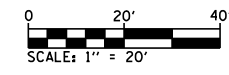
**WEST QUADRANT**



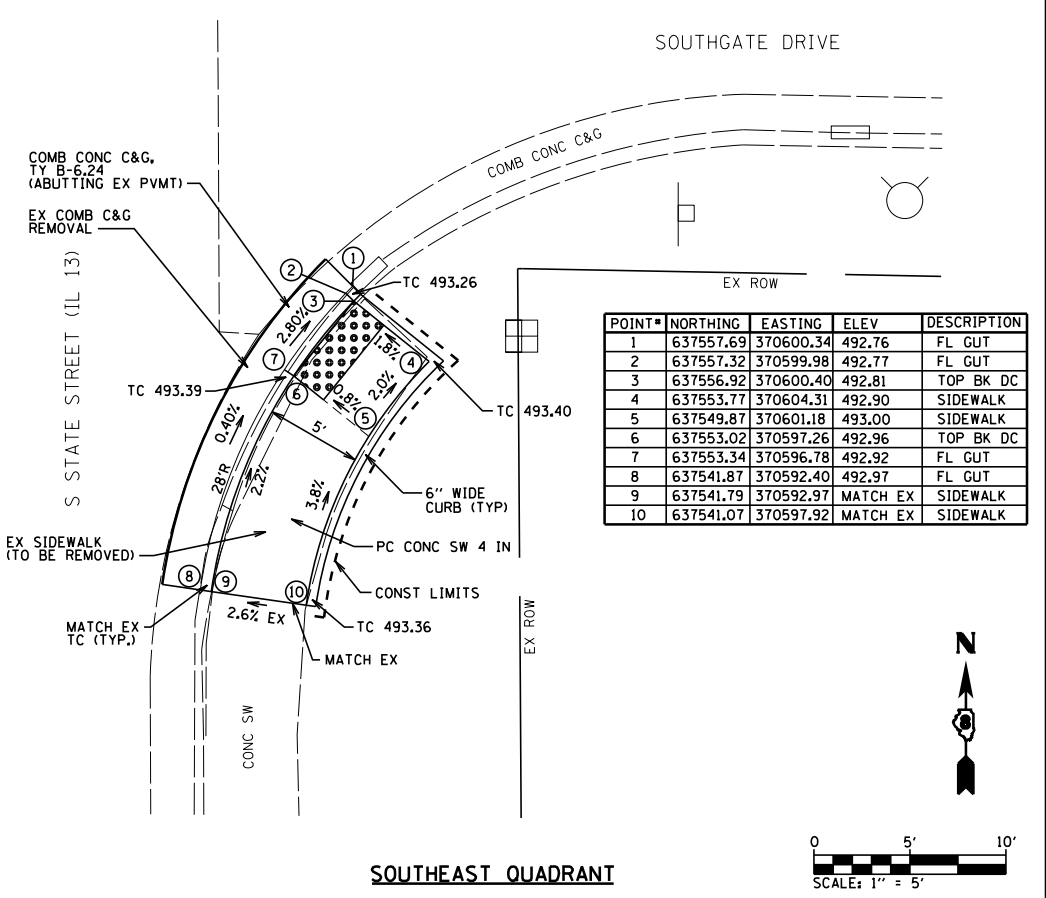
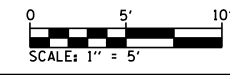
CP\*115  
CUT "X" IN SIDEWALK AT SE QUAD OF  
S. STATE ST. (IL 13) & SOUTHGATE DR.  
ELEV=493.36

NOTE:  
R.O.W LINES SHOWN ON IL 13 / 15  
WERE SET USING SPLIT OF FACE-FACE  
OF CURB AND INFORMATION FROM PLAT  
OF HIGHWAYS SECTION 27-IR PROVIDED  
BY IDOT. CROSS STREET R.O.W. WIDTH  
ARE SHOWN FROM ST. CLAIR GIS.

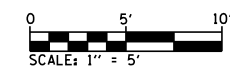
NOTE:  
MATCH PR CURB AND GUTTER (GRADE, SLOPE, CURB CONFIG., ETC.)  
WHEN CONNECTING TO EX CURB AND GUTTER AT ENDS.



**NORTHEAST QUADRANT**



**SOUTHEAST QUADRANT**



POINT#	NORTHING	EASTING	ELEV	DESCRIPTION
1	637628.03	370592.03	MATCH EX	SIDEWALK
2	637628.46	370597.01	MATCH EX	SIDEWALK
3	637624.45	370591.89	493.10	FL GUT
4	637613.55	370596.70	492.91	FL GUT
5	637613.94	370597.24	492.95	TOP BK DC
6	637617.22	370601.05	493.03	SIDEWALK
7	637613.43	370604.31	492.93	SIDEWALK
8	637610.16	370600.51	492.84	TOP BK DC
9	69609.68	370600.04	492.80	FL GUT
10	637607.17	370603.00	492.73	FL GUT

POINT#	NORTHING	EASTING	ELEV	DESCRIPTION
1	637557.69	370600.34	492.76	FL GUT
2	637557.32	370599.98	492.77	FL GUT
3	637556.92	370600.40	492.81	TOP BK DC
4	637553.77	370604.31	492.90	SIDEWALK
5	637549.87	370601.18	493.00	SIDEWALK
6	637553.02	370597.26	492.96	TOP BK DC
7	637553.34	370596.78	492.92	FL GUT
8	637541.87	370592.40	492.97	FL GUT
9	637541.79	370592.97	MATCH EX	SIDEWALK
10	637541.07	370597.92	MATCH EX	SIDEWALK

**BENTON & ASSOCIATES, INC.**

FILE NAME =	USER NAME = \$USER\$	DESIGNED - MGM	REVISED -
P:\102166-34\FAP 103 (IL 13-IL 15) Sec 12	25,38,561RS 76J16\CADD Sheets\0876J16-shr-fre	SDW	REVISED -
Default	PLOT SCALE = 40.0000' / in.	CHECKED - WJS	REVISED -
	PLOT DATE = 2/25/2019	DATE - 2/2019	REVISED -

**STATE OF ILLINOIS  
DEPARTMENT OF TRANSPORTATION**

**ADA SIDEWALK PLAN (FREEBURG)  
FAP ROUTE 103 (IL RTE 13 / 15)**

SCALE: SHEET 22 OF 25 SHEETS STA. TO STA.

F.A.P. RTE.	SECTION	COUNTY	TOTAL SHEETS	SHEET NO.
103	(27,25,38,56)RS	ST. CLAIR	87	73
CONTRACT NO. 76J16				
ILLINOIS FED. AID PROJECT				