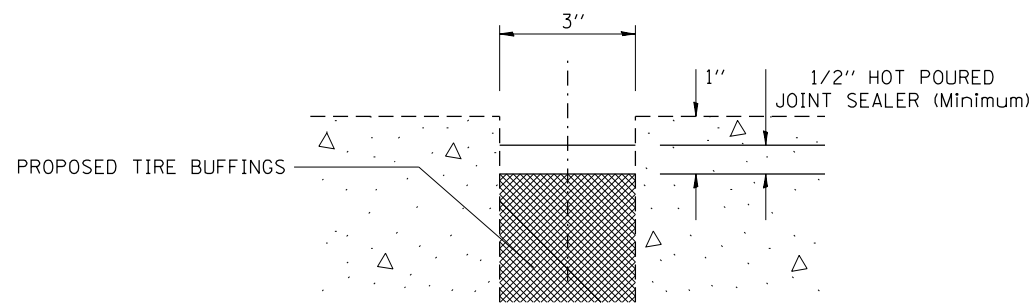
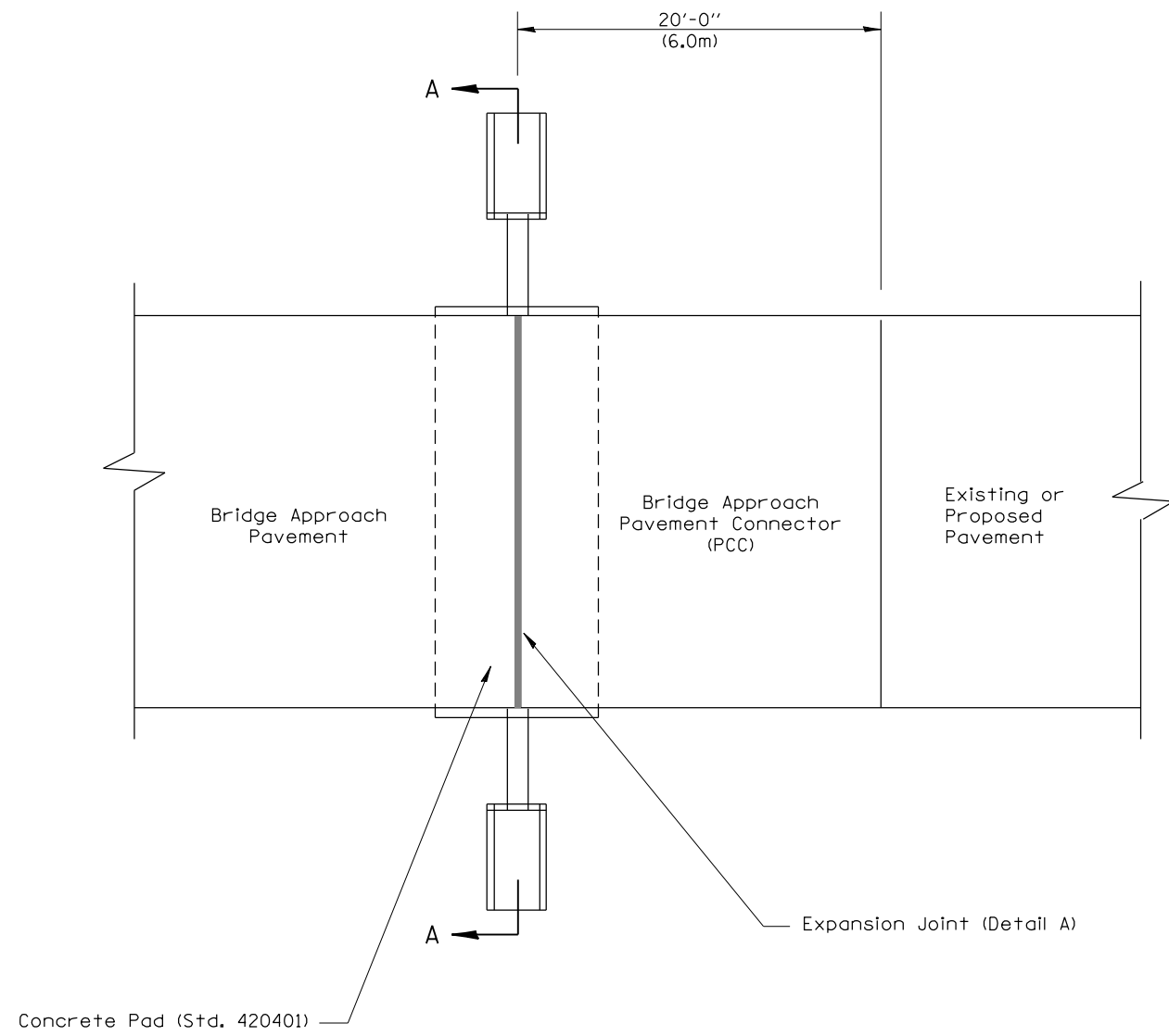
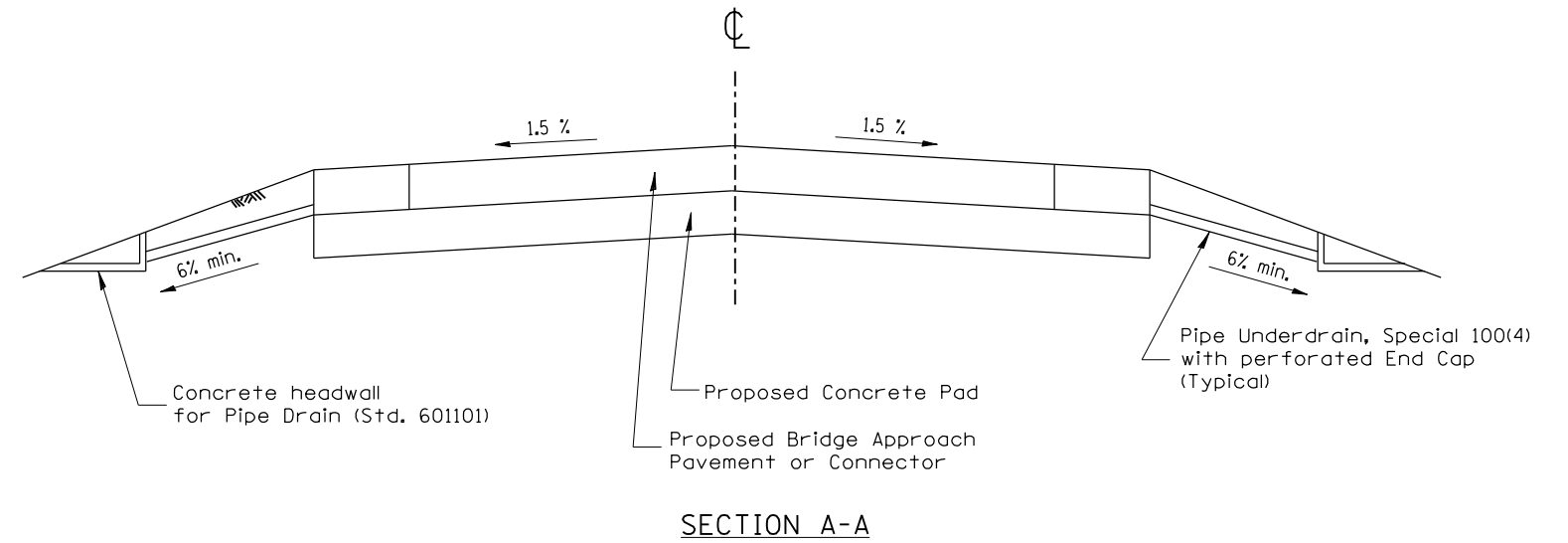


**DESIGNER NOTE:**

1. Include Standards 420001, 601101 and 420401 in plans.
2. Use on bridge projects with PCC connector.
3. Pay for headwalls and UD (spl) 4".



**JOINT DETAIL**



**GENERAL NOTES:**

1. All work shall be done as directed by the Engineer.
2. All work shall be done in accordance with Standard 420401 except as shown herein.
3. The concrete headwalls and pipe underdrain special will be in accordance with Section 601.
4. The bridge approach pavement connector (pcc) shall be constructed similar to section G-G for existing construction rigid pavement as shown Standard 420401. Adjacent to PCC base course or pavement deformed bars will be required. Adjacent to bituminous pavement deformed bars will not be required. Use buffings from the tire retreading industry.
5. This work will be paid for in feet of PIPE UNDERDRAIN, SPECIAL, 4", and each of CONCRETE HEADWALL FOR PIPE DRAIN. The cost of providing and installing the tire buffings and hot-poured joint sealer is included in the cost of the Approach Pavement Connector.
6. Use buffings from the tire retreading industry.
7. Ensure tire buffings are clean, dry, and without any contamination.
8. Remove existing material and replace tire buffings.
9. Place loose buffings and strike off level.
10. Compact buffings by spading with a square-nose shovel.
11. Use hot-poured joint sealer that meets the requirement of Article 1050.02 and according to the applicable section of Article 420.12 of the Standard Specifications.
12. Avoid guardrail posts when constructing shoulders.

All dimensions are in inches (millimeters) unless otherwise noted.

01-01-97	RENUM. H-6.09, NEW REVISION BOX, NOTES	T.P.	08-12-12	UPDATED JOINT MATERIAL TO BUFFINGS	R.D.
02-22-97	REVISED SECTION A-A				
03-01-97	CORRECT STD. NO. IN NOTES	J.A.			
10-16-06	REVISED TO 2007 SPEC.	M.A.			

**STATE OF ILLINOIS  
DEPARTMENT OF TRANSPORTATION**

**BRIDGE APPROACH DETAIL**

NOT TO SCALE

CADD STD. 420401-D4

F.A.P. RTE.	SECTION	COUNTY	TOTAL SHEETS	SHEET NO.
22	48(B-1)BR;CRJ	KNOX	94	63
CONTRACT NO. 68758				
FED. ROAD DIST. NO.		ILLINOIS FED. AID PROJECT		