

SUMMARY OF QUANTITIES

SUMMARY OF QUANTITIES					CONSTRUCTION CODE 80% FEDERAL / 20% LOCAL	
SPLTY	Code Number	Description	Unit	Total Quantity	BIKE PATH	TRAINEES
					0028 URBAN	0042 URBAN
*	25200100	SODDING	SQ YD	8800	8800	
*	25200200	SUPPLEMENTAL WATERING	UNIT	480	480	
	28000260	TEMPORARY EROSION CONTROL SEEDING	POUND	360	360	
	28000400	PERIMETER EROSION BARRIER	FOOT	220	220	
	28000510	INLET FILTERS	EACH	44	44	
	28100203	STONE RIPRAP, CLASS A2	TON	14	14	
	28200200	FILTER FABRIC	SQ YD	18	18	
	30300001	AGGREGATE SUBGRADE IMPROVEMENT	CU YD	100	100	
	30300112	AGGREGATE SUBGRADE IMPROVEMENT 12"	SQ YD	830	830	
	35101600	AGGREGATE BASE COURSE, TYPE B 4"	SQ YD	390	390	
	35102100	AGGREGATE BASE COURSE, TYPE B 9"	SQ YD	5000	5000	
	35300400	PORTLAND CEMENT CONCRETE BASE COURSE 9"	SQ YD	1250	1250	
	40600275	BITUMINOUS MATERIALS (PRIME COAT)	POUND	13500	13500	
	40600290	BITUMINOUS MATERIALS (TACK COAT)	POUND	4000	4000	
	40600400	MIXTURE FOR CRACKS, JOINTS, AND FLANGEWAYS	TON	2	2	
	40602985	HOT-MIX ASPHALT BINDER COURSE IL-9.5, N70	TON	460	460	
	40603085	HOT-MIX ASPHALT BINDER COURSE IL-10.0, N70	TON	460	460	⚠

Drawing File: H:\projects\by_sigs\hanscock\12022208 - 25th avenue hard-ute path phase II\Summary of Quantities.dwg 2/17/2024 - 10:10am



♦ Civil Engineers
 ♦ Municipal Consultants
 ♦ Established 1911

1703 Eastview Road
 Wheeling, IL 60190-2780
 Phone: 708-446-0000
 www.hancock.com

DESIGNED - MWV, AA	REVISED -
DRAWN - DMM, SFB, GD	REVISED - 9-5-24 ⚠
CHECKED - JGG	REVISED -
DATE - 6-17-24	REVISED - 7-17-24

STATE OF ILLINOIS
DEPARTMENT OF TRANSPORTATION

SUMMARY OF QUANTITIES

SCALE: SHEET NO. OF SHEETS STA. TO STA.

F.A.U. RTE.	SECTION	COUNTY	TOTAL SHEETS	SHEET NO.
2714	19-00082-00-BT	COOK	102	6
CONTRACT NO. 51K72			FED. ROAD DIST. NO. 1 ILLINOIS FED. AID PROJECT	

SHEET PROJECT NO. 12022-24601

SUMMARY OF QUANTITIES

SUMMARY OF QUANTITIES					CONSTRUCTION CODE 80% FEDERAL / 20% LOCAL	
SPLTY	Code Number	Description	Unit	Total Quantity	BIKE PATH	TRAINEES
					0028 URBAN	0042 URBAN
	44213204	TIE BARS 3/4"	EACH	1000	1000	
	50200100	STRUCTURE EXCAVATION	CU YD	570	570	
	50300225	CONCRETE STRUCTURES	CU YD	70	70	
	50800205	REINFORCEMENT BARS, EPOXY COATED	POUND	4230	4230	
*	50901720	BICYCLE RAILING	FOOT	431	431	
	52200700	PRECAST MODULAR RETAINING WALL	SQ FT	1327	1327	
	52200800	SEGMENTAL CONCRETE BLOCK WALL	SQ FT	1327	1327	△
	54213672	PRECAST REINFORCED CONCRETE FLARED END SECTION 27"	EACH	1	1	
	550A0130	STORM SEWERS, CLASS A, TYPE 1 27"	FOOT	1000	1000	
	550B0040	STORM SEWERS, CLASS B, TYPE 1 10"	FOOT	440	440	
*	56106300	ADJUSTING WATER MAIN 6"	FOOT	20	20	
*	56400200	FIRE HYDRANTS TO BE MOVED (SPECIAL)	EACH	5	5	
*	56500600	DOMESTIC WATER SERVICE BOXES TO BE ADJUSTED	EACH	2	2	
	60146304	PIPE UNDERDRAINS FOR STRUCTURES 4"	FOOT	431	431	
	60207605	CATCH BASINS, TYPE C, TYPE 8 GRATE	EACH	23	23	
	60221100	MANHOLES, TYPE A, 5'-DIAMETER, TYPE 1 FRAME, CLOSED LID	EACH	18	18	
	60255500	MANHOLES TO BE ADJUSTED	EACH	21	21	

Drawing file: W:\Projects_by_Village\Broadview\2023268 - 25th Avenue Shared-Use Path Phase II\Summary of Quantities.dwg Aug 29, 2024 - 10:59am

HANCOCK ENGINEERING

1875 West
Broadview
Evanston, IL 60201

◆ Civil Engineers 9933 Roosevelt Road
◆ Municipal Consultants Westchester, IL 60154-2790
◆ Established 1911 Phone: 708-463-0900
www.hancock.com

DESIGNED - MWV, AA	REVISED -
DRAWN - DMM, SFB, GD	REVISED - 8-19-24
CHECKED - JGG	REVISED - 8-5-24
DATE - 6-17-24	REVISED - 7-17-24

**STATE OF ILLINOIS
DEPARTMENT OF TRANSPORTATION**

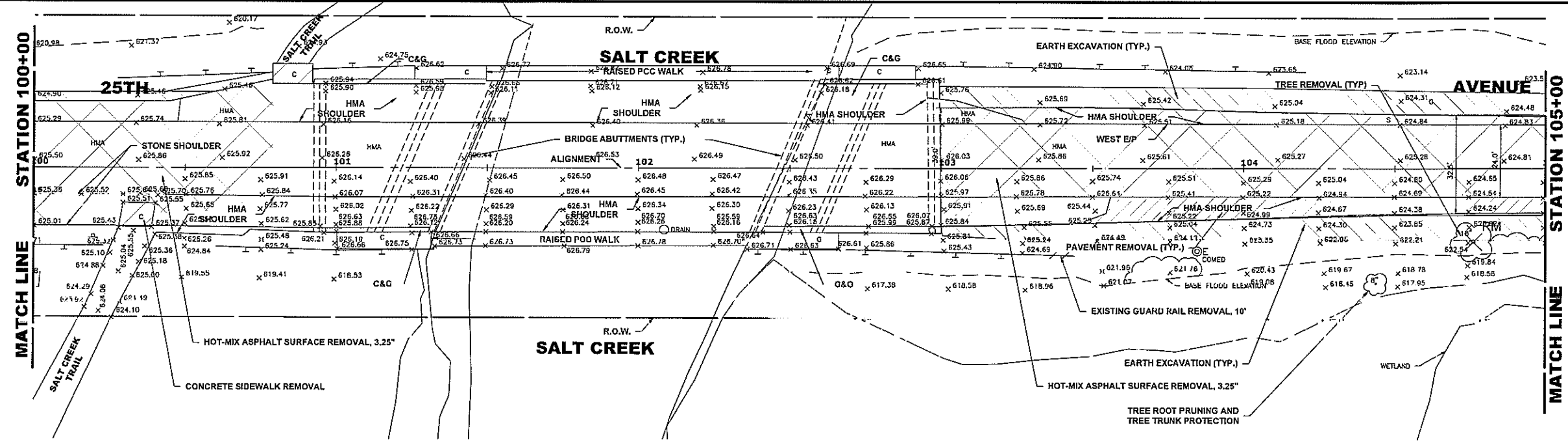
SUMMARY OF QUANTITIES

SCALE: SHEET NO. OF SHEETS STA. TO STA.

F.A.U. RTE. 2714	SECTION 19-00082-00-BT	COUNTY COOK	TOTAL SHEETS 102	SHEET NO. 8
FED. ROAD DIST. NO. 1 ILLINOIS FED. AID PROJECT			CONTRACT NO. 61K72	

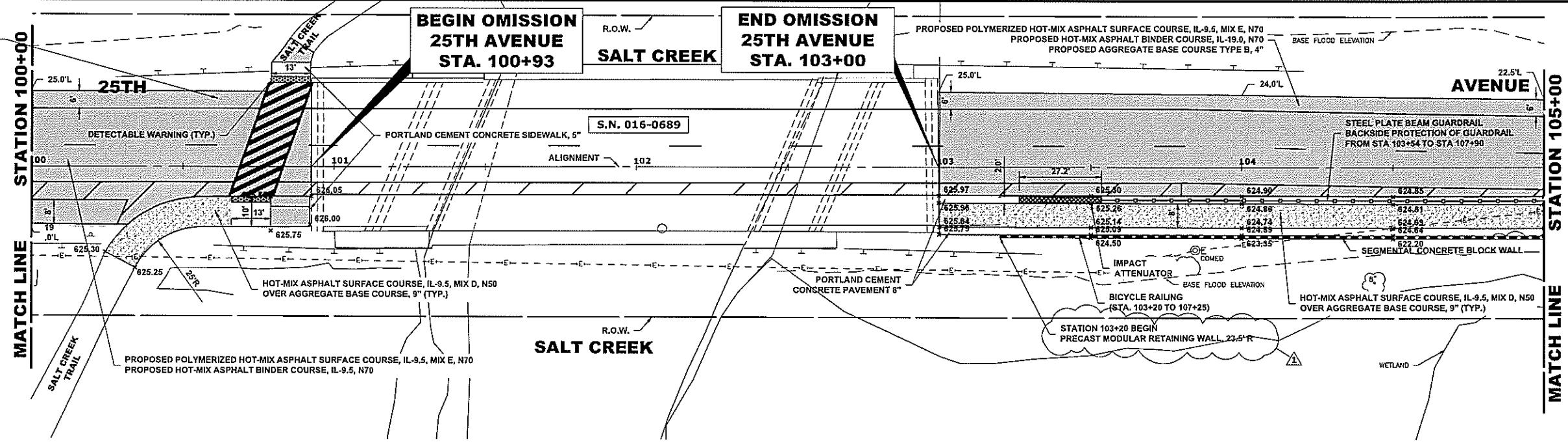
△ REVISED SHEET 8/29/24

E.H.E. PROJECT NO. 130-23-26801



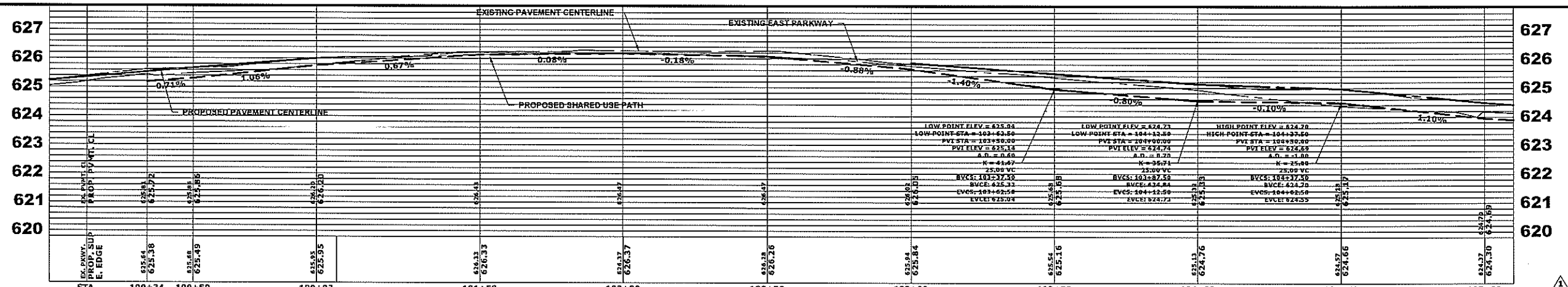
EXISTING TOPOGRAPHY

PROPOSED POLYMERIZED HOT-MIX ASPHALT SURFACE COURSE, IL-9.5, MIX E, N70
 PROPOSED HOT-MIX ASPHALT BINDER COURSE, IL-19.0, N70
 PROPOSED AGGREGATE BASE COURSE TYPE B, 4"



- NOTE:
- 1) ROADWAY WIDENING & RESURFACING FROM STA. 96+40 TO STA. 100+90, AND FROM STA. 103+00 TO STA. 106+50
 - 2) ANY TREES WITHIN THE CLEAR ZONE WIDTH SHALL BE REMOVED
 - 3) YELLOW CENTER PAVEMENT MARKINGS WILL BE PROVIDED ON SHARED USE PATH
SEE PAVEMENT MARKING AND SIGNING PLAN FOR DETAILED DESCRIPTION OF STRIPING
 - 4) SEE PAVEMENT MARKING AND SIGNING PLAN FOR DETAILED DESCRIPTION OF STRIPING

PROPOSED IMPROVEMENT



Drawing file: \\Projects\by_Village\Bioscience\12022626 - 25th Avenue Shared-Use Path Phase 1\DWG\25th Ave Path Updated.dwg Aug 29, 2024 - 8:59am

HANCOCK ENGINEERING
 125 Years of Experience
 Civil Engineers
 Municipal Consultants
 Established 1911
 9933 Roosevelt Road
 Wheeling, IL 60154-2780
 Phone: 708-845-0300
 www.hancock.com

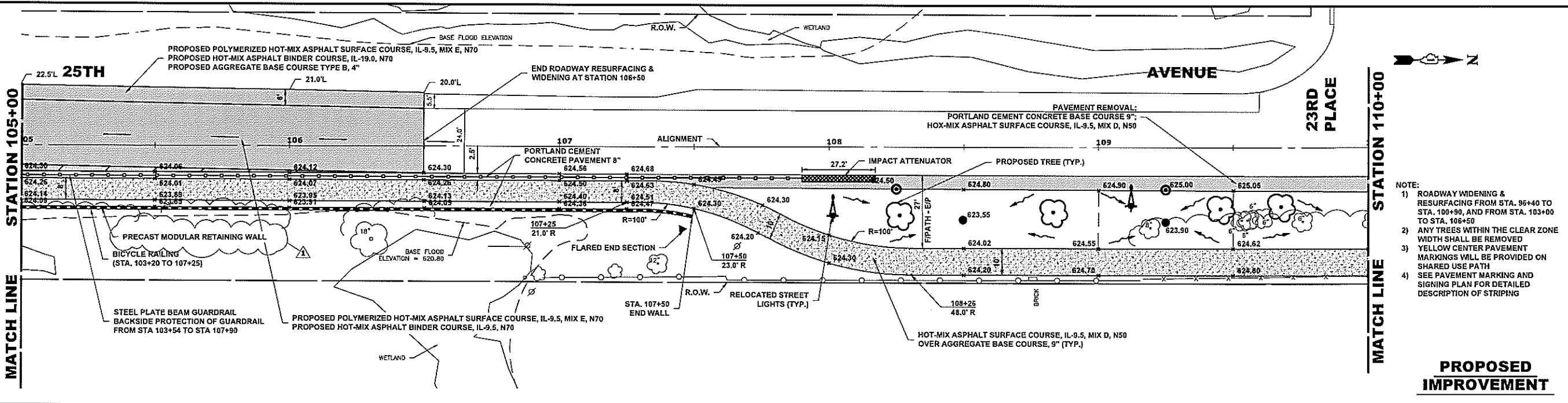
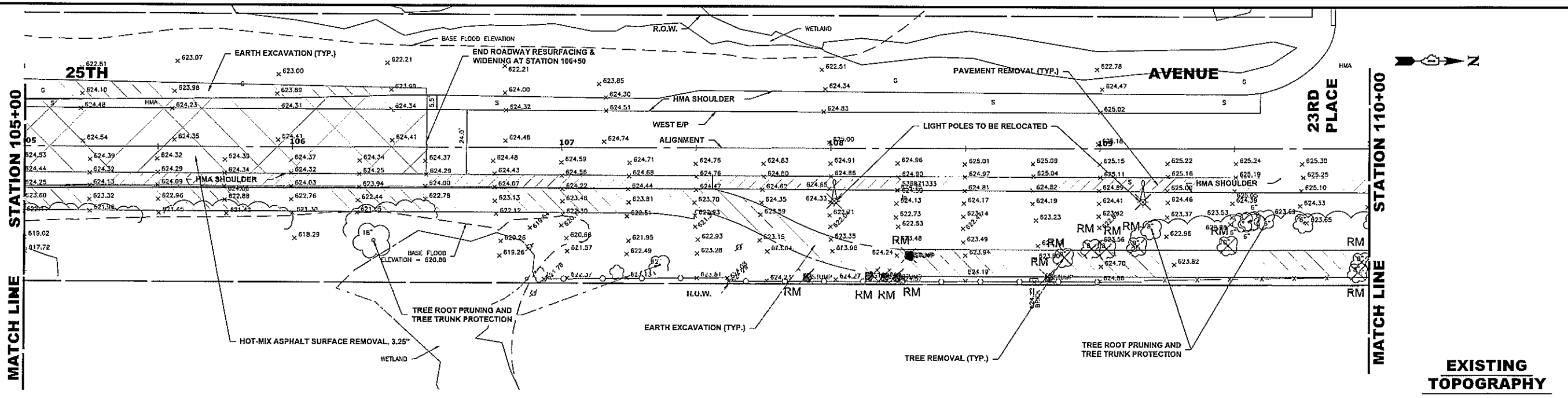
DESIGNED -	MVV, AA	REVISED -	
DRAWN -	DMM, SFB, GD	REVISED -	8-19-24
CHECKED -	JGG	REVISED -	8-5-24
DATE -	6-17-24	REVISED -	7-17-24

STATE OF ILLINOIS DEPARTMENT OF TRANSPORTATION

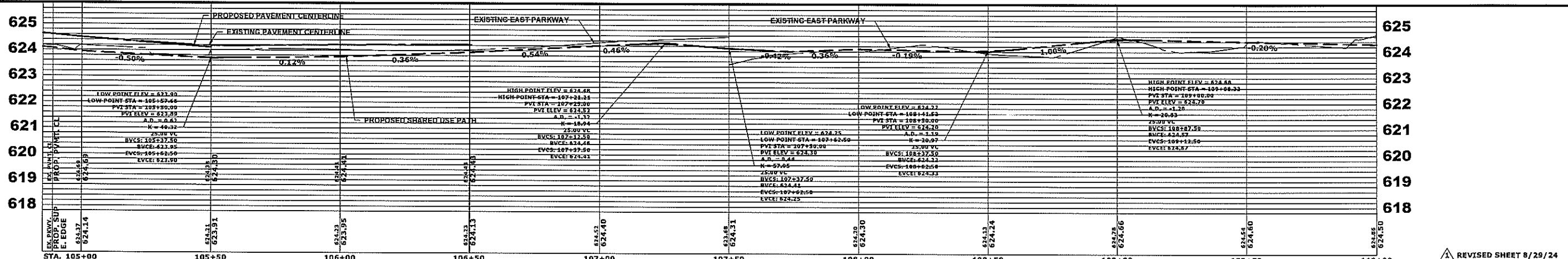
25th AVENUE PAVING PLAN AND PROFILE
 SCALE: H:1"=20', V:1"=2'
 SHEET NO. OF SHEETS STA. 100+00 TO STA. 105+00

F.A.U. RTE.	SECTION	COUNTY	TOTAL SHEETS	SHEET NO.
2714	19-00082-00-BT	COOK	102	18
FED. ROAD DIST. NO. 1		ILLINOIS		FED. AID PROJECT
		CONTRACT NO. 61K72		

E.I.R. PROJECT NO. 120-23-26801



- NOTE:
- 1) ROADWAY WIDENING & RESURFACING FROM STA. 96+40 TO STA. 100+90, AND FROM STA. 103+00 TO STA. 106+50
 - 2) ANY TREES WITHIN THE CLEAR ZONE WIDTH SHALL BE REMOVED
 - 3) YELLOW CENTER PAVEMENT MARKINGS WILL BE PROVIDED ON SHARED USE PATH
 - 4) SEE PAVEMENT MARKING AND SIGNING PLAN FOR DETAILED DESCRIPTION OF STRIPING



Drawing file: W:\Projects_by_Village\Wroonview\12022208 - 25th Avenue Shared-Use Path Phase II\SITE\25th Bike Path Updated.dwg Aug 28, 2024 - 8:58am

HANCOCK ENGINEERING
 50th Years of Excellence
 ♦ Civil Engineers
 ♦ Municipal Consultants
 ♦ Established 1911

9913 Roosevelt Road
 Waukegan, IL 60154-2780
 Phone: 708-848-0500
 www.hancock.com

DESIGNED -	MWW, AA	REVISED -	
DRAWN -	DMM, SFB, GD	REVISED -	8-19-24
CHECKED -	JGG	REVISED -	8-5-24
DATE -	6-17-24	REVISED -	7-17-24

**STATE OF ILLINOIS
 DEPARTMENT OF TRANSPORTATION**

**25th AVENUE
 PAVING PLAN AND PROFILE**

SCALE: H:1"=20' V:1"=2' SHEET NO. OF SHEETS STA. 105+00 TO STA. 110+00

F.A.U. RTE.	SECTION	COUNTY	TOTAL SHEETS	SHEET NO.
2714	19-00082-00-BT	COOK	102	19
FED. ROAD DIST. NO. 1 ILLINOIS FED. AID PROJECT			CONTRACT NO. 61K72	

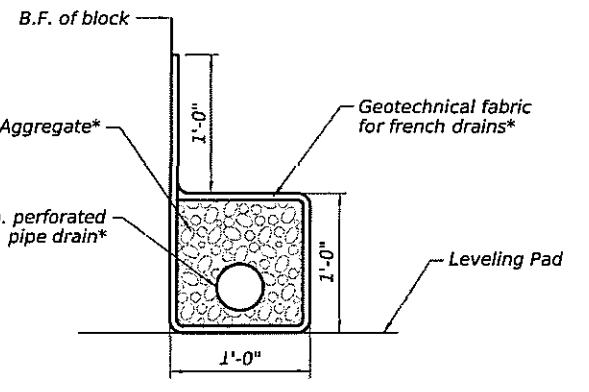
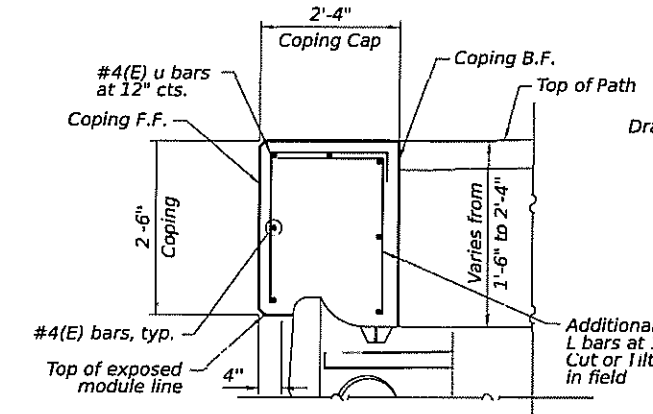
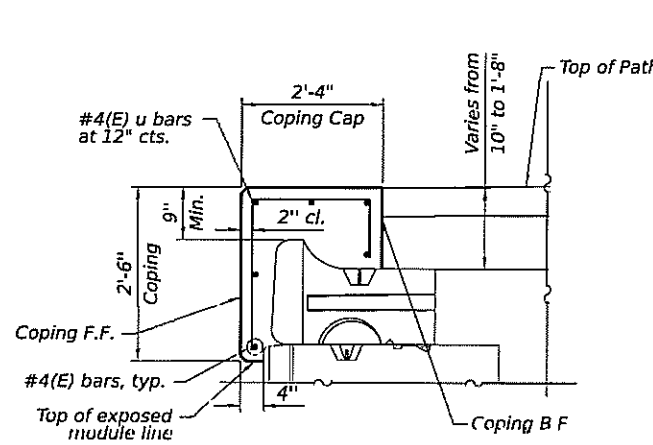
E.H.E. PROJECT NO. 120-23-2681

NOTES:

1. Design and installation of Precast Modular Retaining Wall using big block (without the need for soil reinforcement) to be in accordance with Section 522.10 of the IDOT Standard Specifications for Road and Bridge Construction.
2. Leveling Pad, Granular Backfill for Structures, Soil Reinforcement, and Design are included in the cost of the Precast Modular Retaining Wall.
3. Minimum required net allowable bearing pressure = 1,000 PSF.
4. Maximum length of #4(E) horizontal bars to be used is not to exceed 30'-0". A minimum of 2'-5" lap is required for the horizontal #4(E) bars.
5. See Sheet S-03 for Bicycle Railing Details.

TOTAL BILL OF MATERIAL

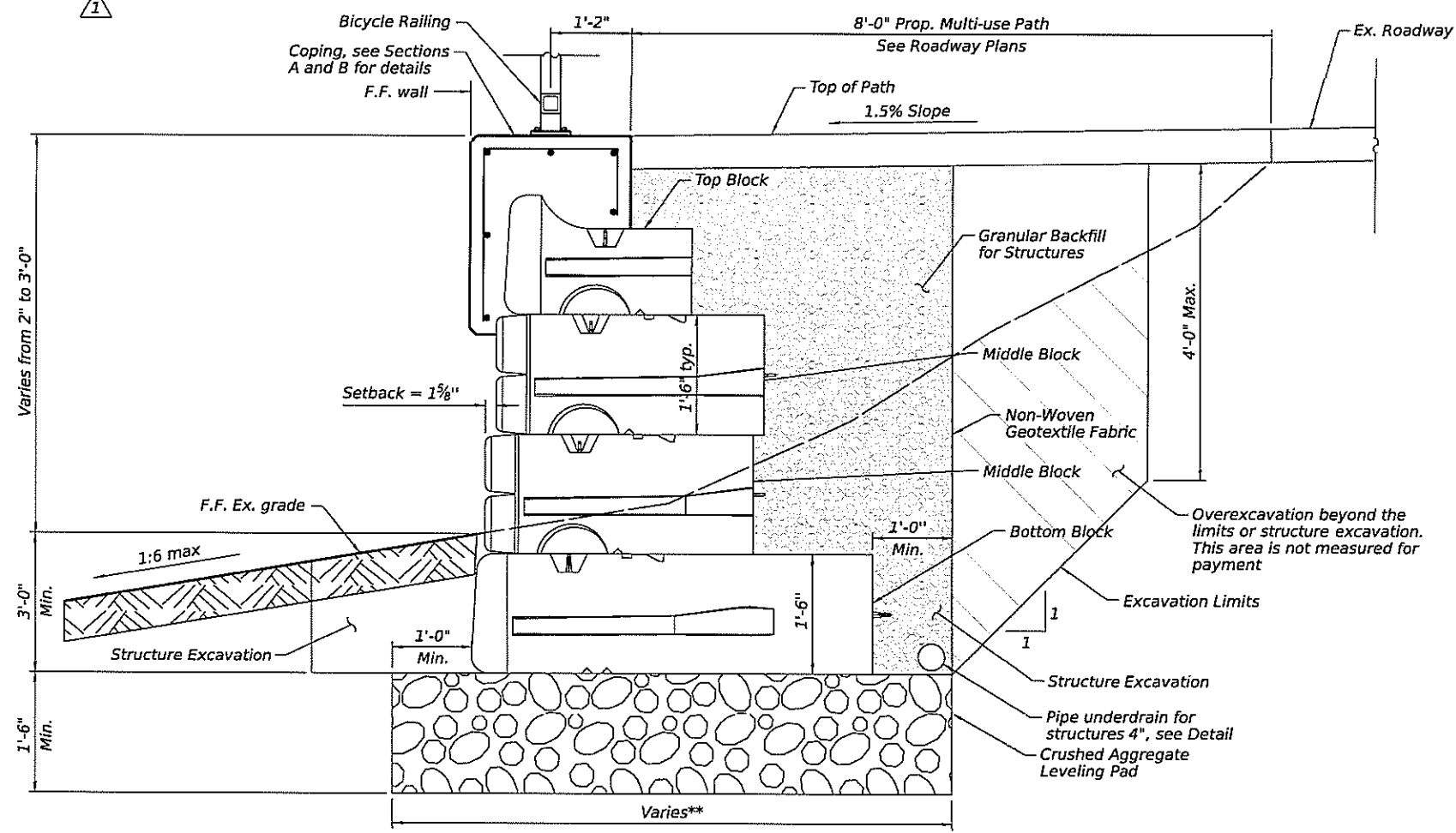
DESCRIPTION	UNIT	SP	SUB	SUPER	TOTAL
Structure Excavation	Cu Yd		570		570
Concrete Structures	Cu Yd			69.4	69.4
Reinforcement Bars, Epoxy Coated	Pound			4,230	4,230
Bicycle Railing	Foot			431	431
Precast Modular Retaining Wall	Sq Ft			1,327	1,327
Pipe Underdrains For Structures 4"	Foot			431	431



PIPE UNDERDRAIN DETAIL

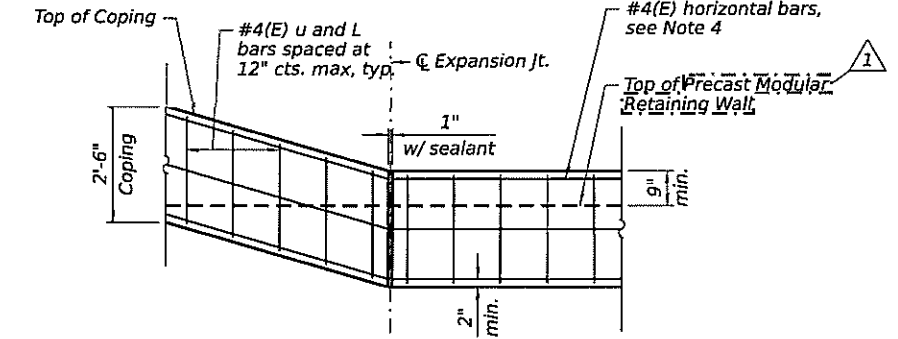
*Included in the cost of Pipe Underdrains for Structures, 4"

COPING DETAILS



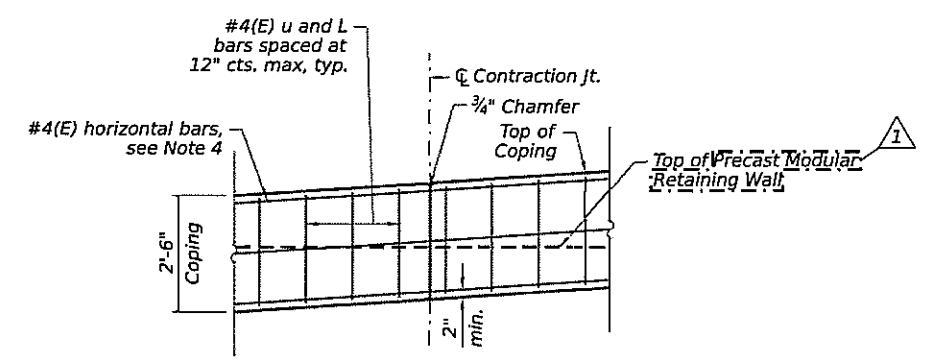
TYPICAL WALL CROSS SECTION

**Leveling pad width shall be a minimum of twice the depth of the Precast Modular Retaining Wall blocks.



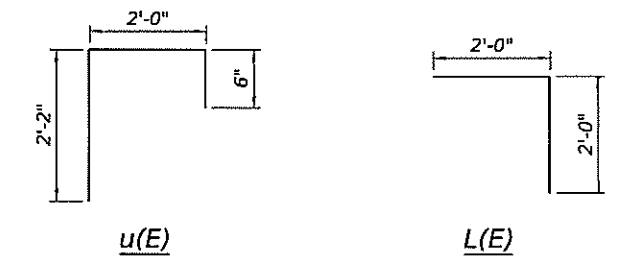
CIP COPING EXPANSION JOINT - FRONT FACE ELEVATION

(Provide Exp. Joints at corners and max. spacing of 90'-0")



CIP COPING CONTRACTION JOINT - ELEVATION

(Provide Contraction Joints at max. spacing of 30'-0")



BAR BEND DIAGRAM

DATE PLOTTED = 8/28/2024 1:15:21 PM
 PLOT SCALE = 1/8" = 1'-0"
 MODEL: DEFULT
 FILE NAME: A:\PROJECTS\2024\82824\82824.dwg

CiorbaGroup
 8725 W. Higgins Rd, Ste 600, Chicago, IL 60631
 P 773.775.4009 | www.ciorba.com

USER NAME = skent	DESIGNED - SAK	REVISED - 08/28/2024 SAK
PLOT SCALE = 1/8" = 1'-0"	DRAWN - SAK	REVISED -
PLOT DATE = 8/28/2024	CHECKED -	REVISED -
	DATE - 8/28/2024	REVISED -

**STATE OF ILLINOIS
 DEPARTMENT OF TRANSPORTATION**

GENERAL DETAILS

SHEET S-02 OF S0-7 SHEETS

FAI RTE.	SECTION	COUNTY	TOTAL SHEETS	SHEET NO.
2714	19-00082-00-BT	COOK	102	74
CONTRACT NO. 61K72			ILLINOIS FED. AID PROJECT	