

INDEX OF SHEETS

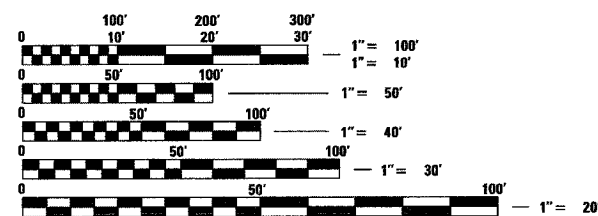
FOR INDEX OF SHEETS, SEE SHEET NO. 2

PROJECT LOCATED IN THE CITY OF CHICAGO

DAN RYAN EXPRESSWAY:	ADT (2010)	DESIGN SPEED	POSTED SPEED
NB I-94 (DAN RYAN)	151,800	60 MPH	55 MPH
NB I-94 (BISHOP FORD)	94,200	60 MPH	55 MPH
NB I-57	58,000	60 MPH	55 MPH
NB MICHIGAN AVENUE ENTRANCE RAMP	9,000	45 MPH	40 MPH
NB 95TH STREET ENTRANCE RAMP	10,600	45 MPH	40 MPH
EB I-57 TO I-94 CROSS-CONNECTOR	22,800	50 MPH	50 MPH
WB I-94 TO I-57 CROSS-CONNECTOR	24,900	50 MPH	50 MPH
SB I-94 (DAN RYAN)	140,500	60 MPH	55 MPH
SB I-94 (BISHOP FORD)	87,570	60 MPH	55 MPH
SB I-57	69,390	60 MPH	55 MPH
SB 87TH STREET EXIT RAMP	12,590	45 MPH	40 MPH
SB 87TH STREET ENTRANCE RAMP	13,350	45 MPH	40 MPH
SB 95TH STREET EXIT RAMP	11,900	45 MPH	40 MPH
SB WENTWORTH AVE. EXIT RAMP	4,770	45 MPH	40 MPH

PROJECT DESCRIPTION

PROJECT INCLUDES THE CONSTRUCTION OF CONCRETE SERVICE PADS AROUND 31 HIGH MAST LIGHT TOWERS LOCATIONS.



FULL SIZE PLANS HAVE BEEN PREPARED USING STANDARD ENGINEERING SCALES; REDUCED SIZED PLANS WILL NOT CONFORM TO STANDARD SCALES. IN MAKING MEASUREMENTS ON REDUCED PLANS, THE ABOVE SCALES MAY BE USED

DIGGER:
CHICAGO UTILITY ALERT NETWORK
(312) 744-7000

CTA CONTACT:
MARVIN A. WATSON,
GENERAL MANAGER, CONSTRUCTION
(312) 681-3860

CONTRACT NO. 60A23

STATE OF ILLINOIS
DEPARTMENT OF TRANSPORTATION
DIVISION OF HIGHWAYS

PROPOSED HIGHWAY PLANS

F.A.I. ROUTE 94 (DAN RYAN EXPRESSWAY)
SECTION 2005-048 L
I-57 INTERCHANGE TO 83RD STREET
HIGH MAST LIGHT TOWER SERVICE PADS

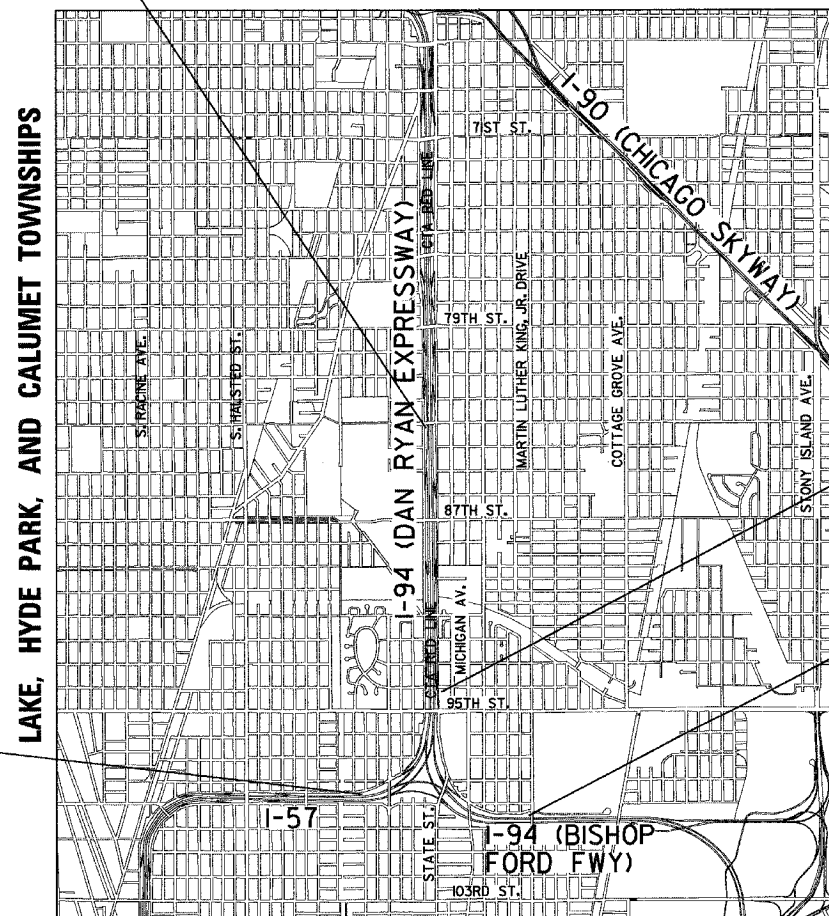
COOK COUNTY
C-91-290-05
R. 14 E.

F.A.I. 94 (RYAN) PROJECT LIMIT
STA. 1284+04 (SB I-94)

F.A.I. 94 (RYAN) PROJECT LIMIT
STA. 2211+12 (NB I-94)

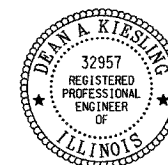
F.A.I. 94 (FORD) PROJECT LIMIT
STA. 2002+83 (NB I-94)

F.A.I. 57 PROJECT LIMIT
STA. 121+76 (SB I-57)



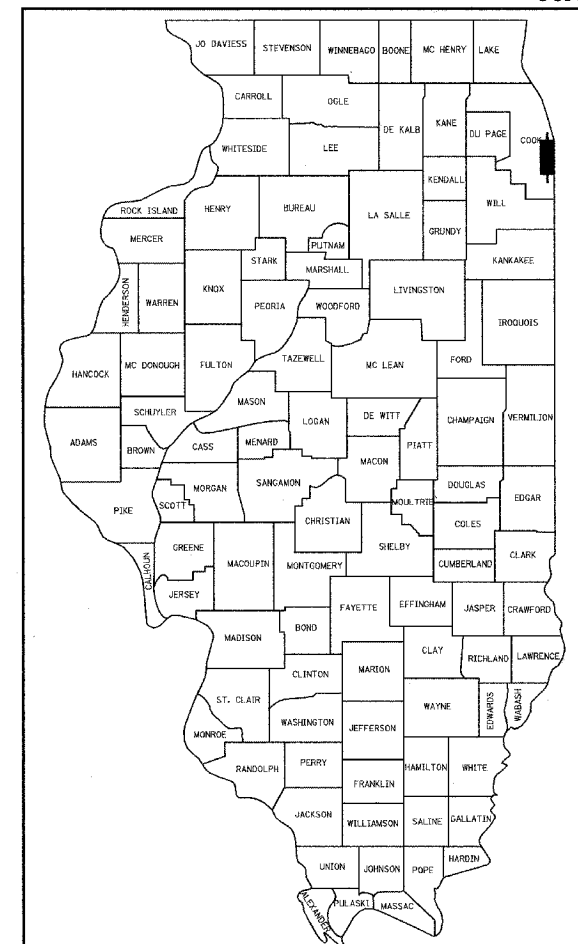
LOCATION MAP

GROSS LENGTH OF PROJECT = 11804.64 FT. = 2.236 MI.
NET LENGTH OF PROJECT = 11804.64 FT. = 2.236 MI.



Signed Dean A. Kieseling
Dean A. Kieseling, P.E., Ill. Lic. No. 32957
Expires 11-30-2009
Date 01-08-07

F.A.I. RTE.	SECTION	COUNTY	TOTAL SHEETS	SHEET NO.
94	2005-048 L	COOK	85	1
FED. ROAD DIST. NO. ILLINOIS FED. AID PROJECT			D-91-290-05 60A23	



LOCATION OF SECTION INDICATED THUS: -

STATE OF ILLINOIS
DEPARTMENT OF TRANSPORTATION
DIVISION OF HIGHWAYS

SUBMITTED Jan 8 2007
Diane O'Keefe DISTRICT ENGINEER
February 2, 2007
Eric F. Horn ENGINEER OF DESIGN AND ENVIRONMENT
February 2, 2007
Milton R. Sues, P.E. DIRECTOR, DIVISION OF HIGHWAYS

CONTRACT 40B

TYLIN INTERNATIONAL
PRINTED BY THE AUTHORITY OF THE STATE OF ILLINOIS