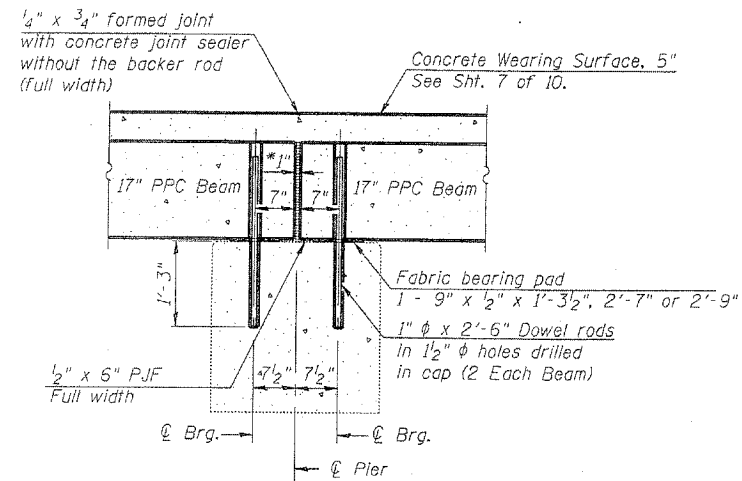
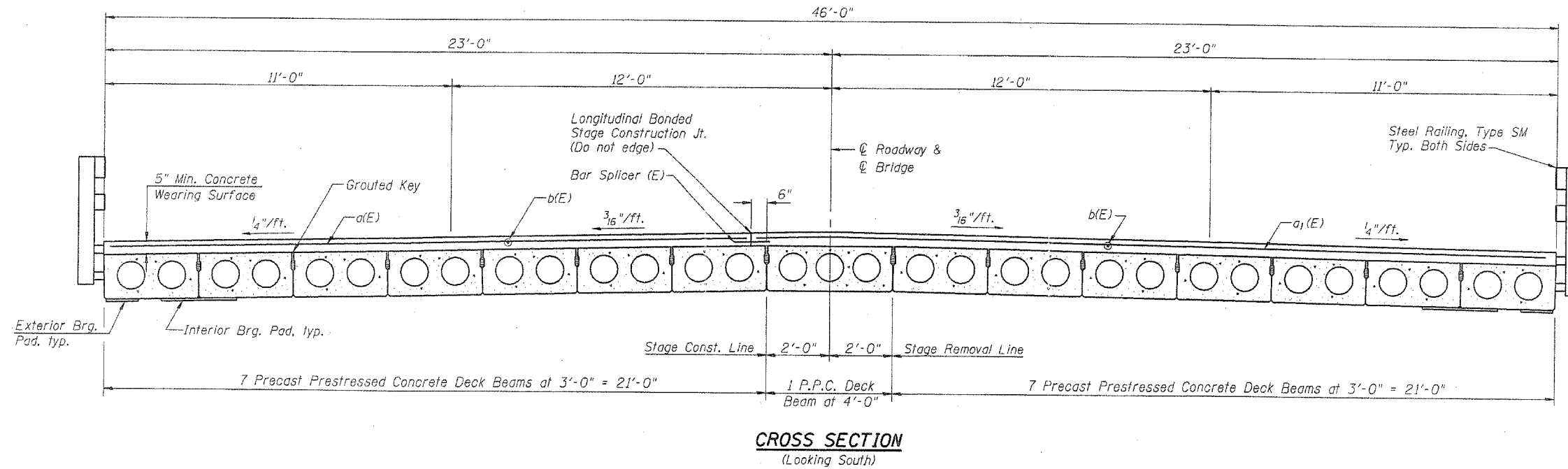


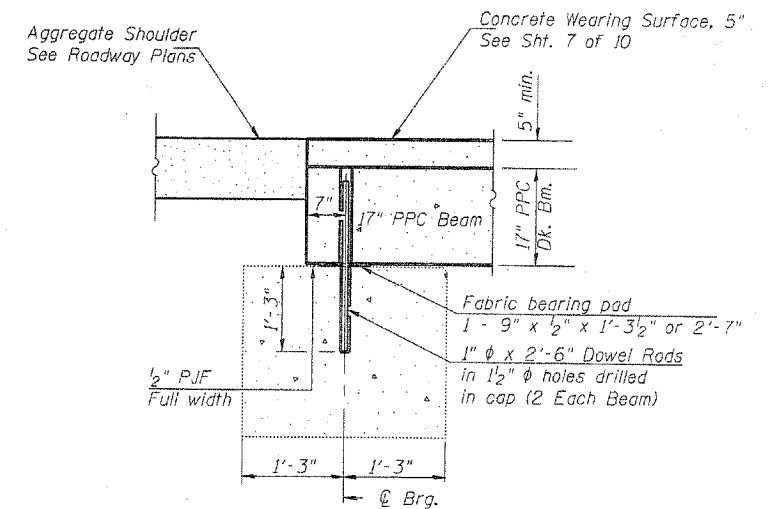
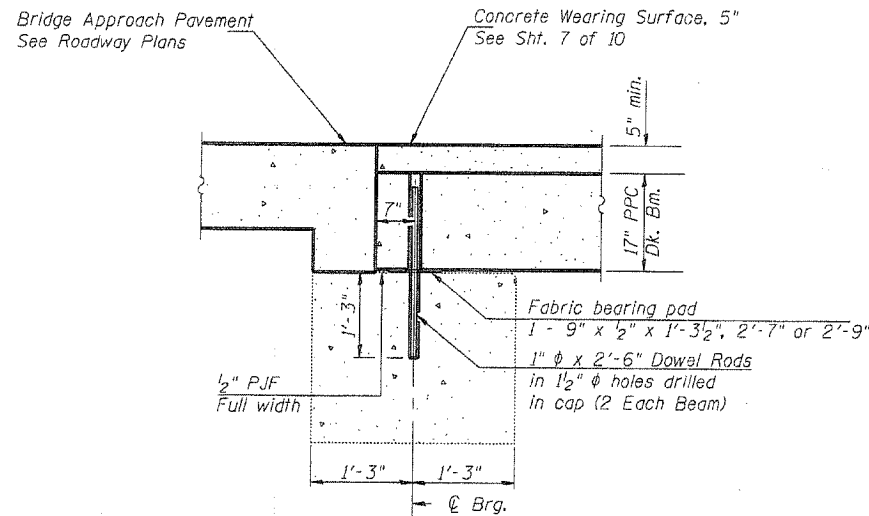
STATE OF ILLINOIS  
DEPARTMENT OF TRANSPORTATION

ROUTE NO.	SECTION	COUNTY	SHEET NO.	SHEET	SHEET NO.
SA 13	4	Kane	27	12	10 SHEETS
FED. ROAD DIST. NO. 7		ILLINOIS		FED. AID PROJECT	

Contract # 60BB1 ~~49~~ 49B2-1



\* 1" Jt. shall be filled with non-shrink grout. 1" dimension may vary to accommodate tolerance in beam lengths.



Notes:

1. After beams have been erected, holes shall be drilled into substructure and anchor dowels placed. Dowel holes shall be filled with non-shrink grout to top of beam and allowed to cure min. 24 hrs. prior to grouting the shear keys.
2. All horizontal dimensions are at right angles to beam ends.
3. See Sht. 5 of 10 for bearing pad details.
4. Existing dowel rods shall be burned off flush with the top of the abutment or pier.

DESIGNED DDB	200
CHECKED LLV	EXAMINED
DRAWN MGM	PASSED
CHECKED DDB	ENGINEER OF BRIDGE DESIGN
	ENGINEER OF BRIDGES AND STRUCTURES

**SUPERSTRUCTURE DETAILS  
SECTIONS AND JOINT DETAILS**  
S.A. 13 (IL RTE. 25)  
OVER NORTON CREEK  
S.A. RTE. 13 (F.A.S. 106)  
KANE COUNTY, STA. 61+92.50  
STRUCTURE NO. 045-0045

**STS Consultants**  
111 NE Jefferson Ave.  
Peoria, Illinois 61602  
Ph (309) 676-8464  
FAX (309) 676-5445  
IL Design Firm Reg. No. 184-001518