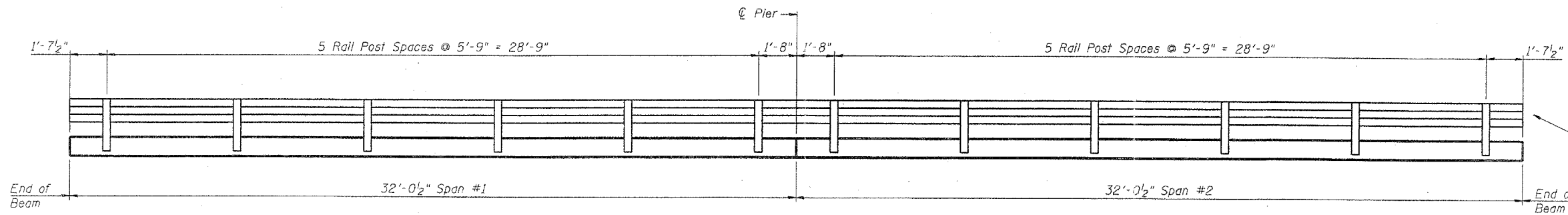


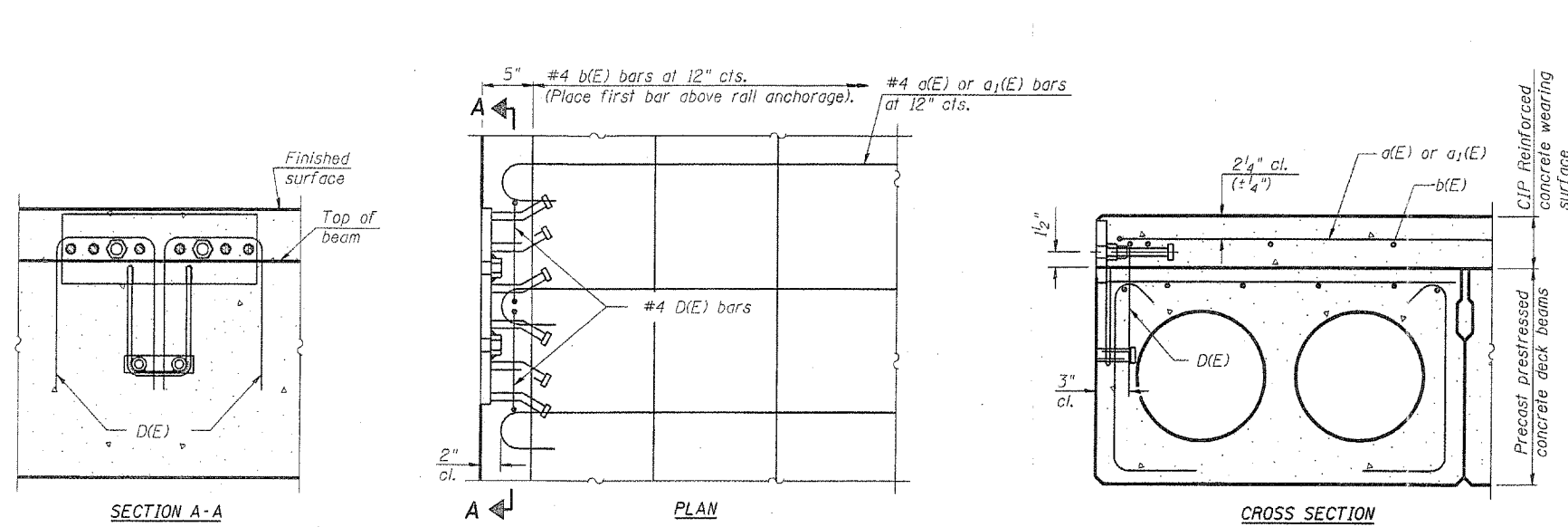
STATE OF ILLINOIS
DEPARTMENT OF TRANSPORTATION

ROUTE NO.	SECTION	COUNTY	SHEETS	SHEET	SHEET NO.
SA 13	X	Kane	27	13	10 SHEETS
FED. ROAD DIST. NO. 7	ILLINOIS	FED. AID PROJECT			

Contract # 60B81 X 49 BE-1

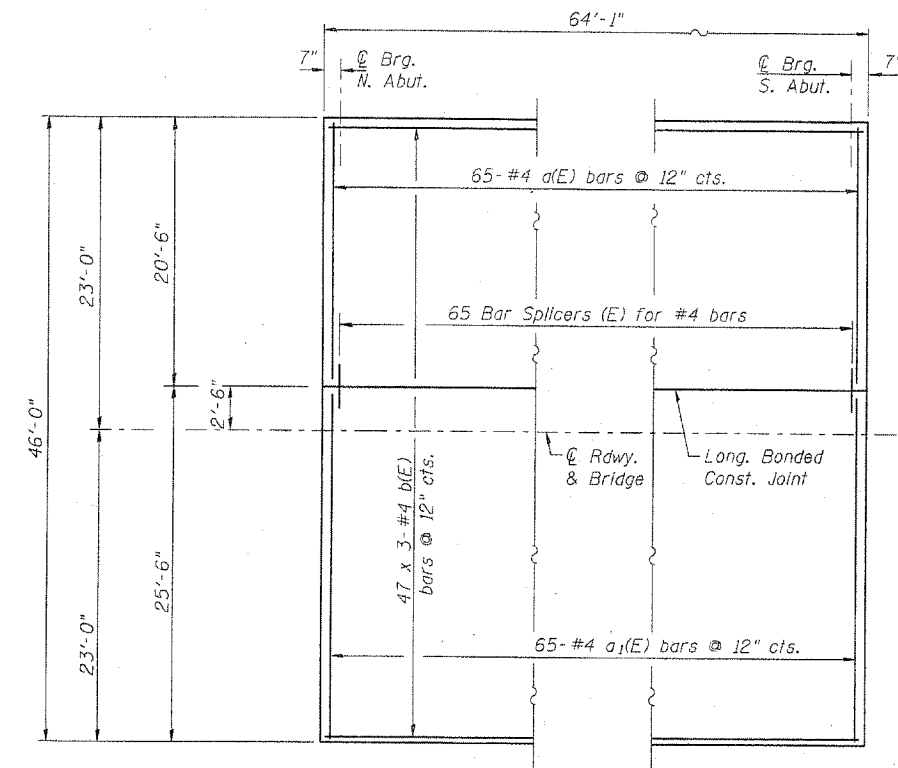


RAIL POST SPACING DETAIL

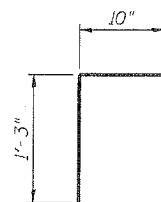


REINFORCED CONCRETE WEARING SURFACE AND RAILING CONNECTION DETAILS

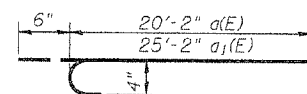
The rail anchorage shall be cast with the beam and the wearing surface shall be cast in the field. Formwork necessary for the wearing surface may be secured utilizing the bottom rail anchorage inserts and/or additional inserts cast into the beam. Drilling into the beam will not be permitted.



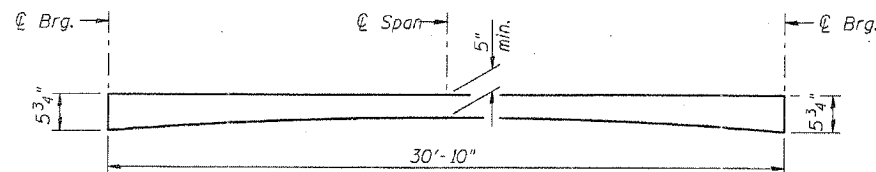
CONCRETE WEARING SURFACE PARTIAL PLAN



D(E) BAR



a(E) & a1(E) BAR



REINFORCED CONCRETE WEARING SURFACE PROFILE

Thickness on center beam will vary from those shown above at edges to an additional 3/8" at ϕ of roadway.

Laps: #4 bars - 1'-4"

BILL OF MATERIAL

Bar	No.	Size	Length	Shape
a(E)	65	#4	20'-8"	U
a1(E)	65	#4	25'-8"	U
b(E)	141	#4	22'-2"	U

RAIL POST SPACING AND
CONCRETE WEARING SURFACE
S.A. 13 (IL RTE. 25)
OVER NORTON CREEK
S.A. RTE. 13 (F.A.S. 106)
KANE COUNTY, STA. 61+92.50
STRUCTURE NO. 045-0045



DESIGNED	DDB
CHECKED	LLV
DRAWN	MGM
CHECKED	DDB

EXAMINED	200
PASSED	ENGINEER OF BRIDGE DESIGN
	ENGINEER OF BRIDGES AND STRUCTURES