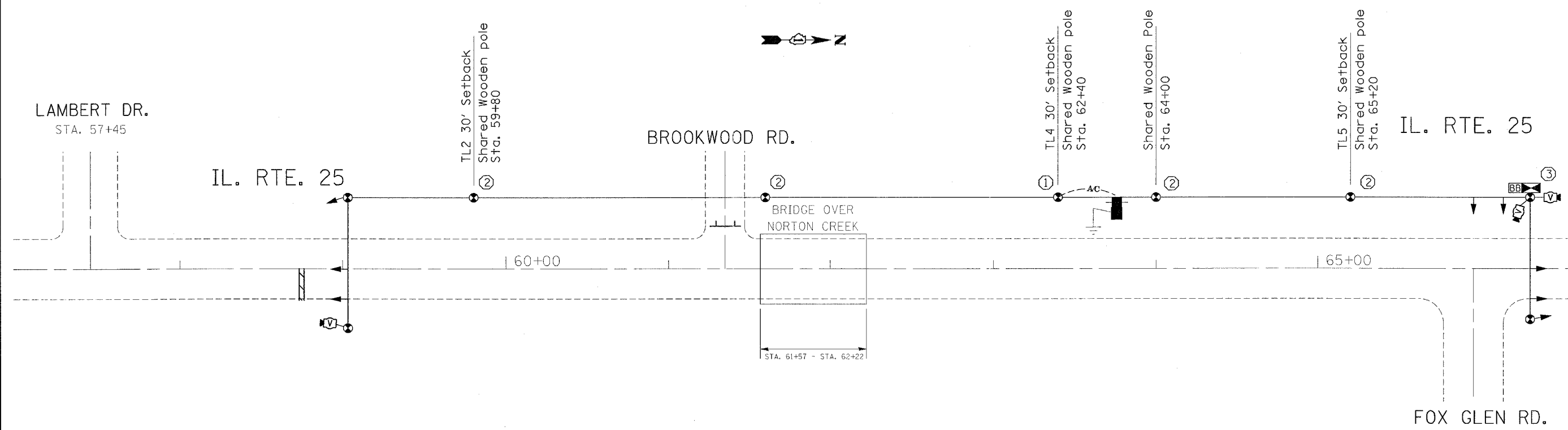


F.A. RTE.	SECTION	COUNTY	TOTAL SHEETS	SHEET NO.
			27	18
STA.		TO STA.		
FED. ROAD DIST. NO.	ILLINOIS	FED. AID PROJECT		
CONTRACT NO. 60B81				



TEMPORARY TRAFFIC SIGNAL AND REMOVAL LEGEND

	PROPOSED	EXISTING
TEMPORARY CONTROLLER CABINET		
TEMPORARY SERVICE INSTALLATION, (P) POLE OR (G) GROUND MOUNT		
TEMPORARY TRAFFIC SIGNAL HEAD SPAN WIRE MOUNTED ORIGINAL LOCATION		
TEMPORARY TRAFFIC SIGNAL HEAD SPAN WIRE MOUNTED SECONDARY LOCATION		
TEMPORARY PEDESTRIAN SIGNAL HEAD, BRACKET MOUNTED		
TEMPORARY WOOD POLE (CLASS 5 OR BETTER) 45 FOOT (13.7m) MINIMUM		
EXISTING SIGNAL POST AND FOUNDATION TO BE REMOVED		
VIDEO DETECTOR		
BATTERY BACK-UP		

CONSTRUCTION NOTES:

- ① SHARED TRAFFIC SIGNAL AND ROADWAY LIGHTING ELECTRICAL SERVICE ENCLOSURE. SEE ROADWAY LIGHTING DETAIL.
- ② SHARED TRAFFIC SIGNAL AND ROADWAY LIGHTING WOOD POLE WITH LUMINAIRE MOUNTING LIGHT.
- ③ CONTROLLER WITH STEEL BASE CABINET AND BATTERY BACK-UP CABINET SHALL BE MOUNTED ON A WOOD STAND

REVISIONS	
NAME	DATE

ILLINOIS DEPARTMENT OF TRANSPORTATION
TEMPORARY TRAFFIC SIGNAL PLAN
 IL. RTE. 25 @
 FOX GLEN RD./LAMBERT DR.

SCALE: VERT. 1"=20'
 HORIZ.
 DATE 5/16/2007

DRAWN BY BCK
 DESIGNED BY BCK
 CHECKED BY DAD

PLOT DATE = 5/16/2007
 FILE NAME = c:\proje\eta\eta\eff\io\1070008\1256efoxglen.dgn
 PLOT SCALE = 24.0000 / IN.
 USER NAME = kentphix@jbc