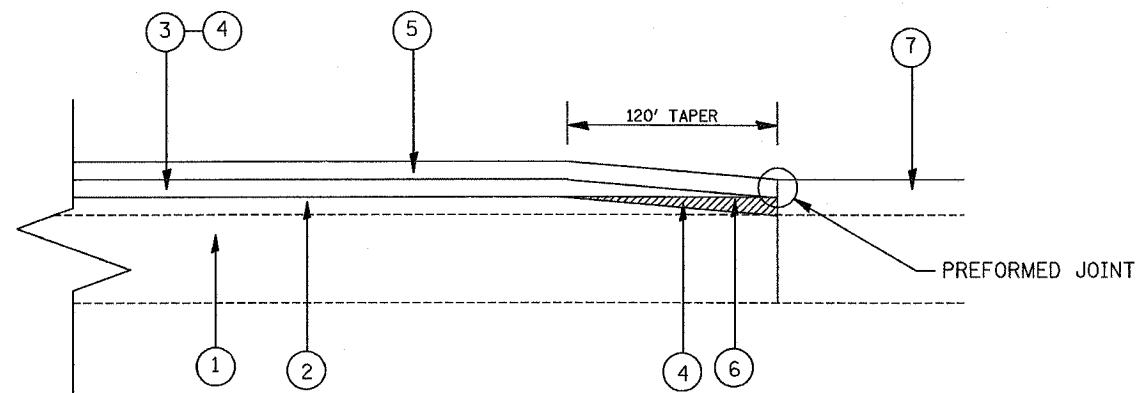
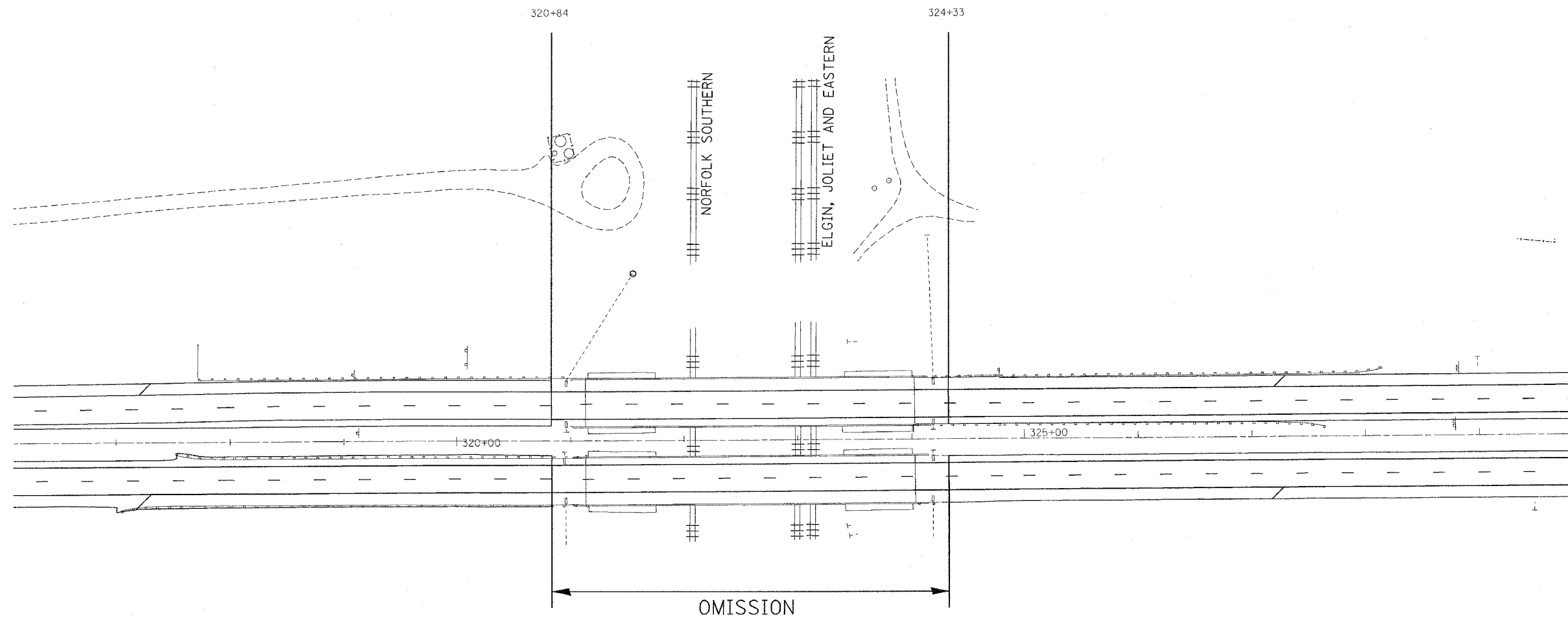


*REF-
*REF-
*REF-

F.A.P. NO.	SECTION	COUNTY	TOTAL SHEETS	SHEET NO.
332		COOK	54	33
STA. 275+00		TO STA. 285+00		
FED. ROAD DIST. NO. 1 ILLINOIS FED. AID PROJECT				
*(0101,0203B & 0303) RS-10				
D-91-205-02				



LEGEND

- 1 EXISTING PCC PAVEMENT, 10"
- 2 EXISTING HOT-MIX ASPHALT CONCRETE SURFACE (AFTER MILLING), 2"
- 3 PROPOSED HOT-MIX ASPHALT SURFACE REMOVAL, 2"
- 4 PROPOSED STONE MATRIX ASPHALT, BINDER COURSE- 2"
- 5 PROPOSED STONE MATRIX ASPHALT, SURFACE COURSE- 2"
- 6 120' BUTT JOINT MILLED BEFORE PLACEMENT OF SMA BINDER.
- 7 EXISTING PCC APPROACH SLAB

THIS WORK IS THE SAME ON BOTH ENDS OF THE PCC APPROACH SLABS.
THE DETAIL ONLY SHOWS THE NORTH SIDE OF THE BRIDGE.

THE CONTRACTOR SHALL BE REQUIRED TO PROTECT THE EXISTING PCC
PCC APPROACH SLABS. IF ANY DAMAGE OCCUR TO THEM, IT WILL BE THE
RESPONSABILITY OF THE CONTRACTOR TO FIX THE DAMAGE AND WILL NOT
BE PAID SEPARATELY.

REVISIONS	
NAME	DATE

ILLINOIS DEPARTMENT OF TRANSPORTATION
IL ROUTE 394
 RUSURFACING DETAILS AT THE
 PCC APPROACH SLABS
 (NOT TO SCALE)
 SCALE: VERT. _____
 HORIZ. _____
 DATE 7/14/2007
 DRAWN BY _____
 CHECKED BY _____