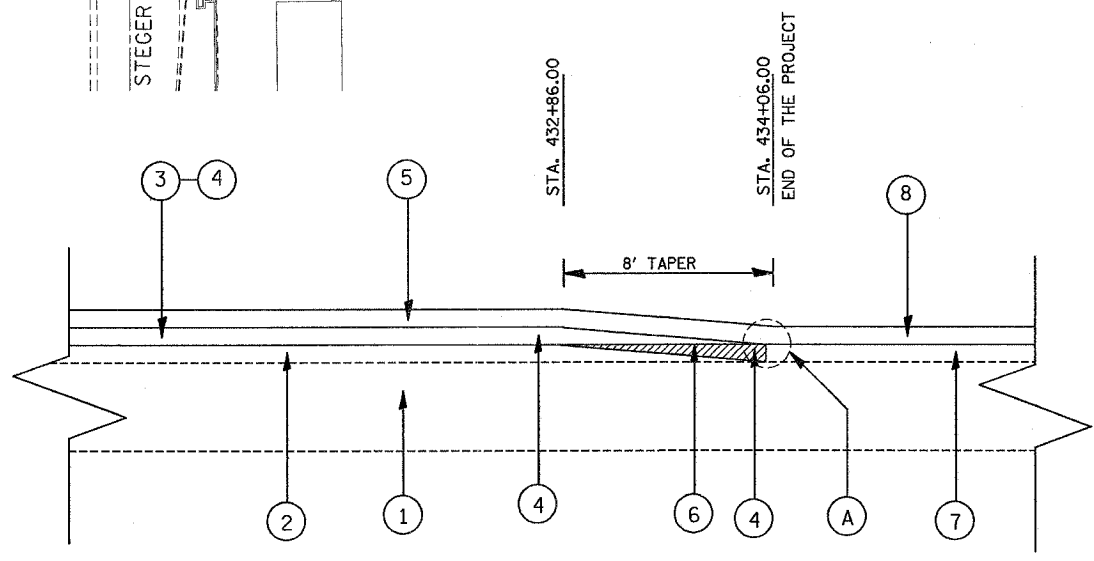
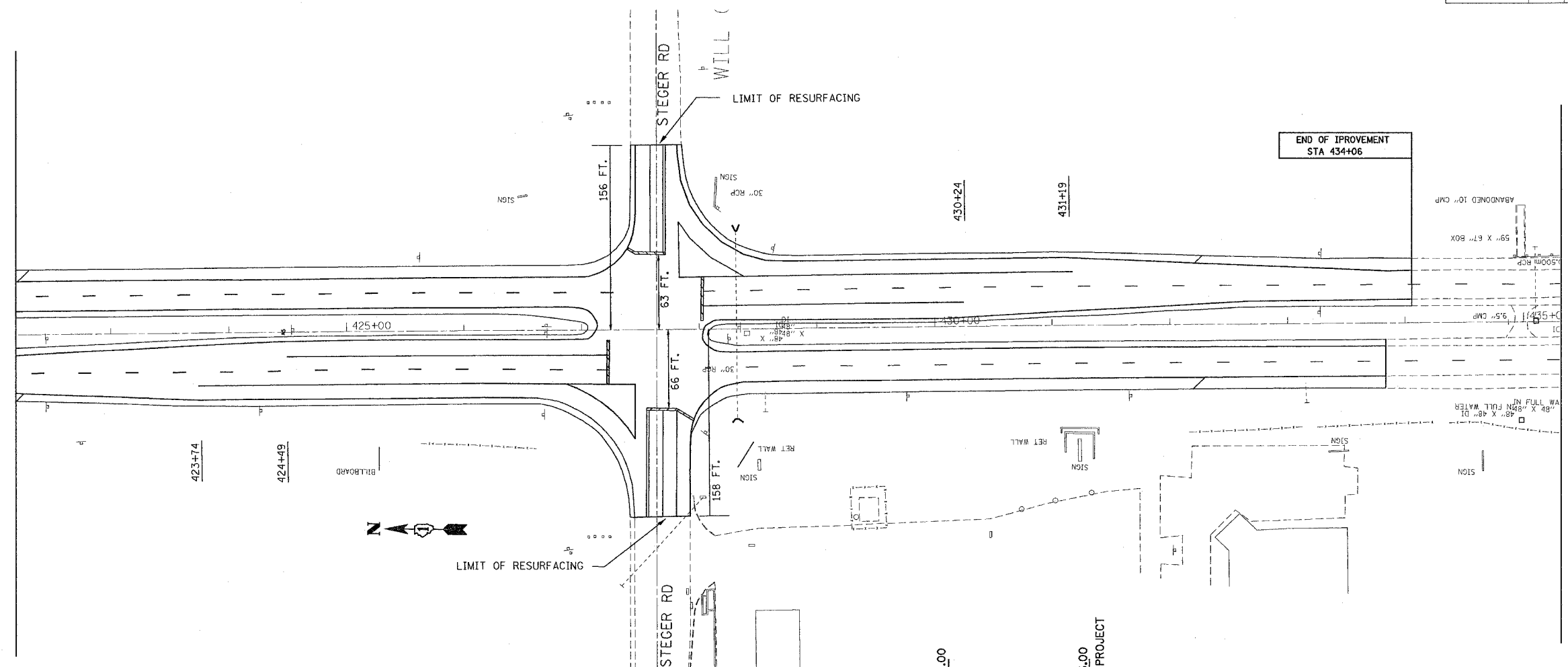


REF-
REF-
REF-

F.A.P. RTE.	SECTION	COUNTY	TOTAL SHEETS	SHEET NO.
332		COOK	54	35
STA. 275+00		TO STA. 285+00		
FED. ROAD DIST. NO. 1 ILLINOIS FED. AID PROJECT				



LEGEND

- 1 EXISTING PCC PAVEMENT, 10"
- 2 EXISTING HOT-MIX ASPHALT SURFACE (AFTER MILLING), 2"
- 3 PROPOSED HOT-MIX ASPHALT SURFACE REMOVAL, 2"
- 4 PROPOSED STONE MATRIX ASPHALT, BINDER COURSE- 2"
- 5 PROPOSED STONE MATRIX ASPHALT, SURFACE COURSE- 2"
- 6 8' BUTT JOINT MILLED AT THE TIME THE SMA BINDER IS PLACED.
- 7 EXISTING HOT-MIX ASPHALT BINDER.
- 8 EXISTING HOT-MIX ASPHALT SURFACE.

(A) MATCH THE EXISTING ELEVATION AT THE END OF THE BUTT JOINT

REVISIONS	
NAME	DATE

ILLINOIS DEPARTMENT OF TRANSPORTATION
 IL ROUTE 394
 DETAILS FOR BUTT JOINT
 AT THE END OF
 PROJECT - STA. 434+06
 SCALE: VERT. _____
 HORIZ. _____
 DATE 7/14/2007
 DRAWN BY _____
 CHECKED BY _____