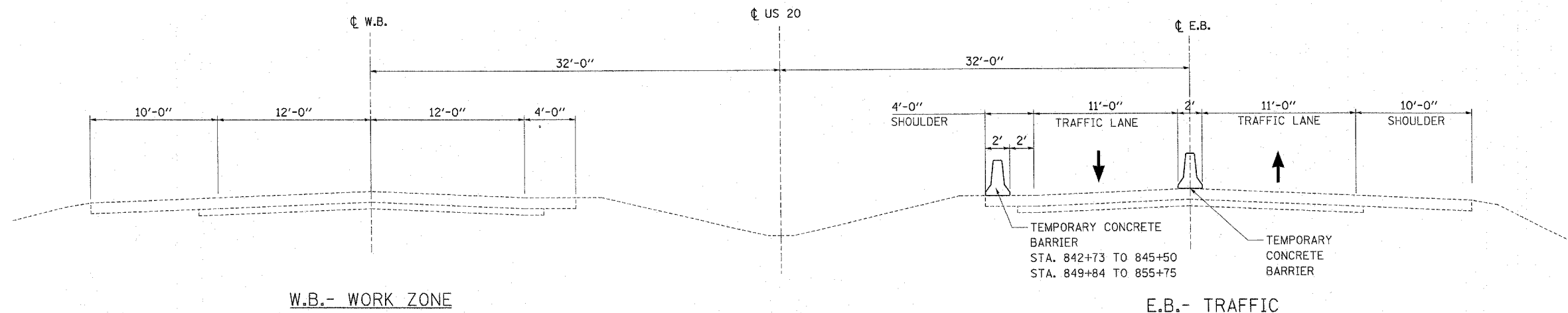


F.A.P. RTE.	SECTION	COUNTY	TOTAL SHEETS	SHEET NO.
301	(2HB-2, 2HB-1D)	WINNEBAGO	107	16
STA.		TO STA.		
FED. ROAD DIST. NO.		ILLINOIS FED. AID PROJECT		

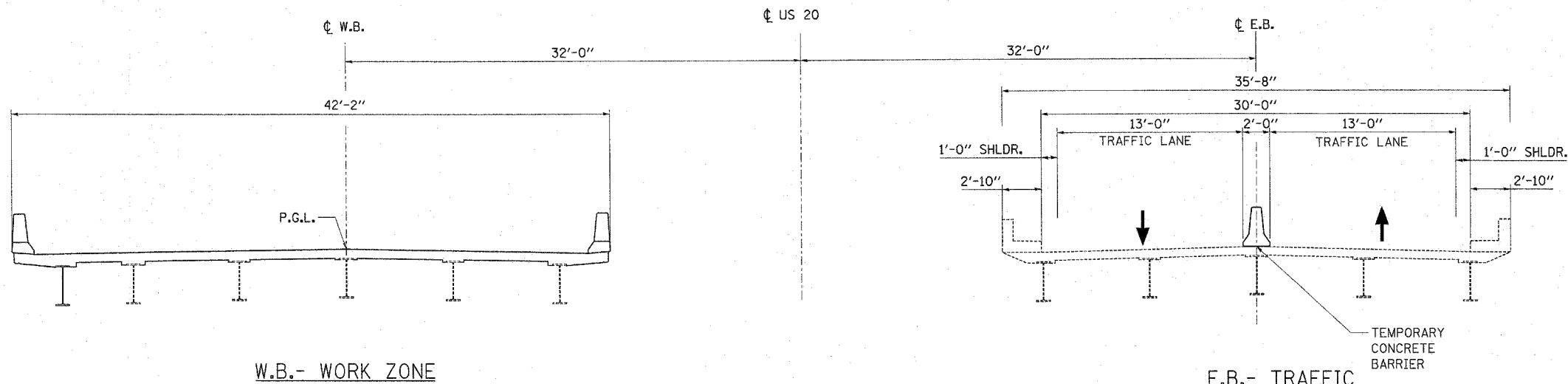
NOTES

1. TRAFFIC CONTROL STANDARDS SHOWN ON THE WORK ZONE MAP ON THIS SHEET AND AS MODIFIED BY THESE NOTES INDICATE THE MINIMUM ACCEPTABLE PLACEMENT OF TRAFFIC CONTROL DEVICES. THE CONTRACTOR'S ATTENTION IS CALLED TO THE FACT THAT THIS INFORMATION IS PROVIDED FOR BIDDING PURPOSES AND THAT CHANGES TO THESE STANDARDS MAY BE MADE BY THE ENGINEER TO SUIT FIELD CONDITIONS. IT SHOULD BE NOTED THAT LOCATION AND DURATION OF BARRICADE PLACEMENT WILL BE CONTINGENT UPON THE ANTICIPATED PROGRESS SCHEDULE OF THE CONTRACTOR. ACCESS TO COMMERCIAL, INDUSTRIAL, RESIDENTIAL, OR OTHER LAND USES ADJACENT TO THE WORK ZONE WILL BE MAINTAINED WHEN TRENCHING, TUNNELING, EXCAVATION, OR ROADWAY CONSTRUCTION ACTIVITIES DO NOT CONFLICT WITH THE SAFE MOVEMENT OF VEHICULAR OR PEDESTRIAN TRAFFIC IN THE WORK ZONE.
2. TYPE I, II AND/OR III BARRICADES WITH TWO WAY FLASHING LIGHTS WILL BE REQUIRED TO GUIDE TRAFFIC AWAY FROM PAVEMENT AREAS CLOSED FOR CONSTRUCTION.
3. ARROW BOARDS WILL BE REQUIRED WHEN IMPLEMENTING ALL LANE CLOSURES.
4. ALL SIGNS ARE REFERENCED TO THE ILLINOIS MANUAL ON UNIFORM TRAFFIC CONTROL DEVICES.
5. ONE BARRIER WALL MARKER SHALL BE ADDED TO THE CENTER OF EACH TEMPORARY CONCRETE BARRIER WALL SECTION.
6. EXISTING PAVEMENT MARKINGS THAT CONFLICT WITH THE TEMPORARY PAVEMENT MARKINGS SHALL BE REMOVED. THIS WORK SHALL BE PAID FOR AS PAVEMENT MARKING REMOVAL.
7. TEMPORARY IMPACT ATTENUATORS SHALL MEET NCNRP 350 STANDARDS AND BE PLACED AT THE END OF TEMPORARY CONCRETE BARRIERS.
8. PRAIRIE AND SIMPSON ROAD SHALL NEVER BE CLOSED SIMULTANEOUSLY DURING CONSTRUCTION. EACH ROAD SHALL HAVE A MAXIMUM OF 30 CALENDAR DAY'S CLOSURE. ANY EXTRA CLOSURE DAYS WILL BE LIQUIDATED DAMAGES.



STAGE I TRAFFIC CONTROL

- STA. 839+00 TO STA. 841+05.08 (W.B.)
- STA. 842+59.18 TO STA. 848+68.45 (W.B.)
- STA. 850+42.11 TO STA. 852+50 (W.B.)
- STA. 839+00 TO STA. 841+19.74 (E.B.)
- STA. 842+73.85 TO STA. 848+10.96 (E.B.)
- STA. 849+84.62 TO STA. 852+50 (E.B.)



STAGE I TRAFFIC CONTROL

- STA. 841+05.08 TO STA. 842+59.18 (W.B.)
- STA. 848+68.45 TO STA. 850+42.11 (W.B.)
- STA. 841+19.74 TO STA. 842+73.85 (E.B.)
- STA. 848+10.96 TO STA. 849+84.62 (E.B.)

SUGGESTED CONSTRUCTION STAGING:

THE FOLLOWING IS THE PREFERRED CONSTRUCTION STAGING FOR THIS PROJECT. THE PURPOSE OF THIS STAGING IS TO MINIMIZE DELAYS TO THE MOTORIST. THE CONTRACTOR MAY ALTER THE SEQUENCE OF OF CONSTRUCTION WITH THE PRIOR APPROVAL OF THE ENGINEER. PRIOR TO THE START OF CONSTRUCTION, REQUIRED TRAFFIC CONTROL DEVICES SHALL BE IN PLACE.

STAGE I

1. REDUCE E.B. TRAFFIC TO OUTSIDE LANE.
2. ERECT TEMPORARY LIGHTS, BARRICADES, SIGNS, AND TEMPORARY CONCRETE BARRIER AS SHOWN ON THE DRAWING, STATE STANDARDS, AND AS DIRECTED BY THE ENGINEER. PLACE TEMPORARY PAVEMENT MARKINGS.
3. REMOVE MEDIAN CROSSOVER CLOSURE.
4. REDUCE W.B. TRAFFIC TO INSIDE LANE AND REDIRECT OVER CROSSOVERS.
5. CONSTRUCT THE W.B. BRIDGES AT PRAIRIE ROAD AND SIMPSON ROAD.

STAGE II

1. REDUCE W.B. TRAFFIC TO OUTSIDE LANE. ENSURE GUARDRAIL IS ALONG LENGTH OF W.B. INSIDE LANE APPROACHING PRAIRIE ROAD AND SIMPSON ROAD BRIDGES.
2. ERECT BARRICADES, SIGNS, AND TEMPORARY CONCRETE BARRIER AND GUARDRAIL AS SHOWN ON THE DRAWING, STATE STANDARDS, AND AS DIRECTED BY THE ENGINEER. PLACE TEMPORARY PAVEMENT MARKINGS.
3. REDUCE E.B. TRAFFIC TO INSIDE LANE AND REDIRECT OVER CROSSOVERS.
4. CONSTRUCT THE E.B. BRIDGES AT PRAIRIE ROAD AND SIMPSON ROAD.

STAGE III

1. COMPLETE SITE RESTORATION AND INSTALLATION OF THE PERMANENT PAVEMENT MARKINGS.
2. REMOVE ALL TEMPORARY PAVEMENT MARKINGS.
3. REINSTALL MEDIAN CROSSOVER CLOSURE.
4. REMOVE TEMPORARY LIGHTS.

REVISIONS	
NAME	DATE

ILLINOIS DEPARTMENT OF TRANSPORTATION
US 20 OVER
PRAIRIE AND SIMPSON ROADS

TRAFFIC CONTROL NOTES
AND SECTIONS

SCALE: VERT.
 HORIZ.
DATE 06/22/07

DRAWN BY AJP
CHECKED BY SPF

FILE NAME = P:\2272-00 - IDOT US 20 Bridges\2286\905-Roadway\286\905\T.C.dwg
PLOT SCALE = \$SCALE\$
USER NAME = \$USER\$