

STATE OF ILLINOIS
DEPARTMENT OF TRANSPORTATION

ROUTE NO.	SECTION	COUNTY	TOTAL SHEETS	SHEET NO.	SHEET NO. 8 43 SHEETS
F.A.P. 301 (US 20)	(2HB-2D)	WINNEBAGO	107	30	
FED. ROAD DIST. NO. 7		ILLINOIS FED. AID PROJECT-			

Contract #64B07

NORTH CURB LINE

Location	Station	Offset	Theoretical Grade Elevations
Bk. E. Abut.	842+54.14	-22.00	763.59
A	842+64.14	-22.00	763.49
B	842+74.14	-22.00	763.39
End E. Appr. Pav't.	842+84.14	-22.00	763.29

NORTH EDGE OF PAVEMENT

Location	Station	Offset	Theoretical Grade Elevations
Bk. E. Abut.	842+56.43	-12.00	763.78
A	842+66.43	-12.00	763.68
B	842+76.43	-12.00	763.58
End E. Appr. Pav't.	842+86.43	-12.00	763.48

☉ WB ROADWAY & PGL

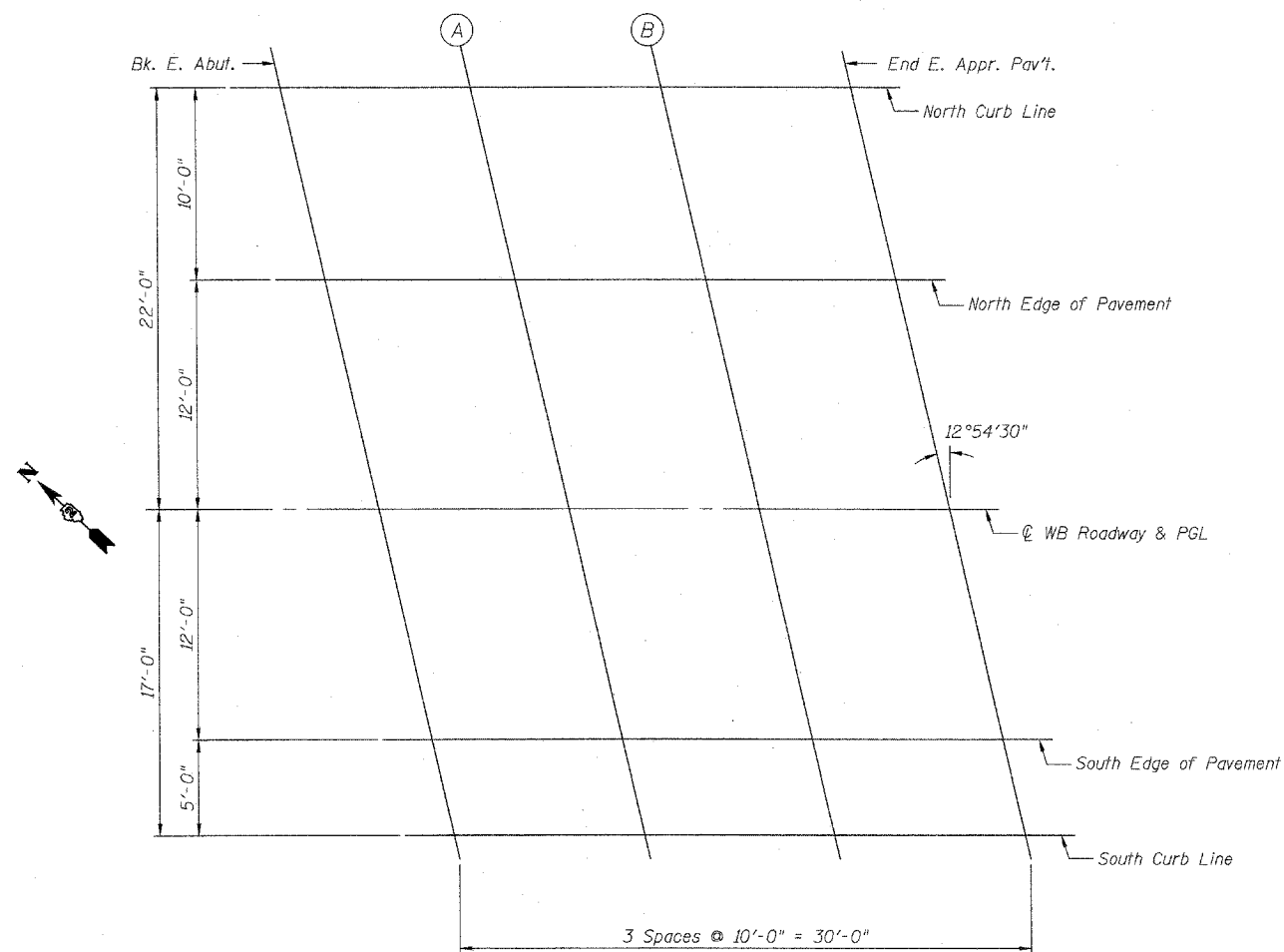
Location	Station	Offset	Theoretical Grade Elevations
Bk. E. Abut.	842+59.18	0.00	763.94
A	842+69.18	0.00	763.84
B	842+79.18	0.00	763.74
End E. Appr. Pav't.	842+89.18	0.00	763.64

SOUTH EDGE OF PAVEMENT

Location	Station	Offset	Theoretical Grade Elevations
Bk. E. Abut.	842+61.93	12.00	763.72
A	842+71.93	12.00	763.62
B	842+81.93	12.00	763.52
End E. Appr. Pav't.	842+91.93	12.00	763.42

SOUTH CURB LINE

Location	Station	Offset	Theoretical Grade Elevations
Bk. E. Abut.	842+63.08	17.00	763.61
A	842+73.08	17.00	763.51
B	842+83.08	17.00	763.41
End E. Appr. Pav't.	842+93.08	17.00	763.31



PLAN

DESIGNED	LAS
CHECKED	DAZ
DRAWN	SAW
CHECKED	LAS

TOP OF SLAB ELEVATIONS
NORTHEAST APPROACH
F.A.P. ROUTE 301 (US 20)
OVER PRAIRIE ROAD
SECTION (2HB-2D)
WINNEBAGO COUNTY
STATION 841+89.60
STRUCTURE NO. 101-0051 (W.B.)
STRUCTURE NO. 101-0052 (E.B.)