

STATE OF ILLINOIS
DEPARTMENT OF TRANSPORTATION

ROUTE NO.	SECTION	COUNTY	SHEET NO.	SHEET NO.
F.A.P. 301 (US 20)	(2HB-2D)	WINNEBAGO	107	32
FED. ROAD DIST. NO. 7		ILLINOIS	FED. AID PROJECT	

Contract #64B07

NORTH CURB LINE

Location	Station	Offset	Theoretical Grade Elevations
Bk. E. Abut.	842+69.95	-17.00	763.55
C	842+79.95	-17.00	763.46
D	842+89.95	-17.00	763.37
End E. Appr. Pav't.	842+99.95	-17.00	763.28

NORTH EDGE OF PAVEMENT

Location	Station	Offset	Theoretical Grade Elevations
Bk. E. Abut.	842+71.10	-12.00	763.43
C	842+81.10	-12.00	763.55
D	842+91.10	-12.00	763.46
End E. Appr. Pav't.	843+01.10	-12.00	763.37

☉ EB ROADWAY & PGL

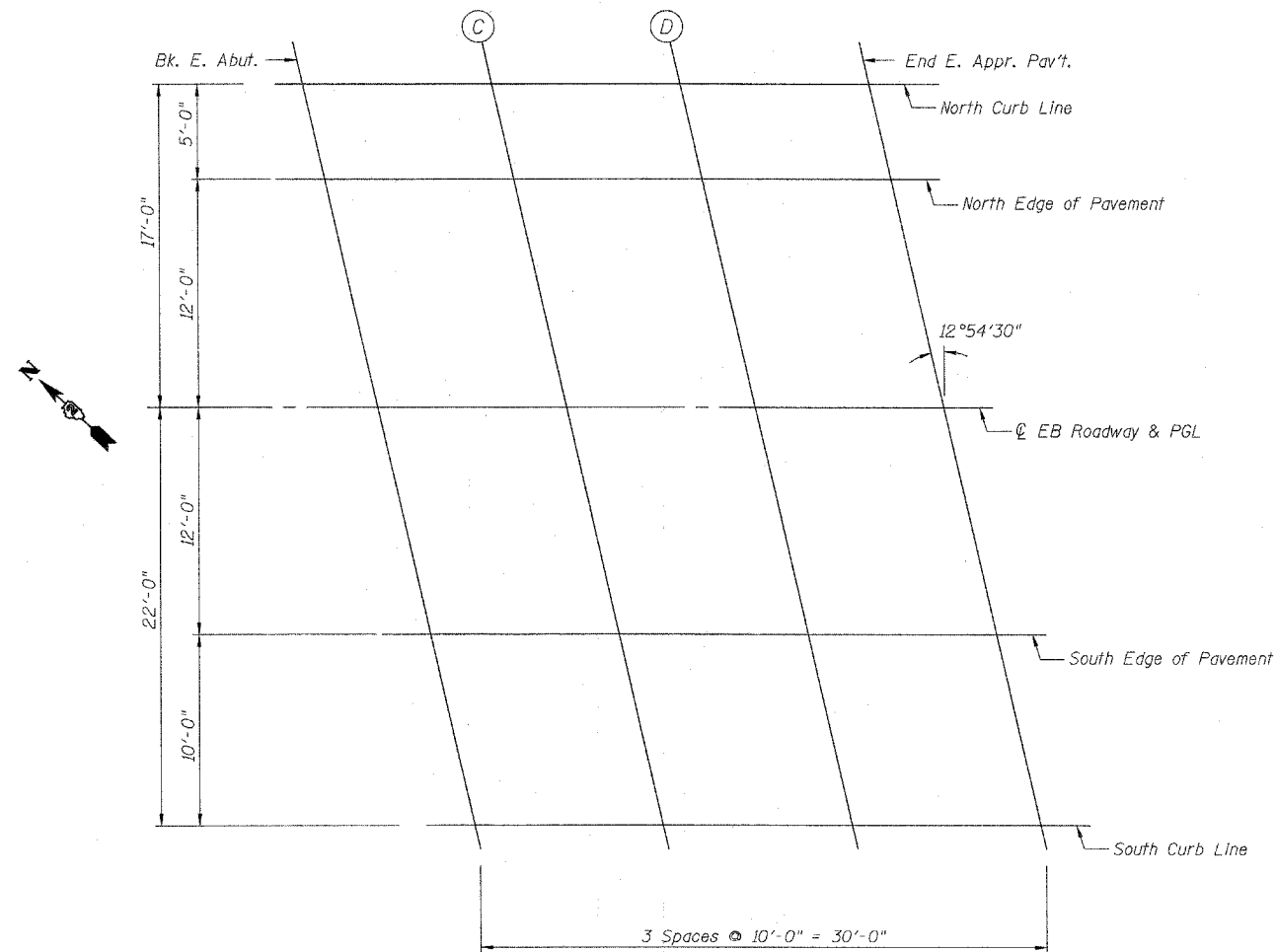
Location	Station	Offset	Theoretical Grade Elevations
Bk. E. Abut.	842+73.85	0.00	763.80
C	842+83.85	0.00	763.71
D	842+93.85	0.00	763.62
End E. Appr. Pav't.	843+03.85	0.00	763.53

SOUTH EDGE OF PAVEMENT

Location	Station	Offset	Theoretical Grade Elevations
Bk. E. Abut.	842+76.60	12.00	763.58
C	842+86.60	12.00	763.49
D	842+96.60	12.00	763.41
End E. Appr. Pav't.	843+06.60	12.00	763.32

SOUTH CURB LINE

Location	Station	Offset	Theoretical Grade Elevations
Bk. E. Abut.	842+78.89	22.00	763.35
C	842+88.89	22.00	763.36
D	842+98.89	22.00	763.28
End E. Appr. Pav't.	843+08.89	22.00	763.19



PLAN

DESIGNED	SSM
CHECKED	JLA
DRAWN	GYR
CHECKED	SSM

TOP OF SLAB ELEVATIONS
SOUTHEAST APPROACH
F.A.P. ROUTE 301 (US 20)
OVER PRAIRIE ROAD
SECTION (2HB-2D)
WINNEBAGO COUNTY
STATION 841+89.60
STRUCTURE NO. 101-0051 (W.B.)
STRUCTURE NO. 101-0052 (E.B.)