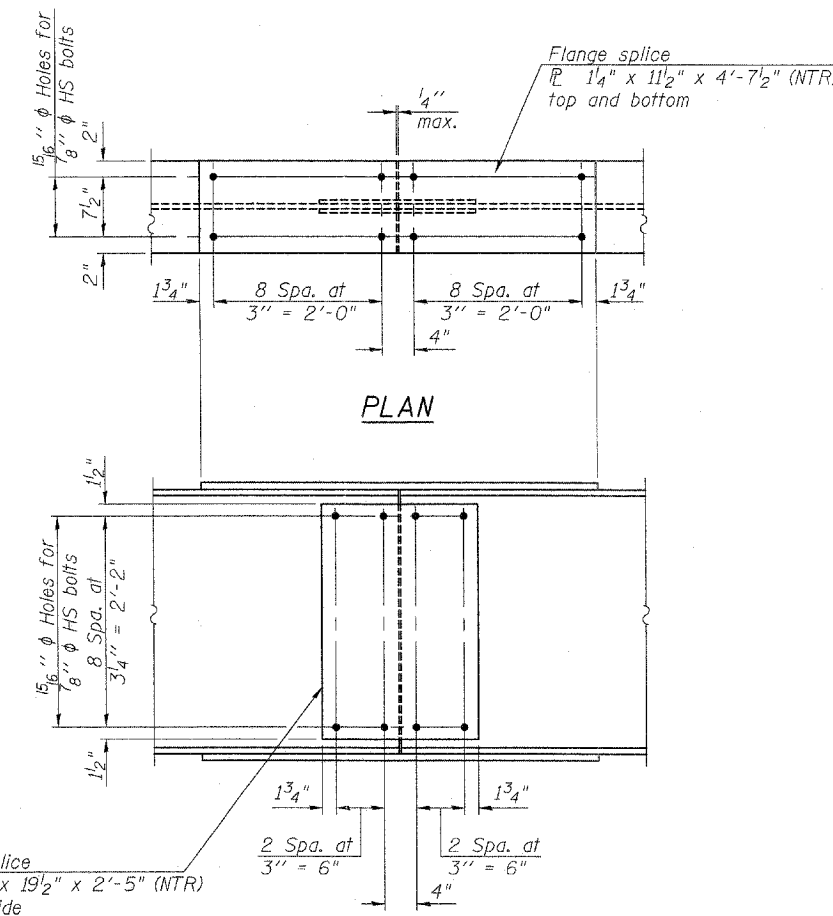
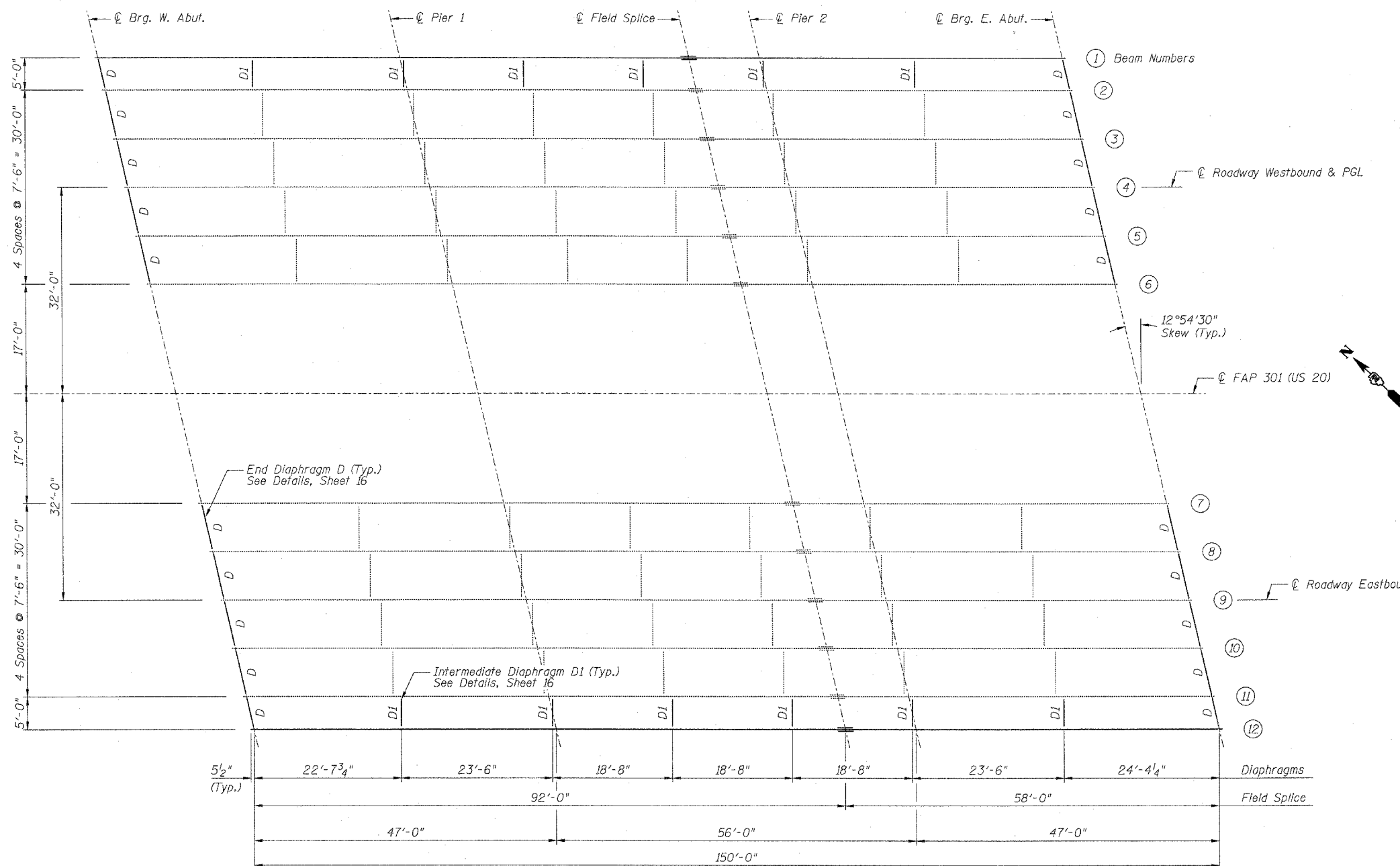


STATE OF ILLINOIS
DEPARTMENT OF TRANSPORTATION

ROUTE NO.	SECTION	COUNTY	TOTAL SHEETS	SHEET NO.
F.A.P. 301 (US 20)	(2HB-2)D	WINNEBAGO	107	37
FED. ROAD DIST. NO. 7	ILLINOIS	FED. AID PROJECT-		

SHEET NO. 15
43 SHEETS

Contract #64B07



SPLICE DETAIL BEAMS 1 & 12
(2 Required)

BILL OF MATERIAL

ITEM	UNIT	QUANTITY
Furnishing & Erecting Structural Steel	Pound	57,000
Stud Shear Connectors	Each	7,824
Anchor Bolts, 1"	Each	8
Structural Steel Removal	Pound	5,056

Note:
Contractor to verify existing dimensions in the field and make necessary approved adjustments prior to ordering materials.

All existing end diaphragms and angles to be removed. Replace with new steel. See End Diaphragm D Details on Sheet 16.

DESIGNED	LAS
CHECKED	DAZ
DRAWN	SAW
CHECKED	LAS

FRAMING PLAN
F.A.P. ROUTE 301 (US 20)
OVER PRAIRIE ROAD
SECTION (2HB-2)D
WINNEBAGO COUNTY
STATION 841+89.60
STRUCTURE NO. 101-0051 (W.B.)
STRUCTURE NO. 101-0052 (E.B.)

Plans Prepared by: Zroka Engineering, P.C.