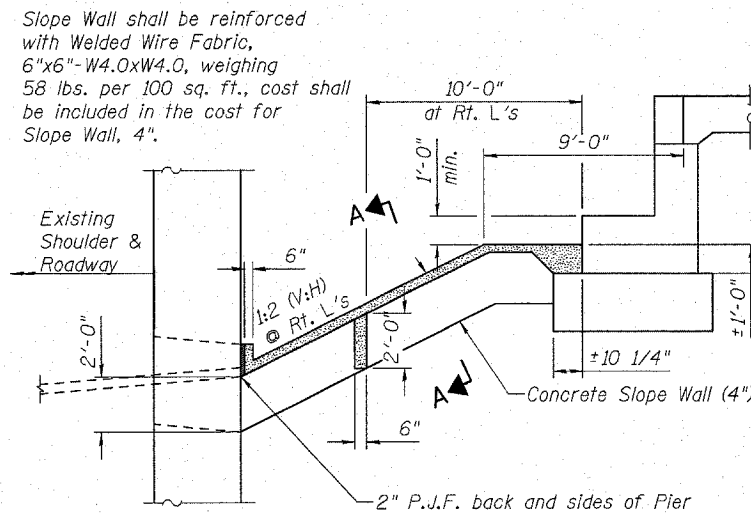


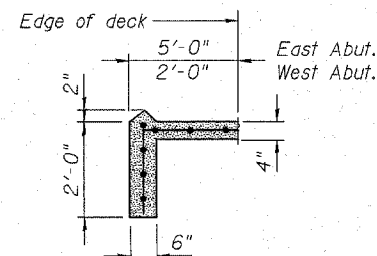
STATE OF ILLINOIS
DEPARTMENT OF TRANSPORTATION

ROUTE NO.	SECTION	COUNTY	TOTAL SHEETS	SHEET NO.	SHEET NO.
F.A.P. 301 (US 20)	(2HB -2)D	WINNEBAGO	107	58	43 SHEETS
FED. ROAD DIST. NO. 7	ILLINOIS	FED. AID PROJECT			

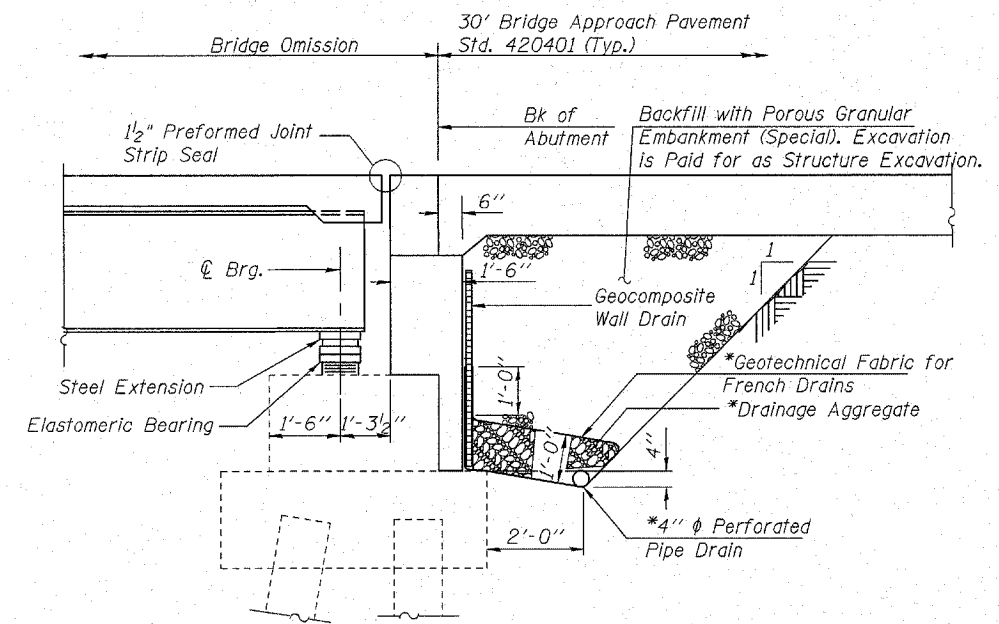
Contract #64B07



SECTION THRU SLOPE WALL



SECTION A-A



SECTION THRU PILE BENT ABUTMENT

(Horiz. dim. @ Rt. L's)

* Included in the cost of Pipe Underdrains for Structure, 4".

NOTES:

The cost for Non-Perforated Pipes to extend the pipe drains to the embankment side slopes shall be included in the cost for Pipe Underdrains for Structures, 4".

All drainage system components shall extend 2'-0" from the end of each wingwall except an outlet pipe shall extend until intersection with side slopes. The pipes shall drain into concrete headwalls. (See Article 601.05 of the Standard Specifications and Highway Standard 601.01)

DESIGNED	SSM
CHECKED	JLA
DRAWN	GYR
CHECKED	SSM

SLOPE WALL AND ABUTMENT
DRAINAGE DETAILS
F.A.P. ROUTE 301 (US 20)
OVER PRAIRIE ROAD
SECTION (2HB-2)D
WINNEBAGO COUNTY
STATION 841+89.60
STRUCTURE NO. 101-0051 (W.B.)
STRUCTURE NO. 101-0052 (E.B.)

Plans Prepared by: Kudrna & Associates, Ltd.