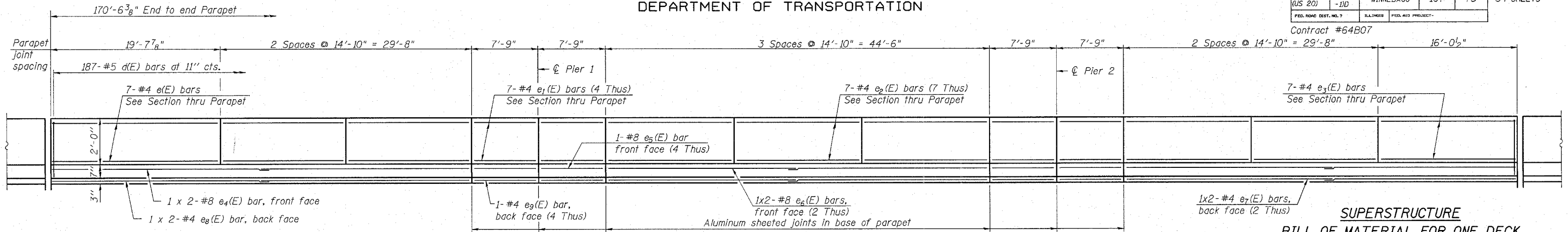


STATE OF ILLINOIS  
DEPARTMENT OF TRANSPORTATION

ROUTE NO.	SECTION	COUNTY	TOTAL SHEETS	SHEET NO.	SHEET NO. 10
F.A.P. 301 (US 20)	2HB-1D	WINNEBAGO	107	75	34 SHEETS
FED. ROAD DIST. NO. 7	BALTIMORE	FED. AID PROJECT-			

Contract #64B07



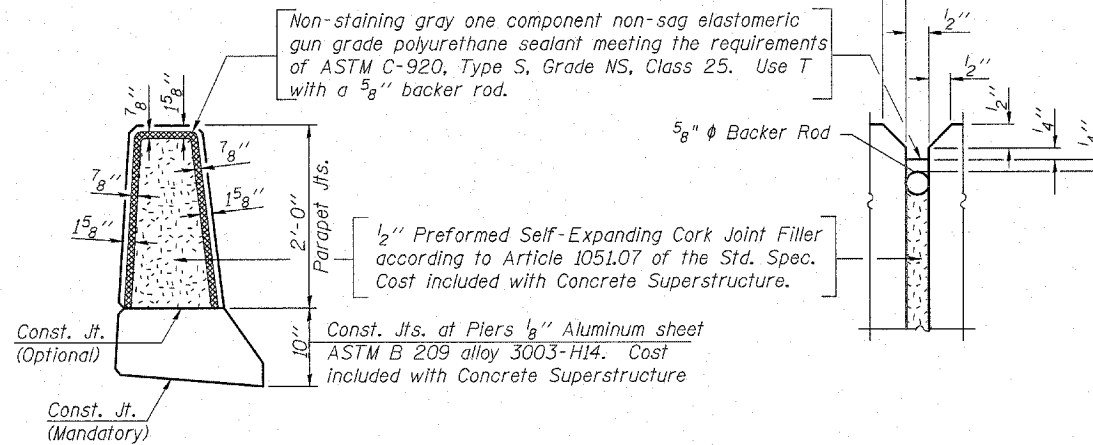
**SUPERSTRUCTURE  
BILL OF MATERIAL FOR ONE DECK**

Bar	No.	Size	Length	Shape
a(E)	648	#5	41'-6"	—
a <sub>1</sub> (E)	342	#6	6'-0"	—
a <sub>2</sub> (E)	16	#8	30'-4"	—
a <sub>3</sub> (E)	16	#5	1'-6"	—
a <sub>4</sub> (E)	4	#7	29'-10"	—
a <sub>5</sub> (E)	24	#7	8'-10"	—
a <sub>6</sub> (E)	6	#7	6'-5"	—
b(E)	308	#5	26'-2"	—
b <sub>1</sub> (E)	41	#6	32'-0"	—
b <sub>2</sub> (E)	258	#5	30'-7"	—
b <sub>3</sub> (E)	41	#6	30'-3"	—
d(E)	374	#5	5'-7"	—
d <sub>1</sub> (E)	374	#5	8'-4"	—
e(E)	14	#4	19'-4"	—
e <sub>1</sub> (E)	56	#4	7'-5"	—
e <sub>2</sub> (E)	98	#4	14'-6"	—
e <sub>3</sub> (E)	14	#4	15'-8"	—
e <sub>4</sub> (E)	4	#8	29'-10"	—
e <sub>5</sub> (E)	8	#8	7'-5"	—
e <sub>6</sub> (E)	8	#8	25'-2"	—
e <sub>7</sub> (E)	8	#4	24'-7"	—
e <sub>8</sub> (E)	4	#4	26'-5"	—
e <sub>9</sub> (E)	8	#4	7'-5"	—
x(E)	76	#5	4'-1"	—
x <sub>1</sub> (E)	76	#5	5'-11"	—

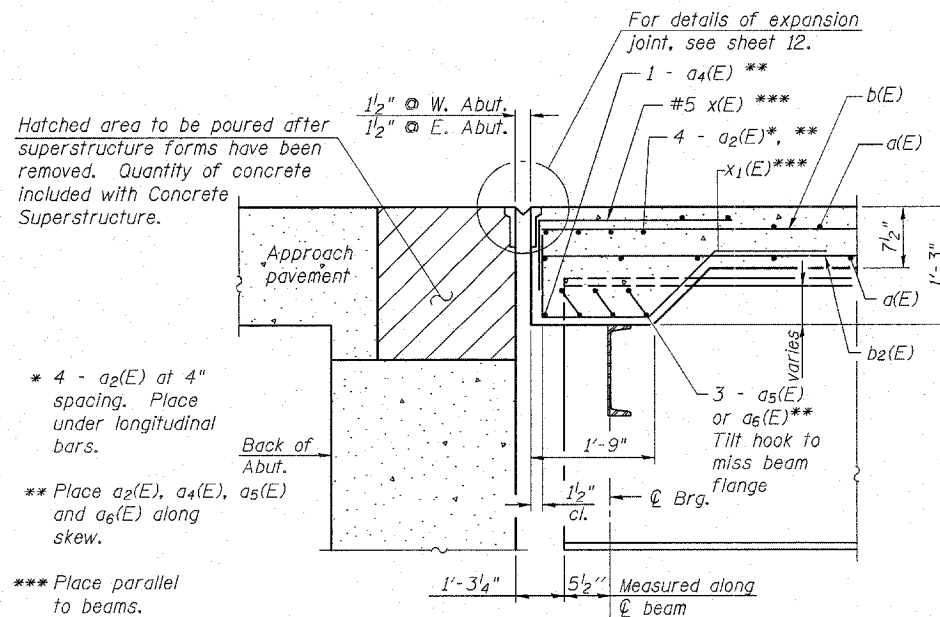
Item	Unit	Quantity
Reinforcement Bars, Epoxy Coated	Pound	62,710
Concrete Superstructure	Cu. Yd.	231
Bridge Deck Grooving	Sq. Yd.	700
Protective Coat	Sq. Yd.	886

Bars indicated thus 1x2-#5 etc. indicates 1 line of bars with 2 lengths per line.

**INSIDE ELEVATION OF PARAPET**



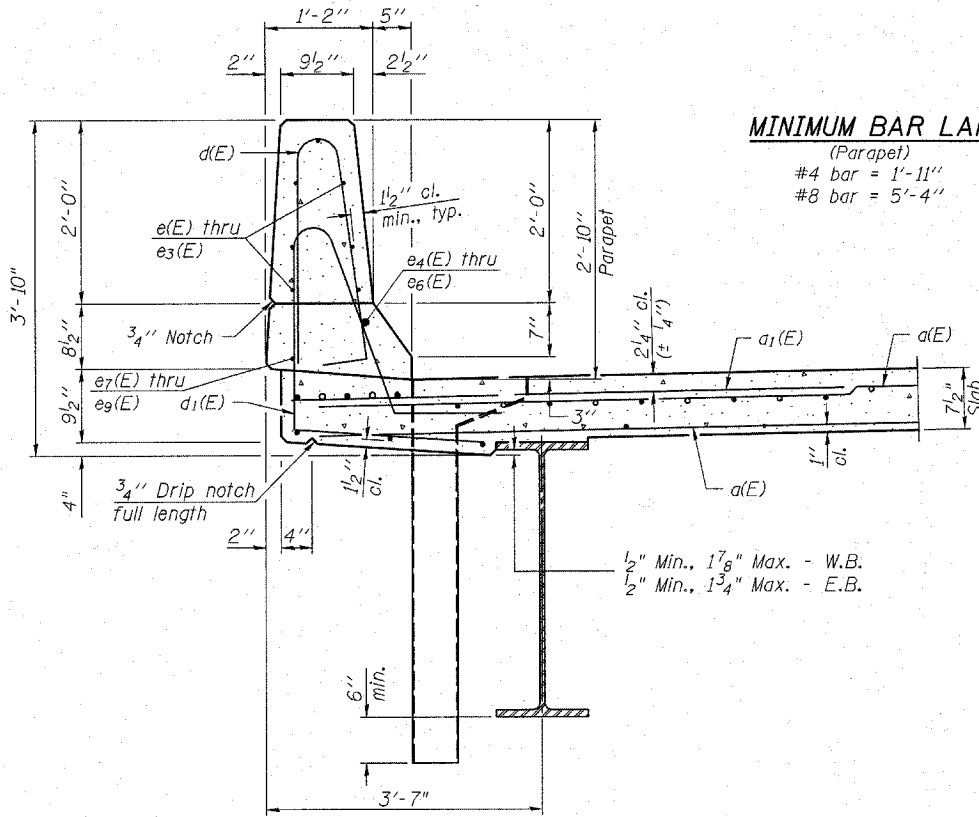
**PARAPET JOINT DETAILS**



**SECTION B-B**

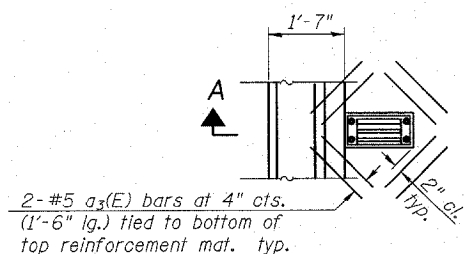
**MINIMUM BAR LAP**

(Parapet)  
#4 bar = 1'-11"  
#8 bar = 5'-4"

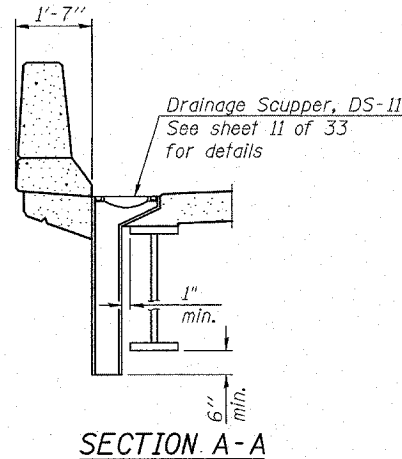


**SECTION THRU PARAPET**

**PLAN**



Note:  
Cut longitudinal reinforcement to clear drainage scuppers.



**SECTION A-A**

DESIGNED	SSM
CHECKED	JLA
DRAWN	GYR
CHECKED	SSM

Plans Prepared by: Kudrna & Associates, Ltd.

**SUPERSTRUCTURE DETAILS  
F.A.P. ROUTE 301 (US 20)  
OVER SIMPSON ROAD  
SECTION (2HB-1D)  
WINNEBAGO COUNTY  
STATION 849+27.97  
STRUCTURE NO. 101-0053 (W.B.)  
STRUCTURE NO. 101-0054 (E.B.)**