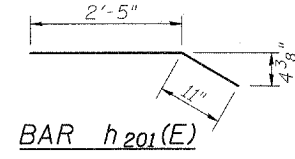
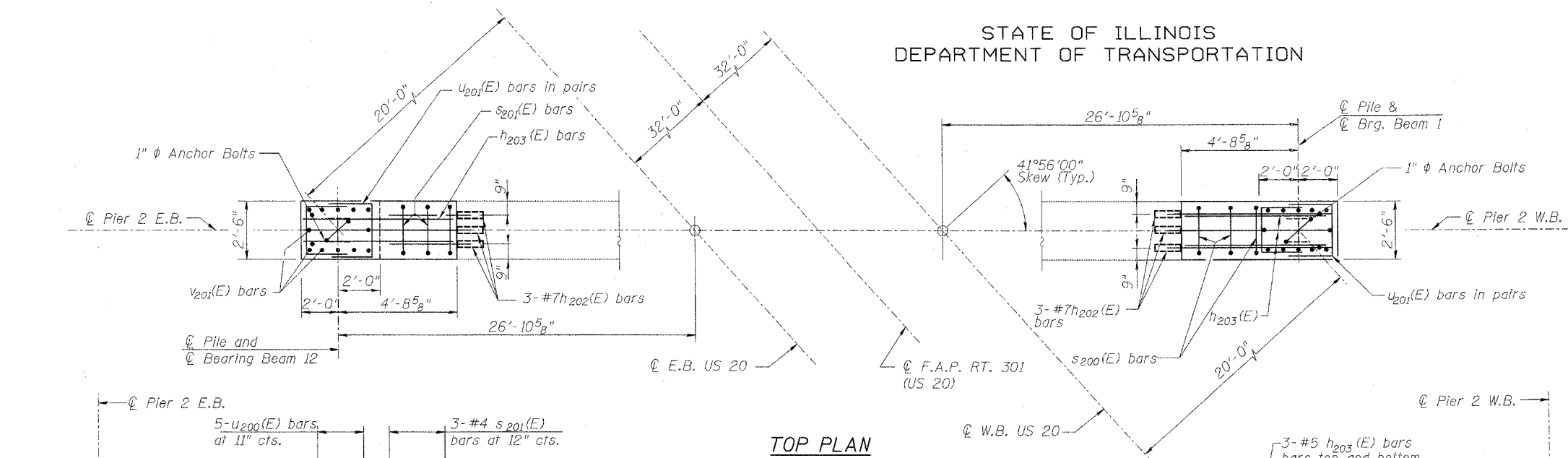


STATE OF ILLINOIS
DEPARTMENT OF TRANSPORTATION

ROUTE NO.	SECTION	COUNTY	TOTAL SHEETS	SHEET NO.
F.A.P. 301 (US 20)	(2HB-1)D	WINNEBAGO	107	92
FED. ROAD DIST. NO. 7		ILLINOIS	FED. AID PROJECT-	

SHEET NO. 27
34 SHEETS

Contract #64B07



PILE DATA

Type : HP 12x53
Nominal Required Bearing: 418 kips
Allowable Resistance Available : 142 kips
Est. Length : 70'
No. Production Piles: 2
No. Test Piles: None

MIN. BAR LAPS

#5 (E) bars = 2'-2"

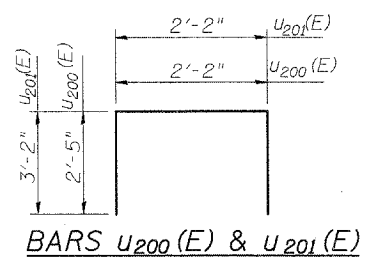
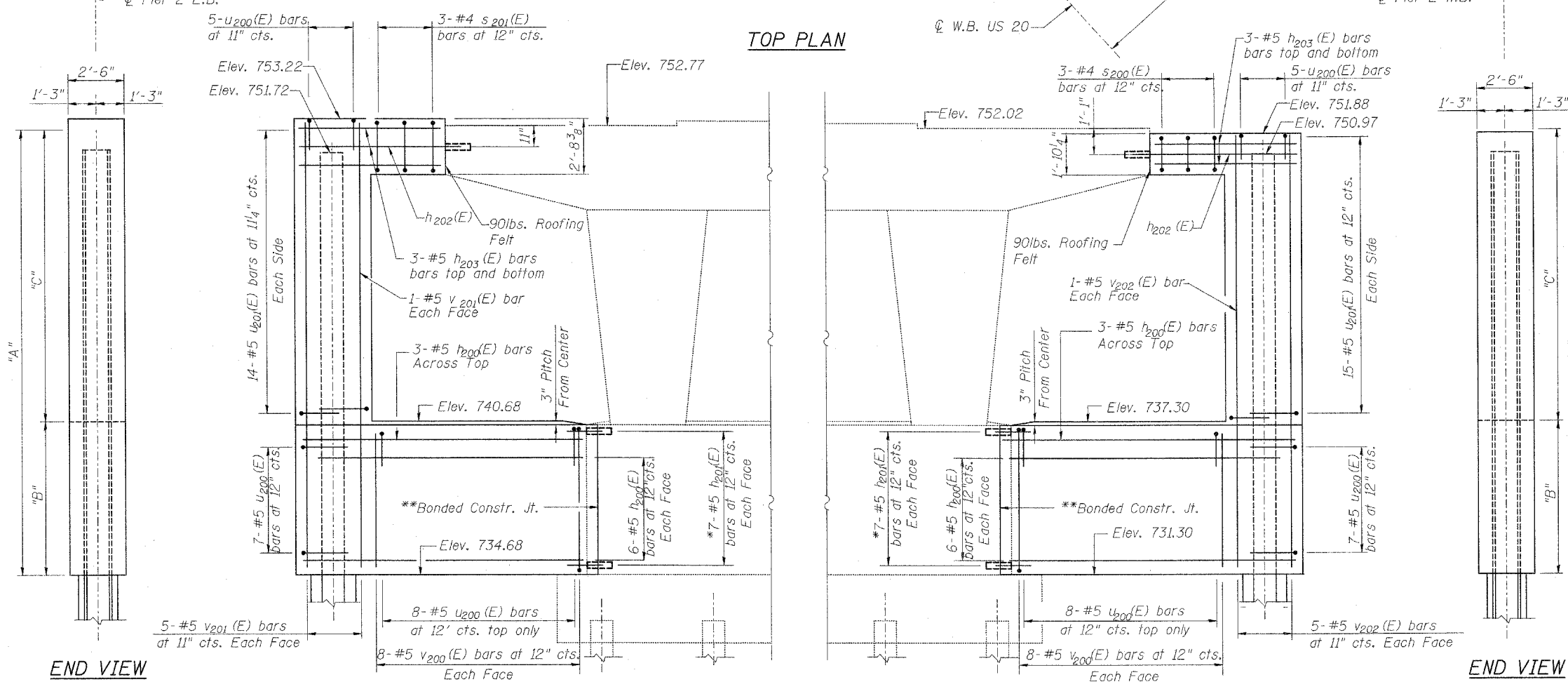
PIER DIMENSIONS

	A	B	C
Pier 2 W.B.	20'-7"	6'-0"	14'-7"
Pier 2 E.B.	18'-6 1/2"	6'-0"	12'-6 1/2"

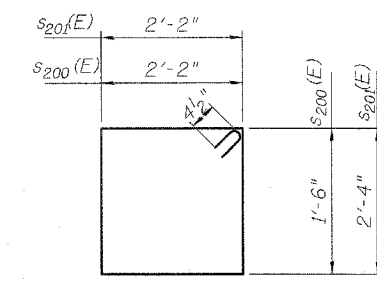
BILL OF MATERIAL FOR TWO PIERS

Bar	No.	Size	Length	Shape
h200(E)	30	#5	10'-8"	
h201(E)	28	#5	3'-4"	
h202(E)	6	#7	7'-6"	
h203(E)	12	#5	6'-6"	
s200(E)	3	#4	8'-4"	□
s201(E)	3	#4	9'-9"	□
u200(E)	40	#5	7'-0"	□
u201(E)	58	#5	8'-6"	□
v200(E)	32	#5	5'-5"	
v201(E)	12	#5	18'-2"	
v202(E)	12	#5	20'-3"	

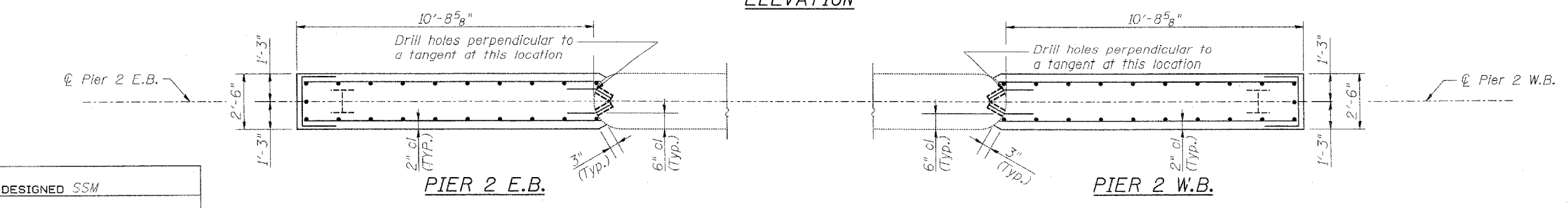
Item	Unit	Quantity
Structure Excavation	Cu. Yd.	20.8
Concrete Structures	Cu. Yd.	23.1
Reinforcement Bars, Epoxy Coated	Pound	2,120
Furnishing Steel Piles, HP12x53	Foot	140
Driving Piles	Foot	110
Concrete Encasement	Cu. Yd.	0.8
Concrete Sealer	Sq. Ft.	681



BARS u200(E) & u201(E)



BAR s200(E) & s201(E)



Notes:
Space reinforcement in cap to miss anchor bolts.
* Drill 7/8" φ x 9" min. holes for h201(E) bars and 1" φ x 12" holes for h202(E) bars.
Epoxy grout h201(E) and h202(E).
** Bonded construction joint in accordance with Article 503.09 (b) of the standard specifications.
*** Bar to be used at one pier only.
Concrete Sealer shall be applied to all permanently exposed portions of the crash walls, columns and pier caps, new concrete only.

PIER 2 - W.B. & E.B.
F.A.P. ROUTE 301 (US 20)
OVER SIMPSON ROAD
SECTION (2HB-1)D
WINNEBAGO COUNTY
STATION 849+27.97
STRUCTURE NO. 101-0053 (W.B.)
STRUCTURE NO. 101-0054 (E.B.)

DESIGNED	SSM
CHECKED	JLA
DRAWN	GYR
CHECKED	SSM