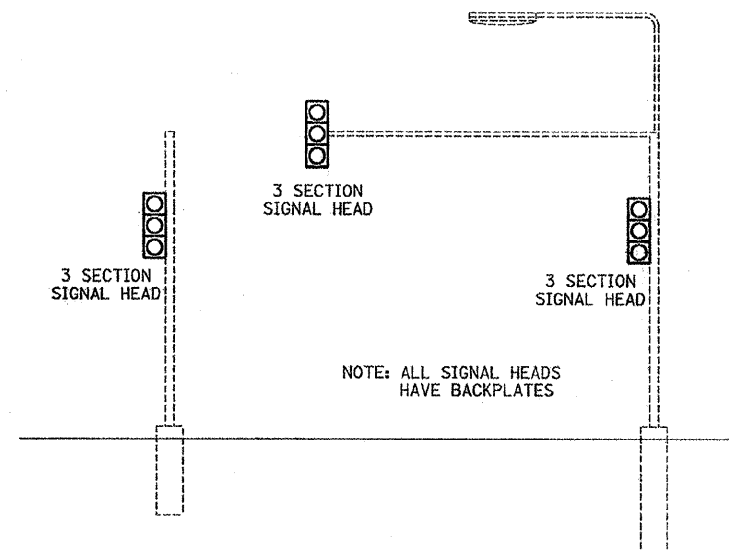
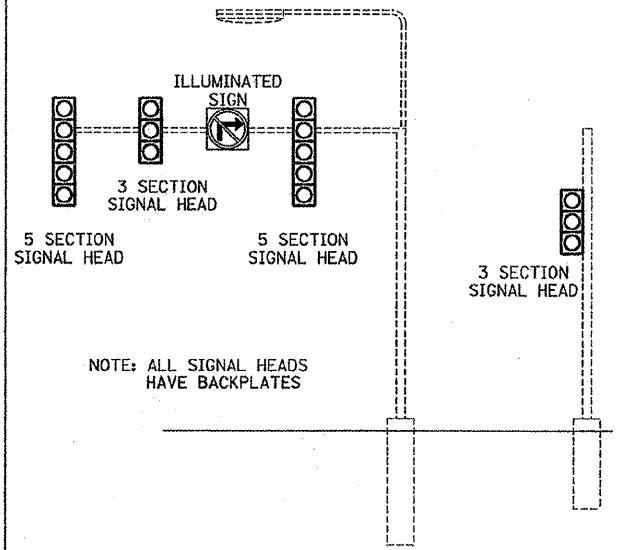


ELECTRICAL LOAD FOR INTERSECTION				
STREET NAME	COMPONENT	NUMBER	WATTAGE EACH	BURNTIME %
US ROUTE 34	RED	10	10	74
	YELLOW	10	19	5
	GREEN	10	14	21
	YELLOW ARROW-LT.	4	9	5
	GREEN ARROW-LT.	4	3.4	21
	YELLOW ARROW-RT.	4	9	5
	GREEN ARROW-RT.	4	3.4	21
	R3-1 LED BLANK OUT	2	10	5
	R3-2 LED BLANK OUT	2	10	5
DUVICK AVENUE	RED	11	10	68
	YELLOW	11	19	5
	GREEN	7	14	27
TRAFFIC SIGNAL CABINET	CONTROLLER	1	6	100
	VEHICLE DETECTORS	10	4	100
	UPS	1	50	100
HIGHWAY LIGHTING	HPS LUMINAIRE	5	250	50

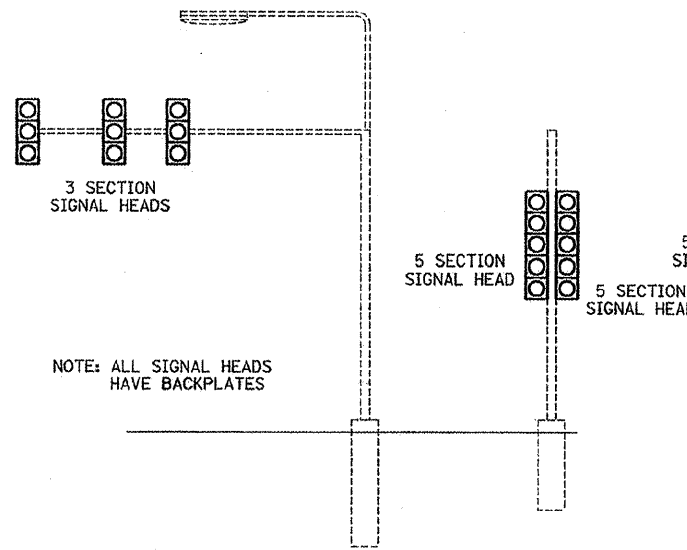
AGENCY RESPONSIBLE FOR TRAFFIC SIGNAL ENERGY CHARGES: CITY OF SANDWICH  
 (NOTE: SEPERATE ENERGY BILLS FOR HIGHWAY LIGHTING AND TRAFFIC SIGNALS SHALL BE SUBMITTED TO THE CITY OF SANDWICH.  
 144 E. RAILROAD STREET  
 SANDWICH, IL. 60548  
 (815)786-9321



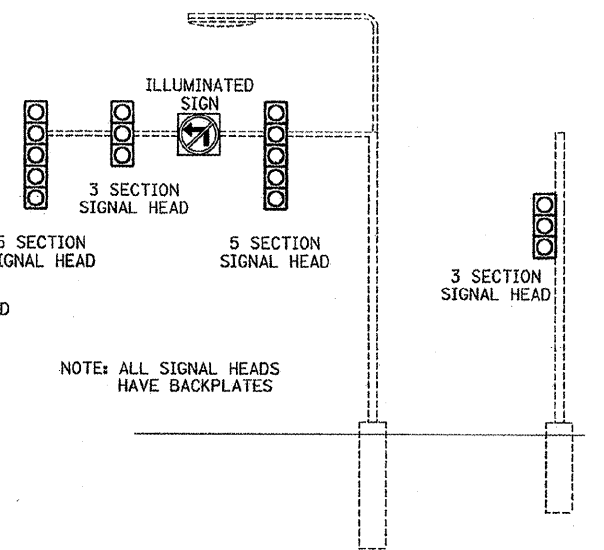
SOUTHBOUND (NORTH OF RAILROAD TRACKS)  
NOT TO SCALE



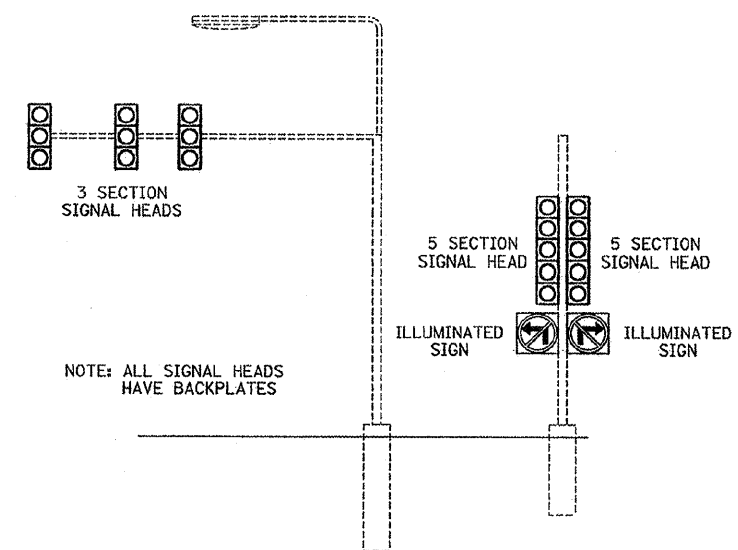
NORTHWEST CORNER  
NOT TO SCALE



SOUTHWEST CORNER  
NOT TO SCALE



SOUTHEAST CORNER  
NOT TO SCALE



NORTHEAST CORNER  
NOT TO SCALE

US ROUTE 34 / DUVICK AVENUE

PLOT DATE = 5/07  
 FILE NAME = TSDET.DGN  
 PLOT SCALE = 1" = 20'  
 USER NAME = ARR

REVISIONS	
NAME	DATE

ILLINOIS DEPARTMENT OF TRANSPORTATION  
 TRAFFIC SIGNAL DETAILS  
 FAP 591 (US 34)  
 SECTION (15R) TS  
 DEKALB-KENDALL COUNTY  
 SCALE: VERT. DATE 5/07  
 DRAWN BY ARR  
 CHECKED BY JLS