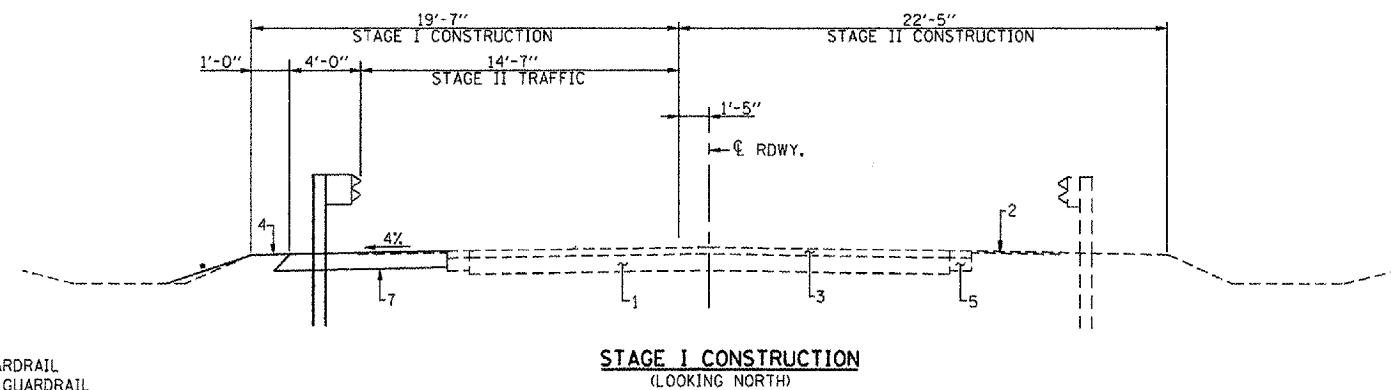
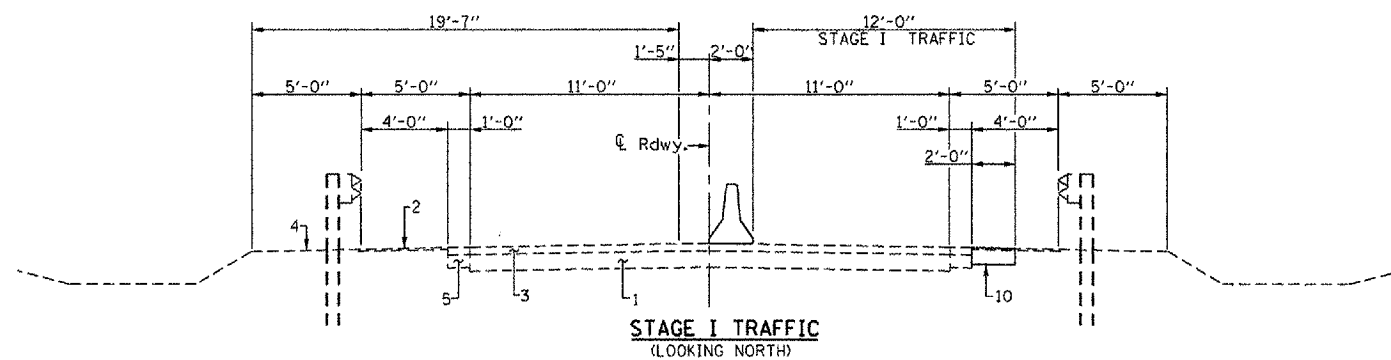
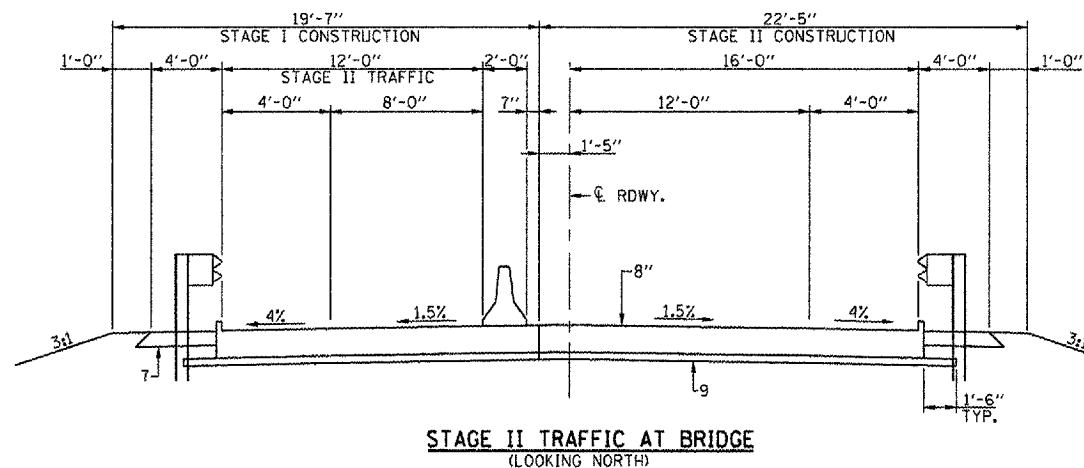
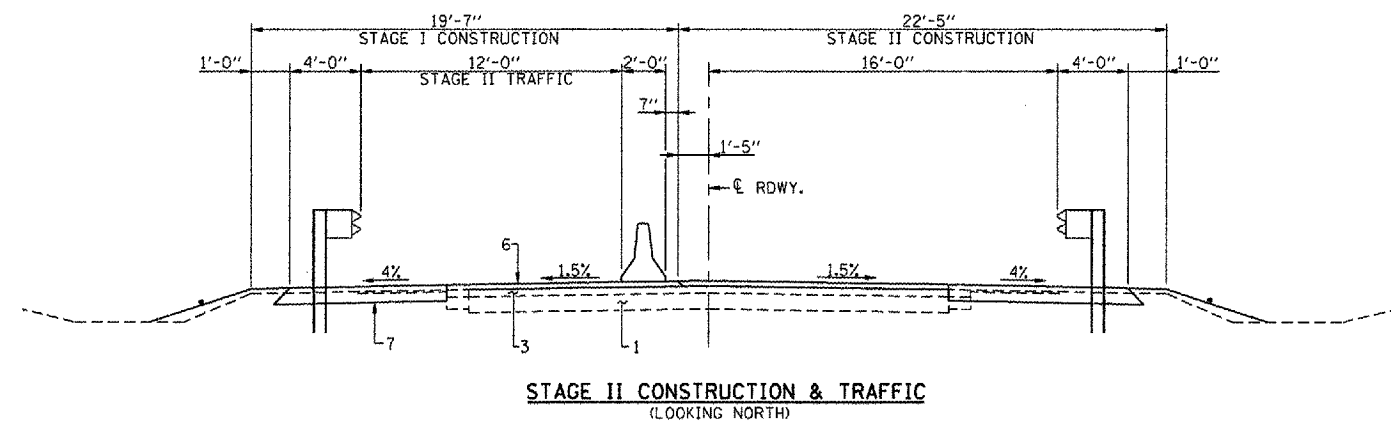


F.A.P. RTE.	SECTION	COUNTY	TOTAL SHEETS	SHEET NO.
656	(II)	TAZEWELL	32	7
STA. 162+78.50		TO STA. 170+28.50		
FED. ROAD DIST. NO. - ILLINOIS FED. AID PROJECT				



• - 3:1 AT GUARDRAIL
4:1 AT NO GUARDRAIL



PAVEMENT LEGEND

1. EXISTING P.C.C. PAVEMENT
2. EXISTING AGGREGATE SHOULDER
3. EXISTING HOT MIX ASPHALT OVERLAY 4" - 6"
4. EARTH SHOULDER
5. EXISTING HOT MIX ASPHALT SHOULDER
6. PROPOSED HOT MIX ASPHALT SURFACE COURSE, MIXTURE C N50 (1 1/2" MIN.)
7. PROPOSED HOT MIX ASPHALT SHOULDER (8")
8. PROPOSED CONCRETE BRIDGE APPROACH PAVEMENT
9. SUB-BASE GRANULAR MATERIAL, TYPE A
10. HOT MIX ASPHALT BASE COURSE WIDENING (8")
11. PAINT PAVEMENT MARKING - LINE 4"

NOTE: WORK THIS SHEET WITH SHEETS 8 & 9 OF 31.

STAGE CONSTRUCTION TRAFFIC DETAILS
IL. ROUTE 29 OVER CRANE CREEK
F.A.P. ROUTE 656 - SECTION (II)
TAZEWELL COUNTY
STA. 166+53.50
S.N. 090-0053

PLOT DATE = 8/14/88
JOB NO. = 184-001907
MODEL NAME = BRIDGE.DWG