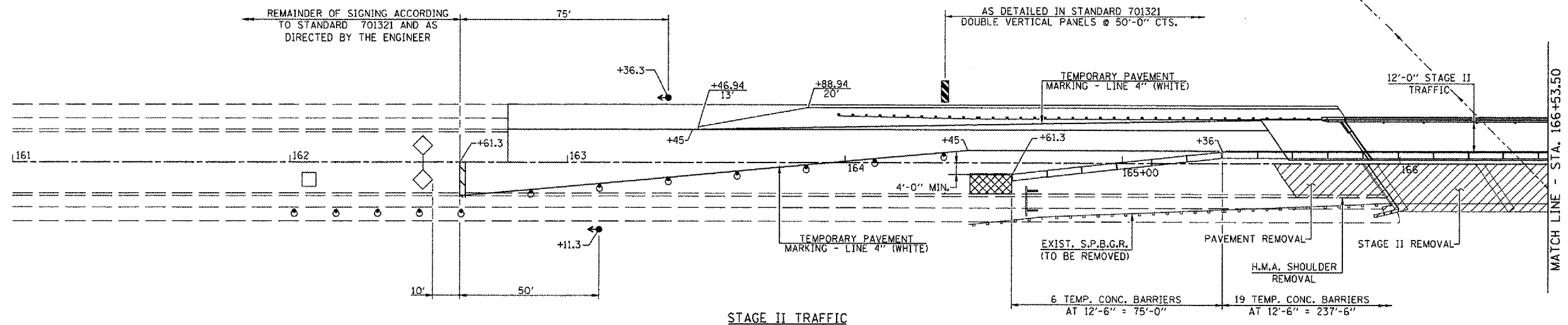
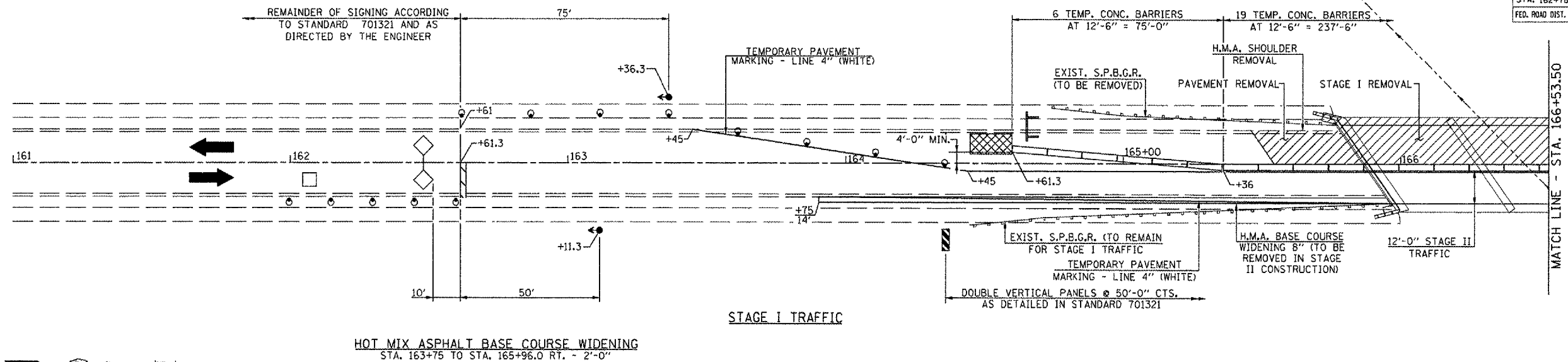


F.A.P. RTE.	SECTION	COUNTY	TOTAL SHEETS	SHEET NO.
656	(I)	TAZEWELL	32	8
STA. 162+78.50		TO STA. 170+28.50		
FED. ROAD DIST. NO. 1		ILLINOIS		FED. AID PROJECT



**SUGGESTED STAGE CONSTRUCTION SEQUENCE**

**STAGE I**

1. CONSTRUCT H.M.A. BASE COURSE WIDENING 8" RT. STA. 163+75 TO STA. 165+96 & STA. 167+28.7 TO STA. 169+35- (2'-0" WIDE).
2. ERECT TRAFFIC CONTROL FOR STAGE I.
3. REMOVE EXISTING SUPERSTRUCTURE LEFT, @ STA. 166+53.50.
4. CONSTRUCT PROPOSED STAGE I REINFORCED CONCRETE SUPERSTRUCTURE AND SUBSTRUCTURE UNITS.
5. CONSTRUCT PROPOSED H.M.A. SHOULDERS LT. STA. 163+46.94 TO STA. 165+75.97 & STA. 167+08.63 TO STA. 170+28.50.
6. CONSTRUCT PROPOSED GUARDRAIL & TERMINALS LT. STA. 163+98.94 TO STA. 165+67.08 & STA. 167+48.05 TO STA. 169+71.94.
7. CONSTRUCT P.C.C. APPROACH PAVEMENT COURSE AND H.M.A. SURFACE COURSE.

**STAGE II**

1. ERECT TRAFFIC CONTROL FOR STAGE II.
2. REMOVE EXISTING SUPERSTRUCTURE RT. @ STA. 166+53.50
3. CONSTRUCT PROPOSED STAGE II REINFORCED CONCRETE SUPERSTRUCTURE AND SUBSTRUCTURE UNITS.
4. CONSTRUCT PROPOSED H.M.A. SHOULDERS SHOULDERS RT. STA. 162+78.50 TO STA. 165+98.37 & STA. 167+31.03 TO STA. 169+60.06.
5. CONSTRUCT PROPOSED GUARDRAIL & TERMINALS RT. STA. 163+35.06 TO STA. 165+89.59 & STA. 167+39.81 TO STA. 169+08.06.
6. CONSTRUCT P.C.C. APPROACH PAVEMENT COURSE AND H.M.A. SURFACE COURSE.

**FINAL**

1. INSTALL SHORT-TERM PAVEMENT MARKINGS AND REMOVE ALL STAGE TRAFFIC CONTROL AND RE-ESTABLISH NORMAL TRAFFIC PATTERNS.
2. REMOVE SHORT TERM PAVEMENT MARKINGS AND COMPLETE FINAL STRIPING, SEEDING AND MISCELLANEOUS CLEANUP.

**GENERAL NOTES**

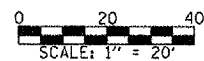
1. THIS TRAFFIC CONTROL DETAIL SHALL BE USED IN CONJUNCTION WITH STANDARD 701321 AND 701326 (WIDENING).
2. THE CONTRACTOR SHALL NOTIFY THE DISTRICT 4 TRAFFIC SECTION OF THE BUREAU OF OPERATIONS AT LEAST ONE WEEK PRIOR TO IMPLEMENTING STAGE TRAFFIC CONTROL.
3. EXISTING PAVEMENT MARKINGS THAT CONFLICT WITH THE REVISED STAGE TRAFFIC PATTERNS DURING ALL PHASES OF STAGE CONSTRUCTION SHALL BE REMOVED AS SPECIFIC IN SECTION 783 OF THE STANDARD SPECIFICATIONS AND PAID FOR AS "PAVEMENT MARKING REMOVAL".
4. THE CONTRACTOR SHALL MAINTAIN FULL OPERATIONAL STATUS OF ALL SIDEROADS AND ACCESS TO ALL PRIVATE AND COMMERCIAL PROPERTIES DURING ALL PHASES OF CONSTRUCTION.
5. EACH DETECTOR LOOP SHALL BE CONNECTED TO A SEPARATE DETECTOR AMPLIFIER.
6. SIGNING FOR STAGE II SAME AS STAGE I.

**SYMBOLS**

- WORK AREA
- SIGN
- TYPE III BARRICADE
- DRUM WITH STEADY BURNING LIGHT
- TRAFFIC SIGNAL
- TEMPORARY RUMBLE STRIP
- INDUCTION LOOP DETECTOR
- DOUBLE VERTICAL PANEL
- TYPE C BIDIRECTIONAL REFLECTOR
- TEMPORARY CONCRETE BARRIER
- IMPACT ATTENUATOR
- STEADY BURNING LIGHTS AND DOUBLE VERTICAL PANELS

WORK THIS SHEET WITH SHEETS 7 & 9 OF 31.  
SEE SHEET NO. 9 FOR TRAFFIC CONTROL & TEMPORARY PAVEMENT MARKING SCHEDULES.

**STAGE CONSTRUCTION TRAFFIC DETAILS**  
IL. ROUTE 29 OVER CRANE CREEK  
F.A.P. ROUTE 656 - SECTION (I)  
TAZEWELL COUNTY  
STA. 166+53.50  
S.N. 090-0053



PLOT DATE: # DATES  
FILE NAME: # FILES  
MODEL NAME: # MODEL NAMES