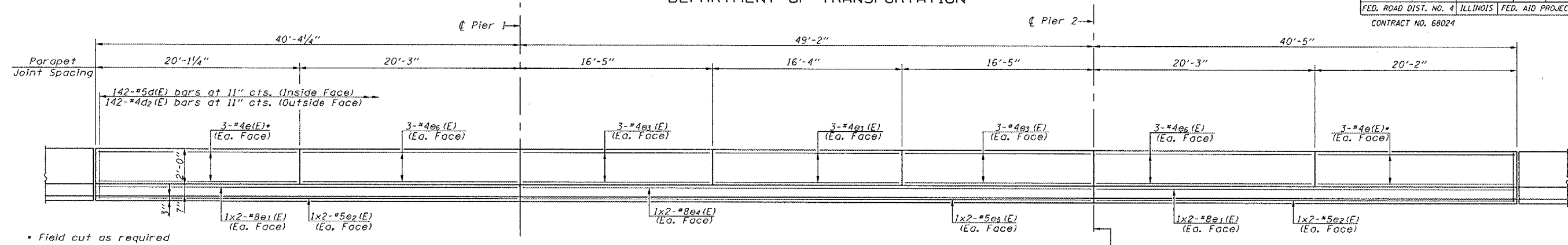


STATE OF ILLINOIS
DEPARTMENT OF TRANSPORTATION

ROUTE NO.	SECTION	COUNTY	TOTAL SHEETS	SHEET NO.
F.A.P. 656	(I)	TAZEWELL	32	17
FED. ROAD DIST. NO. 4		ILLINOIS	FED. AID PROJECT	
CONTRACT NO. 68024				

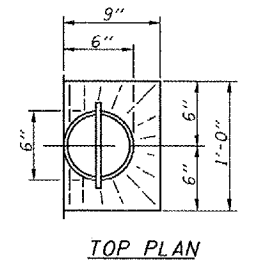
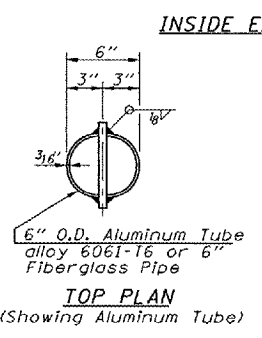
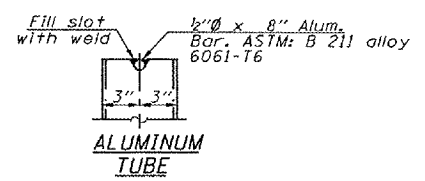
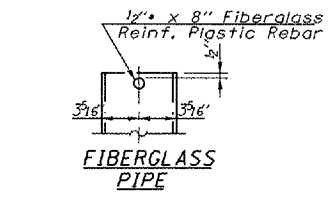
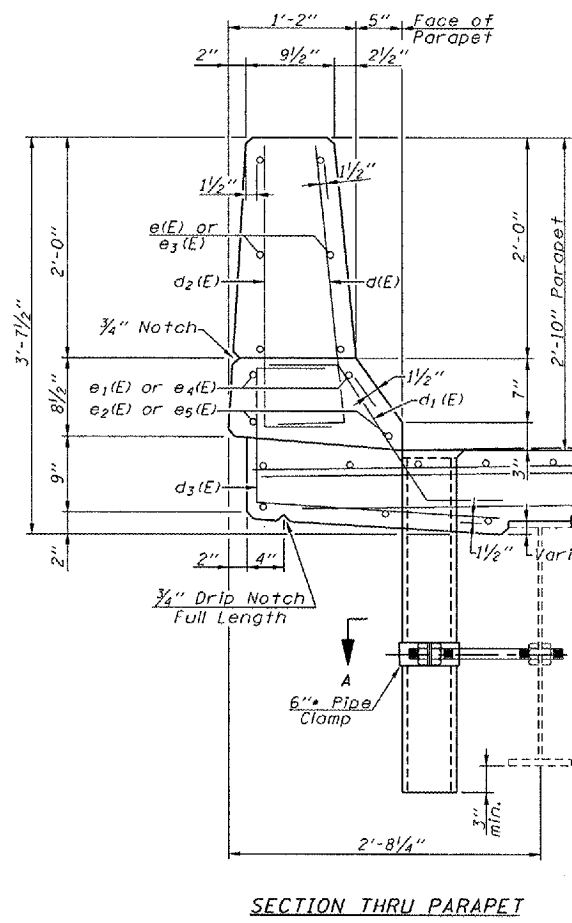
SHEET NO. 6
OF 18 SHEETS



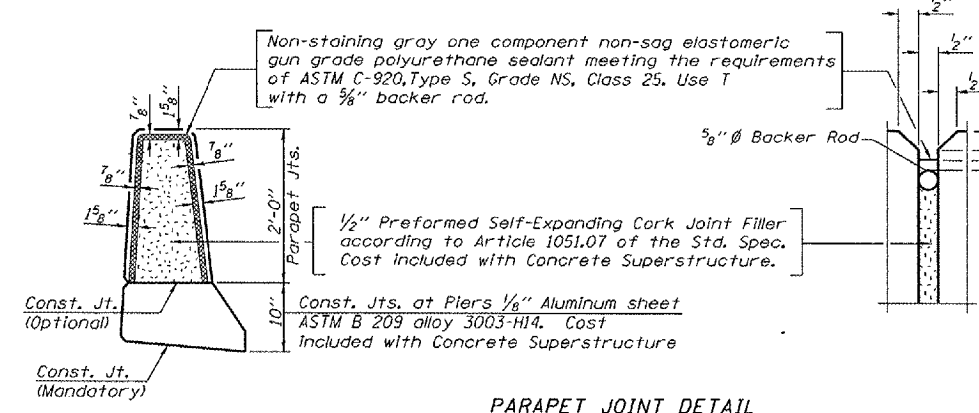
* Field cut as required

PARAPET MIN. BAR LAPS

- *4 Bars = 1'-8"
- *5 Bars = 2'-2"
- *8 Bars = 4'-6"

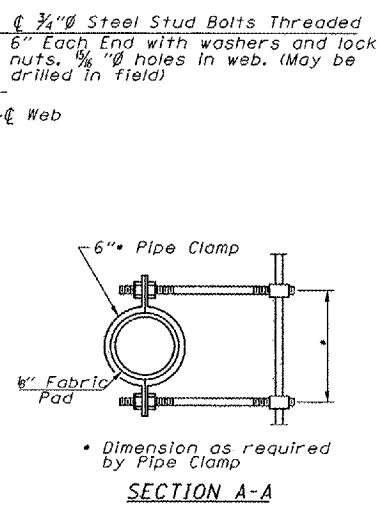
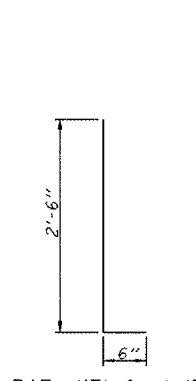
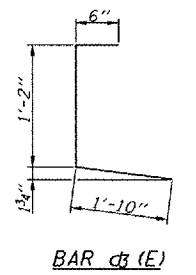


INSIDE ELEVATION OF PARAPET

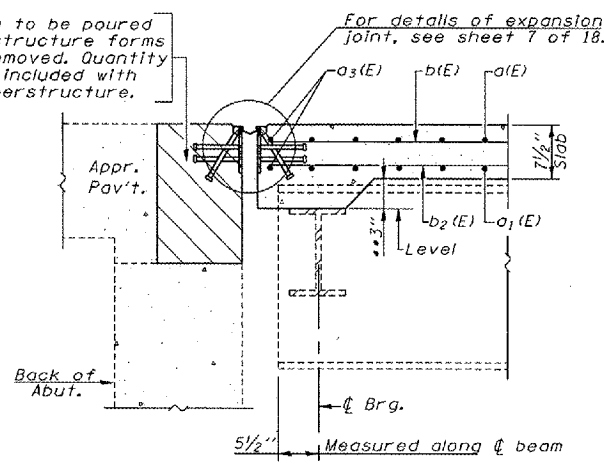


Notes:
Floor drains shall not be painted.
Fiberglass pipe shall conform to ASTM D 2996 with short-time rupture strength hoop tensile stress of 30,000 p.s.i. minimum.

PARAPET JOINT DETAIL



Hatched area to be poured after superstructure forms have been removed. Quantity of concrete included with Concrete Superstructure.



SECTION A-A

** Dimension at beam No. 1 (S. Abut.) & beam No. 6 (N. Abut.)
Dimension taken from exist. plans.

SUPERSTRUCTURE BILL OF MATERIAL

Bar	No.	Size	Length	Shape
a(E)	206	#5	15'-8"	—
a1(E)	155	#5	14'-9"	—
a2(E)	206	#6	4'-6"	—
a3(E)	206	#5	18'-6"	—
a4(E)	154	#5	17'-7"	—
a5(E)	4	#5	19'-2"	—
a6(E)	4	#5	22'-6"	—
b(E)	152	#5	34'-0"	—
b1(E)	70	#6	31'-1"	—
b2(E)	155	#5	27'-8"	—
d(E)	284	#5	3'-0"	L
d1(E)	284	#5	2'-5"	L
d2(E)	284	#4	3'-0"	L
d3(E)	284	#4	3'-6"	L
e(E)	24	#4	20'-9"	—
e1(E)	16	#8	23'-0"	—
e2(E)	16	#5	21'-10"	—
e3(E)	36	#4	16'-1"	—
e4(E)	8	#8	26'-9"	—
e5(E)	8	#5	25'-7"	—
e6(E)	24	#4	20'-0"	—
Reinforcement Bars, Epoxy Coated			Pounds	33260
Concrete Superstructure			Cu. Yds.	147.8
Floor Drains			Each	14
Bar Splicers			Each	360

Reinforcement bars designated (E) shall be epoxy coated.
Bars indicated thus 1x "X" #5 etc. indicates 1 line of bars with "X" lengths per line.

SUPERSTRUCTURE DETAILS
IL. ROUTE 29 OVER CRANE CREEK
F.A.P. ROUTE 656 - SECTION (I)
TAZEWELL COUNTY
STA. 166+53.50
S.N. 090-0053

DESIGNED - MAH
CHECKED - APH
DRAWN - JRP
CHECKED - MAH