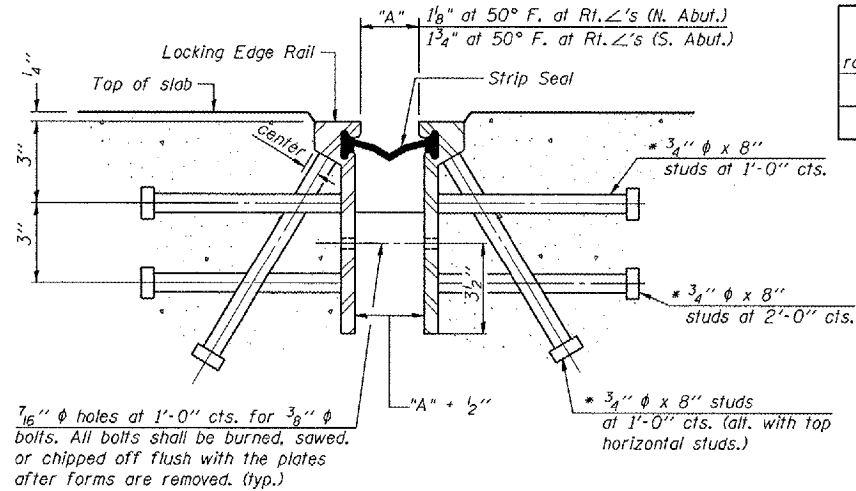


STATE OF ILLINOIS  
DEPARTMENT OF TRANSPORTATION

ROUTE NO.	SECTION	COUNTY	TOTAL SHEETS	SHEET NO.
F.A.P. 656	(1)	TAZEWELL	32	18
FED. ROAD DIST. NO. 4		ILLINOIS	FED. AID PROJECT	
CONTRACT NO. 68024				

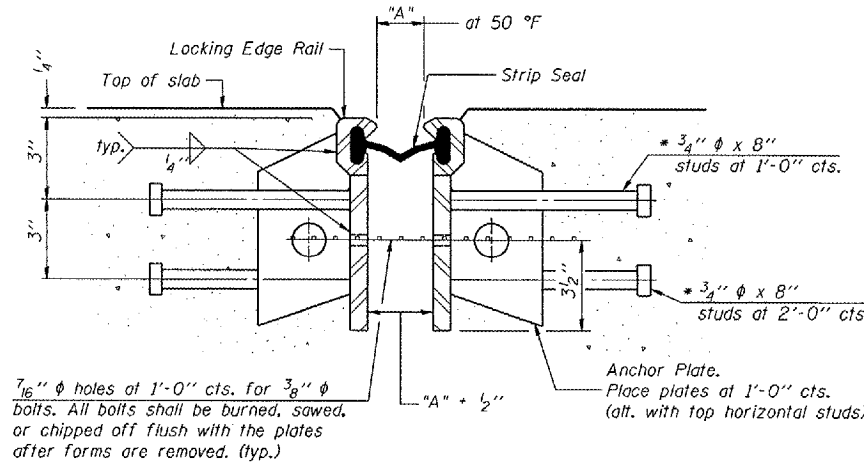
SHEET NO. 7  
OF 18 SHEETS



**SECTION THRU ROLLED RAIL EXP. JOINT**  
(212 Studs Required)

Required Strip Seal rated movement	Design Movement	Location
1"	1"	N. Abut.
2"	1 5/8"	S. Abut.

\* Granular or solid flux filled headed studs conforming to Article 1006.32 of the Std. Specs., automatically end welded.



**SECTION THRU WELDED RAIL EXP. JOINT**  
(128 Studs Required)  
(84 Anchor Plates Required)

**GENERAL NOTES**

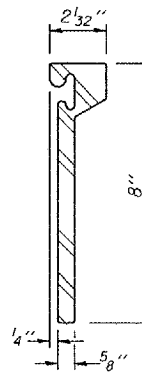
The strip seal shall be made continuous and shall have a minimum thickness of 1/4". The configuration of the strip seal shall match the configuration of the Locking Edge Rails.

The height and thickness of the Locking Edge Rails shown are minimum dimensions. The actual configuration of the Locking Edge Rails and matching strip seal may vary from manufacturer to manufacturer. Flanged edge rails will not be allowed.

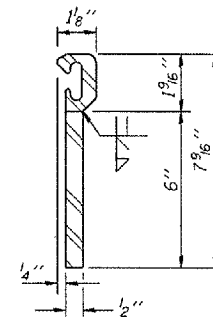
Locking Edge Rails may be spliced at slope discontinuities and stage construction joints.

The manufacturer's recommended installation methods shall be followed.

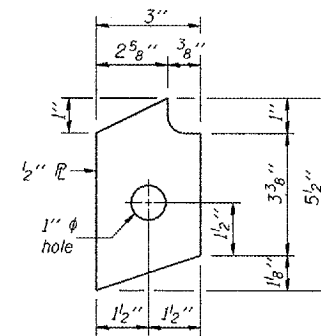
After fabrication is complete, all metal portions of the locking edge rail system shall be hot dipped galvanized in accordance with ASTM A385.



**ROLLED (EXTRUDED) RAIL**

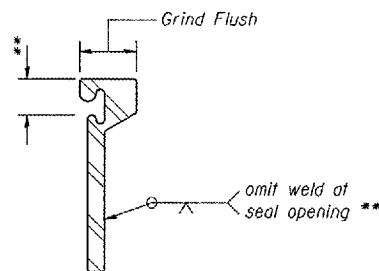


**WELDED RAIL**



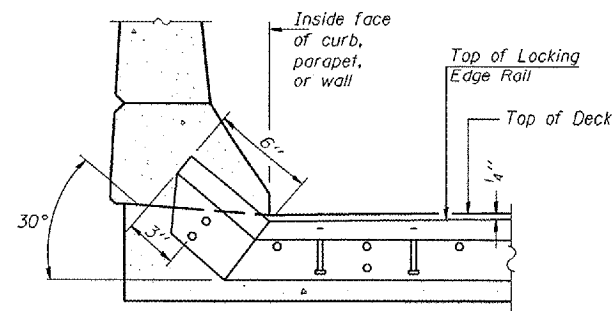
**ANCHOR PLATE**  
(for welded rail)

**LOCKING EDGE RAILS**

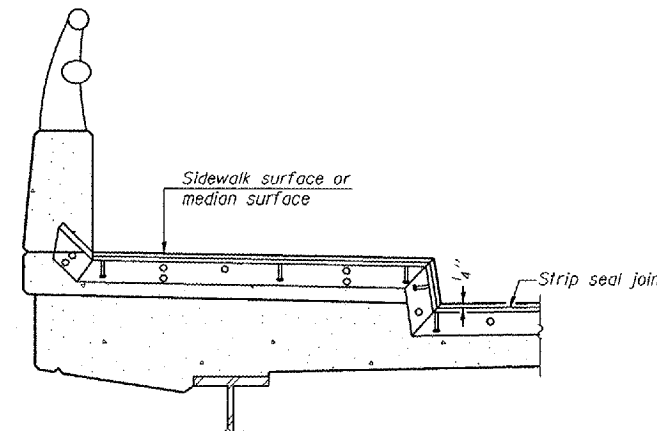


**LOCKING EDGE RAIL SPLICE**

The inside of the locking edge rail groove shall be free of weld residue.



**AT CURB, PARAPET, OR WALL**



**AT SIDEWALK OR MEDIAN\***

\* Shorter plates with a single row of studs at 12" centers may be necessary on medians which are shallower than 9". See manufacturer's recommendation.

**BILL OF MATERIAL**

Item	Unit	Total
Preformed Joint Strip Seal	Foot	80

Note: The contractor shall not have the option of using the Preformed Joint Seal on this project.

**BRIDGE JOINT SYSTEM - EXPANSION (STRIP SEAL)**  
IL. ROUTE 29 OVER CRANE CREEK  
F.A.P. ROUTE 656 - SECTION (1)  
TAZEWELL COUNTY  
STA. 166+53.50  
S.N. 090-0053

DESIGNED	- MAH
CHECKED	- APH
DRAWN	- JRP
CHECKED	- MAH