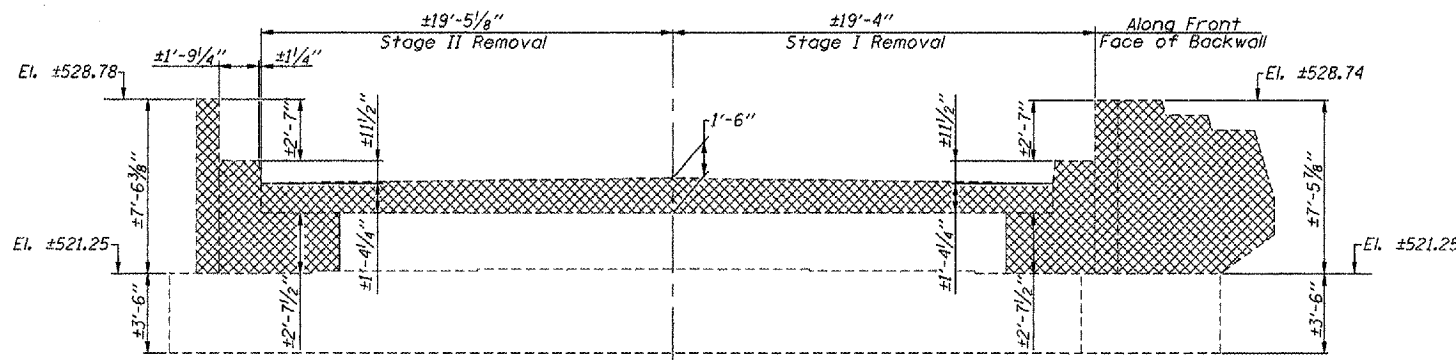


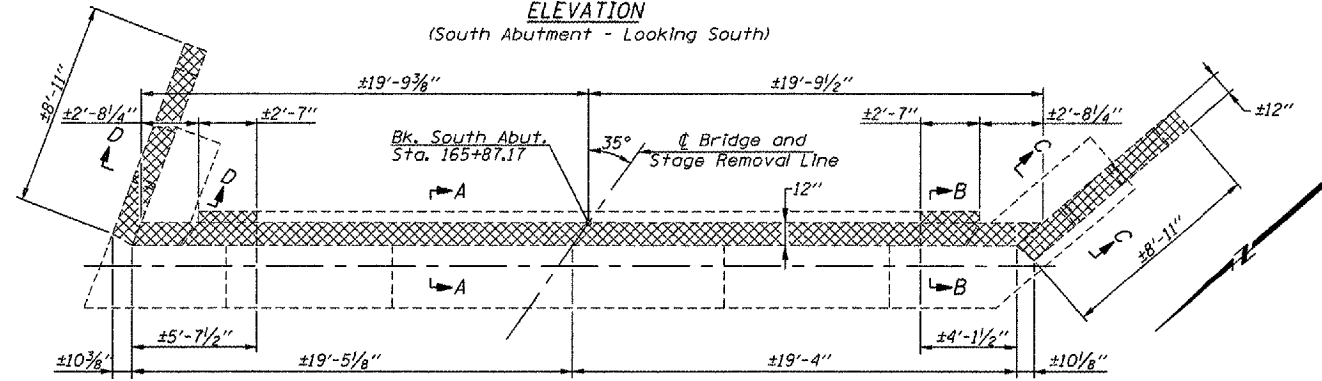
STATE OF ILLINOIS  
DEPARTMENT OF TRANSPORTATION

ROUTE NO.	SECTION	COUNTY	TOTAL SHEETS	SHEET NO.
F.A.P. 656	(1)	TAZEWELL	32	23
FED. ROAD DIST. NO. 4		ILLINOIS	FED. AID PROJECT	
CONTRACT NO. 68024				

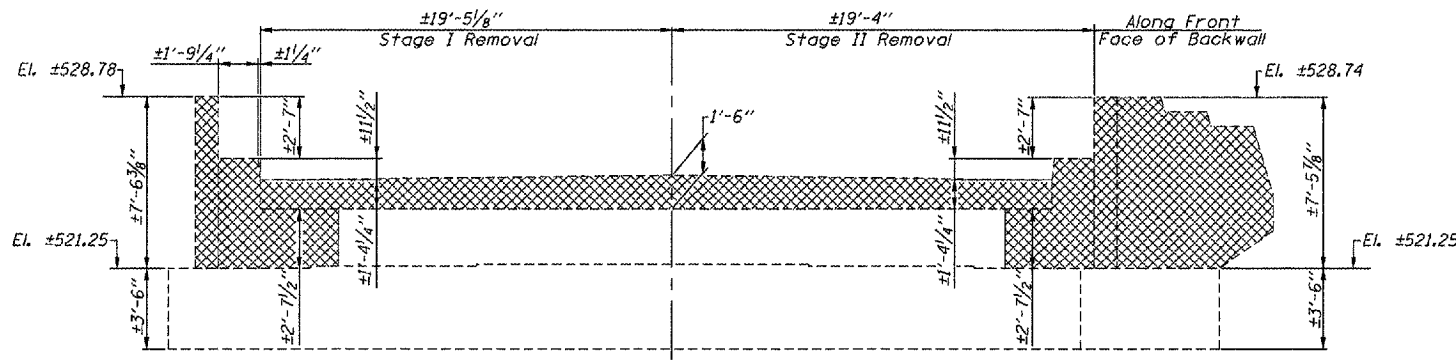
SHEET NO. 12  
OF 18 SHEETS



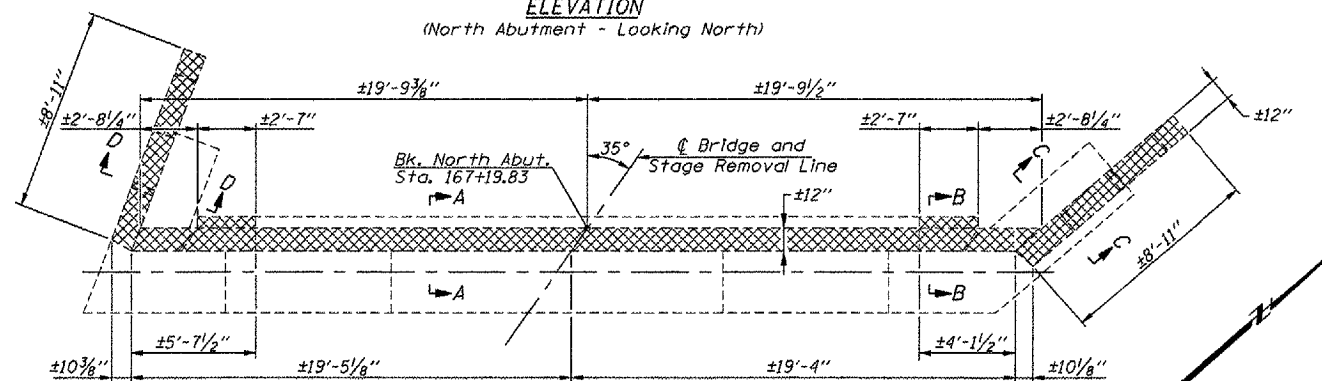
**ELEVATION**  
(South Abutment - Looking South)



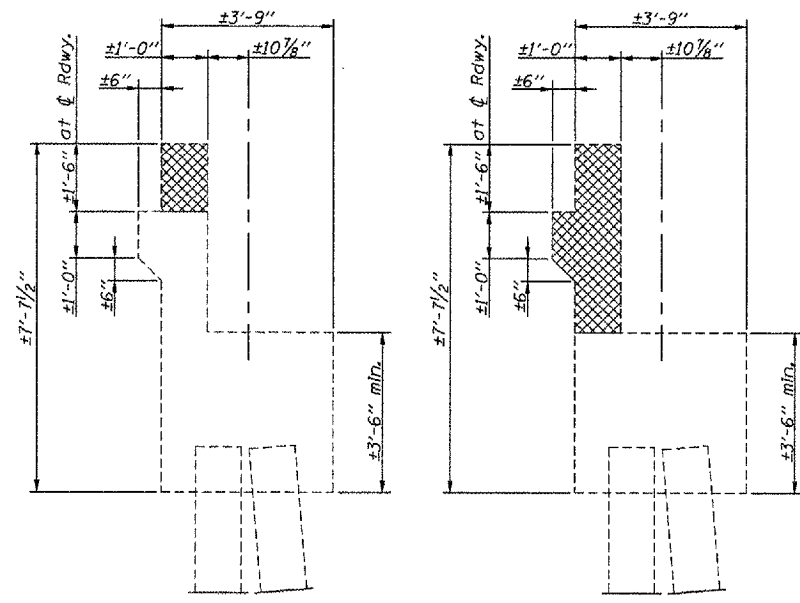
**PLAN**  
(South Abutment)



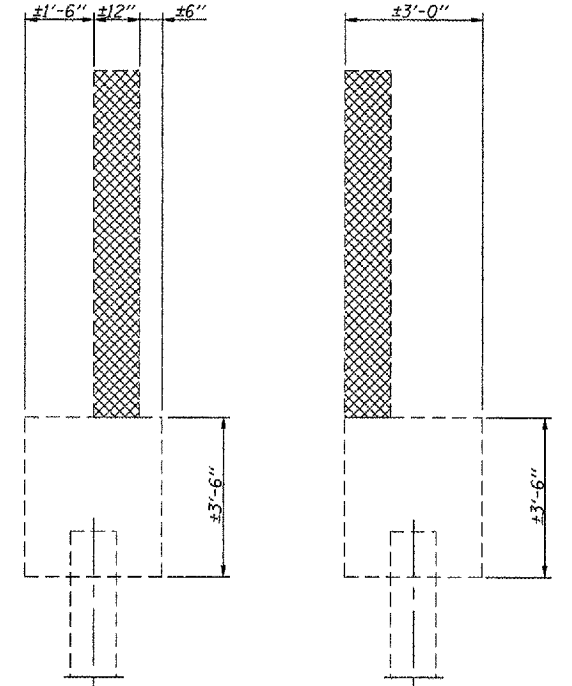
**ELEVATION**  
(North Abutment - Looking North)



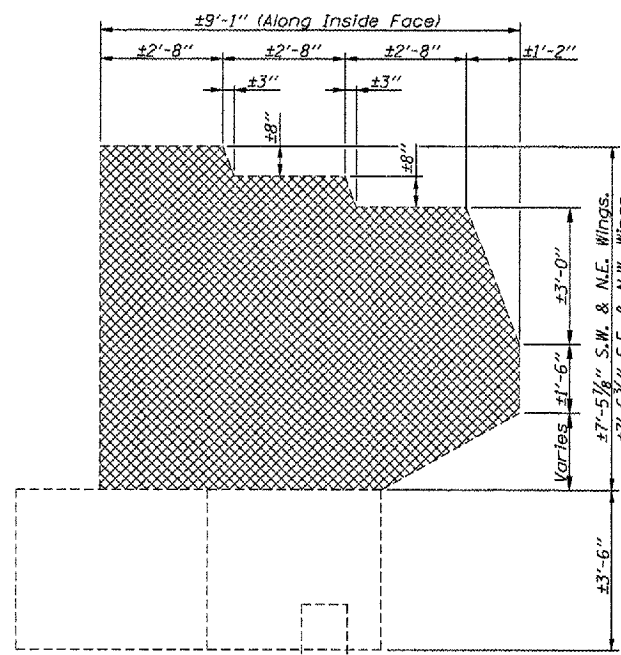
**PLAN**  
(North Abutment)



**SECTION A-A**      **SECTION B-B**



**SECTION C-C**      **SECTION D-D**



**WINGWALL ELEVATION**

**BILL OF MATERIAL**  
**TWO ABUTMENTS**

Item	Unit	Total
Concrete Removal	Cu. Yd.	13.8

Notes:  
Cross Hatched areas indicate "Concrete Removal".  
Existing reinforcement extending into new concrete shall be cleaned, straightened, and incorporated into new construction. Cost included with "Concrete Removal".

DESIGNED - MAH
CHECKED - APH
DRAWN - JRP
CHECKED - MAH

**ABUTMENT CONCRETE REMOVAL DETAILS**  
**IL. ROUTE 29 OVER CRANE CREEK**  
**F.A.P. ROUTE 656 - SECTION (1)**  
**TAZEWELL COUNTY**  
**STA. 166+53.50**  
**S.N. 090-0053**