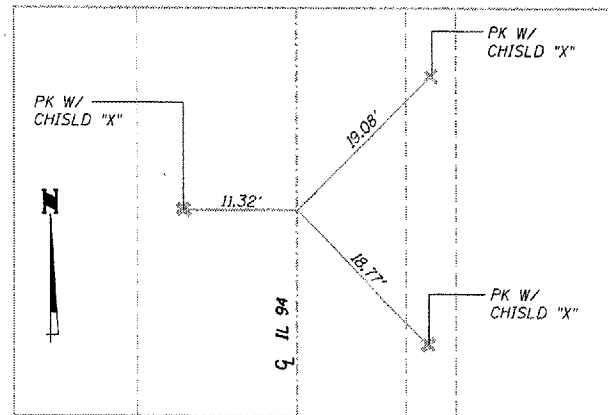
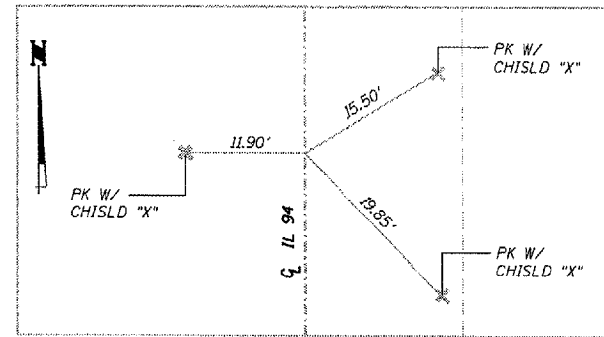


| FA<br>SHE.            | SECTION   | COUNTY         | TOTAL<br>SHEETS  | SHEET<br>NO. |
|-----------------------|-----------|----------------|------------------|--------------|
| 220                   | (23-BR) I | Mercer         | 50               | 9            |
| STA. 99+71            |           | TO STA. 109+76 |                  |              |
| FED. ROAD DIST. NO. 7 |           | ILLINOIS       | FED. AID PROJECT |              |

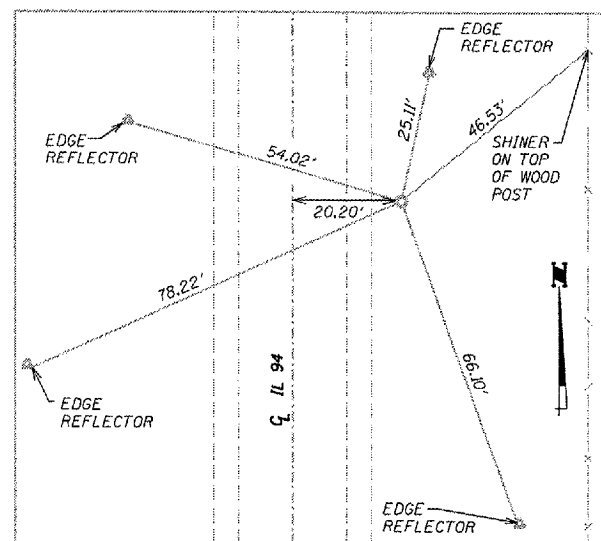
TIE POINTS IL 94



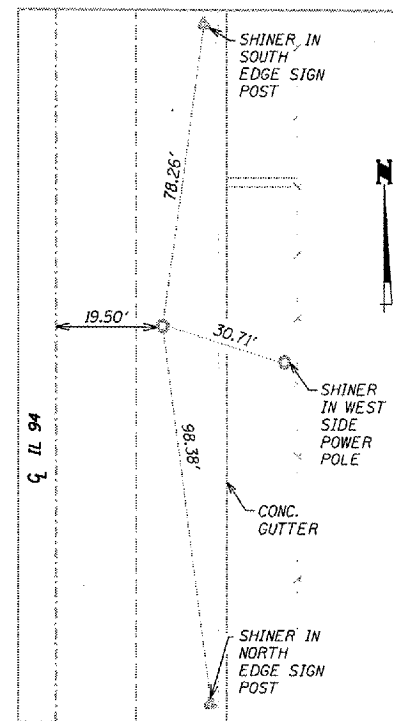
POT STA. 99+00  
PK NAIL



POT STA. 110+00  
PK NAIL



TRANSVERSE TIE STA. 109+65.5 (±)  
RT. 20.20'  
1/2" IRON PIN



TRANSVERSE TIE STA. 121+95 (±)  
RT. 19.50'  
1/2" IRON PIN

BENCHMARKS IL 94

BM - CHISEL "□" S.E. CORNER OF  
BRIDGE ON ABUTMENT WALL  
ELEV. = 626.35