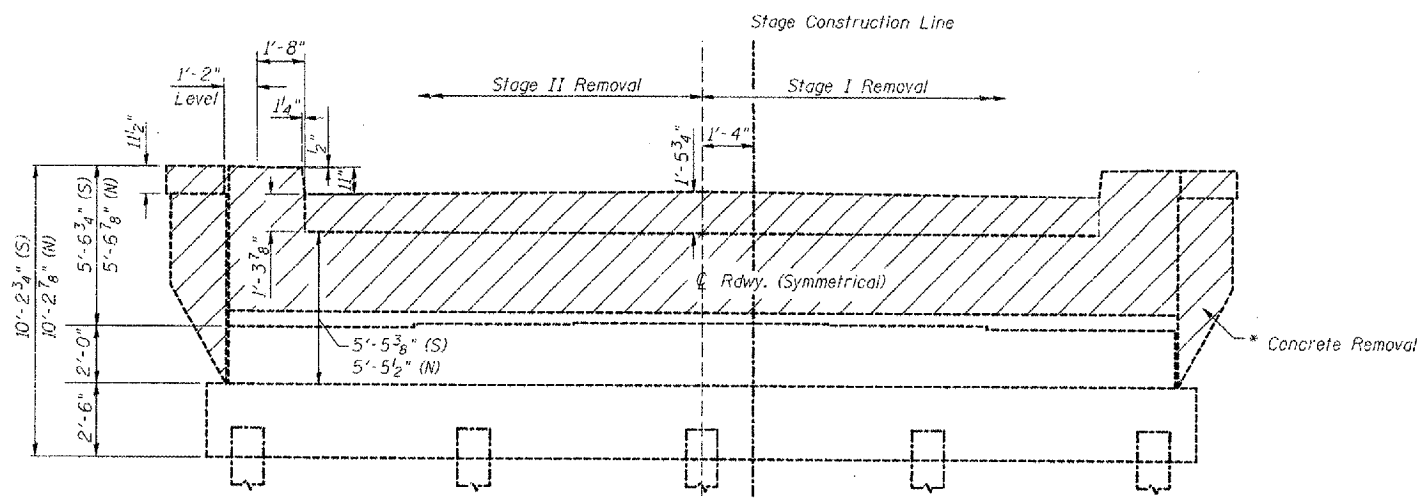


STATE OF ILLINOIS
DEPARTMENT OF TRANSPORTATION

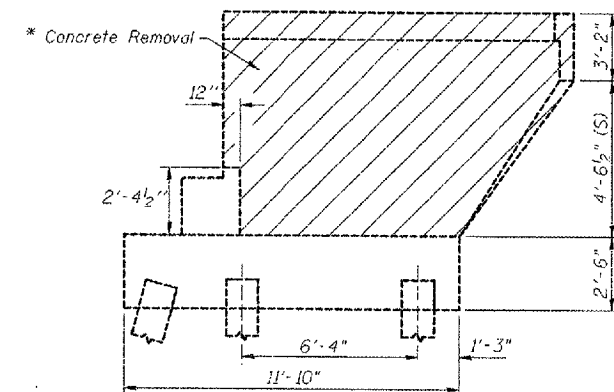
ROUTE NO.	SECTION	COUNTY	SHEET NO.	SHEET	SHEET NO.
220	*	Mercer	50	29	17
FED. ROAD DIST. NO. 7	ILLINOIS	FED. PROJ. NO.	SHEETS 23		

*(23-BR) I

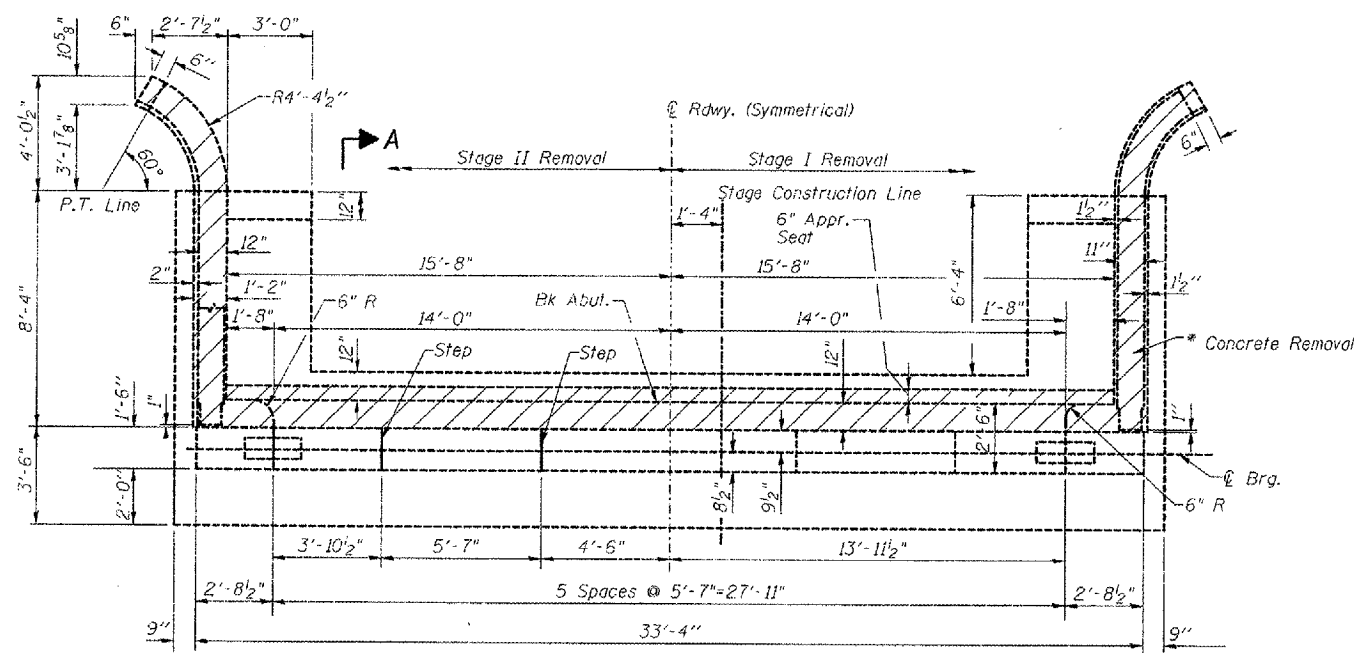


ELEVATION

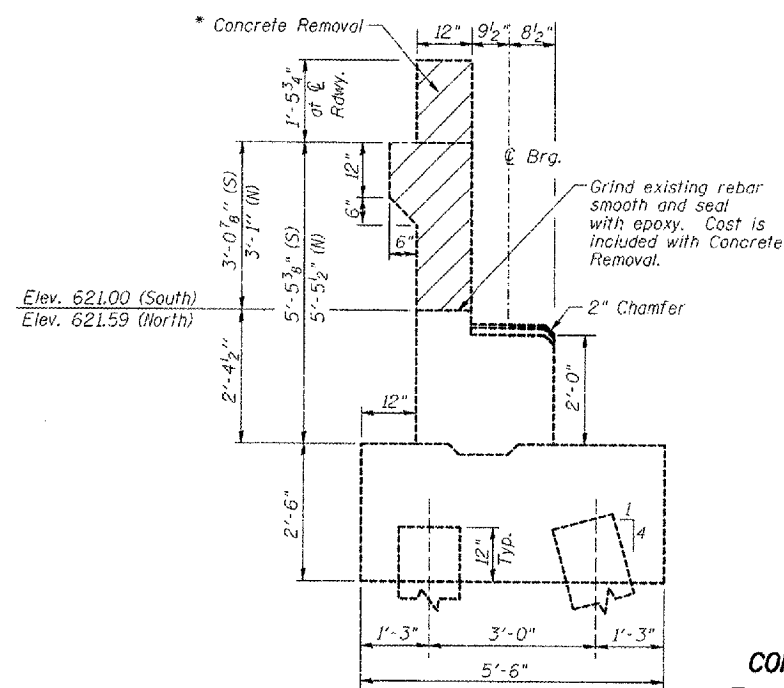
At Right Angles to \bar{C} Rdwy.
Note:
(S) - Indicates South Abutment.
(N) - Indicates North Abutment.



SIDE ELEVATION



PLAN OF ABUTMENT



SECTION A

BILL OF MATERIAL

Item	Unit	N. Abut.	S. Abut.	Total
Concrete Removal	Cu. Yds	12.6	12.6	25.2

* Hatched area indicates concrete removal. Any existing reinforcement that extends into new work, except as shown in section A, shall be cleaned, straightened and incorporated into new construction.

CONCRETE REMOVAL DETAILS
F.A.S. ROUTE 220 (IL ROUTE 94)
OVER EDWARDS RIVER
SECTION (23-BR) I
MERCER COUNTY
STRUCTURE NO. 066-0008
STATION 104+73.75

DESIGNED	K.E. Brandau
CHECKED	R. T. Mumm
DRAWN	L.A. Rolf
CHECKED	K.E. Brandau