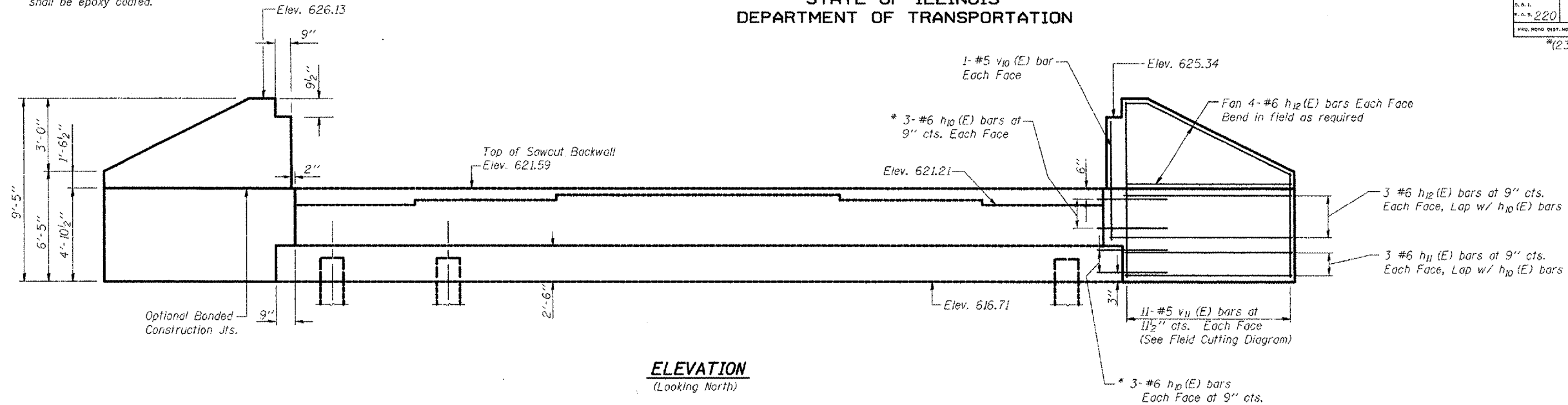


Notes: Reinforcement bars designated (E) shall be epoxy coated.

STATE OF ILLINOIS
DEPARTMENT OF TRANSPORTATION

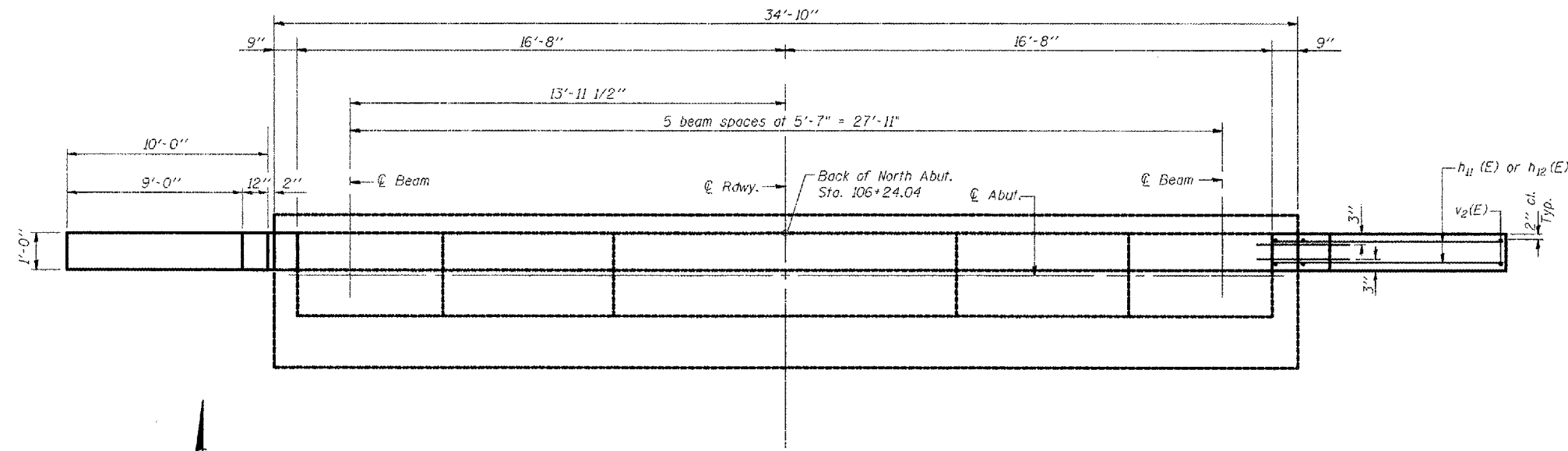
ROUTE NO.	SECTION	COUNTY	TOTAL SHEETS	SHEET NO.	SHEET NO.
220	*	Mercer	50	30	23
FED. ROAD DIST. NO. 7		ALLIANCE	FED. AID PROJECT		

*(23-BR) I

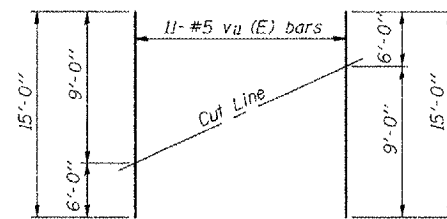


ELEVATION
(Looking North)

* Epoxy grout in 1"φ x 9" (min) drilled holes according to I.D.O.T. Standard Spec. Section 584. Cost is included with Reinforcement Bars Epoxy Coated



PLAN



FIELD CUTTING DIAGRAM

Order v11 (E) full length. Cut as shown and use remainder of bars in opposite face.

BILL OF MATERIAL

Bar	No.	Size	Length	Shape
h10 (E)	24	#6	3'-9"	—
h11 (E)	12	#6	9'-8"	—
h12 (E)	28	#6	10'-5"	—
v10 (E)	4	#5	5'-0"	—
v11 (E)	22	#5	15'-0"	—
Concrete Structures			Cu. Yd.	6.4
Reinforcement Bars, Epoxy Coated			Pound	1110
Structure Excavation			Cu. Yd.	206

NORTH ABUTMENT
F.A.S. ROUTE 220 (IL ROUTE 94)
OVER EDWARDS RIVER
SECTION (23-BR) I
MERCER COUNTY
STRUCTURE NO. 066-0008
STATION 104+73.75

DESIGNED	K.E. Brandau
CHECKED	R.T. Mumm
DRAWN	L.A. Roif
CHECKED	K.E. Brandau

AI-0 4-30-99

FRAUENHOFFER & ASSOCIATES, P.C.