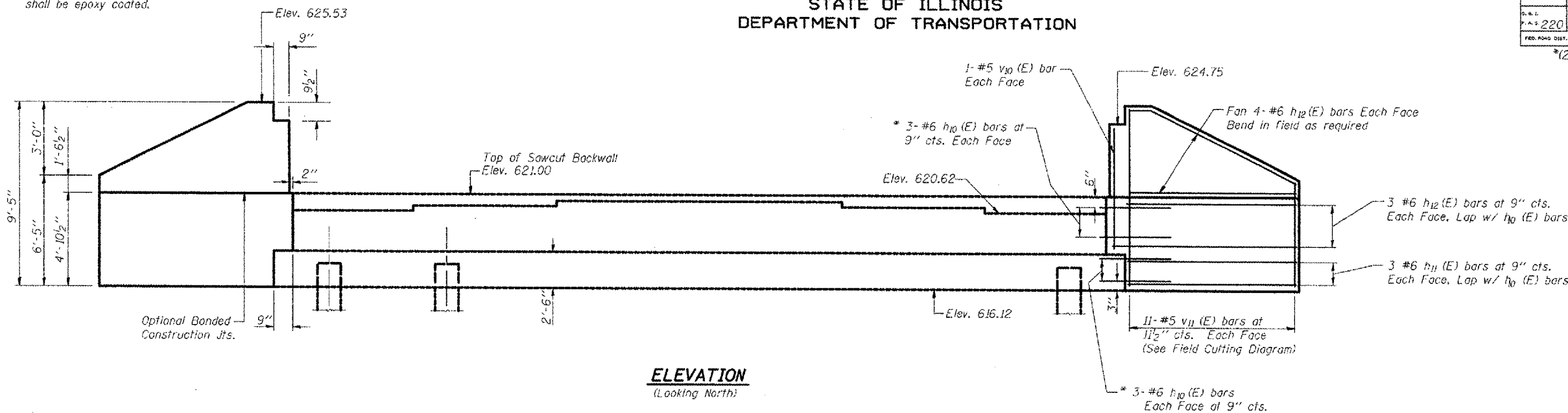


ROUTE NO.	SECTION	COUNTY	TOTAL SHEETS	SHEET NO.
220	*	Mercer	50	31
F.A.S. 220		SHEETS 23		
FED. ROAD DIST. NO. 7		ILLINOIS FED. AID PROJECT		

\*(23-BR) I

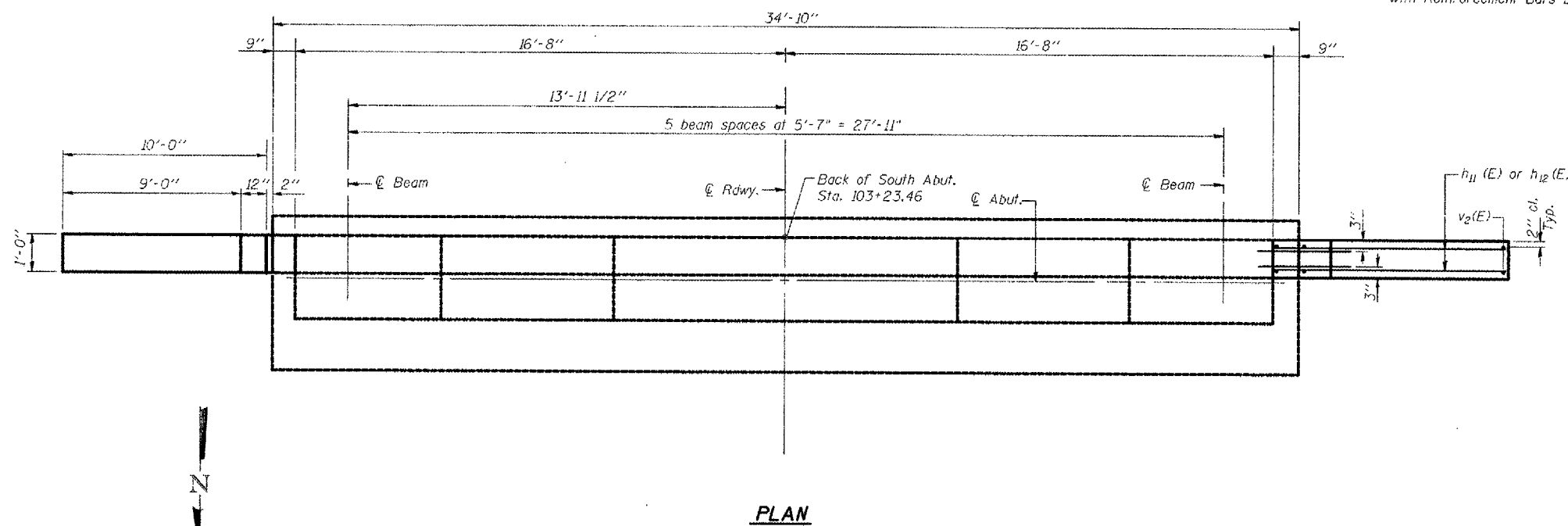
Notes: Reinforcement bars designated (E) shall be epoxy coated.

STATE OF ILLINOIS  
DEPARTMENT OF TRANSPORTATION

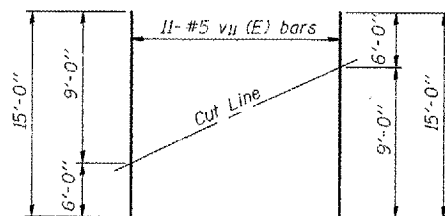


**ELEVATION**  
(Looking North)

\* Epoxy grout in 1"φ x 9" (min) drilled holes according to I.D.O.T. Standard Spec. Section 584. Cost is included with Reinforcement Bars Epoxy Coated



**PLAN**



**FIELD CUTTING DIAGRAM**

Order v11 (E) full length. Cut as shown and use remainder of bars in opposite face.

**BILL OF MATERIAL**

Bar	No.	Size	Length	Shape
h10 (E)	24	#6	3'-9"	—
h11 (E)	12	#6	9'-8"	—
h12 (E)	28	#6	10'-5"	—
v10 (E)	4	#5	5'-0"	—
v11 (E)	22	#5	15'-0"	—
Concrete Structures		Cu. Yd.	6.4	
Reinforcement Bars, Epoxy Coated		Pound	1110	
Structure Excavation		Cu. Yd.	206	

**SOUTH ABUTMENT**  
F.A.S. ROUTE 220 (IL ROUTE 94)  
OVER EDWARDS RIVER  
SECTION (23-BR) I  
MERCER COUNTY  
STRUCTURE NO. 066-0008  
STATION 104+73.75

DESIGNED	K.E. Brandau
CHECKED	R.T. Mumm
DRAWN	L.A. Rolf
CHECKED	K.E. Brandau
AI-0	4-30-99

**FRAUENHOFFER & ASSOCIATES, P.C.**