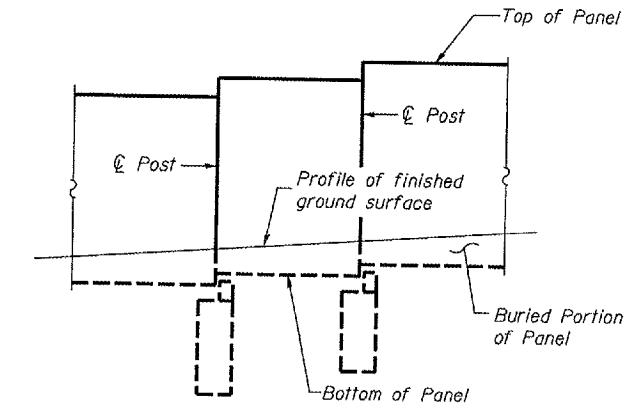
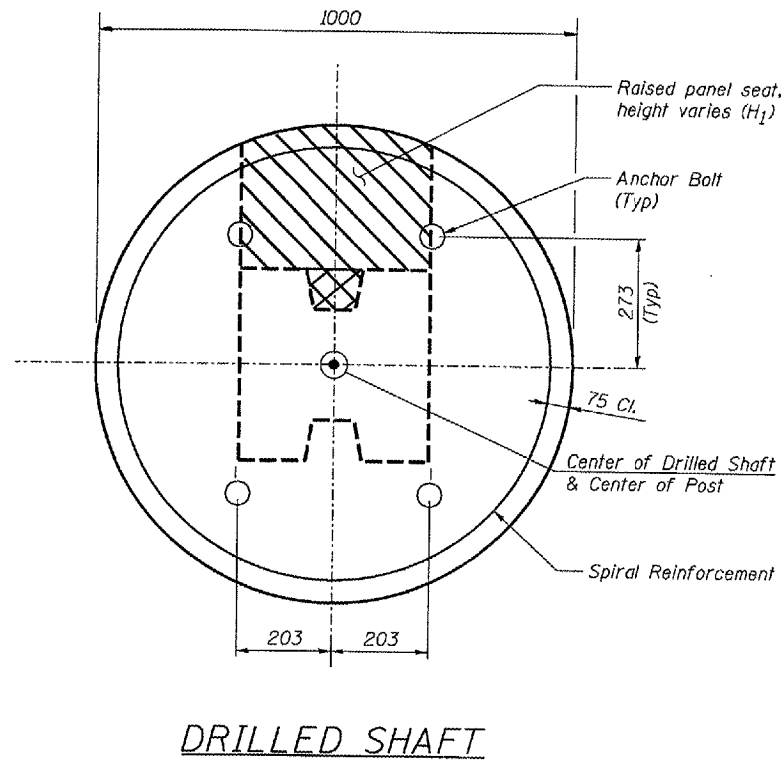
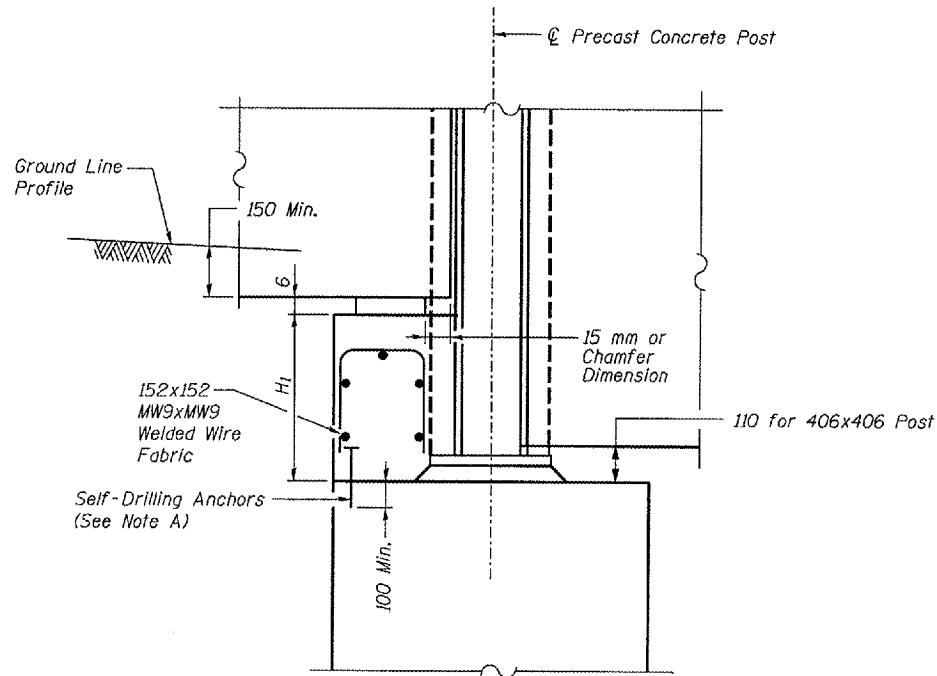
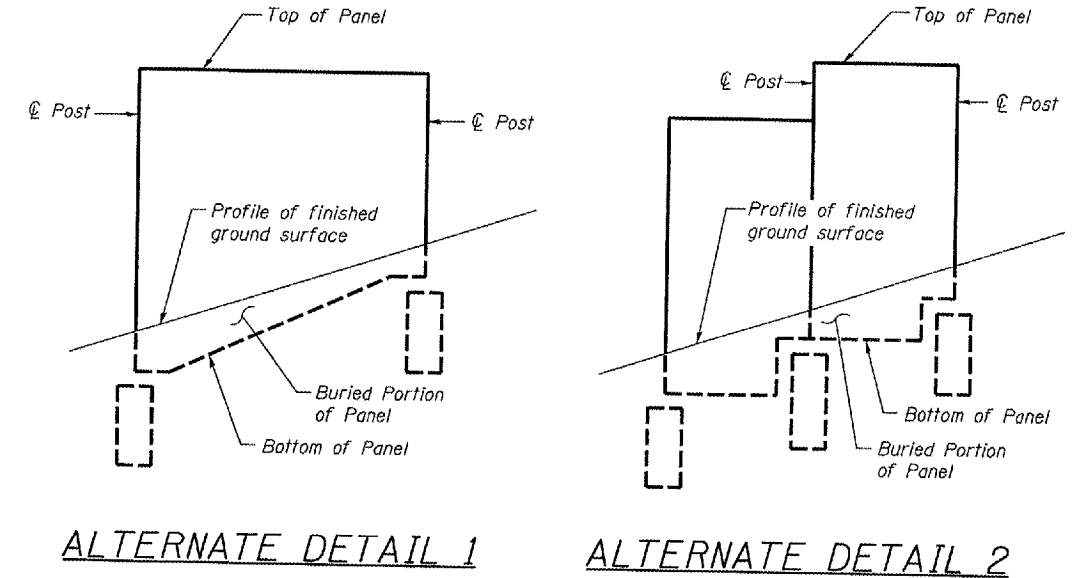


**FABRIC BEARING PADS**  
(Cost included in Noise Abatement Wall Ground Mounted (Precast Concrete))  
(Clip the pad area projecting beyond the base plate area in the field. Cross-hatched area in drilled shaft detail represents the bearing pad shape.)



**METHOD OF MEASUREMENT OF WALL AREA FOR GROUND MOUNTED WALL**

The Method of Measurement of quantity of Noise Abatement Wall is based on the cumulative area of Panels in Elevation View bounded by the Posts, Top of Panel & Bottom of Panel. Alternates 1 and 2 apply to the contract options. See Special Provisions.

**\*RAISED PANEL SEAT ELEVATION**

Note A: Use 13 mm  $\phi$  x  $H_1$  self drilling anchors, Welded Wire Fabric and concrete structures to raise the panel seat. Cost of materials in the raised panel seat is included in Noise Abatement Wall Ground Mounted (Precast Concrete).

\* The Contractor has the option to use a level seat for adjacent panels by sloping or stepping the panel bottom as long as the minimum embedment of panel below the groundline profile is maintained. See Special Provisions.

**NOTES:**

- All Reinforcement including the Welded Wire Fabric shall be Epoxy Coated.
- Work this sheet with sheets 18 and 20.

**benesch**

alfred benesch & company  
Engineers - Surveyors - Planners  
205 North Michigan Avenue, Suite 2400  
Chicago, Illinois 60601  
312.665-0450  
JOB NO. 3573

REVISIONS	
NAME	DATE

ILLINOIS DEPARTMENT OF TRANSPORTATION  
**POST DETAILS 2**  
NOISE ABATEMENT WALL  
F.A.I. RTE. 74 (I-74)  
SECTION D4 I-74 NOISE WALL 2008  
PEORIA COUNTY  
STA. 142+916.64 TO STA. 143+287.69  
STRUCTURE NUMBER 072-8554