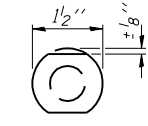
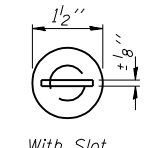
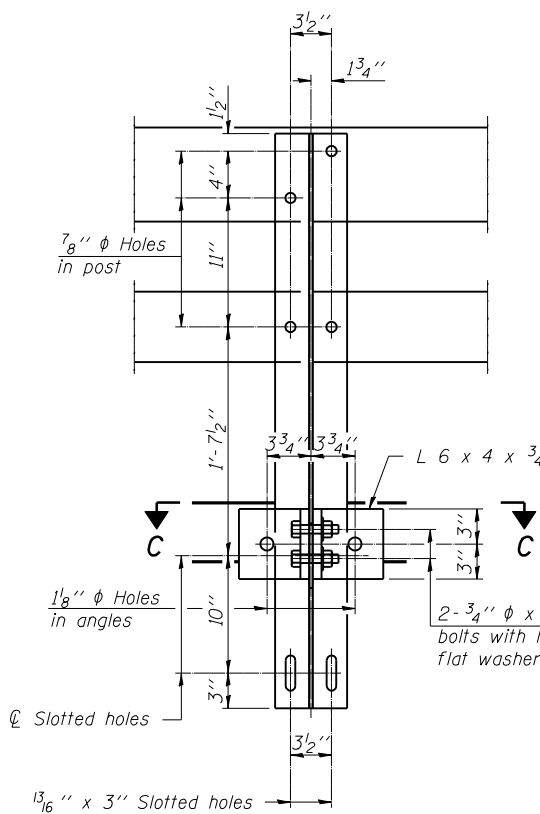


DETAIL OF 3/4" ϕ ROUND HEAD BOLT



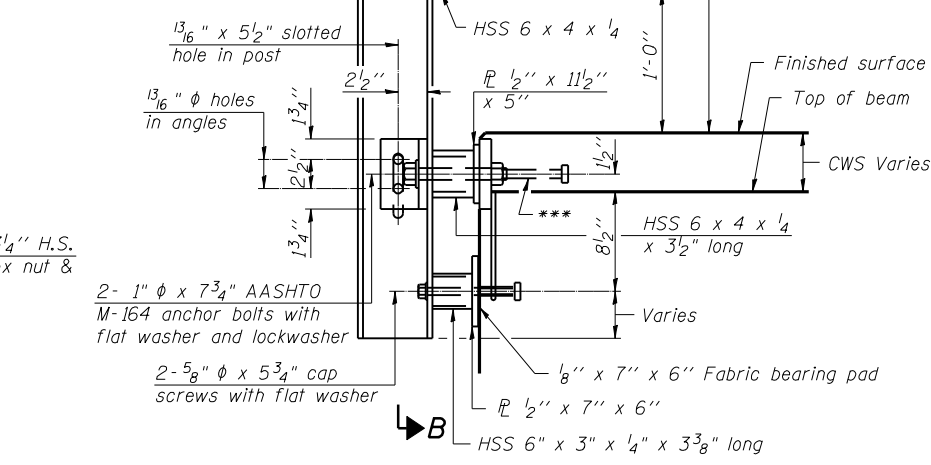
VIEW A-A

FOR RAIL POST SPACING SEE SH.#8 OF 10

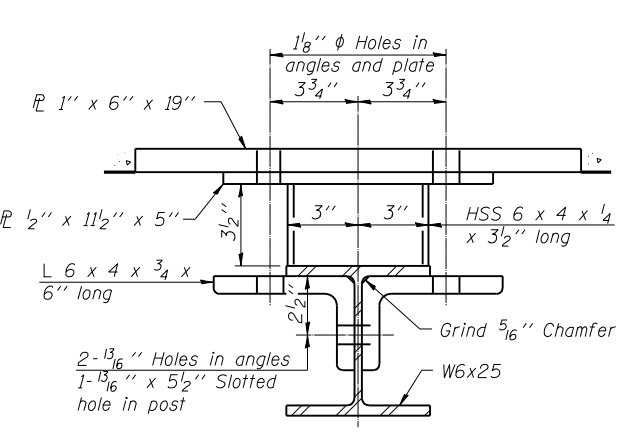


SECTION B-B

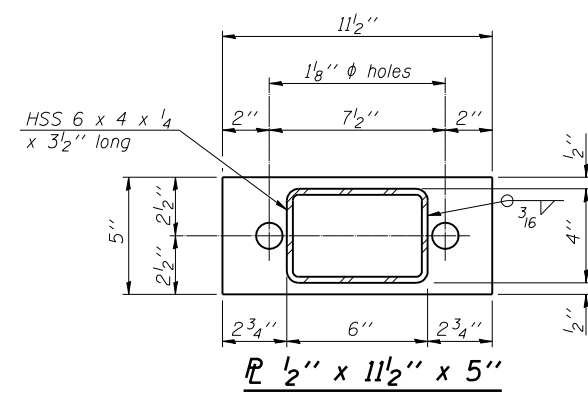
4-3/4" ϕ x 6" Round Head Bolts (With slot or approved recess in head) with locknut & flat washer. 7/8" ϕ holes in hollow structural section may be drilled in the field.



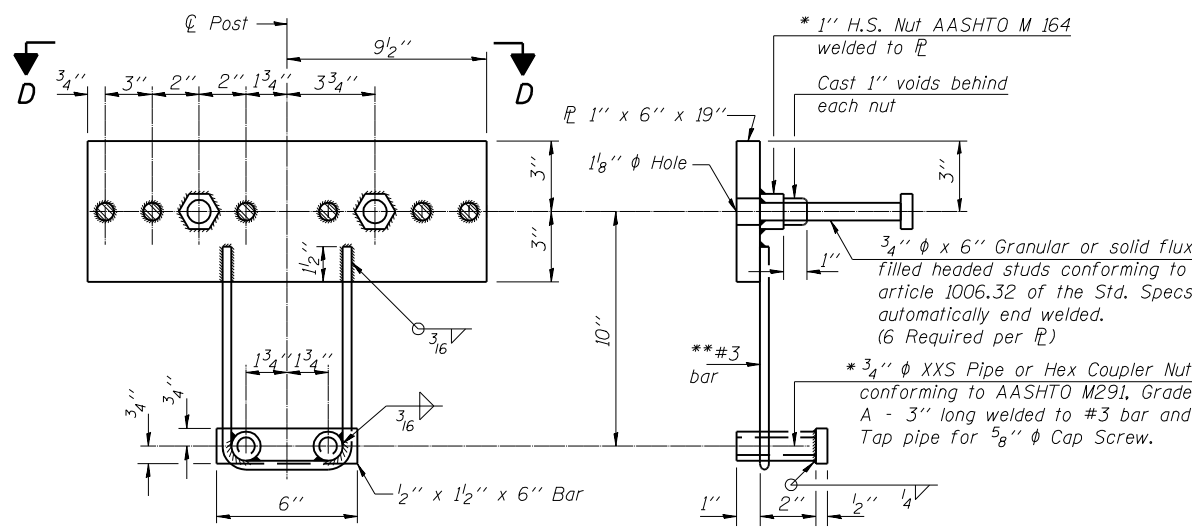
SECTION AT RAIL POST



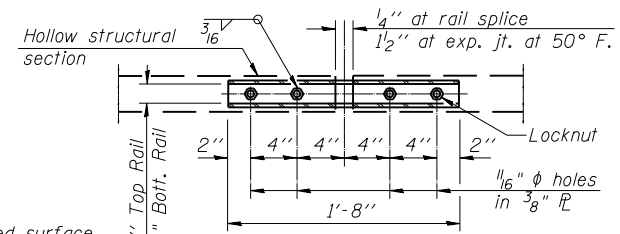
SECTION C-C



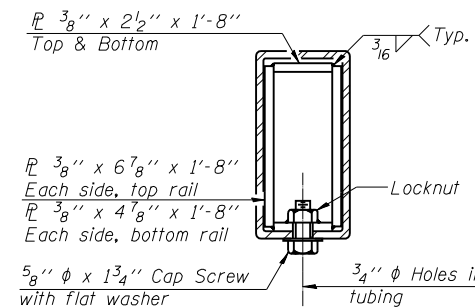
ANCHOR DEVICE



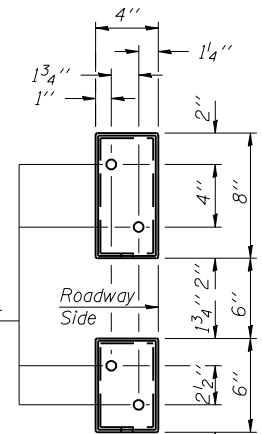
VIEW D-D



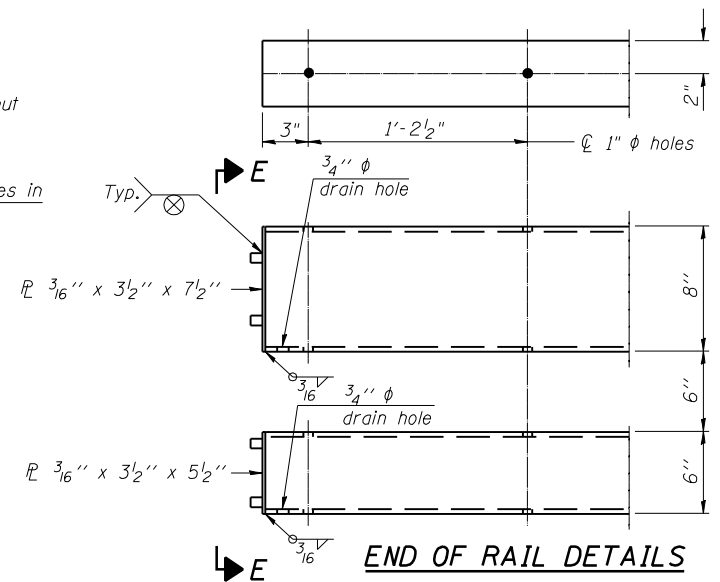
PLAN-BOTT. SPLICE P TYPICAL



SECTION AT RAIL SPLICE



VIEW E-E



END OF RAIL DETAILS

Notes:
All field drilled holes shall be coated with an approved zinc rich paint before erection.
For multi-span bridges, sufficient 1/4" x 6" x 1'-2" galvanized steel shims shall be provided to align rail between adjacent spans. Cost included with Steel Railing, Type SM.
Steel rail elements shall be galvanized according to Article 509.05 of the Standard Specifications.
*** The studs of the anchor devices shall be placed below the top reinforcement bars and the outermost longitudinal reinforcement bar shall be placed directly above the studs of the rail post anchor device.

BILL OF MATERIAL

Item	Unit	Quantity
Steel Railing, Type SM	Foot	134

**STEEL RAILING, TYPE SM
WITH CONCRETE WEARING SURFACE
ILLINOIS ROUTE 96 OVER
HOMAN CREEK
F.A.U. RT. 7825 SEC. (K-15D)BR
ADAMS COUNTY
STATION 132+83.00
STR. NO. 001-0031**

HUTCHISON ENGINEERING, INC.
JACKSONVILLE, ILLINOIS
Rev: _____ Date: _____

DESIGNED	BAN
CHECKED	JOH
DRAWN	TC
CHECKED	BAN

R-34CWS

11-1-06 (6'-3" Maximum Post Spacing) (5" minimum to 7/8" maximum CWS thickness)

* Threaded areas shall be plugged or blocked off during casting of beam. Galvanized after fabrication.
** Whenever the lower insert assemblies interfere with strand locations, the #3 bars shall be cut and adjusted in order to allow raising or lowering of the lower inserts. Maximum adjustment not to exceed 1/2".