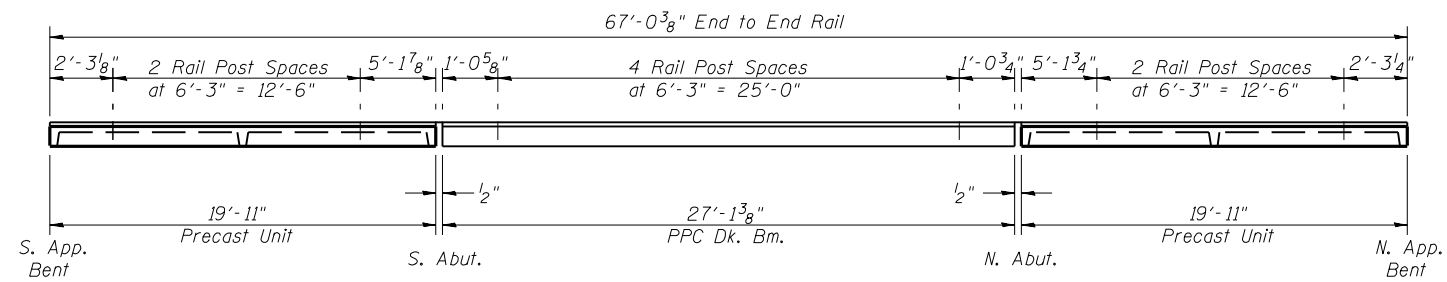
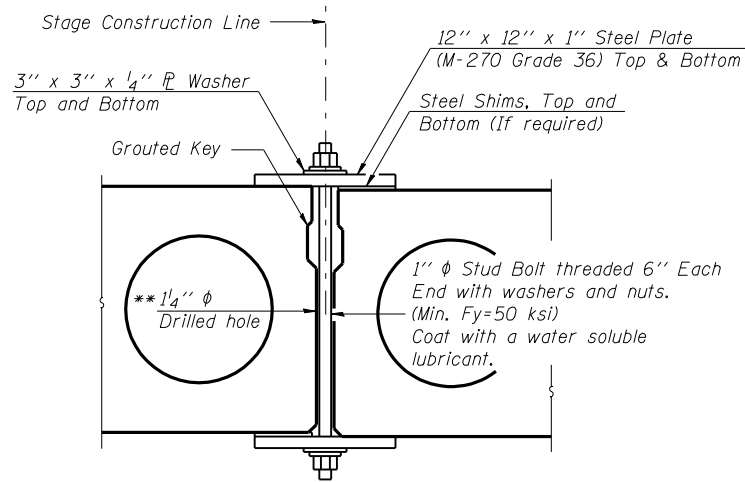


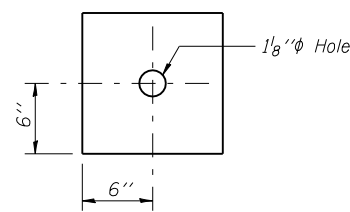
PLAN



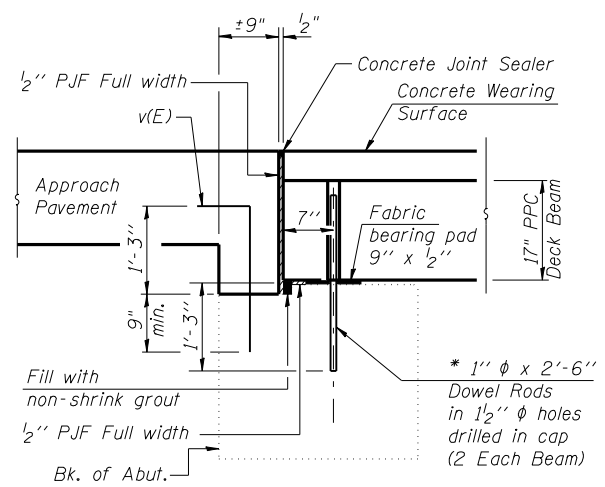
RAIL POST SPACING



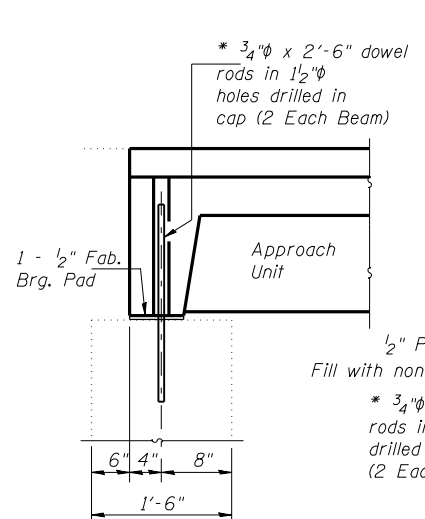
SECTION



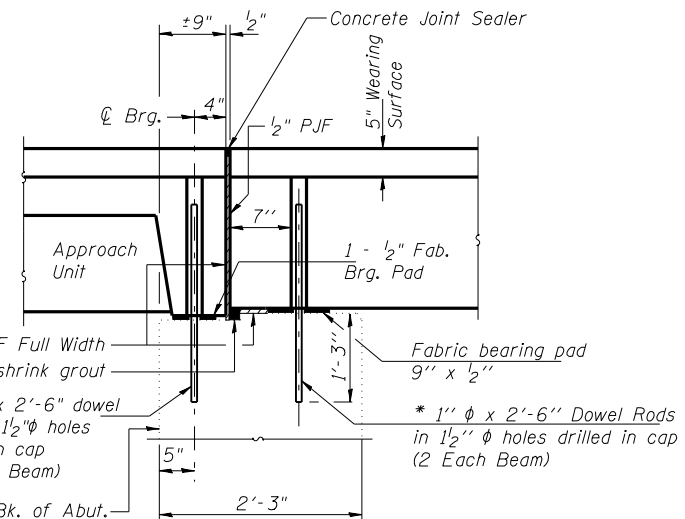
CLAMPING PLATE



SECTION THRU ABUTMENT AT ROADWAY



BENT



ABUTMENT

TYPICAL SECTION AT OUTSIDE FACE OF APPROACH BEAM

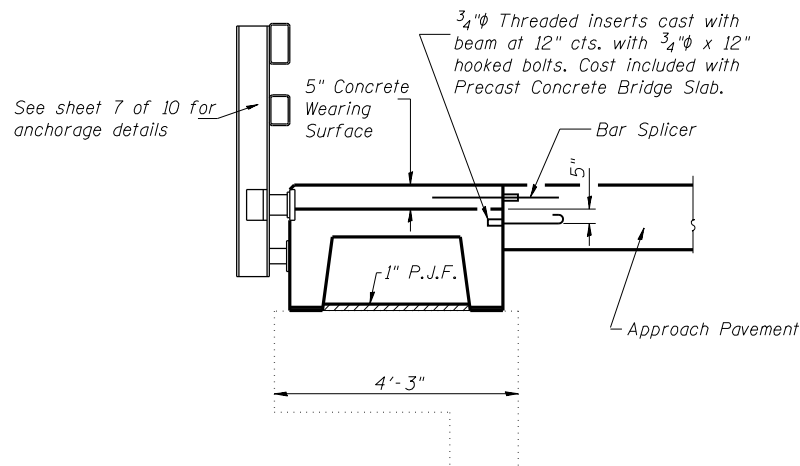
* Existing Dowel Rods shall be burned off flush with the top of existing concrete, ground smooth, and sealed with epoxy. Cost to be included in the cost of Removal of Existing Superstructures/Removal of Existing Precast Concrete Units. After beams have been erected, holes shall be drilled into substructure and anchor dowels placed. Dowel holes shall be filled with non-shrink grout to top of beam and allowed to cure min. 24 hrs. prior to grouting the shear keys.

SHEAR KEY CLAMPING DETAILS AT STAGE CONST. JT.

Cost included with Precast Prestressed Concrete Deck Beams.
See Stage Construction Details for traffic lanes.

** As an alternate to the drilled holes, the Contractor may request the Fabricator to cast 2'' diameter semi-circular recesses in the sides of each beam adjacent to the stage construction line. These recesses should align to form a hole at the appropriate locations for the clamping device bolts. If the Contractor elects to use this alternate, the details shall be identified on the shop drawings.

DESIGNED	BAN
CHECKED	JOH
DRAWN	TC
CHECKED	BAN



TYPICAL APPROACH SECTION NEAR BENT

Notes :
All horizontal dimensions are at right angles to beam ends.
See sheet 4 & 5 of 10 for bearing pad details.

SUPERSTRUCTURE DETAILS
ILLINOIS ROUTE 96 OVER
HOMAN CREEK
F.A.U. RT. 7825 SEC. (K-15D)BR
ADAMS COUNTY
STATION 132+83.00
STR. NO. 001-0031

HUTCHISON ENGINEERING, INC.
JACKSONVILLE, ILLINOIS
Rev: _____ Date: _____