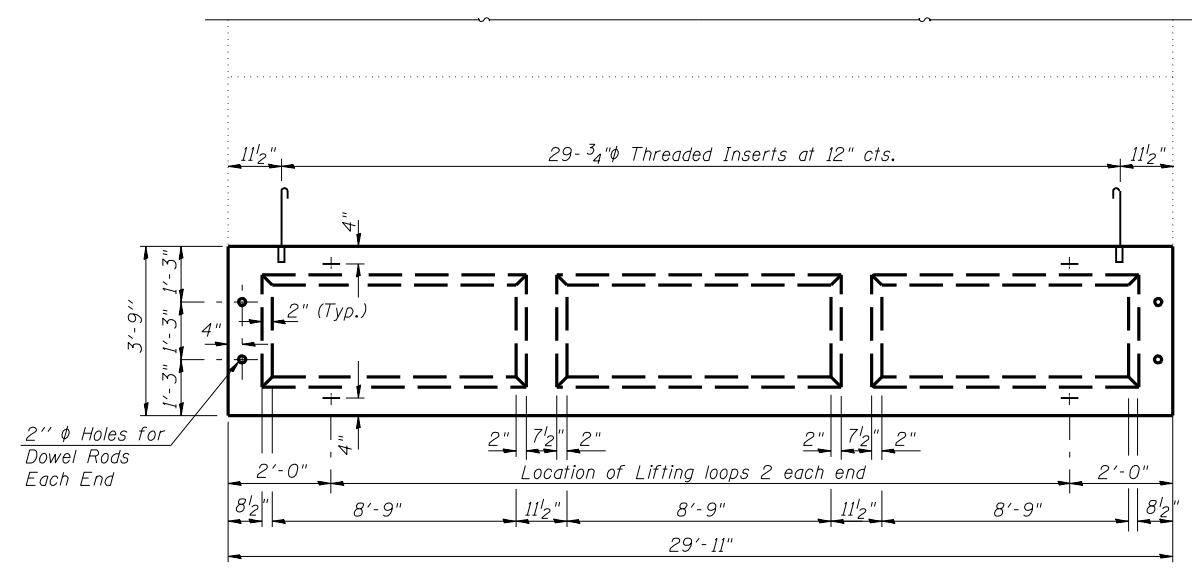
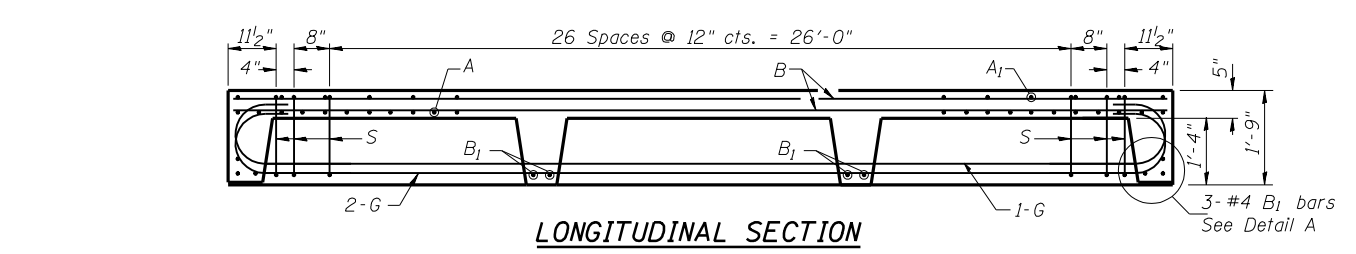


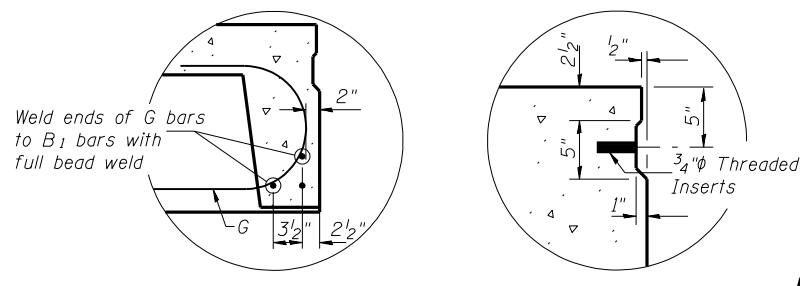
Note:
Tack welding of stirrups to bottom longitudinal reinforcement bars will not be permitted except as otherwise authorized in writing by the Engineer.



TYPICAL PLAN OF BEAM



LONGITUDINAL SECTION

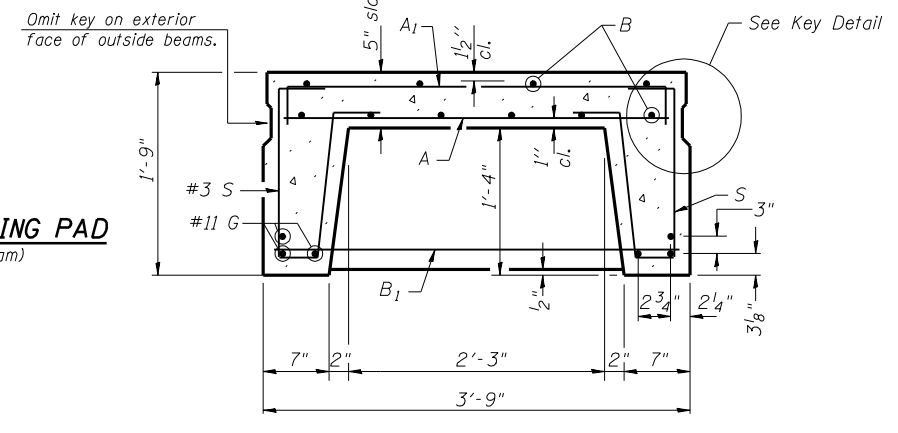


DETAIL A KEY DETAIL

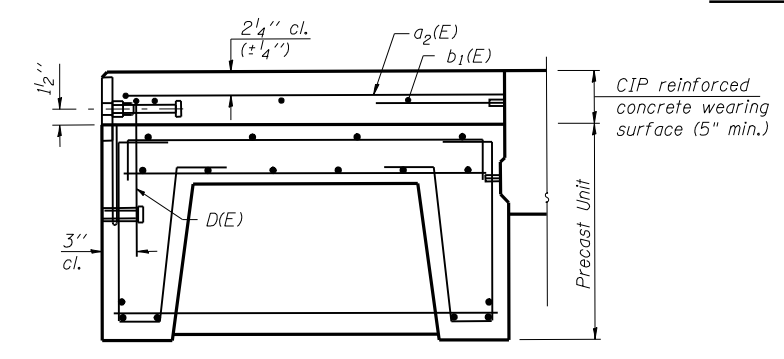
The surface of the member shall not deviate more than 1/1200 of the full length of the member from a straight line connecting the two end points on the member's surface. In addition to State inspection and prior to erection, the beam shall be approved by the resident Engineer at the jobsite. The units shall remain on the bottom supporting forms until the concrete has attained a compressive strength of not less than 3,500 pounds per square inch.

Precast concrete bridge slab shall meet the requirements of Section 504 of the Standard Specifications and shall be paid for at the contract unit price per square foot for Precast Concrete Bridge Slab.

1/2" FABRIC BEARING PAD
(4 Req'd. per beam)



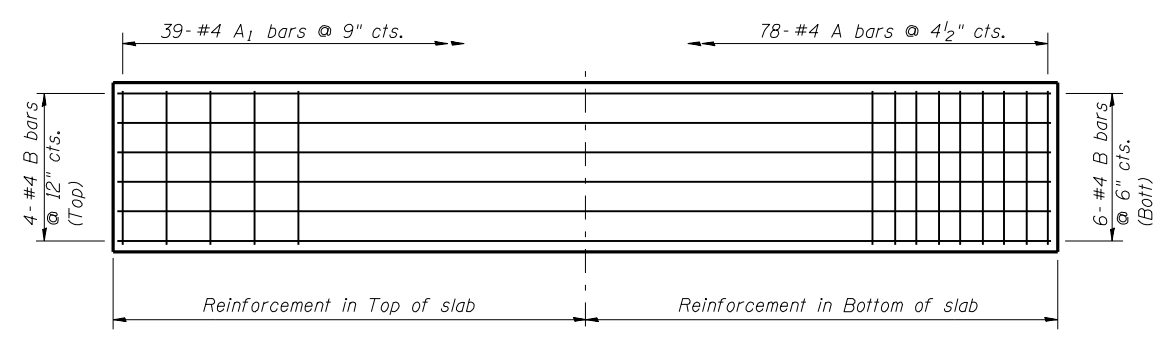
SECTION THRU PRECAST UNIT



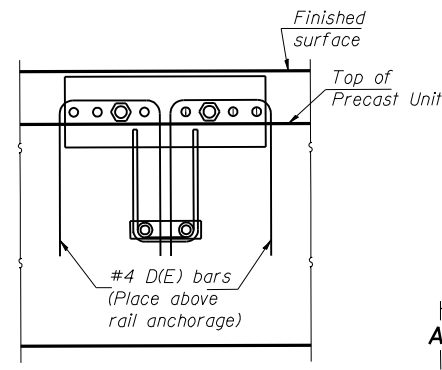
FASCIA BEAM

BILL OF MATERIAL

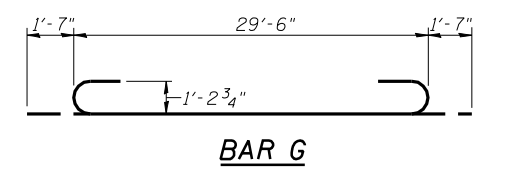
Item	Unit	Quantity
Precast Concrete Bridge Slab	Sq. Ft.	449
Removal of Existing Precast Unit	Sq. Ft.	449



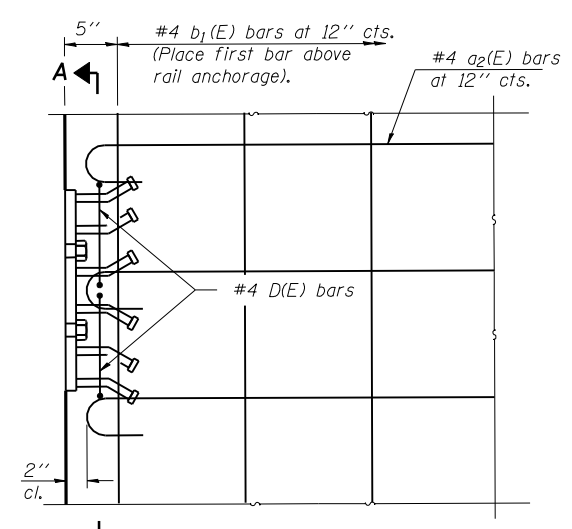
PLAN
Showing Slab Reinforcement



SECTION A-A

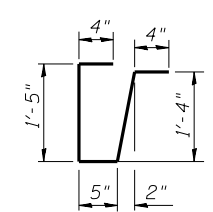


BAR G

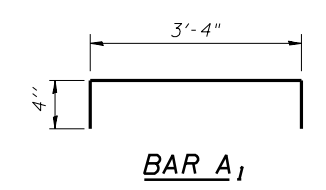


PLAN AT RAIL ANCHOR

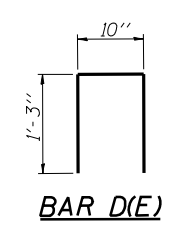
Rail anchorage shall be cast in precast units. See section for dimensions and bar callouts not shown. Formwork necessary for the wearing surface may be secured utilizing the bottom rail anchorage inserts and/or additional inserts cast into the beam. Drilling into the precast unit will not be permitted.



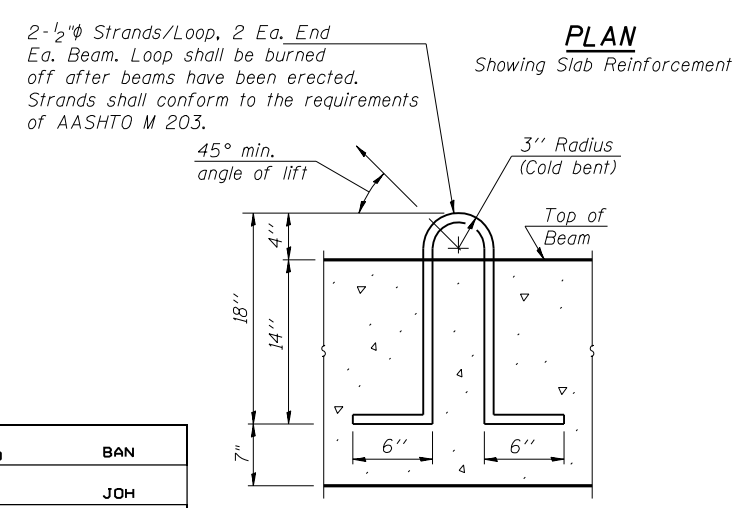
BAR S



BAR A1

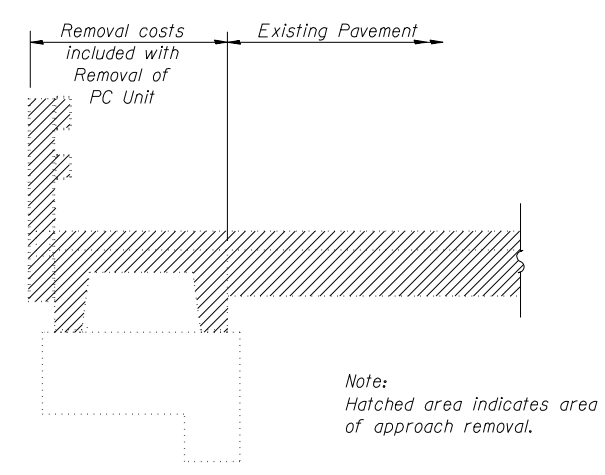


BAR D(E)



LIFTING LOOP DETAIL

Approved alternate may be substituted for the above



TYPICAL APPROACH REMOVAL SECTION

Note:
Hatched area indicates area of approach removal.

DESIGNED	BAN
CHECKED	JOH
DRAWN	TC
CHECKED	BAN

APPROACH DETAILS
F.A.P. 753 (ILL 104) OVER
WOODS CREEK
SECTION 128BR-1
MORGAN COUNTY
STATION 726+50.29
STR. NO. 069-0022

HUTCHISON ENGINEERING, INC.
JACKSONVILLE, ILLINOIS

Rev: _____ Date: _____