

122 + 1 = 123

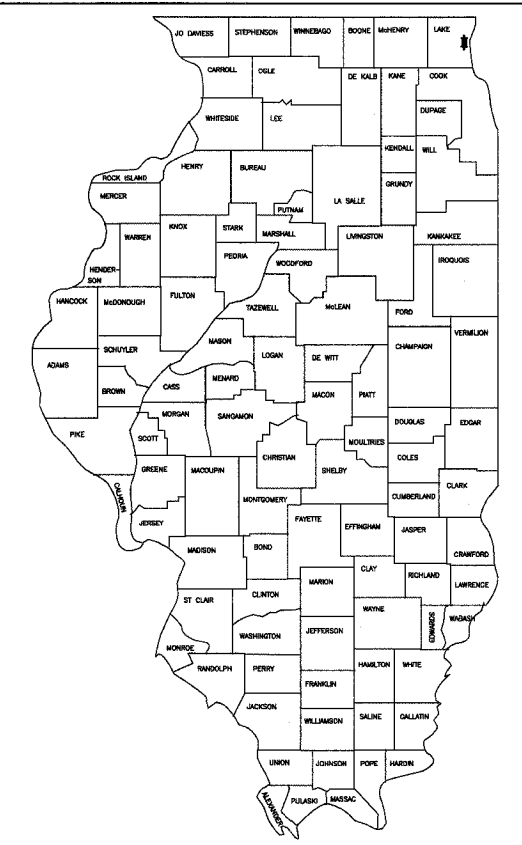
FAU RTE	SECTION	COUNTY	TOTAL SHEETS	SHEET NO.
2736	03-00227-00-RS	LAKE	122	1
F.H.W.A. REG.	ILLINOIS	PROJECT M-8003 (453)	CONTRACT NO. 83829	

INDEX OF SHEETS

Sheet #	Title
1	Cover Sheet
2	Standard Symbols and General Notes
3-4	Summary of Quantities
5-6	Typical Sections
7-7A	Schedule of Quantities
8	Alignment, Curve Data, and Benchmarks
9	Tie Points and Control
10-20	Roadway & Drainage Plan and Profiles
21	Road Closure Detour Plan
22-28	Suggested Staged Traffic Control Plan
29-30	Dist 1 Traffic Control Details
31-41	Sanitary & Water Plan and Profiles
42-44	Watermain Connection Details
45-46	Water and Sewer Construction Details
47-49	Erosion and Sediment Control Plan
50-51	Streetscape and Landscape Plan
52	Streetscape Details and Landscape Notes
53-54	District 1 Construction Details
55-60	Geometric, Striping, and Signage Plan
61	District 1 Typical Marking Detail
62	Underpass General Plan
63	Underpass Box Culvert Details
64	Underpass Bar Splicer Assembly Details
65	Underpass Braced Excavation
66	Underpass Boring Logs
67	Lighting Notes and Legends
68-69	Lighting Demolition
70-74	Lighting Plan
75-76	Lighting Details
77	District 1 Electrical Details
78	Traffic Signal Removal and Plan Modification - Belvidere Road
79	Cable Plan/Phase Diagram Modification - Belvidere Road
80	Temporary Traffic Signal Plan - Washington Street
81	Temporary Cable Plan/Phase Diagram - Washington Street
82	Traffic Signal Plan - Washington Street
83	Cable Plan/Phase Diagram - Washington Street
84	Temporary Traffic Signal Plan - Grand Ave.
85	Temporary Cable Plan/Phase Diagram - Grand Ave.
86	Traffic Signal Plan - Grand Ave.
87	Cable Plan/Phase Diagram - Grand Ave.
88-89	Interconnect Plan
90	Interconnect Schematic
91-95	District 1 Traffic Signal Details
96	Traffic Signal Details
97-122	Cross Sections

**STATE OF ILLINOIS
DEPARTMENT OF TRANSPORTATION
DIVISION OF HIGHWAYS
PLANS FOR PROPOSED
FEDERAL AID URBAN PROJECT**

**F.A.U. ROUTE 2736 SHERIDAN ROAD
(BELVIDERE ROAD TO GRAND AVENUE)
ROADWAY RECONSTRUCTION AND TRAFFIC SIGNALS
SECTION No. 03-00227-00-RS
PROJECT No. M-8003 (453)
CITY OF WAUKEGAN
LAKE COUNTY, ILLINOIS
C-91-190-04**

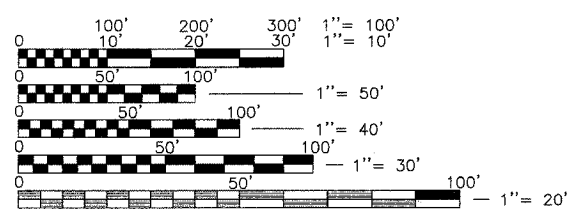


LOCATION OF SECTION INDICATED THUS:

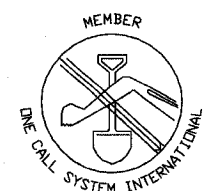
DESIGN DESIGNATION: URBAN MINOR ARTERIAL

SCALES

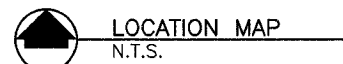
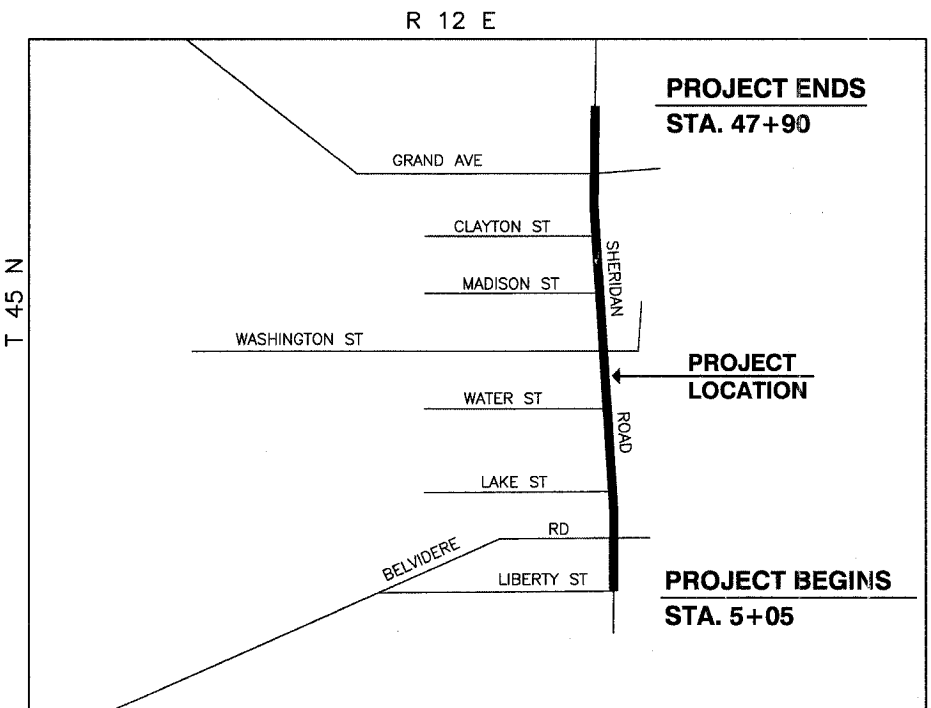
PLAN	1"=20'
PROFILES	1"=20' (HORIZONTAL) 1"=2' (VERTICAL)
CROSS SECTION	1"=5'



FULL SIZE PLANS HAVE BEEN PREPARED USING STANDARD ENGINEERING SCALES, REDUCED SIZED PLANS WILL NOT CONFORM TO STANDARD SCALES, IN MAKING MEASUREMENTS ON REDUCED PLANS, THE ABOVE SCALES MAY BE USED.



CALL J. U. L. I. E. BEFORE YOU DIG
1-800-892-0123
TOLL FREE



GROSS LENGTH OF PROJECT = 4285 FEET 0.81 MILES
NET LENGTH OF PROJECT = 4285 FEET 0.81 MILES

SPEED LIMIT
POSTED SPEED: 30 MPH
DESIGN SPEED: 35 MPH

TRAFFIC DATA
ADT: 7300 (2005)
11542 (2030)

CITY OF WAUKEGAN

APPROVED 07/09/07
John H. Moore
CITY OF WAUKEGAN, CITY ENGINEER

PASSED July-07-07
C. Holt CHRISTOPHER HOLT
DISTRICT ONE ENGINEER OF LOCAL ROADS & STREETS

RELEASING FOR BID
BASED ON LIMITED
REVIEW July 17, 2007
Diane O'Keefe/Cul
DEPUTY DIRECTOR OF HIGHWAYS, REGION ONE ENGINEER

McCLURE ENGINEERING ASSOCIATES, INC.
2728 Grand Avenue
Waukegan, Illinois 60085
TEL 847-336-7100 FAX 847-336-7155
Design Firm License: Illinois #184-000816
Copyright 2007 by
McClure Engineering Associates, Inc.



Daniel B. Drew
DANIEL B. DREW
ILLINOIS LICENSED PROFESSIONAL ENGINEER
NO. 062-055312
EXPIRATION DATE 11/30/07

PRINTED BY THE AUTHORITY OF THE STATE OF ILLINOIS

ASSOCIATE FIELD ENGINEER - JESSICA FELICIANO (847) 705-4487

CONTRACT NO. 83829