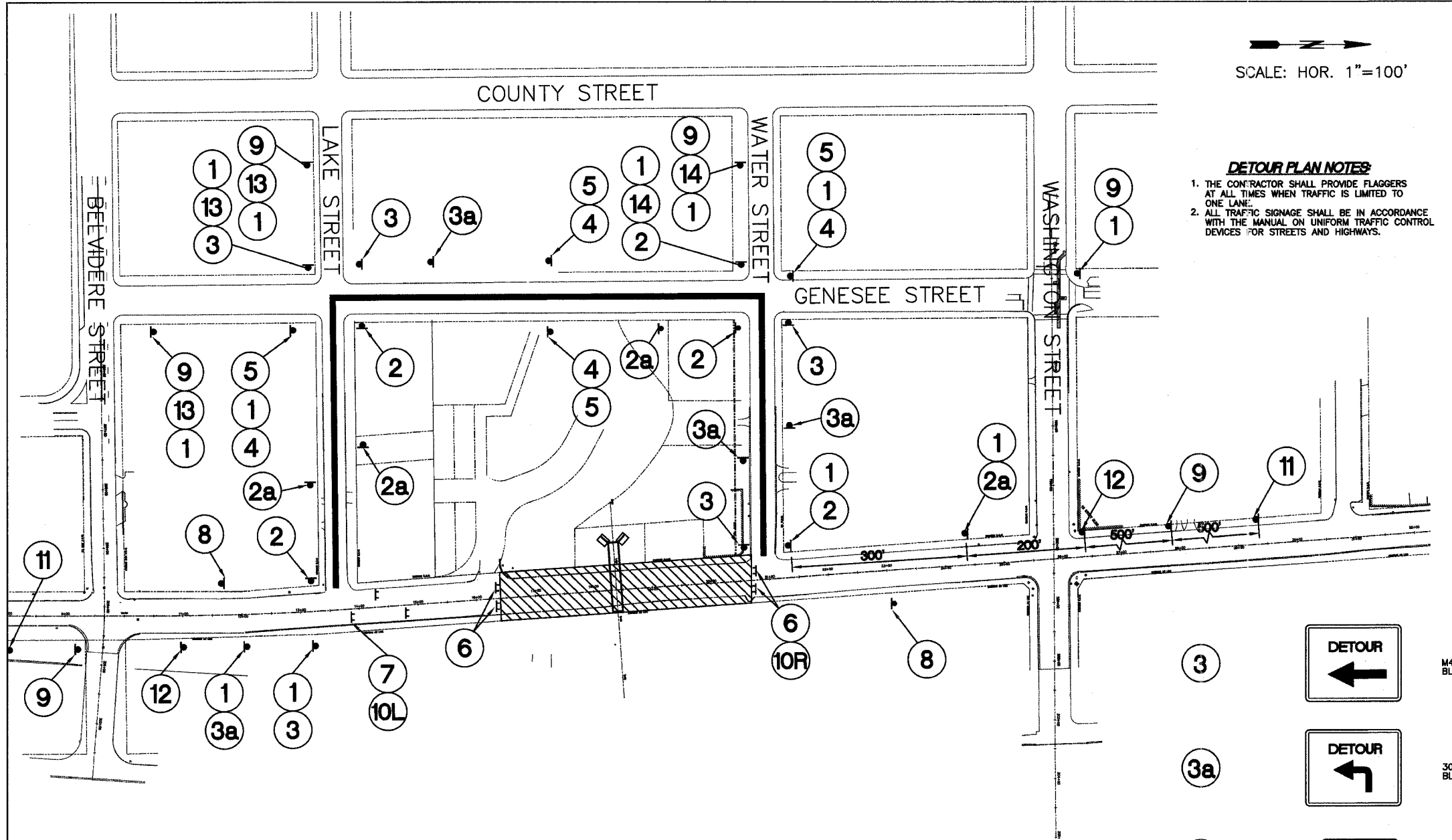
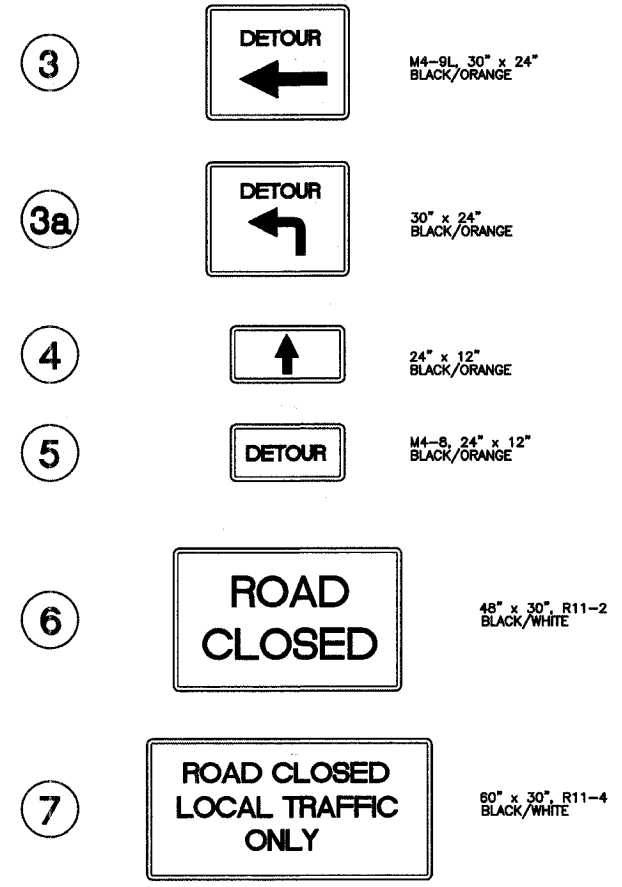
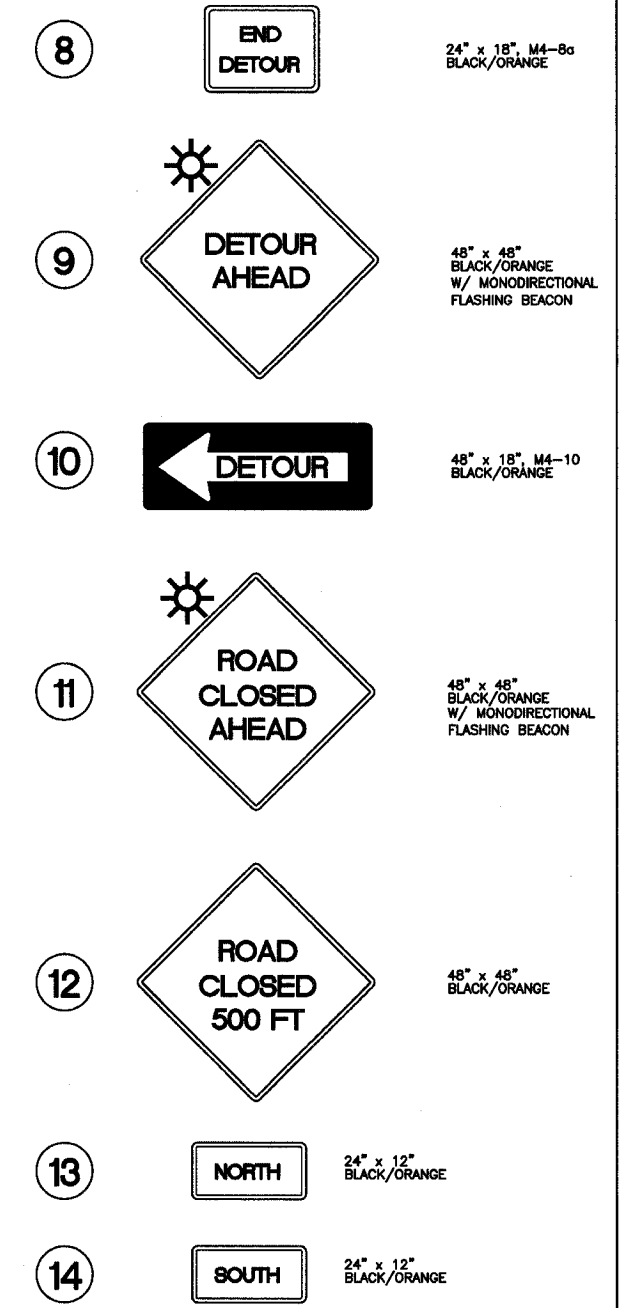
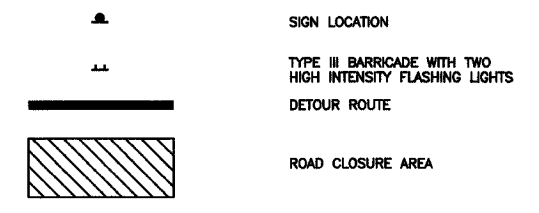


SCALE: HOR. 1"=100'



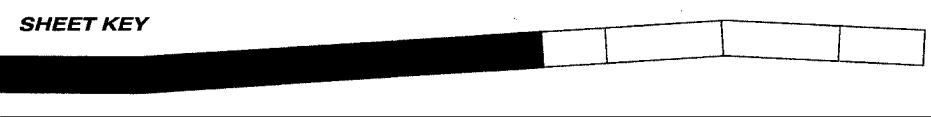
DETOUR PLAN NOTES:
 1. THE CONTRACTOR SHALL PROVIDE FLAGGERS AT ALL TIMES WHEN TRAFFIC IS LIMITED TO ONE LANE.
 2. ALL TRAFFIC SIGNAGE SHALL BE IN ACCORDANCE WITH THE MANUAL ON UNIFORM TRAFFIC CONTROL DEVICES FOR STREETS AND HIGHWAYS.

LEGEND



TRAFFIC CONTROL GENERAL NOTES

- EMERGENCY VEHICLE ACCESS SHALL BE MAINTAINED AT ALL TIMES
- SIGNS ARE TO BE REUSED FOR SUBSEQUENT STAGES WHEN APPLICABLE. FURNISHING, RELOCATION AND REMOVAL NECESSARY BETWEEN STAGES SHALL BE CONSIDERED INCIDENTAL TO THE COST OF TRAFFIC CONTROL AND PROTECTION
- THE CONTRACTOR SHALL MAINTAIN A MINIMUM OF 11' CLEAN AND CLEAR ROADWAY. ACCESS TO DRIVEWAYS AND SIDE STREETS SHALL BE MAINTAINED THROUGHOUT CONSTRUCTION.
- ADDITIONAL SIGNS, BARRICADES, DELINEATORS, PAVEMENT MARKINGS OR OTHER TRAFFIC CONTROL PROTECTION ITEMS TO BE PLACED PER APPLICABLE STANDARDS AND AS DIRECTED BY THE ENGINEER.
- ALL CONES, DRUMS OR BARRICADES TO HAVE 25' SPACING FOR 250' AROUND CORNERS. AT ALL OTHER LOCATIONS BARRELS SHALL BE PLACED EVERY 50'
- MAINTENANCE OF TRAFFIC AS DENOTED ON THE PLANS IS INTENDED TO BE USED AS A GENERAL GUIDE FOR THE SEQUENCE OF CONSTRUCTION. CHANGES MAY BE PROPOSED BY THE CONTRACTOR AS A PART OF THE WRITTEN "SEQUENCE OF CONSTRUCTION" REQUIRED PRIOR TO THE START OF CONSTRUCTION TO BE APPROVED BY THE ENGINEER. ALL CHANGES TO THE APPROVED SEQUENCE DURING THE COURSE OF CONSTRUCTION SHALL BE REQUESTED IN WRITING BY THE CONTRACTOR AND SHALL BE APPROVED BY THE ENGINEER.
- ANY EXISTING SIGNS THAT DO NOT APPLY TO THE CONSECUTION TRAFFIC PATTERNS SHALL BE REMOVED OR COVERED. ANY EXISTING PAVEMENT MARKINGS WHICH CONFLICT WITH THE STAGING TRAFFIC CONTROL SHALL BE REMOVED.
- TEMPORARY PAVEMENT MARKINGS WHICH FALLS OUTSIDE THE PROPOSED PAVING LIMITS SHALL BE TYPE III PAVEMENT MARKING TAPE.
- ALL TYPE I & II BARRICADES AND DRUMS SHALL BE EQUIPPED WITH MONODIRECTIONAL STEADY-BURN AMBER LIGHTS. THE USE OF FLASHING AMBER LIGHTS WILL NOT BE ALLOWED ON TYPE I & II BARRICADES OR DRUMS. ALL TYPE III BARRICADES SHALL BE EQUIPPED WITH TWO FLASHING AMBER LIGHTS EACH. ALL TYPE I & II BARRICADES SHALL BE WEIGHTED DOWN WITH TWO SANDBAGS EACH. ALL TYPE III BARRICADE SHALL BE WEIGHTED DOWN WITH FOUR SANDBAGS EACH.
- ALL ADVANCED WARNING SIGNS SHALL BE INSTALLED TWO DAYS PRIOR TO THE START OF CONSTRUCTION.
- ALL WARNING SIGNS SHALL HAVE BLACK LEGEND AND BORDER ON REFLECTORIZED ORANGE BACKGROUND UNLESS OTHERWISE SPECIFIED. WARNING SIGNS SHALL BE IN LIKE NEW CONDITION. DAMAGED AND/OR DIRTY WARNING SIGNS WILL NOT BE ALLOWED.
- WORK WHICH MAY INTERFERE WITH TRAFFIC FLOW AT INTERSECTIONS SHALL BE PERFORMED BETWEEN 9:00AM AND 3:00PM UNLESS DIRECTED BY THE ENGINEER. FLAGGERS SHALL BE USED FOR ALL SUCH OPERATIONS.
- ALL SAWCUTTING REQUIRED FOR THE STAGES OF CONSTRUCTION SHALL NOT BE PAID FOR SEPARATELY, BUT SHALL BE INCLUDED IN THE COST OF THE VARIOUS REMOVAL ITEMS.
- ALL TEMPORARY BITUMINOUS PAVEMENT SHALL BE REMOVED AND DISPOSED OF OFFSITE IN A LEGAL MANNER PRIOR TO THE START OF THE SUBSEQUENT CONSTRUCTION STAGE.
- THE EXISTING PAVEMENT TO BE UTILIZED FOR ANY PARTICULAR PHASE OF TRAFFIC CONTROL SHALL BE PATCHED AS DIRECTED BY THE ENGINEER. THIS WORK SHALL BE PAID FOR AT THE CONTRACT UNIT PRICE FOR CLASS D PATCHING.



REVISIONS		
NO.	ITEM	DATE

SCALE:	1" = 100'
DRAWN BY:	MRT
CHECKED BY:	DBD
DATE:	1-16-06

McCLURE ENGINEERING ASSOCIATES, INC.
 2728 Grand Ave. Waukegan, Ill. 60085
 TEL 847-336-7100 FAX 847-336-7155
 Design Firm License: Illinois #184-000816
 Copyright 2004 by McClure Engineering Associates, Inc.

SHERIDAN ROAD CLOSURE DETOUR PLAN
SHERIDAN ROAD IMPROVEMENTS
 CITY OF WAUKEGAN JOB NUMBER: 02-28-04-184 LAKE COUNTY, ILLINOIS
 W:\dwg\WK\SHERIDAN-RD\Sher-TrafficControl.dwg 8/26/2005 1:17:23 PM CDT