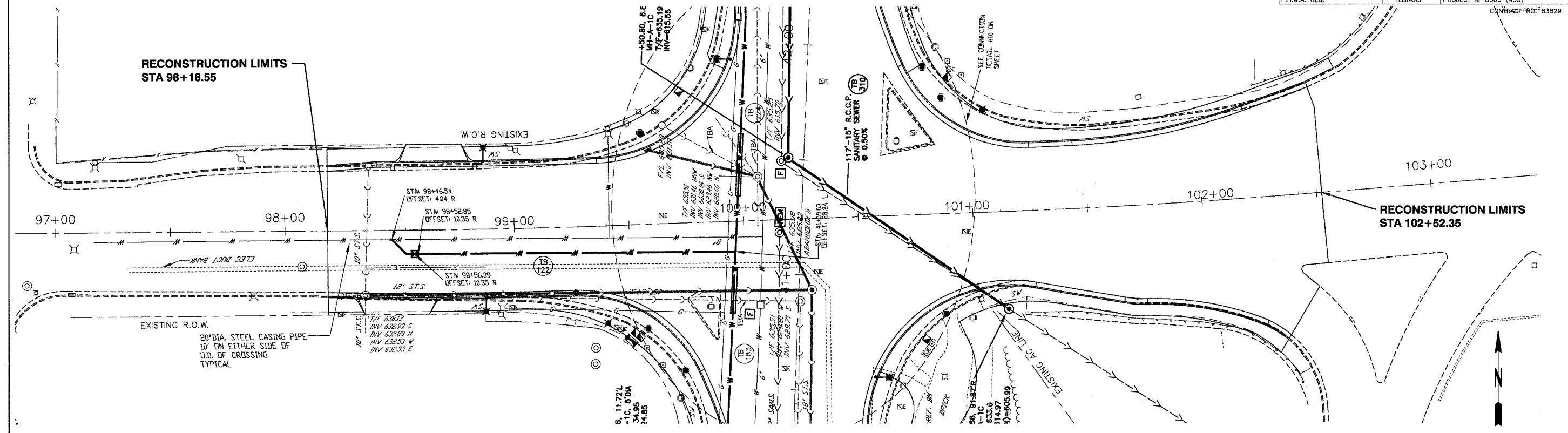


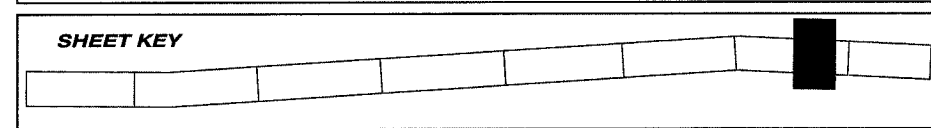
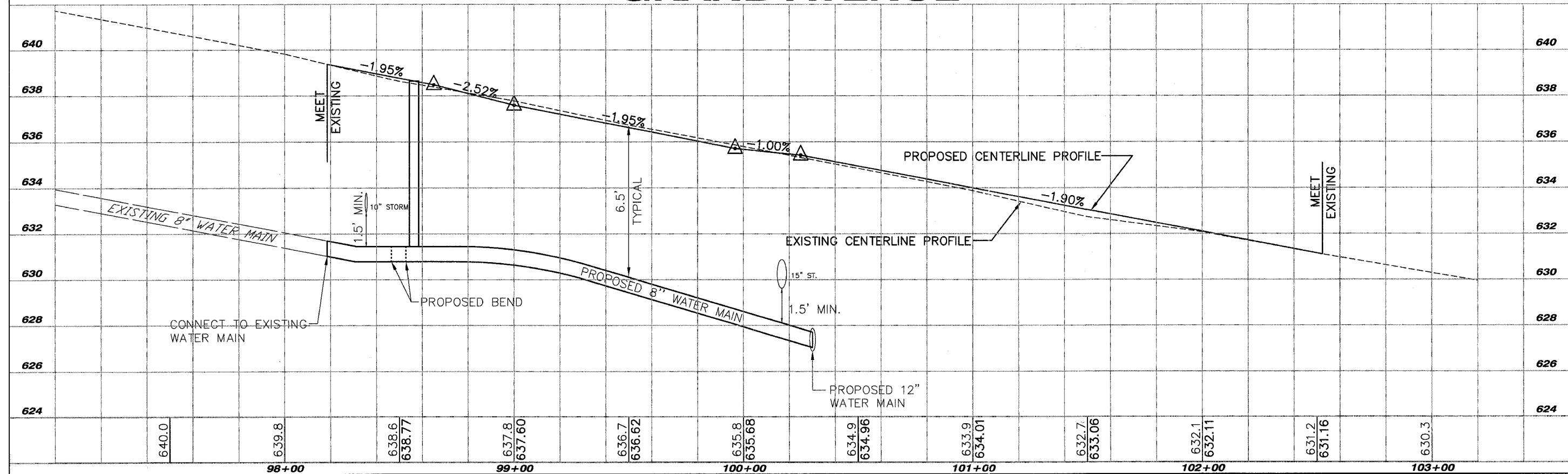
FAU RTE	SECTION	COUNTY	TOTAL SHEETS	SHEET NO.
2736	03-00227-00-RS	LAKE	122	41
F.H.W.A. REG.	ILLINOIS	PROJECT M-8003 (453)	CONTRACT NO. 83829	

WATER MAIN TRENCH BACKFILL (C.Y.)
 STA 98+00 TO 98+50 = 22
 STA 98+50 TO 100+50 = 148



GRAND AVENUE

SCALE: HOR. 1"=20'
 VER. 1"=2'



REVISIONS		
NO.	ITEM	DATE

SCALE: 1" = 20'
 DRAWN BY: WS
 CHECKED BY: DBD
 DATE: 1-18-06

McCLURE ENGINEERING ASSOCIATES, INC.
 2728 Grand Avenue
 Waukegan, Illinois 60085
 TEL 847-336-7100 FAX 847-336-7155
 Design Firm License: Illinois #184-000816
 Copyright 2005 by McClure Engineering Associates, Inc.

SANITARY & WATER - PLAN & PROFILE
SHERIDAN ROAD IMPROVEMENTS
 CITY OF WAUKEGAN JOB NUMBER: 02-28-04-164 LAKE COUNTY, ILLINOIS
 W:\dwg\WK\SHERIDAN-RD\SheridanRd.dwg 3/10/2006 10:39:49 AM CST

SHEET NO.
41
 of
122