

SCALE: HOR. 1"=20'

NOTE:  
EXISTING SIGN PANELS TO BE SALVAGED  
SHALL BE DELIVERED TO THE CITY OF  
WAUKEGAN PUBLIC WORKS FACILITY.

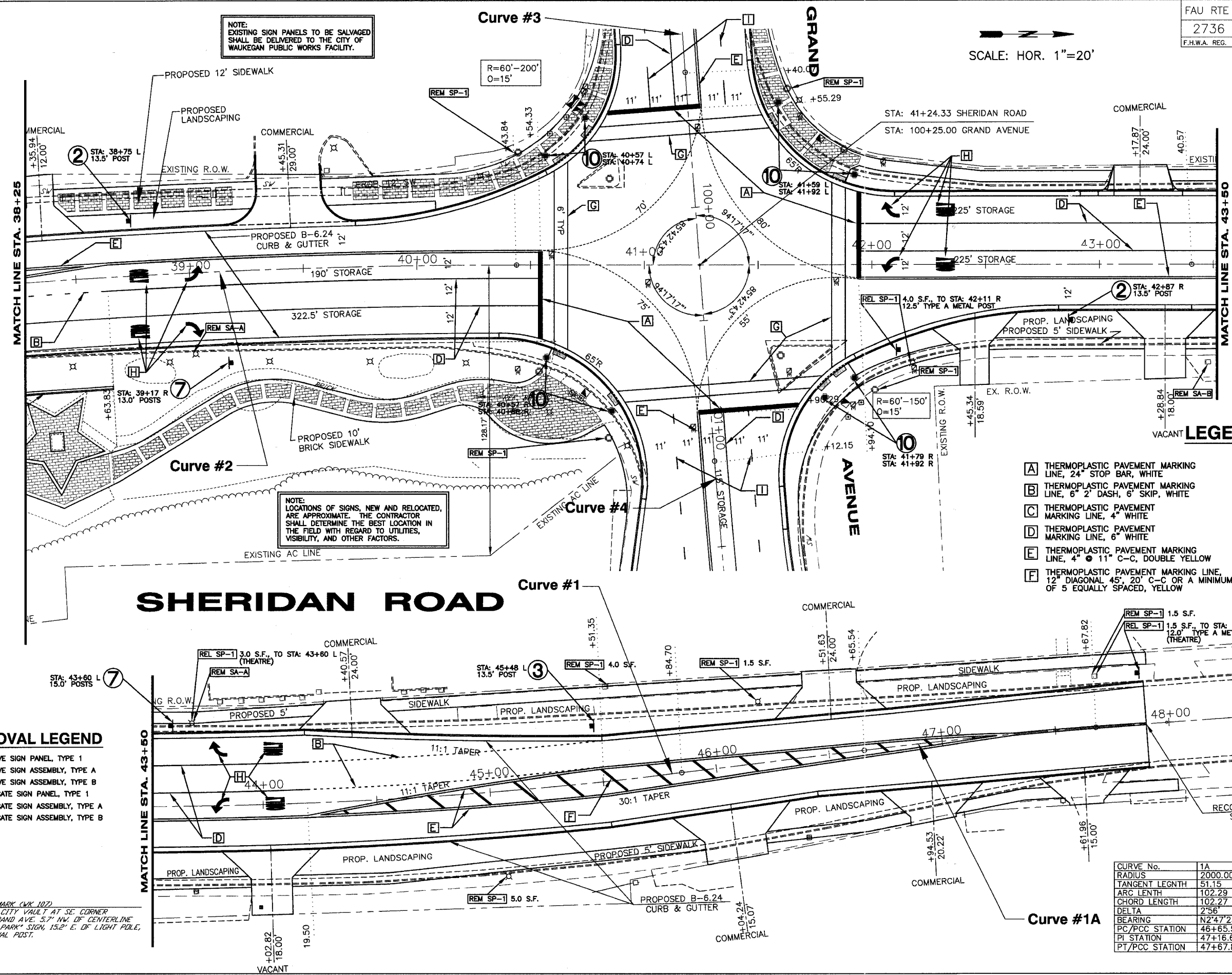
**SIGN LEGEND**

- ② SIGN PANEL TYPE 1  
R2-1 W/ TYPE B  
METAL POST  
24"x30"  
WHITE/BLACK
- ③ SIGN PANEL TYPE 1  
R3-5(R) W/ TYPE B  
METAL POST  
30"x36"  
WHITE/BLACK
- ⑦ SIGN PANEL TYPE 2  
R3-8b W/ TYPE 2A  
METAL POST  
45"x30"  
WHITE/BLACK
- ⑩ SIGN PANEL TYPE 1  
R10-4, ATTACH TO  
TRAFFIC SIGNAL  
9"x12"  
WHITE/BLACK

**LEGEND**

- A THERMOPLASTIC PAVEMENT MARKING LINE, 24" STOP BAR, WHITE
- B THERMOPLASTIC PAVEMENT MARKING LINE, 6" 2" DASH, 6" SKIP, WHITE
- C THERMOPLASTIC PAVEMENT MARKING LINE, 4" WHITE
- D THERMOPLASTIC PAVEMENT MARKING LINE, 6" WHITE
- E THERMOPLASTIC PAVEMENT MARKING LINE, 4" @ 11" C-C, DOUBLE YELLOW
- F THERMOPLASTIC PAVEMENT MARKING LINE, 12" DIAGONAL 45°, 20" C-C OR A MINIMUM OF 5 EQUALLY SPACED, YELLOW
- G THERMOPLASTIC PAVEMENT MARKING LINE, 6" WHITE, CROSSWALK WIDTH 6" MIN.
- H THERMOPLASTIC PAVEMENT MARKING LETTERS & SYMBOLS
- I THERMOPLASTIC PAVEMENT MARKING LINE, 4" 10" DASH, 30" SKIP, WHITE
- J THERMOPLASTIC PAVEMENT MARKING LINE, 12" DIAGONAL 45°, 20" C-C OR A MINIMUM OF 5 EQUALLY SPACED, WHITE
- K THERMOPLASTIC PAVEMENT MARKING LINE, 8" WHITE
- INDICATES LOCATION OF DETECTABLE WARNING

NOTE:  
LOCATIONS OF SIGNS, NEW AND RELOCATED,  
ARE APPROXIMATE. THE CONTRACTOR  
SHALL DETERMINE THE BEST LOCATION IN  
THE FIELD WITH REGARD TO UTILITIES,  
VISIBILITY, AND OTHER FACTORS.



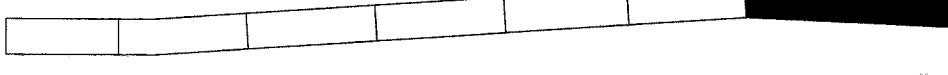
**REMOVAL LEGEND**

- REM SP-1 REMOVE SIGN PANEL, TYPE 1
- REM SA-A REMOVE SIGN ASSEMBLY, TYPE A
- REM SA-B REMOVE SIGN ASSEMBLY, TYPE B
- REL SP-1 RELOCATE SIGN PANEL, TYPE 1
- REL SA-A RELOCATE SIGN ASSEMBLY, TYPE A
- REL SA-B RELOCATE SIGN ASSEMBLY, TYPE B

REFERENCE BENCHMARK (W/ 102)  
ALUMINUM DISK IN CITY VAULT AT SE CORNER  
SHERIDAN RD. & GRAND AVE. 5.7' NW OF CENTERLINE  
"HAIG PARAVONIAN PARK" SIGN, 15.2' E. OF LIGHT POLE,  
26.5' SSE OF SIGNAL POST,  
ELEV. 633.96

CURVE No.	1A	1	2	3	4
RADIUS	2000.00	2000.00	3000.00	3000.00	3000.00
TANGENT LENGTH	51.15	122.22	165.71	43.79	65.10
ARC LENGTH	102.29	244.13	331.08	87.57	130.18
CHORD LENGTH	102.27	243.98	330.91	87.57	130.17
DELTA	2°56'	7°0'	6°19'	1°40'	2°29'
BEARING	N2°47'23"W	N0°45'29"W	N0°25'21"W	N89°17'14"E	N87°12'28"E
PC/PCC STATION	46+65.54	43+40.57	37.12.76	98+52.50	101+12.15
PI STATION	47+16.68	44+62.79	38+78.47	98+96.29	101+77.25
PT/PCC STATION	47+67.83	45+84.70	40+43.84	99+40.07	102+42.33

**SHEET KEY**



REVISIONS		
NO.	ITEM	DATE

SCALE: 1" = 20'  
DRAWN BY: WS  
CHECKED BY: DBD  
DATE: 1-16-06

**McCLURE ENGINEERING ASSOCIATES, INC.**  
2728 Grand Avenue  
Waukegan, Illinois 60085  
TEL 847-336-7100 FAX 847-336-7155  
Design Firm License: Illinois #184-000816  
Copyright 2004 by  
McClure Engineering Associates, Inc.

**GEOMETRIC, STRIPING AND SIGNAGE PLAN**  
**SHERIDAN ROAD IMPROVEMENTS**  
CITY OF WAUKEGAN JOB NUMBER: 02-28-04-164 LAKE COUNTY, ILLINOIS  
W:\dwg\WK\SHERIDAN-RD\_Sher-Striping.dwg 7/18/2006 9:49:01 AM CST