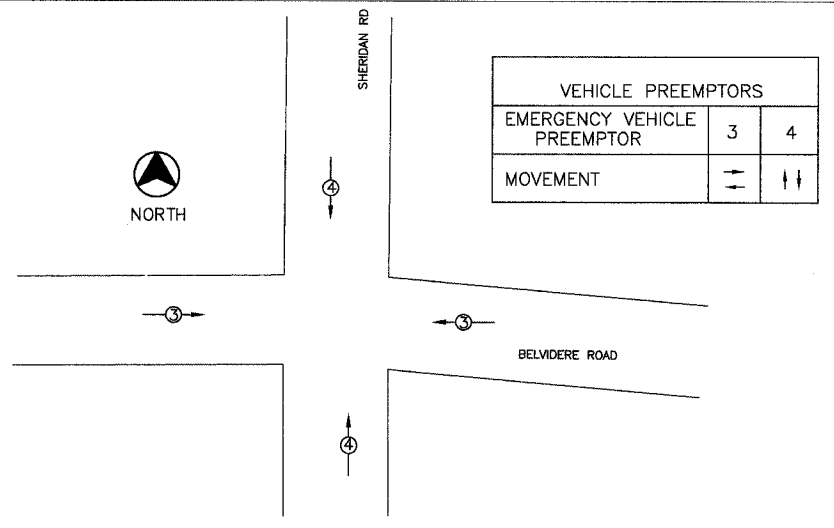


CABLE PLAN LEGEND

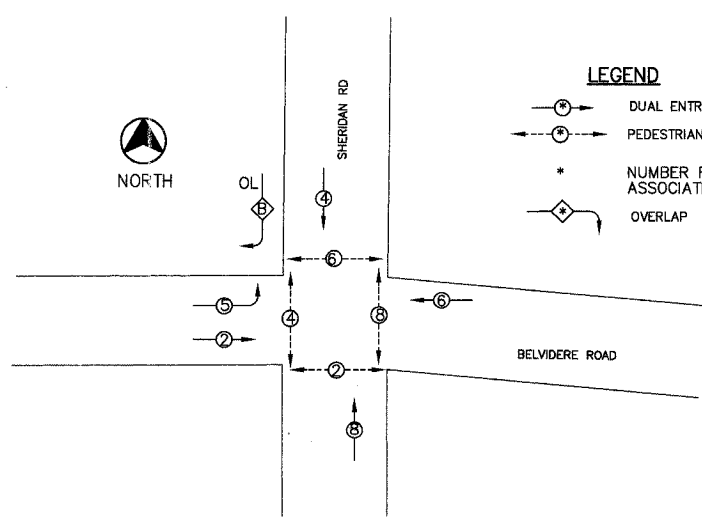
EXISTING	PROPOSED	DESCRIPTION
[Symbol]	[Symbol]	8" (200MM) TRAFFIC SIGNAL SECTION
[Symbol]	[Symbol]	12" (300MM) TRAFFIC SIGNAL SECTION
[Symbol]	[Symbol]	12" (300MM) PEDESTRIAN SIGNAL SECTION
[Symbol]	[Symbol]	12" (300MM) PEDESTRIAN SIGNAL SECTION
[Symbol]	[Symbol]	CONTROLLER CABINET
[Symbol]	[Symbol]	SERVICE INSTALLATION
[Symbol]	[Symbol]	VEHICLE DETECTOR, INDUCTION LOOP
[Symbol]	[Symbol]	MAGNETIC DETECTOR
[Symbol]	[Symbol]	EMERGENCY VEHICLE LIGHT DETECTOR
[Symbol]	[Symbol]	CONFIRMATION BEACON
[Symbol]	[Symbol]	PUSHBUTTON DETECTOR
[Symbol]	[Symbol]	DENOTES NUMBER OF CONDUCTORS. ALL CABLE NO. 14 EXCEPT AS INDICATED. ALL LOOP DETECTOR CABLE TO BE SHIELDED.
[Symbol]	[Symbol]	SIGNAL FACE WITH BACKPLATE. *P INDICATES PROGRAMMED HEAD.
[Symbol]	[Symbol]	SIGNAL FACE WITHOUT BACKPLATE. *P INDICATES PROGRAMMED HEAD.

S	[Symbol]	GROUND ROD @ SERVICE INSTALLATION
C	[Symbol]	GROUND ROD AT CONTROLLER (C), POST (P), OR MAST ARM (MA)
[Symbol]	[Symbol]	PROPOSED LUMINAIRE
[Symbol]	[Symbol]	VIDEO IMAGE CABLE, BELDEN 8281 COAXIAL CABLE

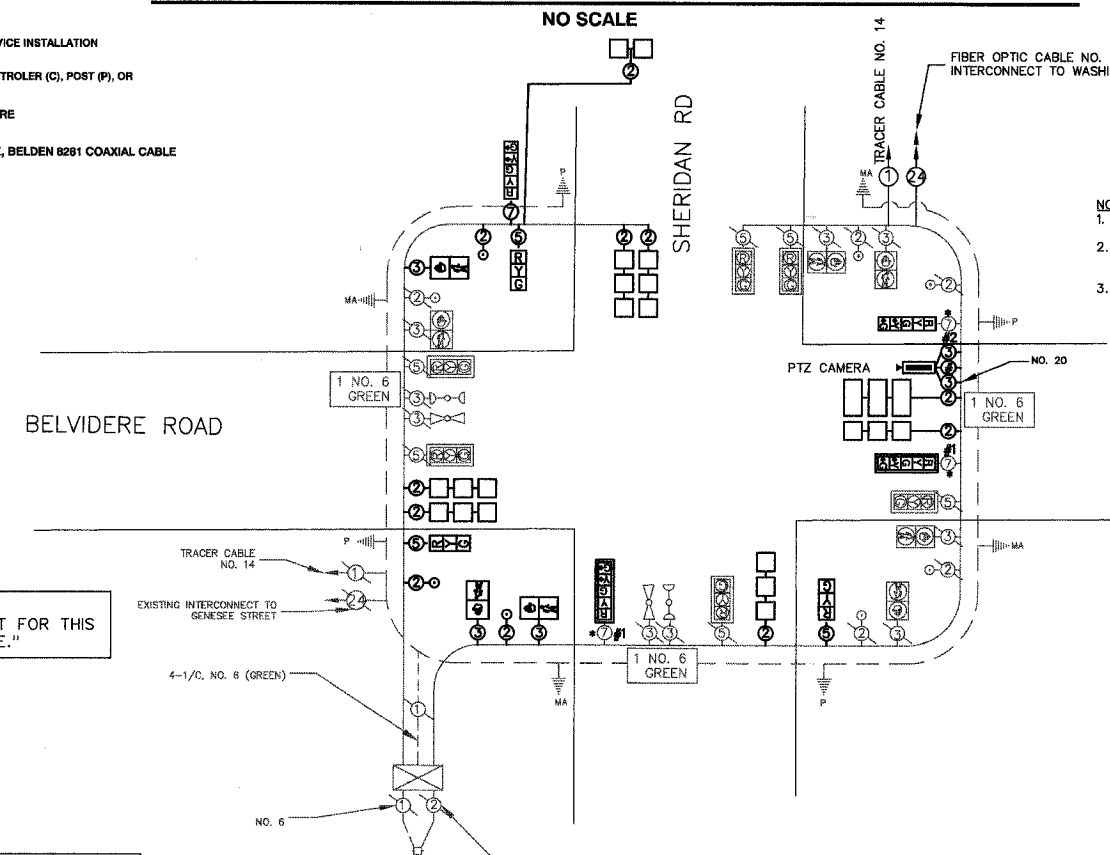
VEHICLE PREEMPTORS		
EMERGENCY VEHICLE PREEMPTOR	3	4
MOVEMENT	→	↑



EMERGENCY VEHICLE PREEMPTION SEQUENCE



PHASE DESIGNATION DIAGRAM



CABLE PLAN

NO SCALE

- NOTES:
- ALL LOOP CABLES SHALL BE NO. 14, TWISTED, SHIELDED.
 - DETAILS AND QUANTITIES FOR POST/LUMINAIRES SPECIAL AND COBRA LUMINAIRES ON COMBINATION MAST ARMS, REFER TO LIGHTING PLANS.
 - SEE LIGHTING PLANS FOR LUMINAIRE WIRING AND ELECTRIC FEED.

* IN ANTICIPATION OF THESE UPCOMING IMPROVEMENTS THE CORRECT WIRING HAS ALREADY BEEN INSTALLED TO THE FLAGGED LOCATIONS, PER GEWALT/HAMILTONS IMPROVEMENT PLANS CURRENTLY UNDER CONSTRUCTION.

#1 REBUILD EXISTING SIGNAL HEAD FROM A 1-FACE, 3 SECTION WITH 12" LENSES MAST ARM MOUNTED TO SIGNAL HEAD, 1-FACE, 5 SECTION WITH 12" LENSES MAST ARM MOUNTED WITH BACKPLATE.

#2 REBUILD EXISTING SIGNAL HEAD FROM A 1-FACE, 3 SECTION WITH 12" LENSES BRACKET MOUNTED TO SIGNAL, 1-FACE, 5 SECTION WITH 12" LENSES BRACKET MOUNTED.

NOTE: THE TRAFFIC SIGNAL EQUIPMENT FOR THIS PROJECT SHALL BE "ECONOLITE."

TRAFFIC SIGNAL - SCHEDULE OF QUANTITIES			
CODED PAY ITEM	ITEM DESCRIPTION	UNIT	QUANTITY
81000600	CONDUIT IN TRENCH, 2" DIA., GALVANIZED STEEL	FOOT	276
81000700	CONDUIT IN TRENCH, 1 1/2" DIA., GALVANIZED STEEL	FOOT	30
81000800	CONDUIT IN TRENCH, 3" DIA., GALVANIZED STEEL	FOOT	23
81018600	CONDUIT PUSHED, 2 1/2" DIA., GALVANIZED STEEL	FOOT	151
81400100	HANDHOLE	EACH	2
81400115	HANDHOLE TO BE ADJUSTED	EACH	4
81400200	HEAVY-DUTY HANDHOLE	EACH	3
81500200	TRENCH & BACKFILL FOR ELECTRICAL WORK	FOOT	569
85000200	MAINTENANCE OF EXISTING TRAFFIC SIGNAL INSTALLATION	EACH	1
87301215	ELECTRIC CABLE IN CONDUIT, SIGNAL NO. 14 2/C	FOOT	249
87301225	ELECTRIC CABLE IN CONDUIT, SIGNAL NO. 14 3/C	FOOT	517
87301255	ELECTRIC CABLE IN CONDUIT, SIGNAL NO. 14 7/C	FOOT	205
87301305	ELECTRIC CABLE IN CONDUIT, LEAD-IN, NO. 14 1 PAIR	FOOT	3357
87800100	CONCRETE FOUNDATION, TYPE A	FOOT	8
87900200	DRILL EXISTING HANDHOLE	EACH	11
88040080	SIGNAL HEAD, POLYCARBONATE, LED, 1-FACE, 3-SECTION, BRACKET MOUNTED (SPECIAL)	EACH	1
88040155	SIGNAL HEAD, POLYCARBONATE, LED, 1-FACE, 5-SECTION, BRACKET MOUNTED, SPECIAL	EACH	1
88200110	TRAFFIC SIGNAL BACKPLATE, LOUVERED	EACH	2
88500100	INDUCTIVE LOOP DETECTOR	EACH	6
88600100	DETECTOR LOOP, TYPE 1	FOOT	761
89500100	RELOCATE EXISTING SIGNAL HEAD	EACH	3
89500200	RELOCATE EXISTING PEDESTRIAN SIGNAL HEAD	EACH	3
89500400	RELOCATE EXISTING PEDESTRIAN PUSH-BUTTON	EACH	3
89502105	REBUILD EXISTING SIGNAL HEAD, LED	EACH	3
89502380	REMOVE EXISTING HANDHOLE	EACH	1
89502385	REMOVE EXISTING CONCRETE FOUNDATION	EACH	2
X0323153	ELECTRIC CABLE IN CONDUIT, GROUND, NO. 6 1/C (GREEN)	FOOT	171
X8730320	ELECTRIC CABLE IN CONDUIT, SIGNAL, NO. 20 3/C, TWISTED, SHIELDED	FOOT	241
XX003661	ELECTRIC CABLE IN CONDUIT, COAXIAL	FOOT	241
XX005940	REMOTE-CONTROLLED VIDEO SYSTEM	EACH	1

I.D.O.T. TRAFFIC SIGNAL INSTALLATION ELECTRICAL SERVICE REQUIREMENTS					
TYPE	NO. LAMPS	WATTAGE INCAND.	LED	% OPERATION	TOTAL WATTAGE
SIGNAL					
RED	13	135	10	0.50	110.5
YELLOW	13	135	19	0.25	81.25
GREEN	13	135	11	0.25	48.75
ARROW	8	135	9	0.10	9.6
PED SIGNAL	8	90	9	1.00	200
CONTROLLER	1	100	100	1.00	100
STREET LIGHTS	1	84		0.50	42
ENERGY COSTS TO: ILLINOIS DEPARTMENT OF TRANSPORTATION 201 WEST CENTER COURT, SCHWABING, ILLINOIS 60184-1008					TOTAL = 592.1
ENERGY SUPPLY CONTACT: TERRY BLECK, PHONE: (847) 816-5239, COMPANY: COM. ED.					

FOUNDATION (DEPTH)	(FT.)	CABLE SLACK	(FT.)	VERTICAL	(FT.)
TYPE A - POST	4	HANDHOLE	6.5	ALL FOUNDATIONS	3.5
TYPE D - CONTROLLER	4	DOUBLE HANDHOLE	13	MAST ARM (L) POLE	20'-L-2-
TYPE E - MAST ARM POLE		SIGNAL POST	2	BRACKET MOUNTED	13
24"	10	CONTROLLER CABINET	1	PED. PUSHBUTTON	4
30"	15	FIBER OPTIC	13	ELECTRIC SERVICE	13.5
36"	15	ELECTRIC SERVICE	1	SERVICE TO GROUND	13.5
		GROUND CABLE	1	POST MOUNTED	6
				MAST ARM, LUMINAIRE/CAMERA	40
				MAST ARM, PTZ CAMERA	38.5
				POST LUMINAIRE	30

REVISIONS		
NO.	ITEM	DATE

SCALE:	1" = 20'
DRAWN BY:	MJB
CHECKED BY:	ORF
DATE:	3-3-06

McCLURE ENGINEERING ASSOCIATES, INC.
 2728 Grand Ave. Waukegan, IL 60085
 TEL: 847-336-7100 FAX: 847-336-7155
 EMAIL: wk@mcclureengineering.com
 Design Firm License: Illinois #184-000818
 Copyright 2005 by McClure Engineering Associates, Inc.

CABLE PLAN/PHASE DIAGRAM MODIFICATION
SHERIDAN ROAD AT BELVIDERE ROAD
SHERIDAN ROAD IMPROVEMENTS
 CITY OF WAUKEGAN JOB NUMBER: 02-28-04-164 LAKE COUNTY, ILLINOIS
 W:\dwg\WK\SHERIDAN-RD\Sher-TrafficSignals.dwg 8/26/2005 3:07:04 PM CDT