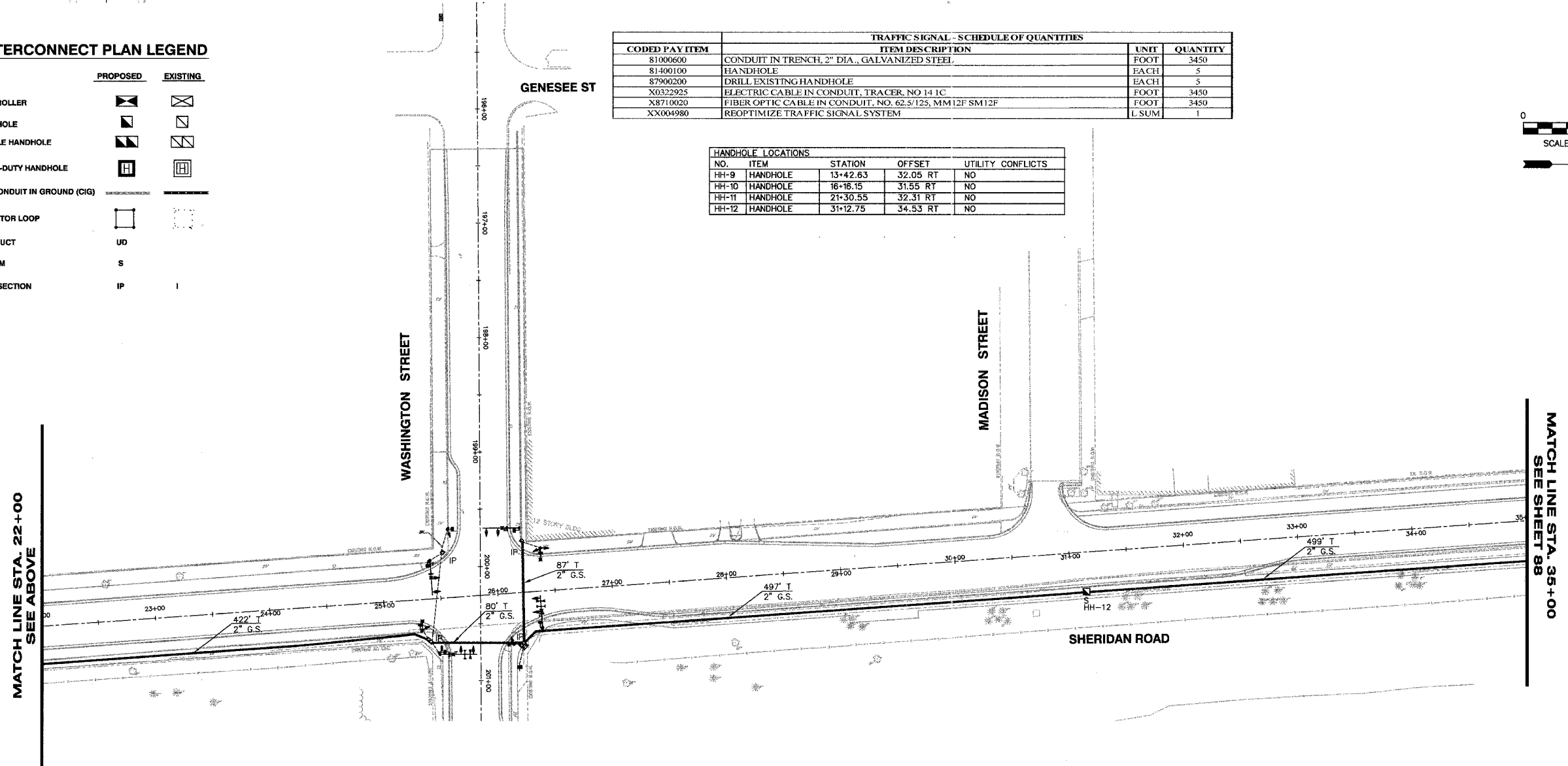
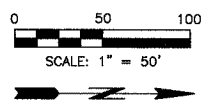


INTERCONNECT PLAN LEGEND

	PROPOSED	EXISTING
CONTROLLER		
HANDHOLE		
DOUBLE HANDHOLE		
HEAVY-DUTY HANDHOLE		
G.S. CONDUIT IN GROUND (CIG)		
DETECTOR LOOP		
UNIT DUCT	UD	
SYSTEM	S	
INTERSECTION	IP	

TRAFFIC SIGNAL - SCHEDULE OF QUANTITIES			
CODED PAY ITEM	ITEM DESCRIPTION	UNIT	QUANTITY
81000600	CONDUIT IN TRENCH, 2" DIA., GALVANIZED STEEL	FOOT	3450
81400100	HANDHOLE	EACH	5
87900200	DRILL EXISTING HANDHOLE	EACH	5
X0322925	ELECTRIC CABLE IN CONDUIT, TRACER, NO 14 1C	FOOT	3450
X8710020	FIBER OPTIC CABLE IN CONDUIT, NO. 62.5/125, MM12F SM12F	FOOT	3450
XX004980	REOPTIMIZE TRAFFIC SIGNAL SYSTEM	L SUM	1

HANDHOLE LOCATIONS				
NO.	ITEM	STATION	OFFSET	UTILITY CONFLICTS
HH-9	HANDHOLE	13+42.63	32.05 RT	NO
HH-10	HANDHOLE	16+16.15	31.55 RT	NO
HH-11	HANDHOLE	21+30.55	32.31 RT	NO
HH-12	HANDHOLE	31+12.75	34.53 RT	NO



REVISIONS		
NO.	ITEM	DATE

SCALE: 1" = 50'
 DRAWN BY: NMB
 CHECKED BY: CRF
 DATE: 3-3-06

McCLURE ENGINEERING ASSOCIATES, INC.
 2728 Grand Ave. Waukegan, IL 60085 Design Firm License: Illinois #184-000816
 TEL 847-336-7100 FAX 847-336-7155 Copyright 2005 by
 EMAIL: wk@mcclureengineering.com McClure Engineering Associates, Inc.

INTERCONNECT PLAN FROM BELVIDERE ROAD TO STA 35+00 SHERIDAN ROAD IMPROVEMENTS
 CITY OF WAUKEGAN JOB NUMBER: 02-28-04-164 LAKE COUNTY, ILLINOIS
 W:\dwg\WK\SHERIDAN-RD\Sher-TrafficSignals.dwg 8/26/2005 3:07:04 PM CDT