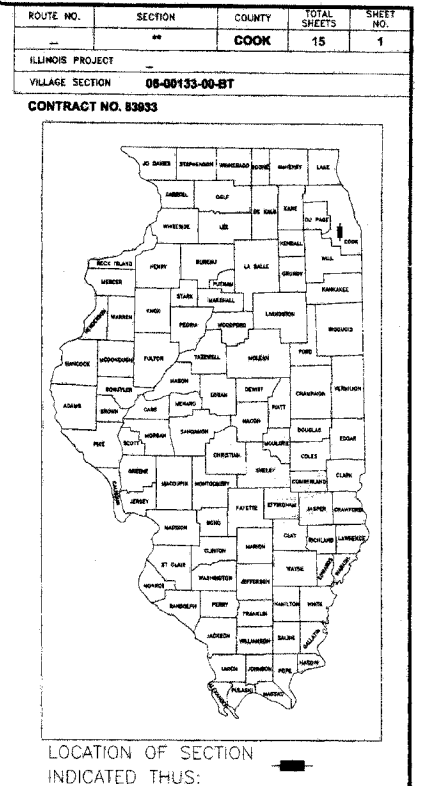


FOR INDEX OF SHEETS SEE SHEET NO. 2

STATE OF ILLINOIS
DEPARTMENT OF TRANSPORTATION
DIVISION OF HIGHWAYS
PLANS FOR
PROPOSED FEDERAL AID HIGHWAY
ILLINOIS PRAIRIE PATH IMPROVEMENTS
AT IHB RAILROAD OVERPASS,
SECURITY FENCING, LIGHTING, AND
PAVEMENT MARKING
SECTION NO: 06-00133-00-BT
PROJECT: TE-D001(756)
JOB NO: C-91-143-07
VILLAGE OF BELLWOOD
COOK COUNTY

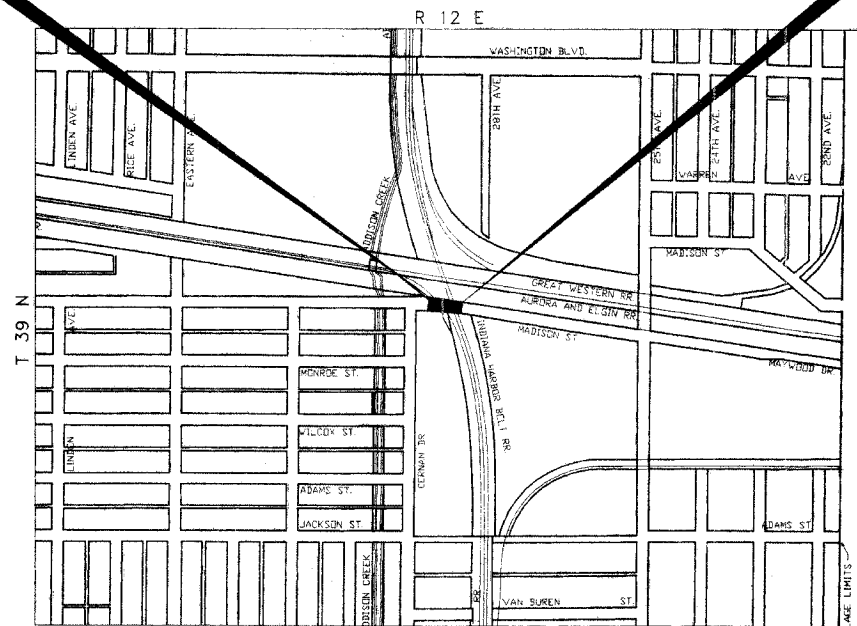
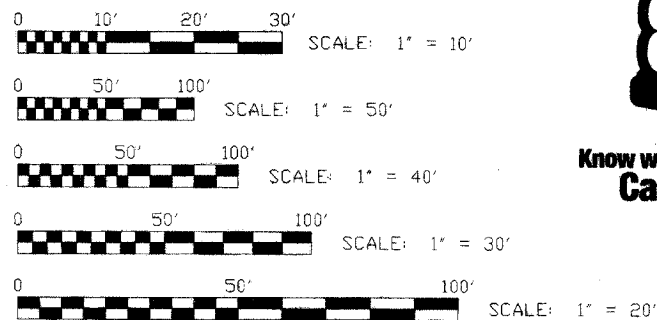


PROJECT LOCATED IN
THE VILLAGE OF BELLWOOD

PROJECT BEGINS
STATION 0+95

PROJECT ENDS
STATION 5+17

LOCATION MAP



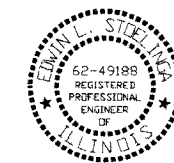
STATE OF ILLINOIS
DEPARTMENT OF TRANSPORTATION
DIVISION OF HIGHWAYS

APPROVED June 6 20 07
Frank A. Prognier
VILLAGE OF BELLWOOD, PRESIDENT

PASSED July 20 20 06
Christopher Holt
DISTRICT ENGINEER OF LOCAL ROADS & STREETS

RELEASING FOR BID
BASED ON LIMITED
REVIEW July 20 20 07
Diane O'Keefe
DEPUTY DIRECTOR OF HIGHWAYS, REGION I ENGINEER

(PRINTED BY AUTHORITY OF THE STATE OF ILLINOIS)



DATE SIGNED: Emil Steelinka 5-7-07
LICENSE EXPIRES: 11-30-07

CONTRACT NO. 83933

PROVISO TOWNSHIP

MAP SCALE : 1" = 1'

█ - AREA OF IMPROVEMENT

GROSS LENGTH OF IMPROVEMENT = 373.0 FT. = 0.07 MI.



◆ Civil Engineers
◆ Municipal Consultants
◆ Established 1911

9933 Roosevelt Road
Westchester, Illinois 60154-2780
Phone: 708/865-0300
Fax: 708/865-1212

INDEX OF SHEETS

SHEET NO.	DESCRIPTION
1	TITLE SHEET, LOCATION MAP
2	INDEX OF SHEETS, LEGEND OF SYMBOLS, AND STANDARD DRAWINGS
3	SUMMARY OF QUANTITIES
4	SITE PLAN
5	LIGHTING AND P.C.C. SIDEWALK, 5" DETAILS
6-8	OVERPASS LIGHTING PLAN AND LIGHTING DETAILS
9-10	CHAIN LINK FENCE DETAILS
11	PIER/ABUTMENT MOUNTED UNDERPASS LUMINAIRE INSTALLATION DETAILS
12	PORTLAND CEMENT CONCRETE/COMPOSITE CONCRETE DETAILS
13	SIGN PANEL MOUNTING DETAILS
14	SIGN PANEL ERECTION DETAILS
15	STANDARD SYMBOLS, ABBREVIATIONS AND PATTERNS

GENERAL NOTES

FIELD OFFICE

THE CONTRACTOR WILL NOT BE ALLOWED TO SET UP A YARD OR FIELD OFFICE ON STATE OR VILLAGE PROPERTY WITHOUT WRITTEN PERMISSION FROM THE DEPARTMENT OR THE VILLAGE.

BARRICADES

THE CONTRACTOR SHALL PROVIDE AND INSTALL TWO (2) WEIGHTED SANDBAGS ON EACH TYPE I OR TYPE II BARRICADE USED, ONE (1) WEIGHTED SANDBAG ACROSS EACH BOTTOM RAIL.

SAW CUTTING

THE CONTRACTOR SHALL SAW CUT SIDEWALK AS INDICATED ON THE PLANS TO SEPARATE THE EXISTING SIDEWALK TO BE REMOVED BY APPROVED MEANS OR AN APPROVED CONCRETE SAW TO A DEPTH AS DIRECTED BY THE ENGINEER. SUITABLE GUIDELINES OR DEVICES SHALL BE USED TO ASSURE CUTTING A NEAT, STRAIGHT LINE AS SHOWN ON THE PLANS. CARE SHALL BE TAKEN BY THE CONTRACTOR AS NOT TO DAMAGE THE REMAINING SIDEWALK DIRECTLY ADJACENT TO THE SIDEWALK TO BE REMOVED. ANY DAMAGE TO THE EXISTING SIDEWALK RESULTING FROM SIDEWALK REMOVAL OPERATIONS SHALL BE REPAIRED AT THE CONTRACTOR'S EXPENSE. THE COST OF SAW CUTTING SHALL BE INCLUDED IN THE ITEM BEING REMOVED.

STANDARDS

ANY REFERENCE TO STANDARDS THROUGHOUT THE PLANS OR SPECIAL PROVISIONS SHALL BE INTERPRETED TO BE THE LATEST STANDARD OF THE ILLINOIS DEPARTMENT OF TRANSPORTATION AS SHOWN ON THE INDEX OF SHEETS IN THE PLANS.

UNDERGROUND UTILITIES

BEFORE STARTING ANY EXCAVATION, THE CONTRACTOR SHALL CALL "JULIE" AT 800-892-0123 FOR FIELD LOCATIONS OF BURIED ELECTRICAL, TELEPHONE AND GAS FACILITIES. (48 HOURS NOTIFICATION IS REQUIRED).

THE LOCATIONS OF THE UNDERGROUND UTILITIES IF SHOWN ON THE PLANS HAVE BEEN OBTAINED BY FIELD SURVEYS AND SEARCHES OF AVAILABLE RECORDS. IT IS BELIEVED THAT THE DATA IS ESSENTIALLY CORRECT, BUT THE VILLAGE OF BROOKFIELD, THE ILLINOIS DEPARTMENT OF TRANSPORTATION AND/OR OTHER OFFICES AND AGENCIES ASSOCIATED WITH THE DEVELOPMENT OF THESE PLANS DO NOT GUARANTEE THEIR ACCURACY OR COMPLETENESS OF THIS INFORMATION. THE CONTRACTOR WILL BE REQUIRED TO VERIFY THE EXACT LOCATION OF EACH FACILITY WITH THE RESPECTIVE UTILITY COMPANY, AND SHALL TAKE DUE CARE IN ALL PHASES OF THE CONSTRUCTION TO PROTECT ANY SUCH FACILITIES WHICH MAY BE AFFECTED BY THE WORK. ANY DAMAGE TO EXISTING UTILITIES SHALL BE REPAIRED AT THE CONTRACTOR'S EXPENSE.

THE CONTRACTOR SHALL COORDINATE CONSTRUCTION ACTIVITIES WITH UTILITY COMPANIES AND THE VILLAGE OF BELLWOOD.

I.D.O.T. STANDARD DRAWINGS

STANDARD NO.	TITLE OR DESCRIPTION
000001-04	STANDARD SYMBOLS, ABBREVIATIONS AND PATTERNS
664001-01	CHAIN LINK FENCE
720001	SIGN PANEL MOUNTING DETAILS
720006-01	SIGN PANEL ERECTION DETAILS
814001-01	HANDHOLES

LEGEND OF SYMBOLS

EXISTING	PROPOSED	DESCRIPTION
		COMBINATION SEWER
		COMBINED RELIEF SEWER
		STORM SEWER
		WATER MAIN
		MANHOLE, TYPE A, 4' DIAMETER
		INLET, TYPE A
		CATCH BASIN
		FIRE HYDRANT
		WATER MAIN VALVE BOX
		WATER SERVICE BOX
		ELECTRIC HANDHOLE
		CURB & GUTTER TO BE REMOVED & REPLACED
		LIGHT STANDARD
		UNDERPASS BRIDGE LIMIT
		FENCE POST
		FENCE
		CONDUIT ATTACHED TO STRUCTURE
		CONDUIT IN TRENCH
		UNDERPASS LUMINAIRE
		JUNCTION BOX
		UNIT DUCT

Drawing file: W:\Projects\0803085 - Prairie Path Impr\Index.dwg May 22, 2007 - 3:45pm

SUMMARY OF QUANTITIES

Code No.	Item	Unit	Total Quantity	SFTY-1B	SFTY-1D	SFTY-1E
20200100	EARTH EXCAVATION	Cu Yd	100	100		
21101615	TOPSOIL, FURNISH AND PLACE, 4"	Sq Yd	650	650		
25000310	SEEDING, CLASS 4	Acre	0.5	0.5		
25100105	MULCH METHOD 1	Acre	0.5	0.5		
42400200	PORTLAND CEMENT CONCRETE SIDEWALK, 5"	Sq Ft	200	200		
44000600	SIDEWALK REMOVAL	Sq Ft	200	200		
66400405	CHAIN LINK FENCE, 7'	Lin Ft	700	700		
66408300	CHAIN LINK GATE, 7'X8' DOUBLE	Each	2	2		
66410300	CHAIN LINK FENCE REMOVAL	Lin Ft	350	350		
67100100	MOBILIZATION	LSum	1	1		
70102620	TRAFFIC CONTROL AND PROTECTION STANDARD 701501	LSum	1	1		
72000100	SIGN PANEL, TYPE I	Sq FT	2	2		
78000100	THERMOPLASTIC PAVEMENT MARKING LETTERS AND SYMBOLS	Sq Ft	32		32	
78000200	THERMOPLASTIC PAVEMENT MARKING LINE, 4	Lin Ft	200		200	
80400100	ELECTRIC SERVICE INSTALLATION	EACH	1			1
81000600	CONDUIT IN TRENCH, 2" DIAMETER GALV STEEL	Lin Ft	10			10
81100600	CONDUIT ATTACHED TO STRUCTURE, 2" DIAMETER GALVANIZED STEEL	Lin Ft	510			510
81300210	JUNCTION BOX, STAINLESS STEEL, ATTACHED TO STRUCTURE, 6X4X4	Each	6			6
81400100	HANDHOLE	Each	2			2
81603050	UNIT DUCT, 600V, 3 1/C No.6 & 1/C No.8 GROUND, (XLP-TYPE USE) 1" DIAMETER, POLYETHYLENE	Lin Ft	537			537
81702415	ELECTRICAL CABLE IN CONDUIT, 600 V, (XLP TYPE USE), 3 1/C No. 6	Lin Ft	510			510
81900200	TRENCH AND BACKFILL FOR ELECTRICAL WORK	Lin Ft	700			700
82107505	UNDERPASS LUMINAIRE, 250 WATT, HIGH PRESSURE SODIUM, ALUMINUM HOUSING	Each	11			11
X0350800	BOLLARDS	Each	4	4		
XX007034	LIGHT POLE, CONCRETE, 15.5 FOOT MOUNTING HEIGHT, POST TOP LUMINAIRE, 120 VOLT, 200 WATT HIGH PRESSURE SODIUM LUMINAIRE AND LAMP	Each	4			4

Drawing file: W:\Projects\08000085 - Profile Path Imprv\Index.dwg Jun 06, 2007 - 2:32pm



♦ Civil Engineers
 ♦ Municipal Consultants
 ♦ Established 1911

9933 Roosevelt Road
 Westchester, Illinois 60154-2780
 Phone: 708/865-0300
 Fax: 708/865-1212

ILLINOIS PRAIRIE PATH IMPROVEMENTS
VILLAGE OF BELLWOOD, ILLINOIS

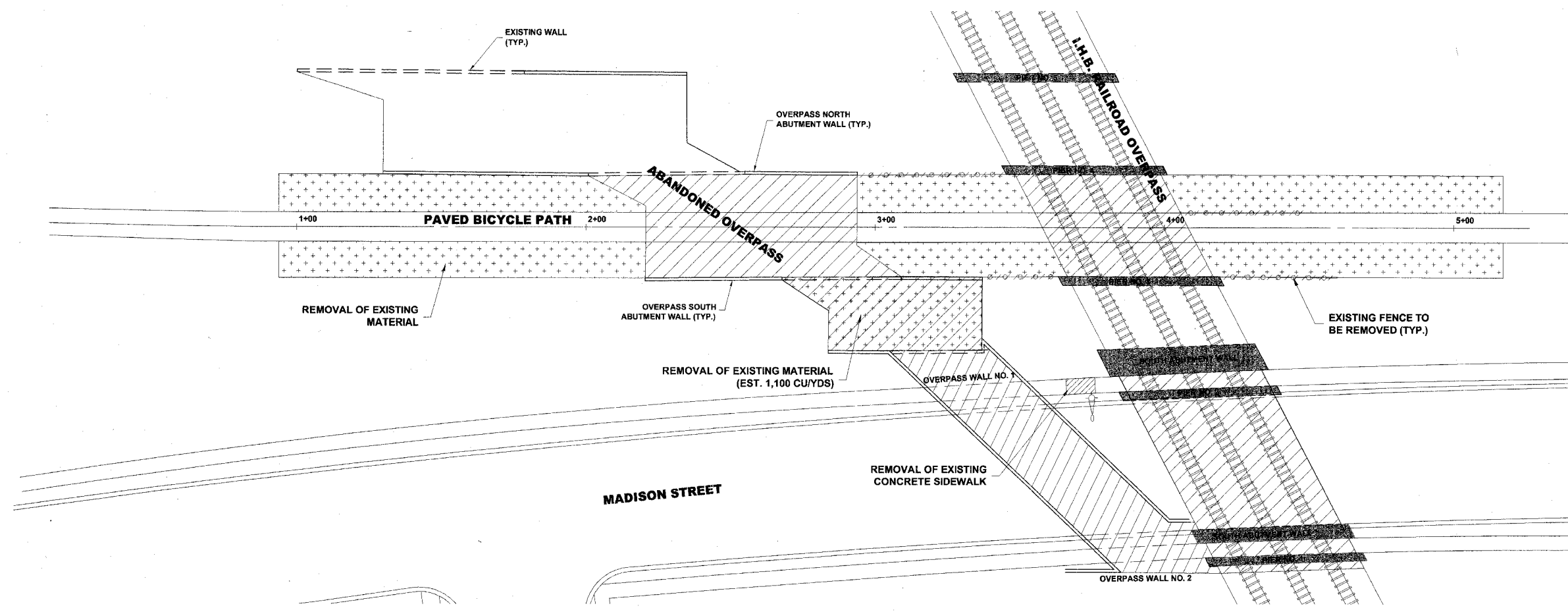
SUMMARY OF QUANTITIES

SCALE:	NONE	SHEET 3 OF 15
DRAWN BY:	MK	
BOOK NO.:	AERIAL	
DATE:	2/09/07	
AS PER IDOT REVIEW	5/31/07	REVISION:
AS PER IDOT REVIEW	5/22/07	
E.H.E. NO.:	080-03-08580	

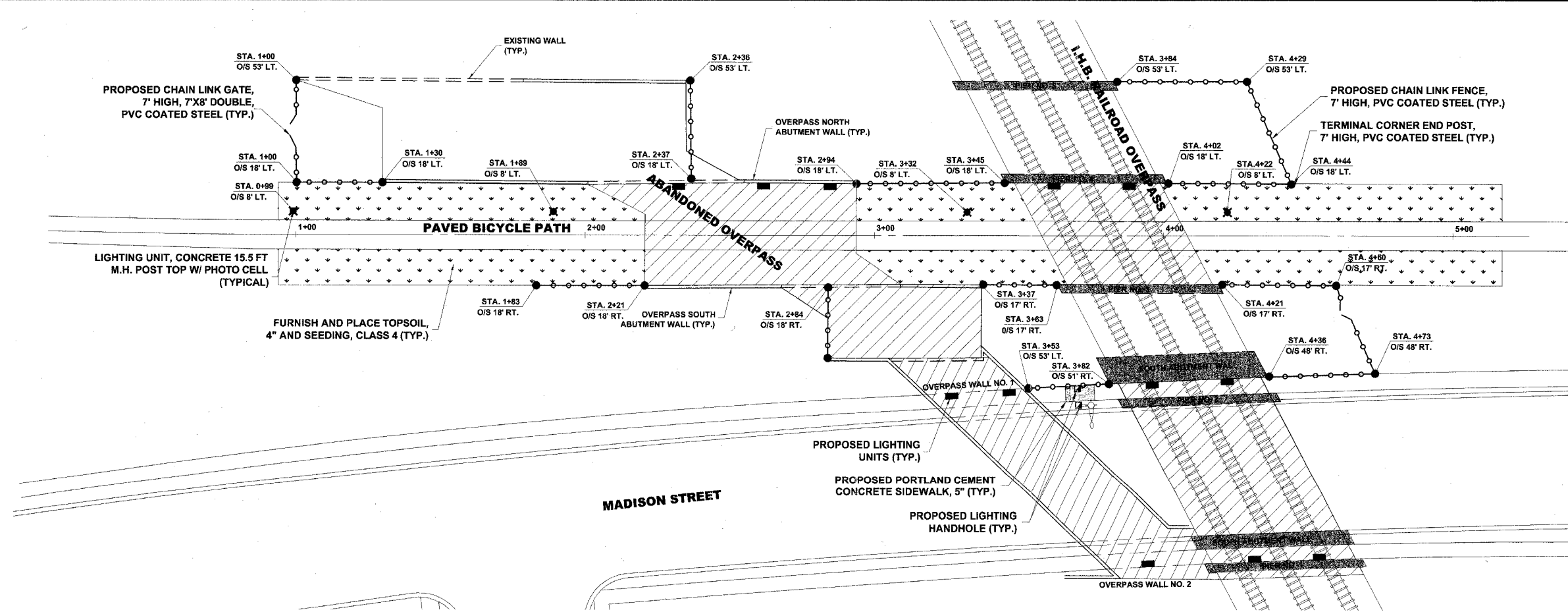
ROUTE NO.	SECTION	COUNTY	TOTAL SHEETS	SHEET NO.
		COOK	15	4

ILLINOIS PROJECT
 VILLAGE SECTION 06-00133-00-BT

CONTRACT NO. 83933



EXISTING TOPOGRAPHY



PROPOSED IMPROVEMENTS

Drawing file: W:\Projects\06003285 - Prairie Path Improvements\Site Plan.dwg May 22, 2007 - 2:31pm

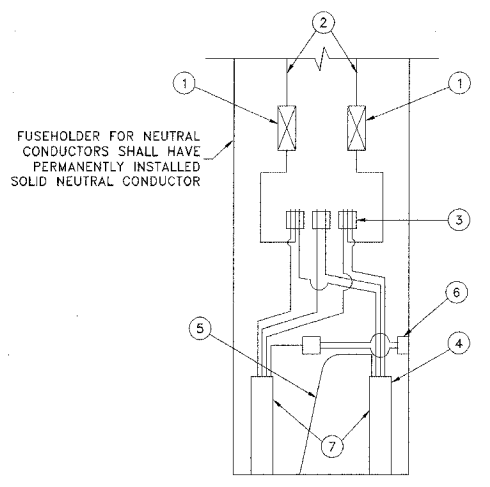


♦ Civil Engineers
 ♦ Municipal Consultants
 ♦ Established 1911
 9933 Roosevelt Road
 Westchester, Illinois 60154-2780
 Phone: 708/865-0300
 Fax: 708/865-1212

**ILLINOIS PRAIRIE PATH IMPROVEMENTS
 VILLAGE OF BELLWOOD, ILLINOIS**

SITE PLAN

SCALE:	1"=20'H.	SHEET 4
DRAWN BY:	MK	
BOOK NO.:	AERIAL	15
DATE:	2/09/07	
REVISION:	AS PER IDOT REVIEW 5/22/07	OF
	C.H.E. NO.: 080-03-08580	



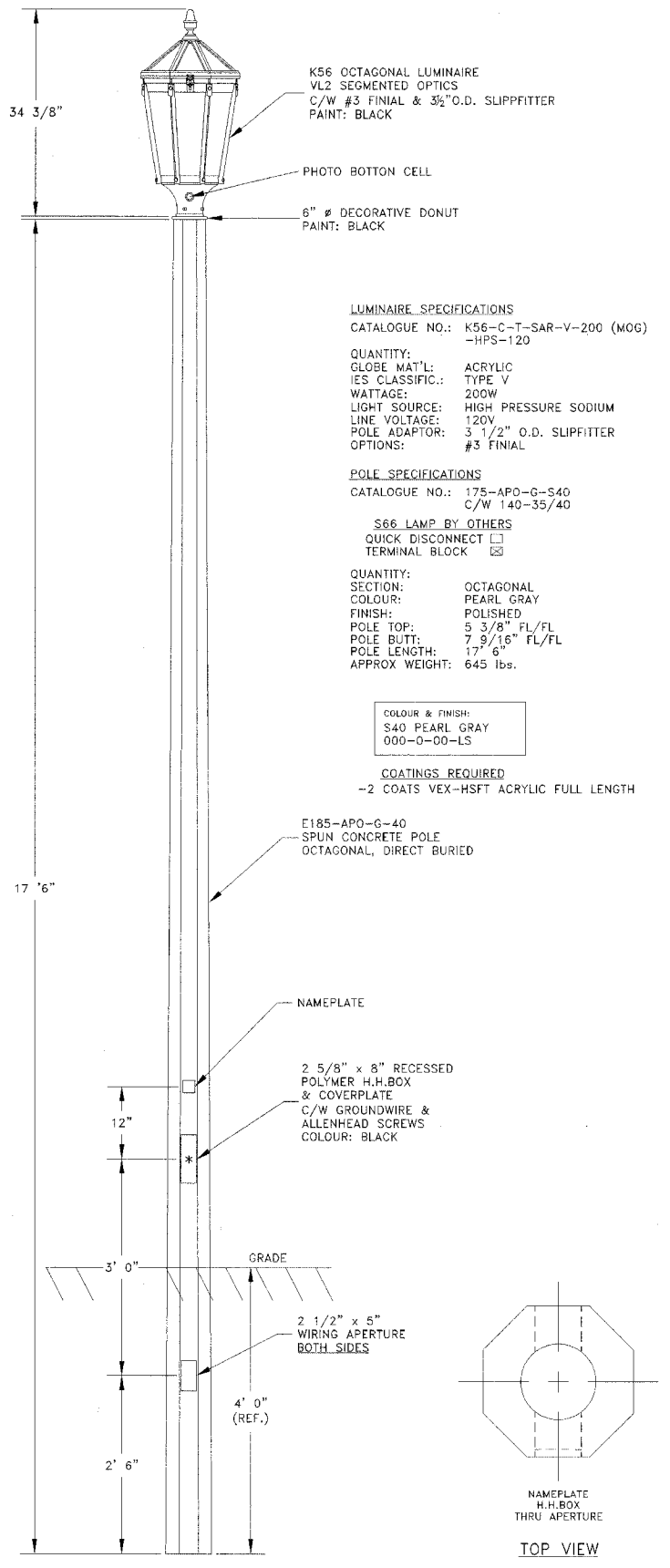
- 1 QUICK DISCONNECT STANDARD 2 POLE SMALL DIMENSION 600 VOLT FUSE HOLDERS WITH BOOTS AND FUSING (SLOW BLOW FUSE AND SOLID SLUG) FUSE SIZE TO BE 3 AMP.
- 2 NO. 10 WIRE TO LUMINAIRE
- 3 MULTIPLE COMPRESSION FITTING
- 4 1-1/4" UNIT DUCT w/3-1/C NO. 4 AND 1/C NO. 8
- 5 NEW NO. 10 GROUND WIRE TO GROUND ROD WITH EXOTHERMIC WELD
- 6 GROUND LUG
- 7 SEAL ENDS OF UNIT DUCT AGAINST THE ENTRANCE OF WATER

NOTE: ALLOW 30" LOOP OF CABLES TO INSURE SUFFICIENT SLACK FOR WITHDRAWAL OF THE CONNECTORS OUTSIDE OF THE POLE HANDHOLE.

POLE HANDHOLE WIRING DIAGRAM

ILLUMINATION GENERAL NOTES

1. THE LATEST EDITIONS OF THE "STANDARD SPECIFICATIONS FOR ROAD AND BRIDGE CONSTRUCTION" PREPARED BY THE ILLINOIS DEPARTMENT OF TRANSPORTATION AND THE SUPPLEMENTAL "SPECIAL PROVISIONS" SHALL GOVERN ALL WORK ASSOCIATED WITH THIS PROJECT.
2. THE LOCATIONS OF THE UTILITIES AS SHOWN ON THE PLANS ARE APPROXIMATE ONLY AND MUST BE VERIFIED BY EACH RESPECTIVE UTILITY COMPANY. IT SHALL BE THE CONTRACTOR'S RESPONSIBILITY TO NOTIFY ALL THE PUBLIC UTILITY COMPANIES (GAS, ELECTRIC, TELEPHONE, ETC.) PRIOR TO THE COMMENCEMENT OF CONSTRUCTION FOR EXACT FIELD LOCATION OF ALL UTILITIES.
3. SERVICE POLE LOCATIONS AND CONTROL CENTER LOCATIONS ARE APPROXIMATE. ACTUAL LOCATIONS SHALL BE DETERMINED BY THE ENGINEER IN THE FIELD.
4. ALL ITEMS INCLUDED IN THE PLANS OR SPECIAL PROVISIONS NOT APPEARING IN THE SUMMARY OF QUANTITIES SHALL BE CONSIDERED INCIDENTAL TO THE COST OF CONSTRUCTION.
5. GALVANIZED STEEL CONDUIT SHALL BE PLACED UNDER ALL PAVEMENT CROSSINGS OF THE SIZE AND LOCATION INDICATED ON THE PLANS. PAYMENT SHALL BE LIMITED TO THE ACTUAL WIDTH OF PAVEMENT TO BE PUSHED PLUS TWO FEET (2') ON EACH SIDE OF PAVEMENT.
6. ALL CABLE OR CONDUIT SHALL BE AS SHOWN ON THE PLANS UNLESS OTHERWISE DIRECTED BY THE ENGINEER AND SHALL BE AT A BURIAL DEPTH OF THIRTY INCHES (30") BELOW EXISTING GRADES.
7. ANY PERMANENT TYPE PAVEMENT, DRIVEWAY, OR SIDEWALK WHICH MUST BE REMOVED SHALL BE SAW CUT PRIOR TO REPLACEMENT.
8. ALL TRENCHES SHALL BE THOROUGHLY COMPACTED.
9. THE CONTRACTOR SHALL BE REQUIRED TO DISPOSE OF, OFF-SITE, ALL EXCAVATED OR EXCESS MATERIALS DUE TO CONSTRUCTION OPERATIONS, AT HIS EXPENSE. NO PAYMENT SHALL BE MADE FOR THE CONTRACTOR'S EXPENSE TO HAUL OR TRUCK THE MATERIAL TO DISTANT DUMPING SITES.



LUMINAIRE SPECIFICATIONS
 CATALOGUE NO.: K56-C-T-SAR-V-200 (MOG)
 -HPS-120
 QUANTITY:
 GLOBE MAT'L: ACRYLIC
 IES CLASSIFIC.: TYPE V
 WATTAGE: 200W
 LIGHT SOURCE: HIGH PRESSURE SODIUM
 LINE VOLTAGE: 120V
 POLE ADAPTOR: 3 1/2" O.D. SLIPFITTER
 OPTIONS: #3 FINIAL

POLE SPECIFICATIONS
 CATALOGUE NO.: 175-APO-G-S40
 C/W 140-35/40
 S66 LAMP BY OTHERS
 QUICK DISCONNECT
 TERMINAL BLOCK

QUANTITY:
 SECTION: OCTAGONAL
 COLOUR: PEARL GRAY
 FINISH: POLISHED
 POLE TOP: 5 3/8" FL/FL
 POLE BUTT: 7 9/16" FL/FL
 POLE LENGTH: 17' 6"
 APPROX WEIGHT: 645 lbs.

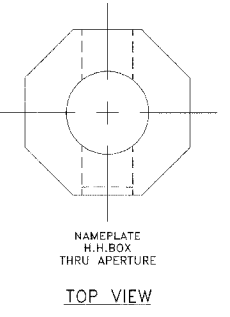
COLOUR & FINISH:
 S40 PEARL GRAY
 000-0-00-LS

COATINGS REQUIRED
 -2 COATS VEX-HSFT ACRYLIC FULL LENGTH

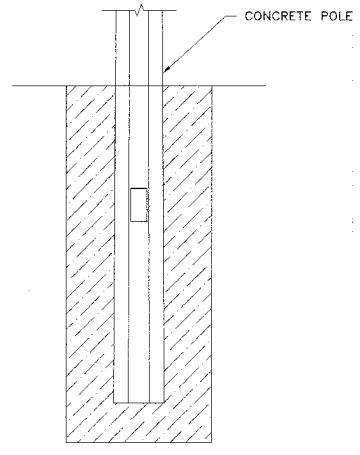
E185-APO-G-40
 SPUN CONCRETE POLE
 OCTAGONAL, DIRECT BURIED

NAMEPLATE
 2 5/8" x 8" RECESSED
 POLYMER H.H.BOX
 & COVERPLATE
 C/W GROUNDWIRE &
 ALLENHEAD SCREWS
 COLOUR: BLACK

2 1/2" x 5"
 WIRING APERTURE
 BOTH SIDES

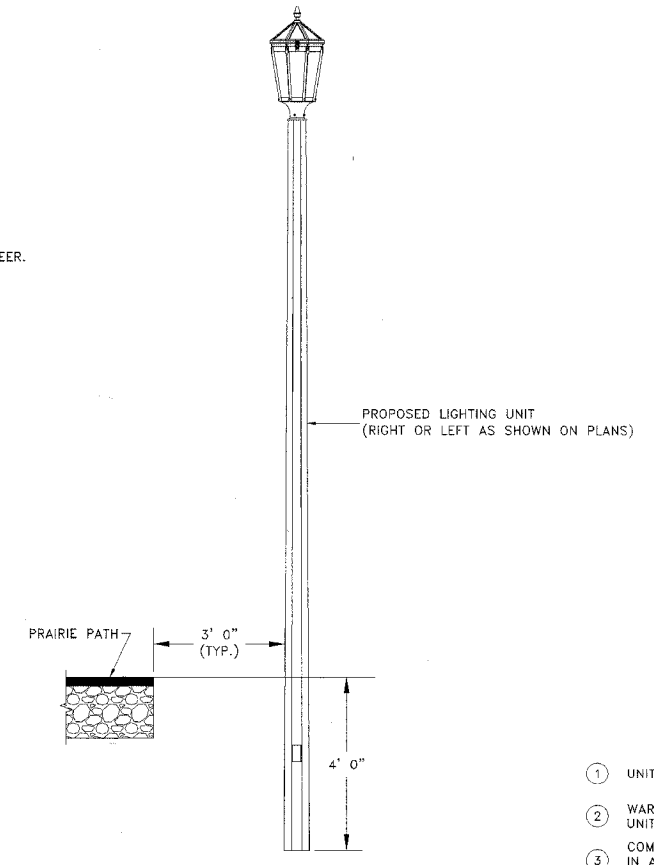


POLE DETAIL

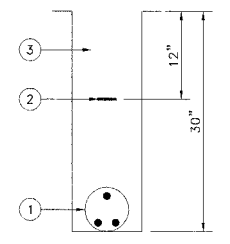


1. AUGER THE SETTING HOLE
2. SET POLE IN HOLE AND PLUMB STRAIGHT
3. BACKFILL WITH CA-16 BACKFILL, TAMPING EVERY 4" TO 6" WITH SHOVEL OR OTHER ACCEPTABLE DEVICE APPROVED BY THE ENGINEER.

FOOTING DETAIL



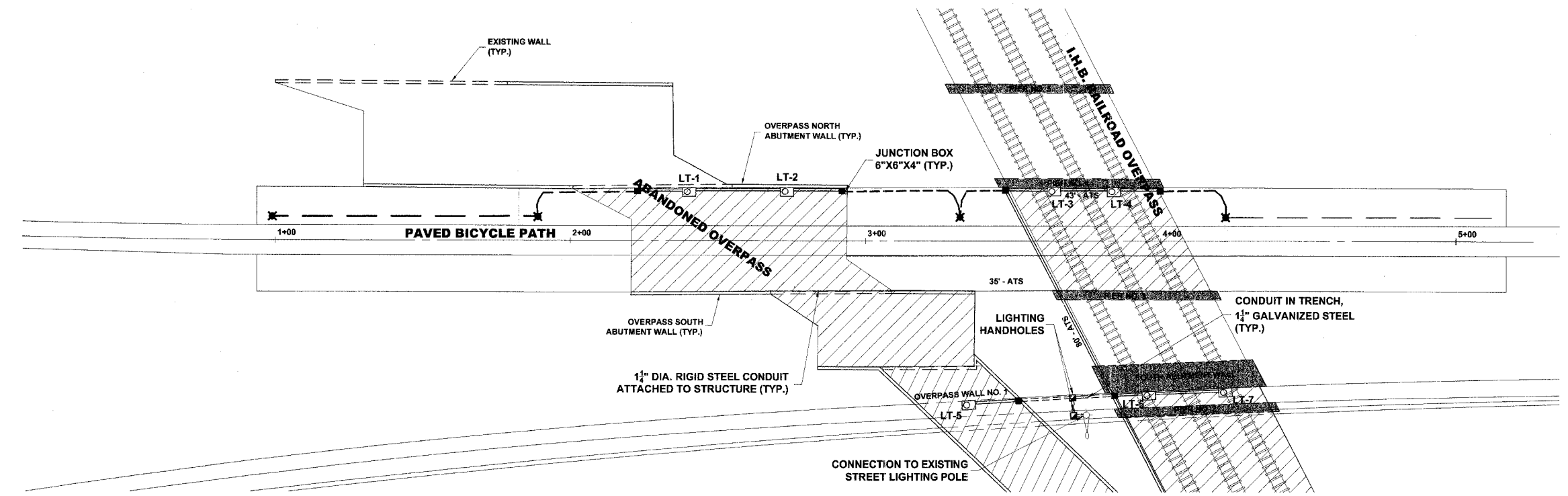
POLE LOCATION DETAIL



- 1 UNIT DUCT AS PER SPECIFICATIONS
- 2 WARNING TAPE INSTALLED ONLY WHEN UNIT DUCT IS INSTALLED BY TRENCHING
- 3 COMPACTED GRANULAR BACKFILL (CA-6) IN AREAS UNDER PAVEMENT. COMPACTED SELECTED BACKFILL IN TURF AREAS.

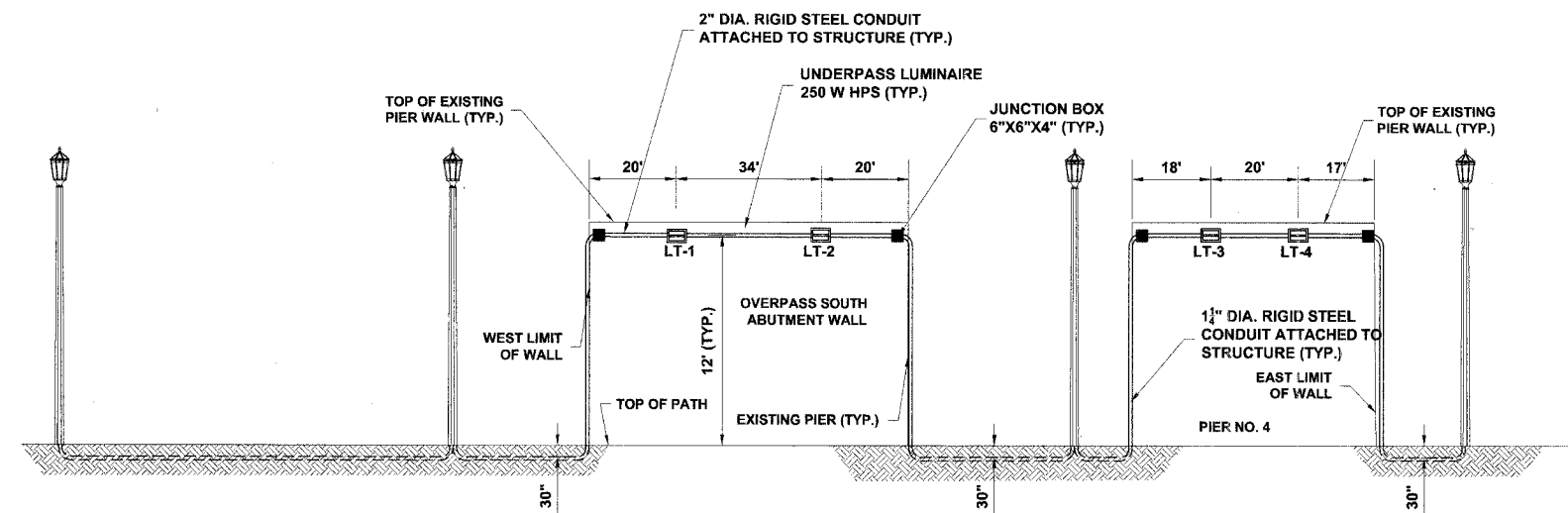
TYPICAL TRENCH DETAIL

Drawing file: W:\Projects\06003285 - Prairie Path Impr\Detail 2.dwg May 22, 2007 - 3:41pm



PLAN

AT OVERPASS NORTH ABUTMENT WALL AND NORTH SIDE OF PIER NO. 4

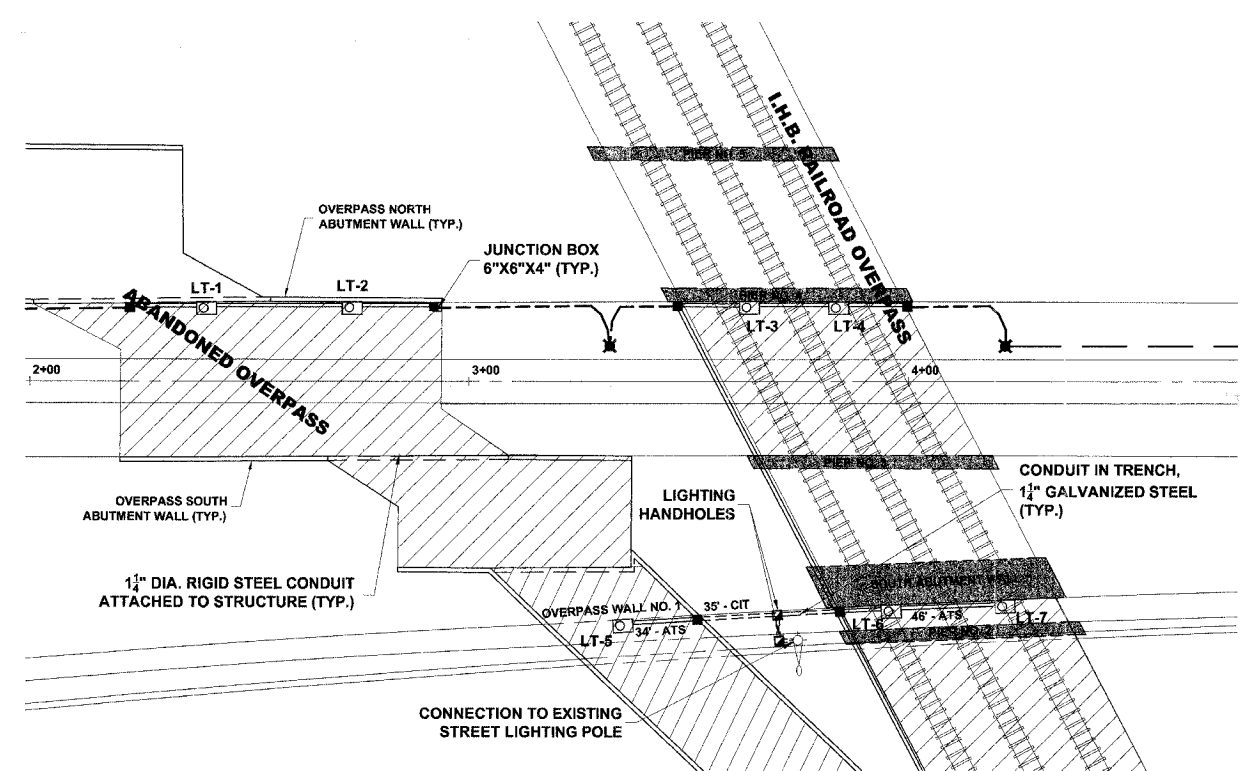
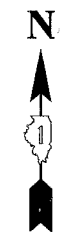


UNDERPASS LIGHTING DETAILS

AT OVERPASS SOUTH ABUTMENT WALL AND NORTH SIDE OF PIER NO. 4

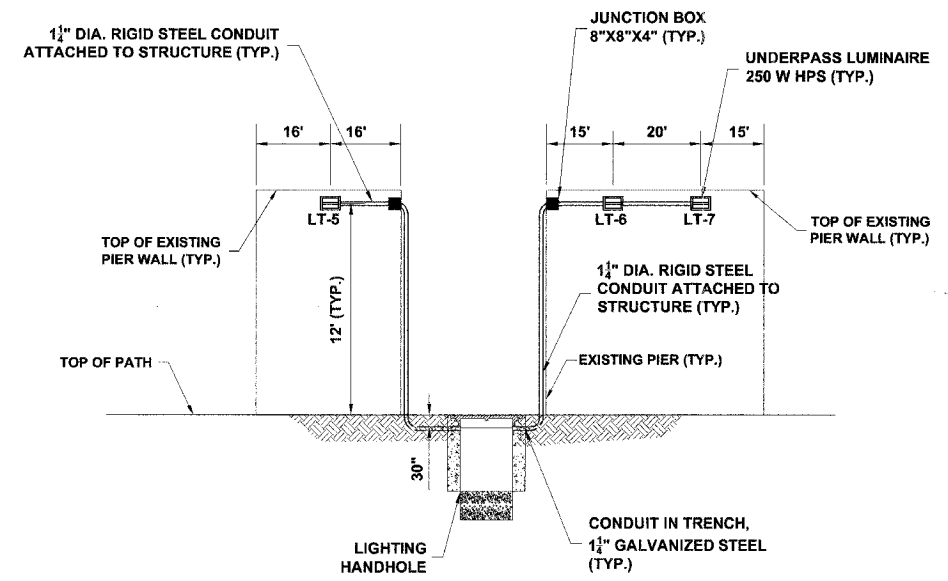
Drawing file: W:\Projects\06003688 - Prairie Path Impr\Site Plan.dwg May 22, 2007 - 2:31pm

ROUTE NO.	SECTION	COUNTY	TOTAL SHEETS	SHEET NO.
		COOK	15	7
ILLINOIS PROJECT				
VILLAGE SECTION 06-00133-00-BT				
CONTRACT NO. 83933				



PLAN

AT SOUTH SIDE OF OVERPASS WALL NO. 1 AND SOUTH SIDE OF SOUTH ABUTMENT WALL



UNDERPASS LIGHTING DETAILS

AT SOUTH SIDE OF OVERPASS WALL NO. 1 AND SOUTH SIDE OF SOUTH ABUTMENT WALL

Drawing file: W:\Projects\06003385 - Prairie Path Improv\Site Plan.dwg May 22, 2007 - 2:31pm



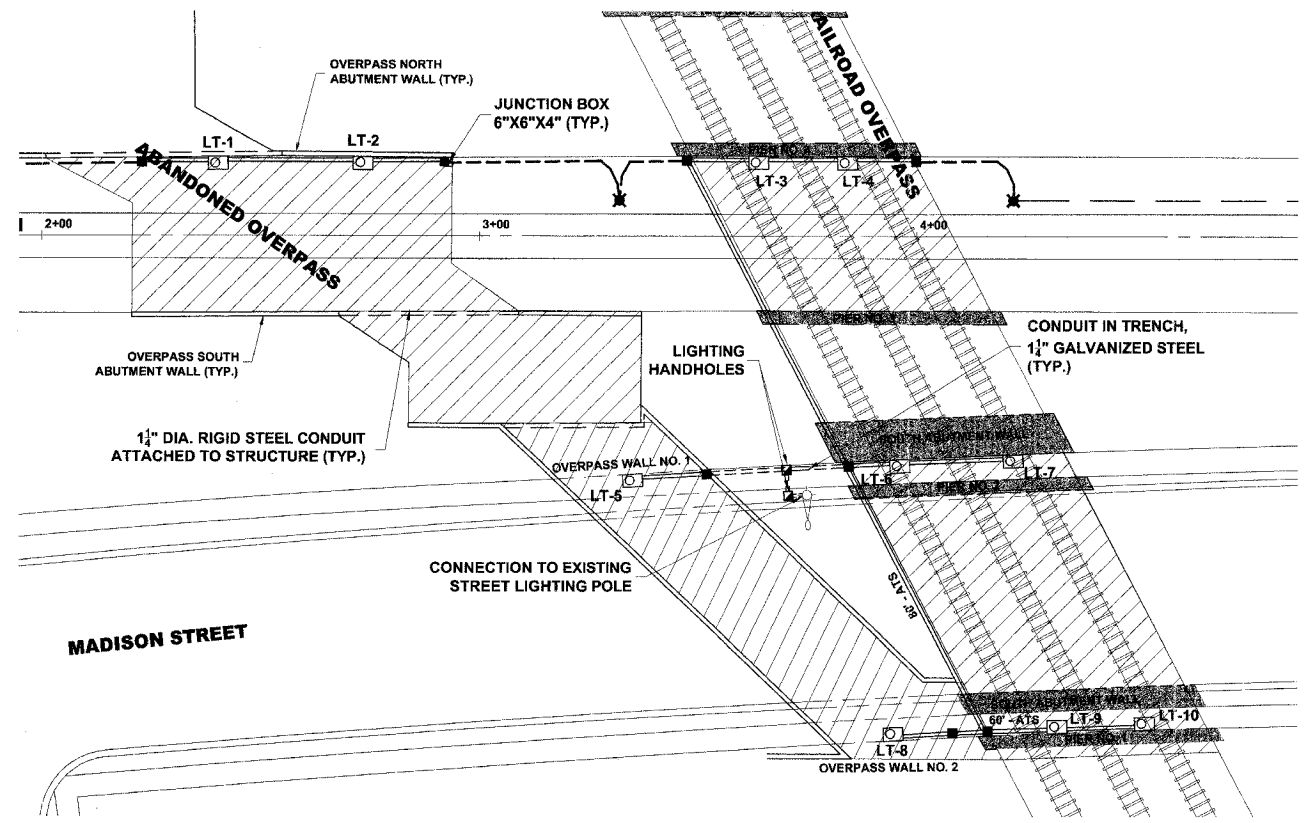
♦ Civil Engineers
 ♦ Municipal Consultants
 ♦ Established 1911
 9933 Roosevelt Road
 Westchester, Illinois 60154-2780
 Phone: 708/865-0300
 Fax: 708/865-1212

**ILLINOIS PRAIRIE PATH IMPROVEMENTS
VILLAGE OF BELLWOOD, ILLINOIS**

OVERPASS LIGHTING PLAN AND LIGHTING DETAILS

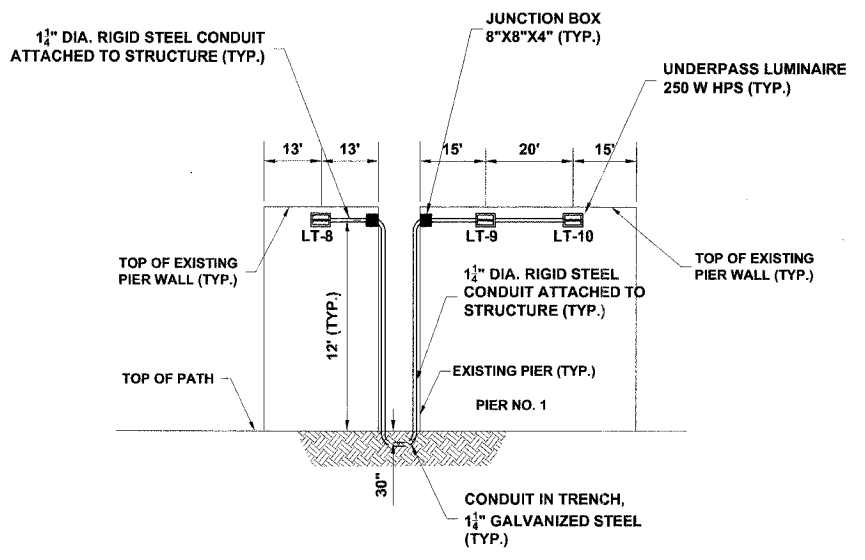
SCALE: 1"=20'H. & 1"=4'V	SHEET
DRAWN BY: MK	7
BOOK NO.: AERIAL	15
AS PER IDOT REVIEW 5/22/07	DATE: 2/09/07
REVISION:	E.H.E. NO.: 080-03-08580

ROUTE NO.	SECTION	COUNTY	TOTAL SHEETS	SHEET NO.
		COOK	15	8
ILLINOIS PROJECT				
VILLAGE SECTION 06-00133-00-BT				
CONTRACT NO. 83933				



PLAN

AT NORTH SIDE OF OVERPASS WALL NO. 2 AND NORTH SIDE OF PIER NO. 1



UNDERPASS LIGHTING DETAILS

AT NORTH SIDE OF OVERPASS WALL NO. 2 AND NORTH SIDE OF PIER NO. 1

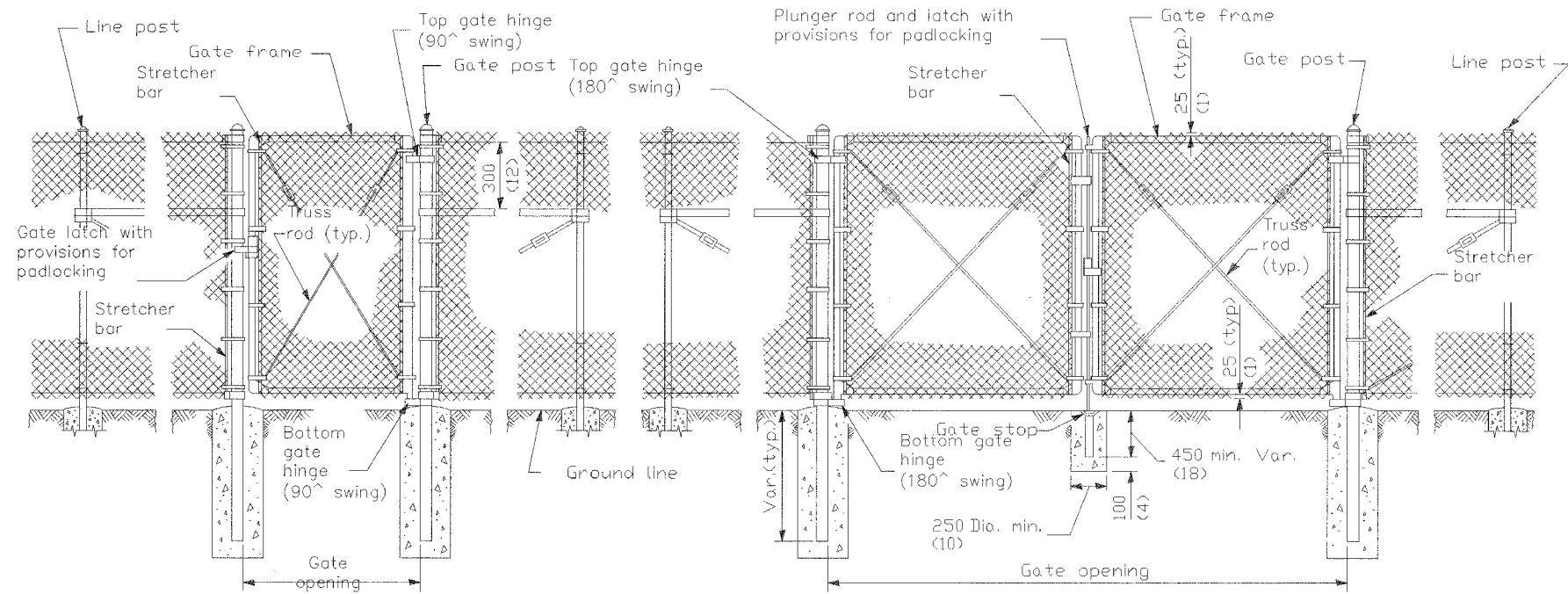
Drawing file: W:\Projects\06003085 - Prairie Path Impr\Site Plan.dwg May 22, 2007 - 2:31pm

	◆ Civil Engineers	SCALE: 1"=50'
	◆ Municipal Consultants	9933 Roosevelt Road
	◆ Established 1911	Westchester, Illinois 60154-2780
		Phone: 708/865-0300 Fax: 708/865-1212

**ILLINOIS PRAIRIE PATH IMPROVEMENTS
VILLAGE OF BELLWOOD, ILLINOIS**

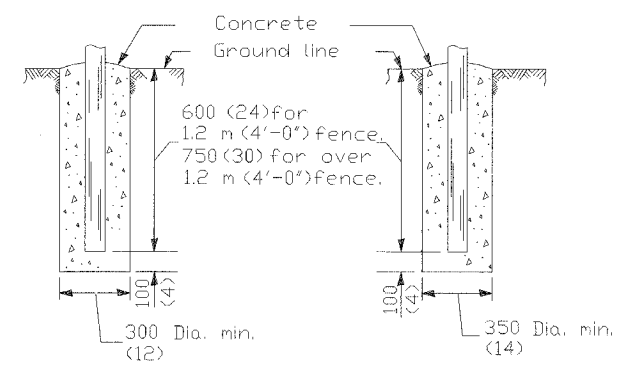
OVERPASS LIGHTING PLAN AND LIGHTING DETAILS

AS PER IDOT REVIEW 5/22/07	SCALE: 1"=20'H. & 1"=4'V	SHEET 8 OF 15
REVISION:	DRAWN BY: MK	
	BOOK NO.: AERIAL	
	DATE: 2/09/07	
	E.H.E. NO.: 080-03-08580	



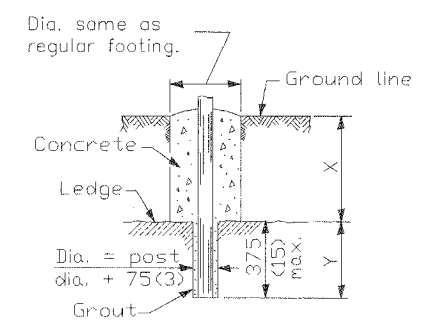
PEDESTRIAN GATE ARRANGEMENT

VEHICLE GATE ARRANGEMENT

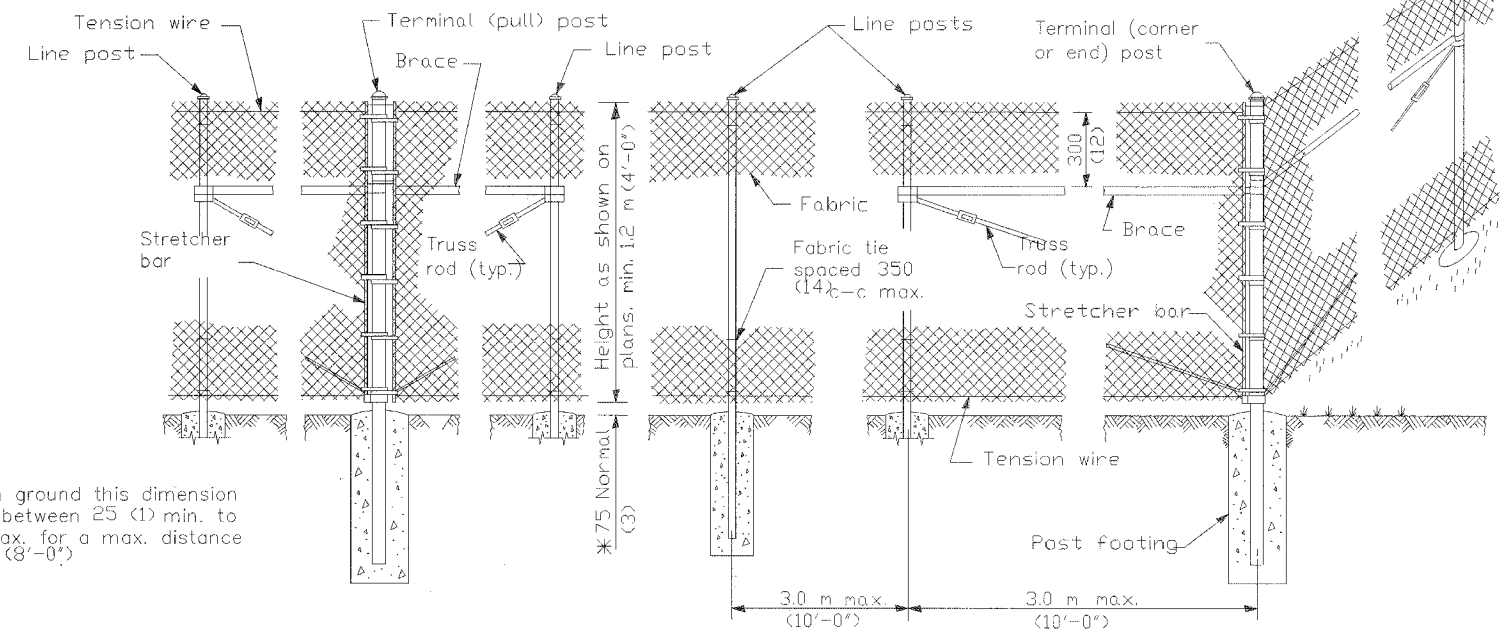


FOOTING FOR LINE POST

FOOTING FOR GATE & TERMINAL POST



FOOTING FOR POST IN ROCK LEDGE



PULL POST ARRANGEMENT

LINE POST ARRANGEMENT

CORNER OR END POST ARRANGEMENT

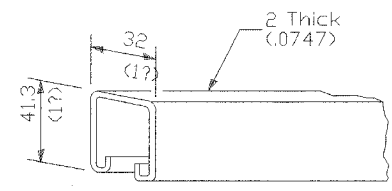
* On uneven ground this dimension may vary between 25 (1) min. to 125 (5) max. for a max. distance of 2.4 m (8'-0").

GENERAL NOTES

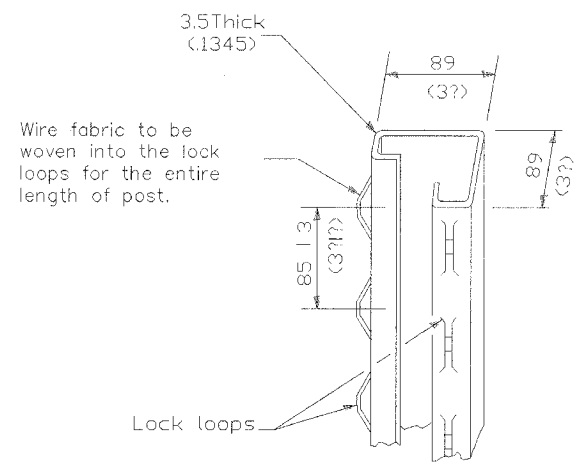
Pull posts shall be placed at locations determined by the Engineer. They shall be placed at 200 m (660') intervals between posts to which the ends of the fabric are clamped or midway between such posts when the distance is less than 400 m (1320') and greater than 200 m (660').
 X + Y shall not exceed 600 mm (24"), 750 mm (30") or 900 mm (36"), as applicable. When X is 0 (0) to 225 mm (9"), 380 mm (15"), or 525 mm (21"), Y = 375 mm (15"), and the post shall be shortened as required. When X exceeds 225 mm (9"), 380 mm (15"), or 525 mm (21"), Y shall be decreased correspondingly.

Drawing file: W:\Projects\08003050 - Prairie Path Impr\DOT STANDARDS.dwg May 22, 2007 - 3:38pm

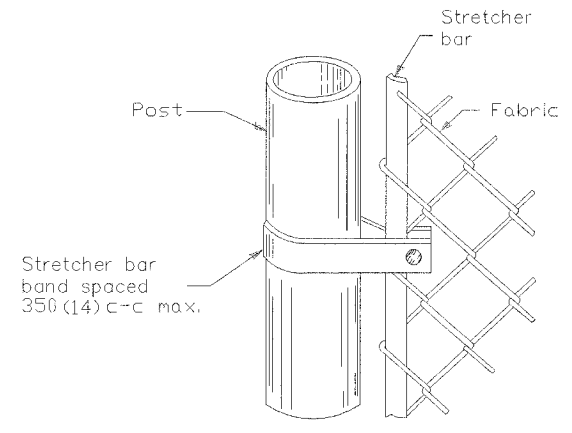
<p>HANCOCK ENGINEERING Civil Engineers Municipal Consultants Established 1911</p>	<p>9933 Roosevelt Road Westchester, Illinois 60154-2700 Phone: 708/965-0300 Fax: 708/965-1212</p>		<p>ILLINOIS DEPARTMENT OF TRANSPORTATION</p>																	
	<p>REVISIONS</p> <table border="1"> <thead> <tr> <th>NAME</th> <th>DATE</th> </tr> </thead> <tbody> <tr> <td>M. DE YOUNG</td> <td>06/13/90</td> </tr> <tr> <td>M. DE YOUNG</td> <td>07/03/90</td> </tr> <tr> <td>M. DE YOUNG</td> <td>3/27/92</td> </tr> <tr> <td>R. SHAH</td> <td>09/09/94</td> </tr> <tr> <td>R. SHAH</td> <td>10/25/94</td> </tr> <tr> <td>A. ABBAS</td> <td>03/21/97</td> </tr> <tr> <td>M. GOMEZ</td> <td>04/06/01</td> </tr> </tbody> </table>		NAME	DATE	M. DE YOUNG	06/13/90	M. DE YOUNG	07/03/90	M. DE YOUNG	3/27/92	R. SHAH	09/09/94	R. SHAH	10/25/94	A. ABBAS	03/21/97	M. GOMEZ	04/06/01	<p>CHAIN LINK FENCE</p>	
	NAME	DATE																		
	M. DE YOUNG	06/13/90																		
	M. DE YOUNG	07/03/90																		
M. DE YOUNG	3/27/92																			
R. SHAH	09/09/94																			
R. SHAH	10/25/94																			
A. ABBAS	03/21/97																			
M. GOMEZ	04/06/01																			
<p>SCALE: NONE</p>		<p>DRAWN BY: CADD</p>																		
<p>DATE: 03/25/02</p>		<p>CHECKED BY:</p>																		



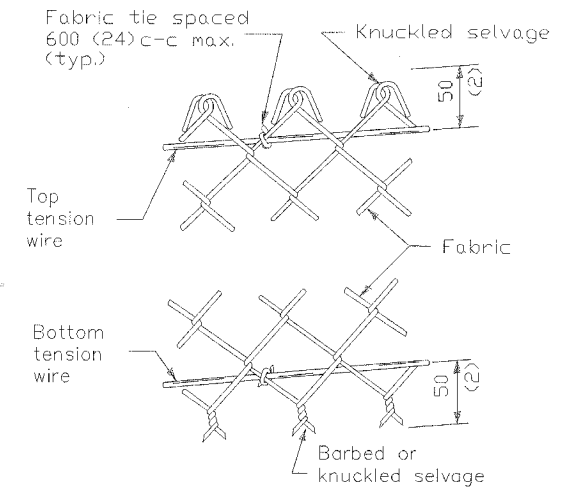
ROLL FORMED SECTION OF BRACE



ROLL FORMED SECTION OF TERMINAL & GATE POST



METHOD OF FASTENING STRETCHER BAR TO POST



METHOD OF TYING FABRIC TO TENSION WIRES

LINE POST		kg/m (lbs./ft.)
Pipe Type A	48.3 O.D. (1.90)	4.05 (2.72)
Pipe Type B	48.3 O.D. (1.90)	3.39 (2.28)
Pipe Type C	48.3 O.D. (1.90)	3.36 (2.26)
H	47.6x41.3 (1.875x1.625)	4.05 (2.72)
	□	2.38 (1.60)
	I	3.42 (2.30)

TERMINAL POST		kg/m (lbs./ft.)
Pipe Type A	60.3 O.D. (2.375)	5.43 (3.65)
Pipe Type B	60.3 O.D. (2.375)	4.63 (3.11)
Pipe Type C	60.3 O.D. (2.375)	4.60 (3.09)
Roll Formed	89.0x89.0 (3?x3?)	See detail
Sq. Tubing	63.5x63.5 (2?x2?)	6.43 (4.32)

HORIZONTAL BRACES		kg/m (lbs./ft.)
Pipe Type A	42.2 O.D. (1.66)	3.38 (2.27)
Pipe Type B	42.2 O.D. (1.66)	2.72 (1.83)
Pipe Type C	42.2 O.D. (1.66)	2.71 (1.82)
H	33.3x38.1 (1.31x1.5)	3.35 (2.25)
Roll Formed	41.3x31.8 (1?x1?)	See detail

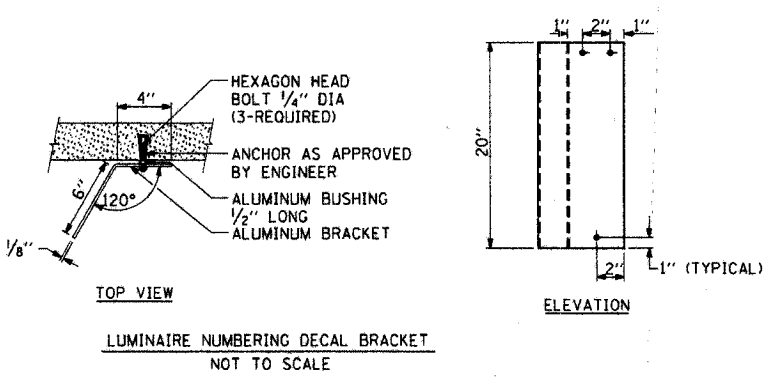
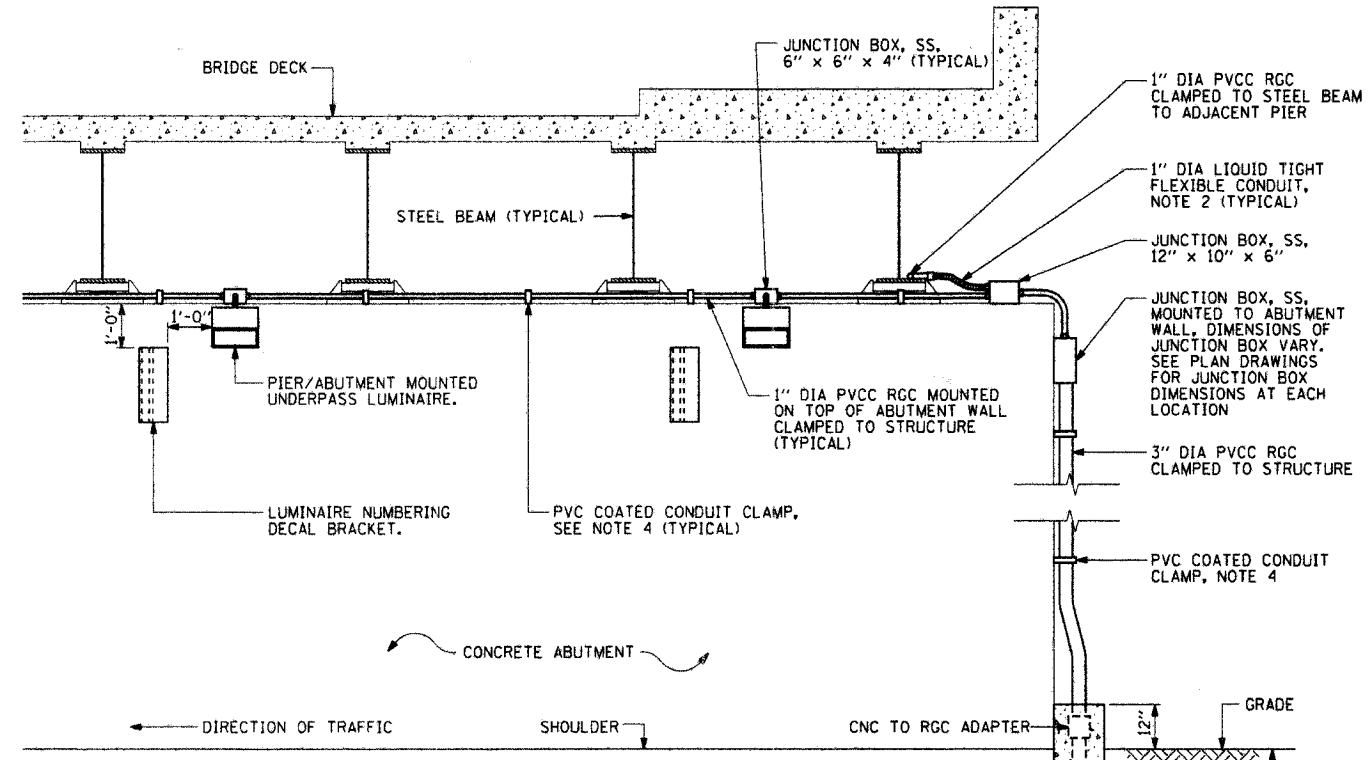
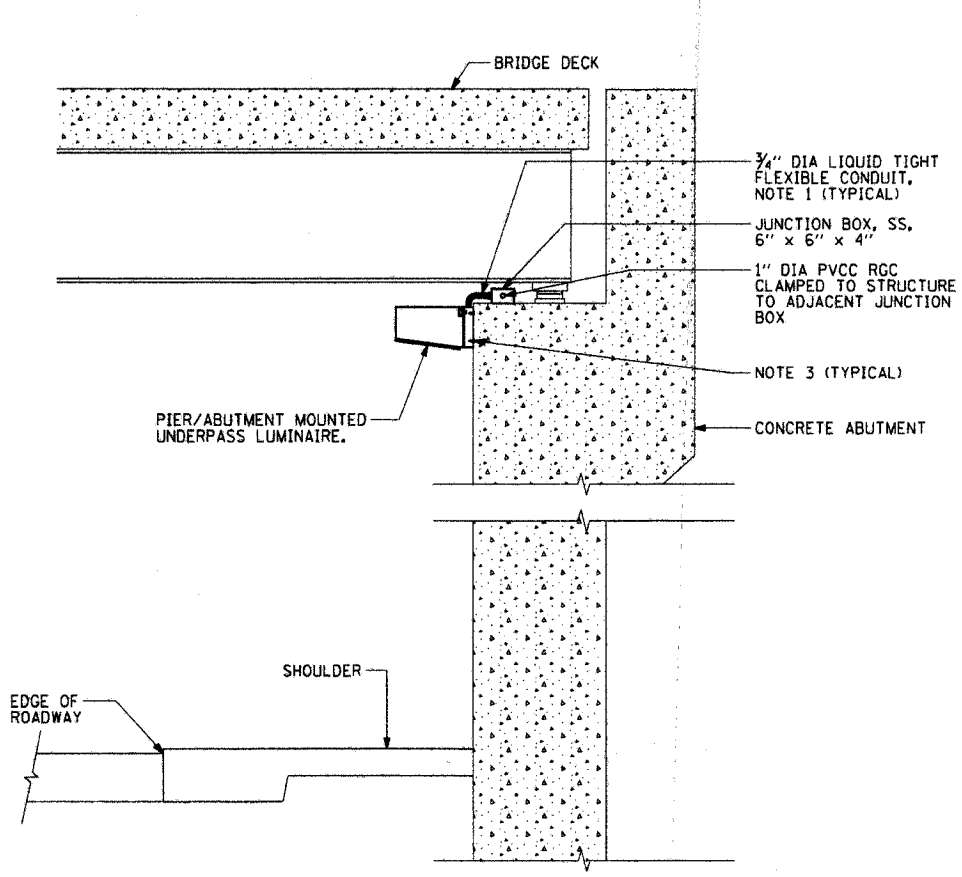
GATE FRAMES		kg/m (lbs./ft.)
Pipe Type A	42.2 O.D. (1.66)	3.38 (2.27)
Pipe Type B	42.2 O.D. (1.66)	2.72 (1.83)
Pipe Type C	42.2 O.D. (1.66)	2.71 (1.82)

GATE POSTS *							
Gate Opening * m (ft.)		Pipe Type A		Sq. Tubing	Pipe Type B		
Single	Double	Size (O.D.)	kg/m (lbs./ft.)	Size	kg/m (lbs./ft.)	Size (O.D.)	kg/m (lbs./ft.)
Up to 1.2 (4)	Up to 2.5 (8)	60.3 (2.375)	5.43 (3.65)	63.5 (2.5)	6.43 (4.32)	60.3 (2.375)	4.63 (3.11)
Over 1.2 to 2.5 (4) (8)	Over 2.5 to 5.0 (8) (16)	73.0 (2.875)	8.62 (5.79)	76.2 (3)	8.60 (5.78)	73.0 (2.875)	6.91 (4.64)
Over 2.5 to 3.6 (8) (12)	Over 5.0 to 7.4 (16) (24)	89.0 (3.5)	11.28 (7.58)	76.2 (3)	13.10 (8.80)	89.0 (3.5)	8.49 (5.707)

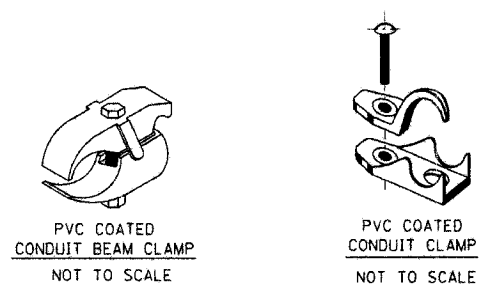
* The 89.0 x 89.0 (3? x 3?) roll formed section as detailed may be used as gate posts for single gate up to 1.8 m (6') and double gate up to 3.6 m (12').

Drawing File: W:\Projects\06030306 - Prairie Path.mpr\1001 STAMPED.dwg May 22, 2007 - 3:51pm

<p>HANCOCK ENGINEERING</p> <p>◆ Civil Engineers ◆ Municipal Consultants ◆ Established 1911</p> <p>9933 Roosevelt Road Westchester, Illinois 60154-2780 Phone: 708/865-8390 Fax: 708/865-1211</p>	<p>REVISIONS</p> <table border="1"> <tr> <th>NAME</th> <th>DATE</th> </tr> <tr> <td>M. DE YOUNG</td> <td>06/13/90</td> </tr> <tr> <td>M. DE YOUNG</td> <td>07/03/90</td> </tr> <tr> <td>M. DE YOUNG</td> <td>3/27/92</td> </tr> <tr> <td>R. SHAH</td> <td>09/09/94</td> </tr> <tr> <td>R. SHAH</td> <td>10/25/94</td> </tr> <tr> <td>A. ABBAS</td> <td>03/21/97</td> </tr> <tr> <td>M. GOMEZ</td> <td>04/06/01</td> </tr> </table>		NAME	DATE	M. DE YOUNG	06/13/90	M. DE YOUNG	07/03/90	M. DE YOUNG	3/27/92	R. SHAH	09/09/94	R. SHAH	10/25/94	A. ABBAS	03/21/97	M. GOMEZ	04/06/01	<p>ILLINOIS DEPARTMENT OF TRANSPORTATION</p> <p>CHAIN LINK FENCE</p>
	NAME	DATE																	
	M. DE YOUNG	06/13/90																	
	M. DE YOUNG	07/03/90																	
	M. DE YOUNG	3/27/92																	
	R. SHAH	09/09/94																	
R. SHAH	10/25/94																		
A. ABBAS	03/21/97																		
M. GOMEZ	04/06/01																		
<p>SCALE: NONE</p> <p>DATE: 03/25/02</p>		<p>DRAWN BY: CADD</p> <p>CHECKED BY:</p>																	
<p>E.H.E. PROJECT NO. 080-03-085</p>																			



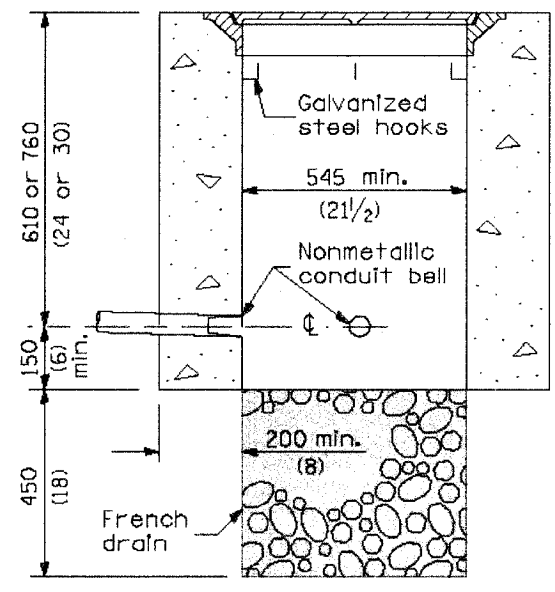
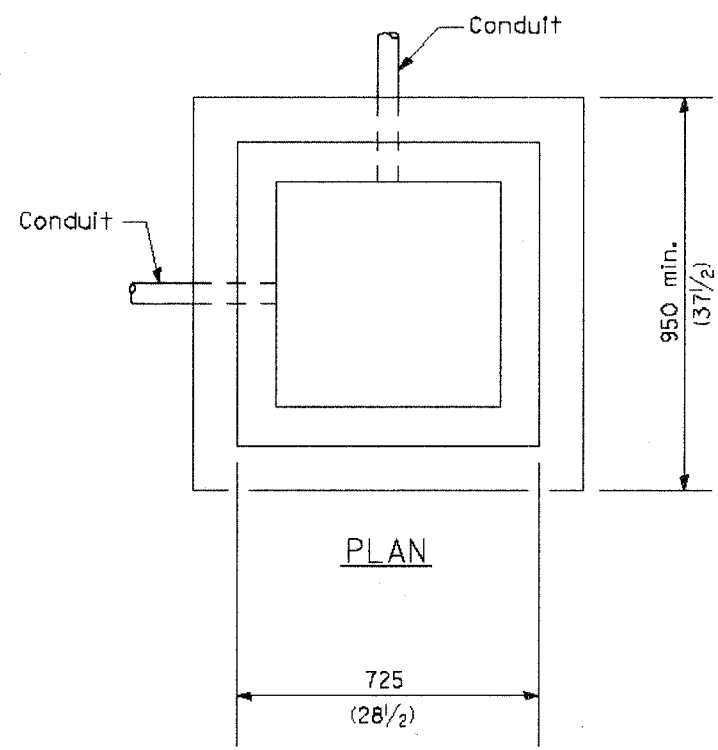
TYPICAL PIER / ABUTMENT MOUNTED UNDERPASS LIGHTING INSTALLATION DETAILS



- NOTES:**
1. LIQUID TIGHT FLEXIBLE METAL CONDUIT, MAXIMUM LENGTH 6'-0", TYPICAL FOR EACH INSTANCE AS SHOWN. PROVIDE PVC COATED RIGID GALVANIZED STEEL CONDUIT AS REQUIRED NOT TO EXCEED 6'-0" OF FLEXIBLE LIQUID TIGHT METAL CONDUIT. LIQUID TIGHT FLEXIBLE METAL CONDUIT WILL BE INCLUDED IN THE COST OF THE CONDUIT ATTACHED TO STRUCTURE, OF THE CORRESPONDING DIA., GALVANIZED STEEL, PVC COATED PAY ITEM EXCEPT THAT THE COST OF THE 7/8" DIA. RIGID STEEL CONDUIT AND 3/4" DIA. FLEXIBLE CONDUIT SHALL BE INCLUDED IN THE LUMINAIRE INSTALLATION.
 2. UNDERPASS LUMINAIRE MOUNTED TO FACE OF PIER OR ABUTMENT WALL. MOUNTING HEIGHT OF 1" BELOW THE TOP OF PIER OR ABUTMENT WALL TYPICAL FOR ALL PIER/ABUTMENT MOUNTED UNDERPASS LUMINAIRES UNLESS OTHERWISE NOTED.
 3. EXPANSION ANCHOR, POWDER ACTUATED FASTENERS WILL NOT BE ALLOWED. EXPANSION ANCHOR MUST BE SIZED IN ACCORDANCE WITH MANUFACTURERS REQUIREMENTS.
 4. SECURE THE CONDUIT WITH PVC COATED CONDUIT CLAMPS OR CONDUIT BEAM CLAMPS AS SHOWN AT 5'-0" INTERVALS FOR LATERALS AND WITHIN 2'-0" MAXIMUM FROM ANY JUNCTION BOX, FLEXIBLE CONDUIT, OR CHANGE IN DIRECTION. ALL PVC COATED CONDUIT CLAMPS OR BEAM CLAMPS SHALL BE INCLUDED WITH THE COST OF THE "CONDUIT ATTACHED TO STRUCTURE, OF THE CORRESPONDING DIA., GALVANIZED STEEL, PVC COATED" PAY ITEM.
 5. THE CONCRETE ENCASED CONDUIT TRANSITION SHALL BE INCLUDED IN THE COST OF THE GALVANIZED RIGID STEEL CONDUIT PAY ITEMS.
 6. ALL CONDUIT ATTACHED TO STRUCTURE SHALL BE PVC COATED RIGID STEEL CONDUIT (PVCC RGC) TYPICAL.

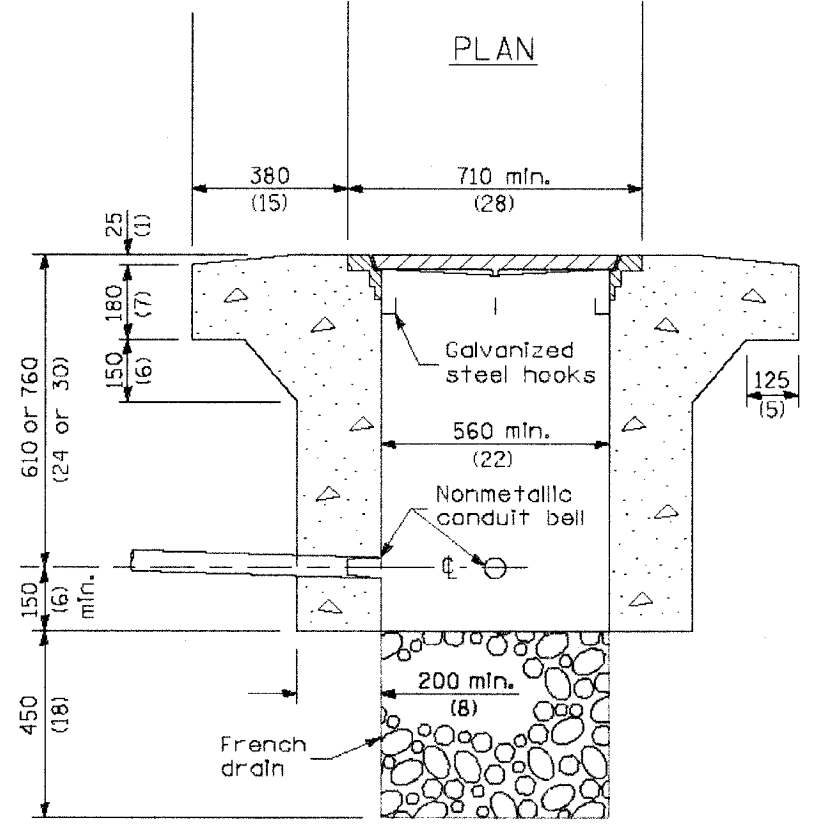
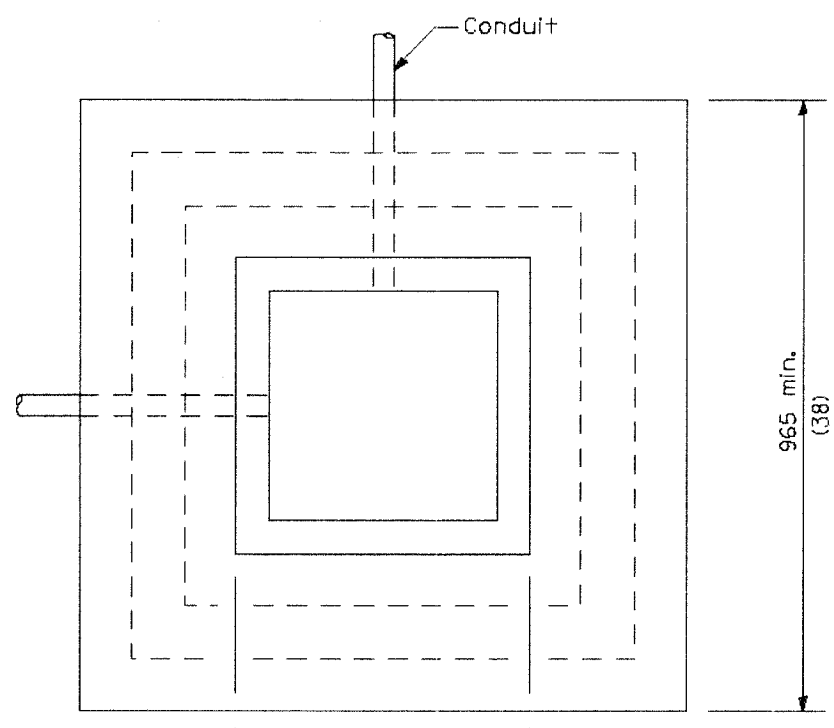
<p>HANCOCK ENGINEERING</p> <p>◆ Civil Engineers ◆ Municipal Consultants ◆ Established 1911</p> <p>9933 Roosevelt Road Westchester, Illinois 60154-2780 Phone: 708/865-4366 Fax: 708/865-1212</p>	<p>REVISIONS</p> <table border="1"> <thead> <tr> <th>NAME</th> <th>DATE</th> </tr> </thead> <tbody> <tr> <td>M. DE YOUNG</td> <td>06/13/90</td> </tr> <tr> <td>M. DE YOUNG</td> <td>07/03/90</td> </tr> <tr> <td>M. DE YOUNG</td> <td>3/27/92</td> </tr> <tr> <td>R. SHAH</td> <td>09/09/94</td> </tr> <tr> <td>R. SHAH</td> <td>10/25/94</td> </tr> <tr> <td>A. ABBAS</td> <td>03/21/97</td> </tr> <tr> <td>M. GOMEZ</td> <td>04/06/01</td> </tr> </tbody> </table>	NAME	DATE	M. DE YOUNG	06/13/90	M. DE YOUNG	07/03/90	M. DE YOUNG	3/27/92	R. SHAH	09/09/94	R. SHAH	10/25/94	A. ABBAS	03/21/97	M. GOMEZ	04/06/01	<p>ILLINOIS DEPARTMENT OF TRANSPORTATION</p> <p>PIER/ABUTMENT MOUNTED UNDERPASS LUMINAIRE INSTALLATION DETAILS</p>
	NAME	DATE																
M. DE YOUNG	06/13/90																	
M. DE YOUNG	07/03/90																	
M. DE YOUNG	3/27/92																	
R. SHAH	09/09/94																	
R. SHAH	10/25/94																	
A. ABBAS	03/21/97																	
M. GOMEZ	04/06/01																	
<p>SCALE: NONE</p> <p>DATE: 03/25/02</p>	<p>DRAWN BY: CADD</p> <p>CHECKED BY:</p>	<p>E.H.E. PROJECT NO. 080-03-085</p>																

Drawing file: W:\Projects\0803085 - Profile Path: Inven\DOT STAM03080.dwg May 22, 2007 - 3:40pm



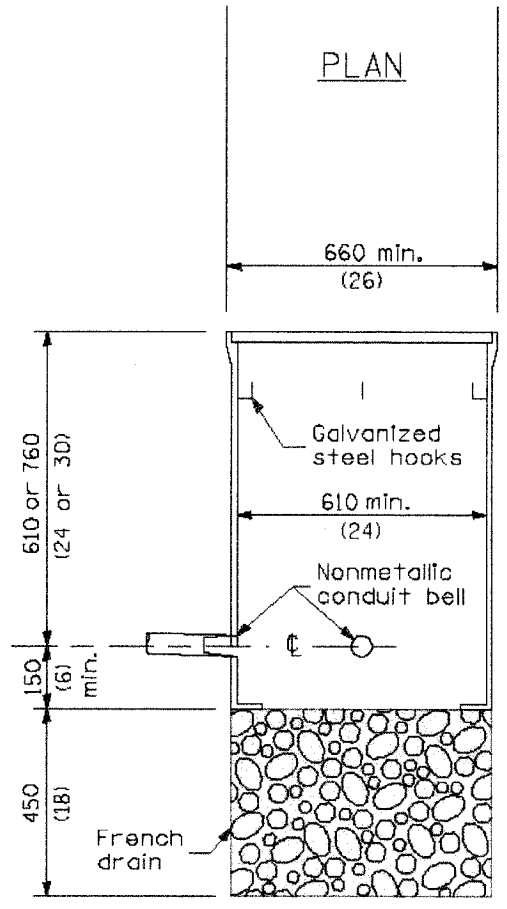
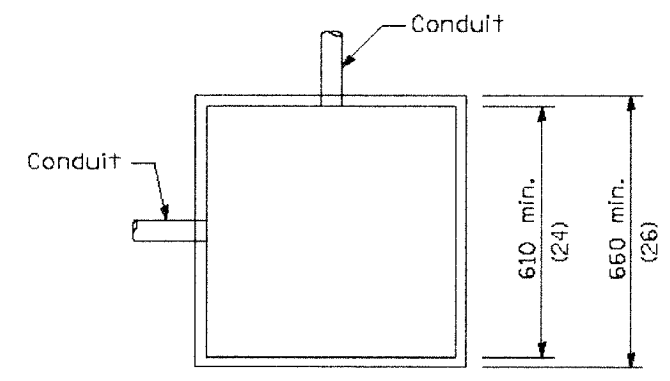
ELEVATION

PORTLAND CEMENT CONCRETE



ELEVATION

PORTLAND CEMENT CONCRETE
HEAVY DUTY



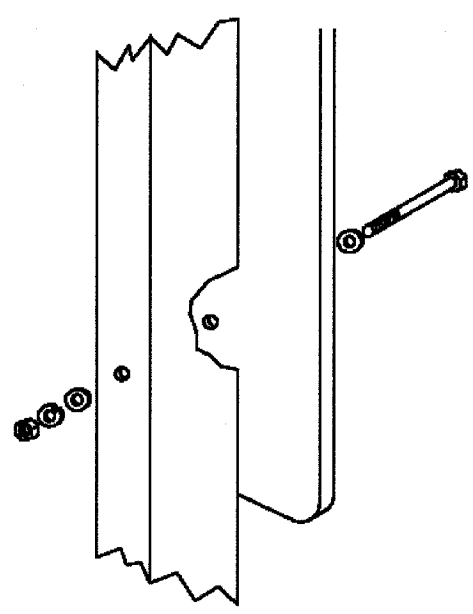
ELEVATION

COMPOSITE CONCRETE

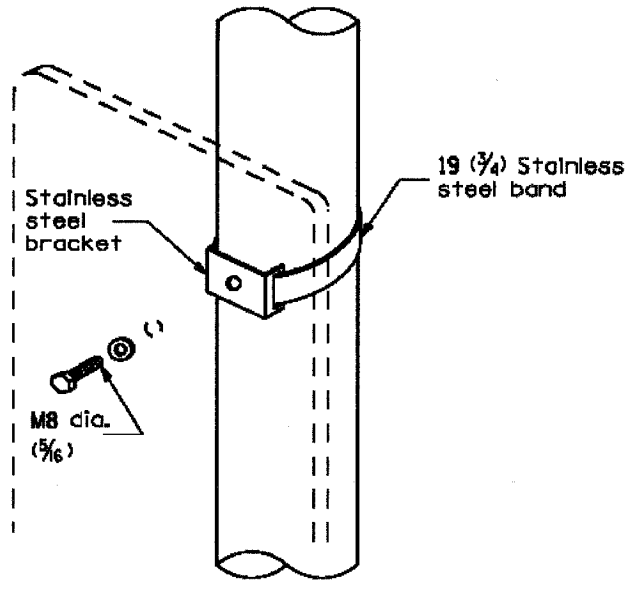
All dimensions are in millimeters (inches) unless otherwise shown.

Drawing File: W:\Projects\08032385 - Prairie Path Imp\DOT STANDBO.dwg May 21, 2007 - 3:40pm

<p>HANCOCK ENGINEERING</p> <p>◆ Civil Engineers ◆ Municipal Consultants ◆ Established 1911</p> <p>993 Roosevelt Road Westchester, Illinois 60154-2788 Phone: 708/865-0300 Fax: 708/865-1212</p>	<p>REVISIONS</p> <table border="1"> <thead> <tr> <th>NAME</th> <th>DATE</th> </tr> </thead> <tbody> <tr> <td>M. DE YOUNG</td> <td>06/13/90</td> </tr> <tr> <td>M. DE YOUNG</td> <td>07/03/90</td> </tr> <tr> <td>M. DE YOUNG</td> <td>3/27/92</td> </tr> <tr> <td>R. SHAH</td> <td>09/09/94</td> </tr> <tr> <td>R. SHAH</td> <td>10/25/94</td> </tr> <tr> <td>A. ABBAS</td> <td>03/21/97</td> </tr> <tr> <td>M. GOMEZ</td> <td>04/06/01</td> </tr> </tbody> </table>	NAME	DATE	M. DE YOUNG	06/13/90	M. DE YOUNG	07/03/90	M. DE YOUNG	3/27/92	R. SHAH	09/09/94	R. SHAH	10/25/94	A. ABBAS	03/21/97	M. GOMEZ	04/06/01	<p>ILLINOIS DEPARTMENT OF TRANSPORTATION</p> <p>PORTLAND CEMENT CONCRETE/COMPOSITE CONCRETE DETAILS</p>
	NAME	DATE																
M. DE YOUNG	06/13/90																	
M. DE YOUNG	07/03/90																	
M. DE YOUNG	3/27/92																	
R. SHAH	09/09/94																	
R. SHAH	10/25/94																	
A. ABBAS	03/21/97																	
M. GOMEZ	04/06/01																	
<p>SCALE: NONE</p> <p>DATE: 03/25/02</p>	<p>DRAWN BY: CADD</p> <p>CHECKED BY:</p>	<p>E.H.E. PROJECT NO. 080-03-085</p>																

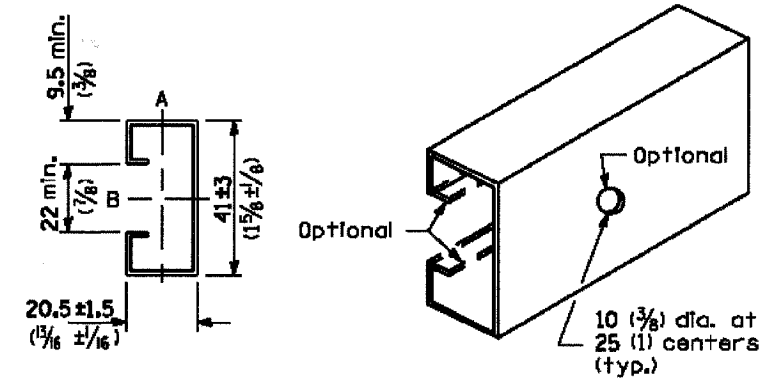


Sign panel 900 (36) wide or less

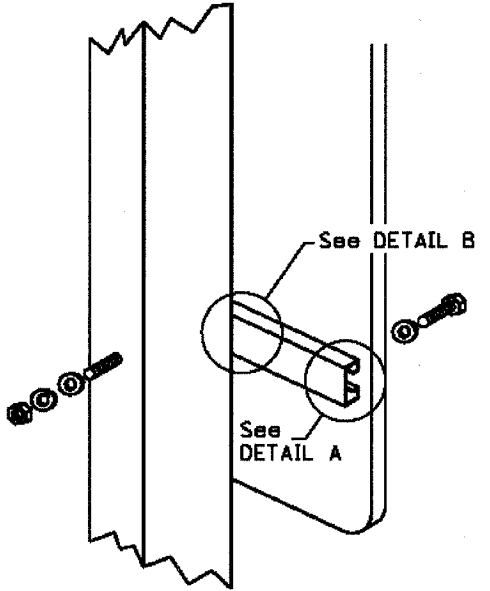


Sign panel 900 (36) wide or less

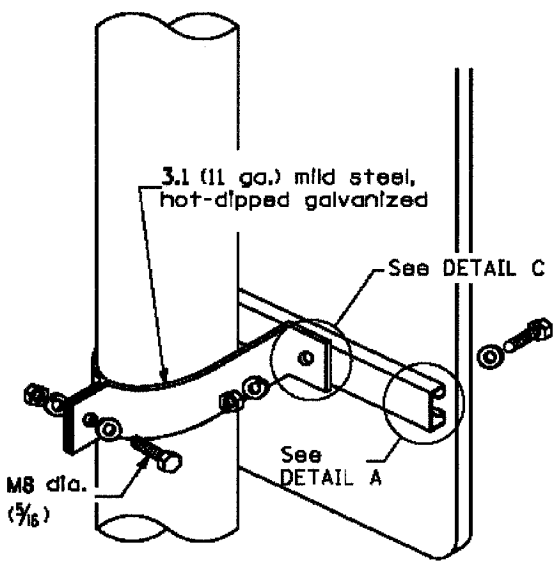
Section modulus (minimum)	Axis A	Axis B
Steel	819 mm ³ (0.050 in. ³)	1720 mm ³ (0.105 in. ³)
Aluminum	2458 mm ³ (0.150 in. ³)	5162 mm ³ (0.315 in. ³)



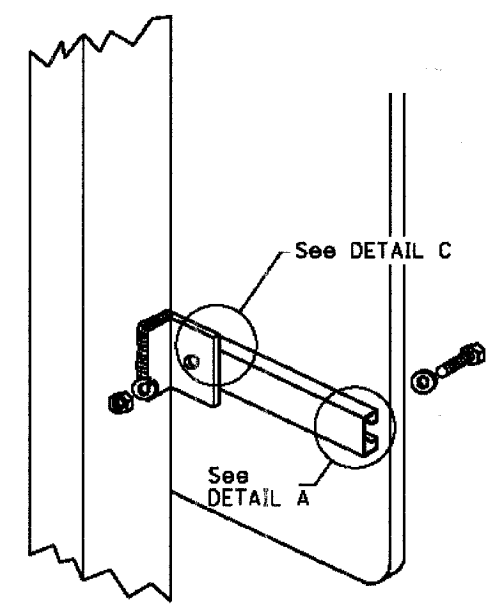
SUPPORTING CHANNEL DETAILS



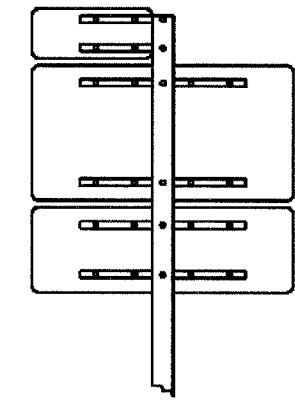
Sign panel over 900 (36) wide



Sign panel over 900 (36) wide



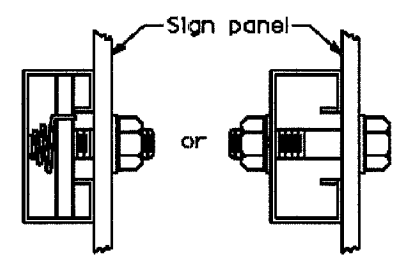
BREAKAWAY STEEL TUBING POSTS
(All sign panel sizes)



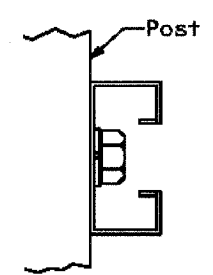
ROUTE MARKER ASSEMBLY

WOOD OR TELESCOPING STEEL POSTS

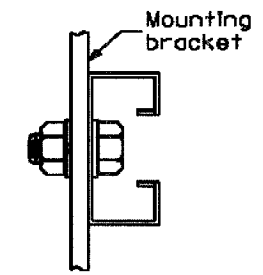
LIGHT OR SIGNAL STANDARDS



DETAIL A



DETAIL B



DETAIL C

All dimensions are in millimeters (inches) unless otherwise shown.

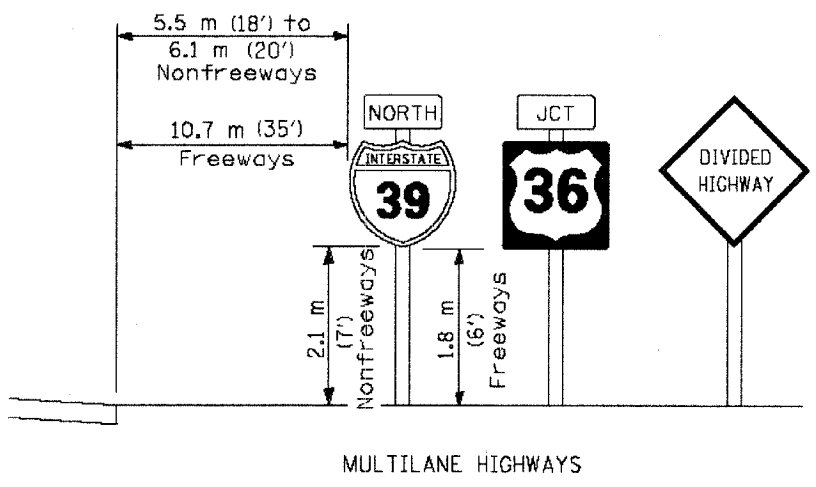
HANCOCK ENGINEERING
 Civil Engineers
 Municipal Consultants
 Established 1911
 9933 Roosevelt Road
 Westchester, Illinois 61154-2780
 Phone: 708/865-8100
 Fax: 708/865-1212

REVISIONS	
NAME	DATE
M. DE YOUNG	06/13/90
M. DE YOUNG	07/03/90
M. DE YOUNG	3/27/92
R. SHAH	09/09/94
R. SHAH	10/25/94
A. ABBAS	03/21/97
M. GOMEZ	04/06/01

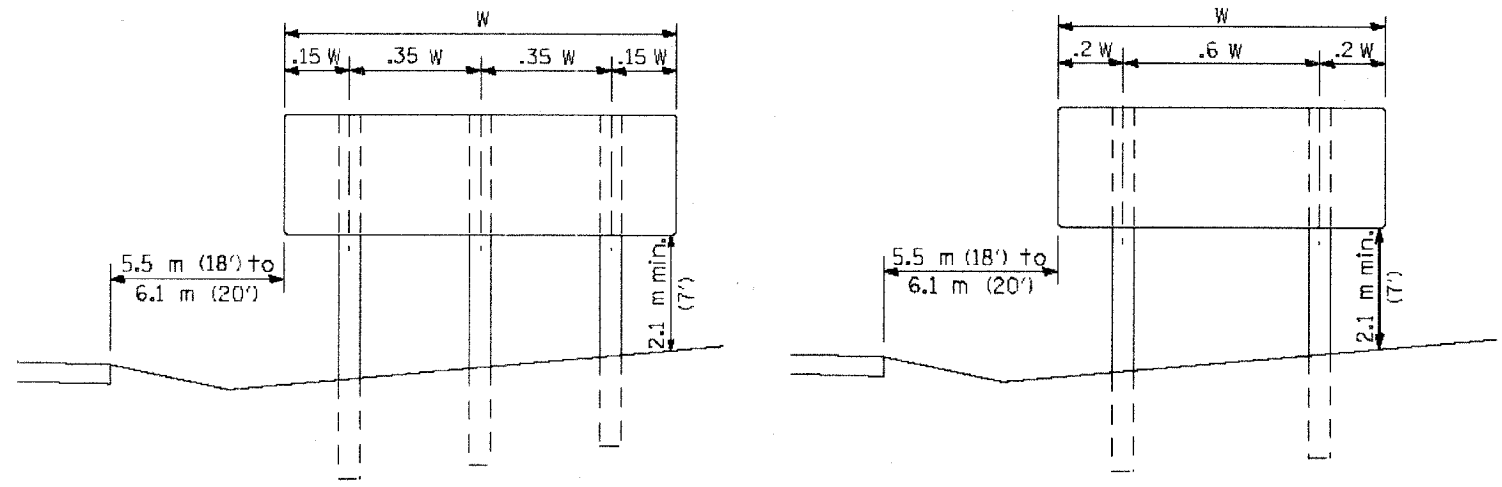
ILLINOIS DEPARTMENT OF TRANSPORTATION

SIGN PANEL MOUNTING DETAILS

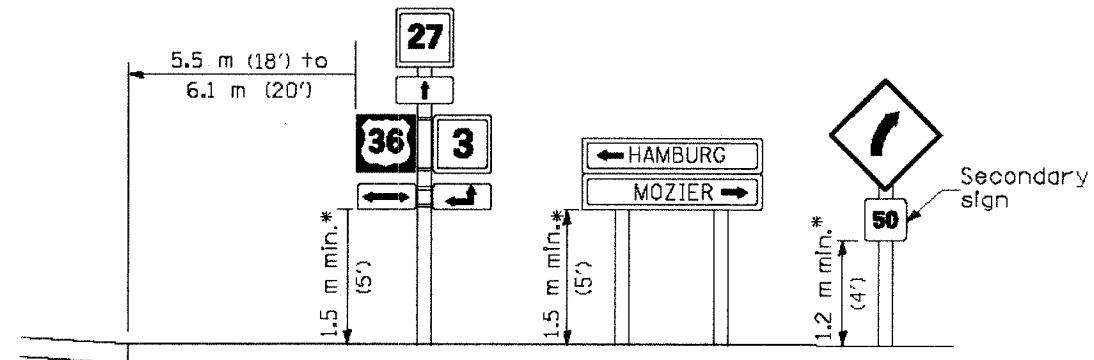
SCALE: NONE	DRAWN BY: CADD
DATE: 03/25/02	CHECKED BY:



MULTILANE HIGHWAYS

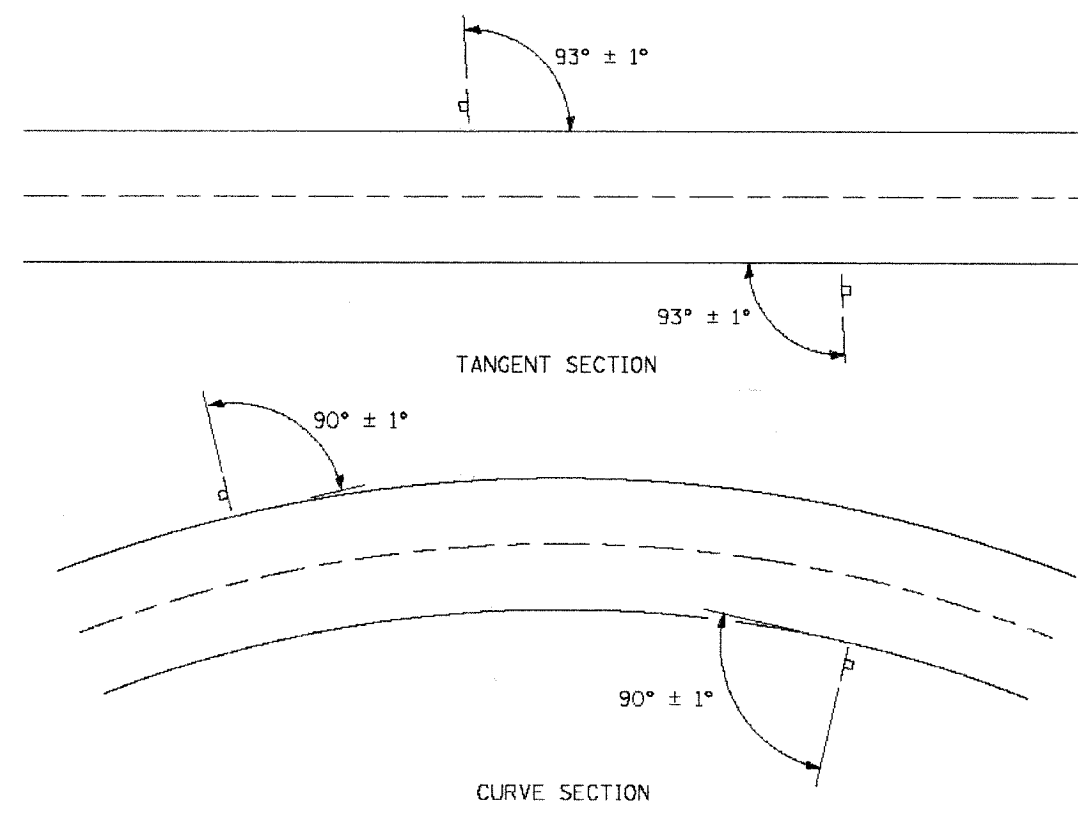


POST SPACING FOR NON-FREEWAY SIGN PANELS



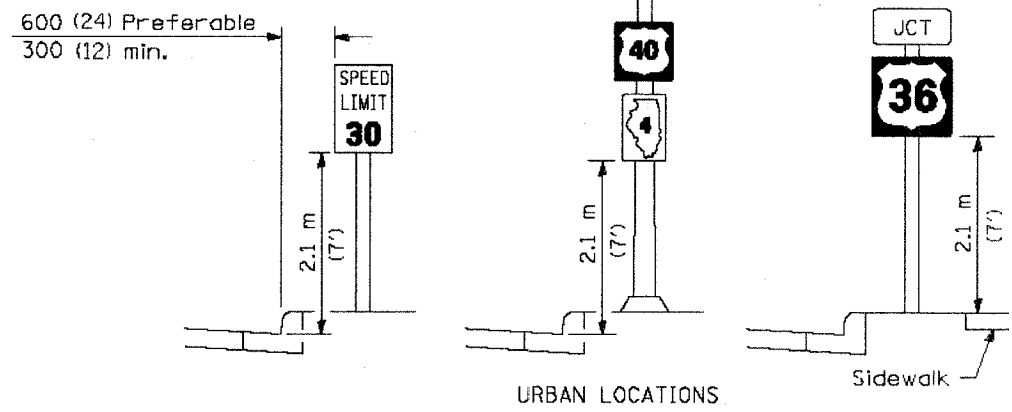
* In any area where parking is likely to occur or where there are obstructions to view or where signs are located over sidewalks, the height shall be at least 2.1 m (7').

TWO LANE RURAL HIGHWAYS



GROUND MOUNT SIGN POSITIONING

All dimensions are in millimeters (inches) unless otherwise shown.



TYPICAL INSTALLATIONS


Signs in any area shall be erected to a uniform height above the edge of the pavement.

<p>HANCOCK ENGINEERING Civil Engineers Municipal Consultants Established 1911</p>	<p>REVISIONS</p> <table border="1"> <tr> <th>NAME</th> <th>DATE</th> </tr> <tr> <td>M. DE YOUNG</td> <td>06/13/90</td> </tr> <tr> <td>M. DE YOUNG</td> <td>07/03/90</td> </tr> <tr> <td>M. DE YOUNG</td> <td>3/27/92</td> </tr> <tr> <td>R. SHAH</td> <td>09/09/94</td> </tr> <tr> <td>R. SHAH</td> <td>10/25/94</td> </tr> <tr> <td>A. ABBAS</td> <td>03/21/97</td> </tr> <tr> <td>M. GOMEZ</td> <td>04/06/01</td> </tr> </table>		NAME	DATE	M. DE YOUNG	06/13/90	M. DE YOUNG	07/03/90	M. DE YOUNG	3/27/92	R. SHAH	09/09/94	R. SHAH	10/25/94	A. ABBAS	03/21/97	M. GOMEZ	04/06/01	<p>ILLINOIS DEPARTMENT OF TRANSPORTATION</p> <p>SIGN PANEL ERECTION DETAILS</p>	
	NAME	DATE																		
M. DE YOUNG	06/13/90																			
M. DE YOUNG	07/03/90																			
M. DE YOUNG	3/27/92																			
R. SHAH	09/09/94																			
R. SHAH	10/25/94																			
A. ABBAS	03/21/97																			
M. GOMEZ	04/06/01																			
<p>9933 Roosevelt Road Westchester, Illinois 60154-2700 Phone: 708/865-6100 Fax: 708/865-1212</p>	<p>SCALE: NONE DATE: 03/25/02</p>	<p>DRAWN BY: CADD CHECKED BY:</p>	<p>E.H.E. PROJECT NO. 080-03-085</p>																	

Drawing File: W:\Projects\0803085 - Prairie Path Imp\DOT STD\03RD.dwg May 22, 2007 - 3:41pm

ABV ABOVE	D DEGREE OF CURVE	INST INSTALLATION	RR RAILROAD	T TANGENT DISTANCE
A/C ACCESS CONTROL	DC DEPRESSED CURVE	IDS INTERSECTION DESIGN STUDY	RRS RAILROAD SPIKE	T.R. TANGENT RUNOUT DISTANCE
AC ACRE	DET DETECTOR	INV INVERT	RPS REFERENCE POINT STAKE	TEL TELEPHONE
ADJ ADJUST	DIA DIAMETER	IP IRON PIPE	REF REFLECTIVE	TB TELEPHONE BOX
AS AERIAL SURVEYS	DIST DISTRICT	IR IRON ROD	RCCP REINFORCED CONCRETE	TP TELEPHONE POLE
AGG AGGREGATE	DOM DOMESTIC	JT JOINT	REINFC REINFORCEMENT	TEMP TEMPORARY
AH AHEAD	DBL DOUBLE	kg KILOGRAM	REM REMOVAL	TBM TEMPORARY BENCH MARK
APT APARTMENT	DSEL DOWNSTREAM ELEVATION	km KILOMETER	RC REMOVE CROWN	TD TILE DRAIN
ASPH ASPHALT	DSFL DOWNSTREAM FLOWLINE	LS LANDSCAPING	REP REPLACEMENT	TBE TO BE EXTENDED
AUX AUXILIARY	DR DRAINAGE OR DRIVE	LN LANE	REST RESTAURANT	TBR TO BE REMOVED
AGS AUXILIARY GAS VALVE (SERVICE)	DI DRAINAGE INLET OR DROP INLET	LT LEFT	RESURF RESURFACING	TBS TO BE SAVED
AVE AVENUE	DRV DRIVEWAY	LP LIGHT POLE	RET RETAINING	TWP TOWNSHIP
AX AXIS OF ROTATION	DCT DUCT	LGT LIGHTING	RT RIGHT	TR TOWNSHIP ROAD
BK BACK	EA EACH	L LINEAL FEET OR LINEAR FEET	ROW RIGHT-OF-WAY	TS TRAFFIC SIGNAL
B-B BACK TO BACK	EB EASTBOUND	L LITER OR CURVE LENGTH	RD ROAD	TSCB TRAFFIC SIGNAL CONTROL BOX
BKPL BACKPLATE	EOP EDGE OF PAVEMENT	LC LONG CHORD	RDWY ROADWAY	TSC TRAFFIC SYSTEMS CENTER
B BARN	E-CL EDGE TO CENTERLINE	LNG LONGITUDINAL	RTY ROUTE	TRVS TRANSVERSE
BARR BARRICADE	E-E EDGE TO EDGE	L SUM LUMP SUM	SAN SANITARY	TRVL TRAVEL
BGN BEGIN	EL ELEVATION	MACH MACHINE	SANS SANITARY SEWER	TRN TURN
BM BENCHMARK	ENTR ENTRANCE	MB MAIL BOX	SEC SECTION	TY TYPE
BIND BINDER	EXC EXCAVATION	MH MANHOLE	SEED SEEDING	T-A TYPE A
BIT BITUMINOUS	EX EXISTING	MATL MATERIAL	SHAP SHAPING	TYP TYPICAL
BTM BOTTOM	EXPWAY EXPRESSWAY	MED MEDIAN	S SHED	UNDGND UNDERGROUND
BLVD BOULEVARD	E EXTERNAL DISTANCE OF HORIZONTAL CURVE	m METER	SH SHEET	USGS U. S. GEOLOGICAL SURVEY
BRK BRICK	E OFFSET DISTANCE TO VERTICAL CURVE	METH METHOD	SHLD SHOULDER	USEL UPSTREAM ELEVATION
BBOX BUFFALO BOX	F-F FACE TO FACE	M MID-ORDINATE	SW SIDEWALK OR SOUTHWEST	USFL UPSTREAM FLOWLINE
BLOG BUILDING	FA FEDERAL AID	mm MILLIMETER	SIG SIGNAL	UTIL UTILITY
CIP CAST IRON PIPE	FAI FEDERAL AID INTERSTATE	mm DIA MILLIMETER DIAMETER	SOD SODDING	VBOX VALVE BOX
CB CATCH BASIN	FAP FEDERAL AID PRIMARY	MIX MIXTURE	SM SOLID MEDIUM	VV VALVE VAULT
C-C CENTER TO CENTER	FAS FEDERAL AID SECONDARY	MBH MOBILE HOME	SB SOUTHBOUND	VLV VAULT
CL CENTERLINE OR CLEARANCE	FAS US FEDERAL AID URBAN SECONDARY	MOD MODIFIED	SE SOUTHEAST	VEH VEHICLE
CL-E CENTERLINE TO EDGE	FP FENCE POST	MFT MOTOR FUEL TAX	SPL SPECIAL	VP VENT PIPE
CL-F CENTERLINE TO FACE	FE FIELD ENTRANCE	N & BC NAIL & BOTTLE CAP	SD SPECIAL DITCH	VERT VERTICAL
CTS CENTERS	FH FIRE HYDRANT	N & C NAIL & CAP	SO FT SQUARE FEET	VC VERTICAL CURVE
CERT CERTIFIED	FL FLOW LINE	N & W NAIL & WASHER	m ² SQUARE METER	VPC VERTICAL POINT OF CURVATURE
CHSLD CHISELED	FB FOOT BRIDGE	NOAA NATIONAL OCEANIC ATMOSPHERIC ADMINISTRATION	mm ² SQUARE MILLIMETER	VPI VERTICAL POINT OF INTERSECTION
CS CITY STREET	FDN FOUNDATION	NC NORMAL CROWN	SO YD SQUARE YARD	VPT VERTICAL POINT OF TANGENCY
CP CLAY PIPE	FR FRAME	NB NORTHBOUND	STB STABILIZED	WM WATER METER
CLSD CLOSED	F&G FRAME & GRATE	NE NORTHEAST	STD STANDARD	WV WATER VALVE
CLID CLOSED LID	FRWAY FREEWAY	NW NORTHWEST	SBI STATE BOND ISSUE	WMAIN WATER MAIN
CT COAT OR COURT	GAL GALLON	OLID OPEN LID	SR STATE ROUTE	WB WESTBOUND
COMB COMBINATION	GALV GALVANIZED	PAT PATTERN	STA STATION	WILDFL WILDFLOWERS
C COMMERCIAL BUILDING	G GARAGE	PVD PAVED	SPBGR STEEL PLATE BEAM GUARDRAIL	W WITH
CE COMMERCIAL ENTRANCE	GM GAS METER	PVMT PAVEMENT	SS STORM SEWER	WO WITHOUT
CONC CONCRETE	GV GAS VALVE	PM PAVEMENT MARKING	STY STORY	
CONST CONSTRUCT	GRAN GRANULAR	PED PEDESTAL	ST STREET	
CONTD CONTINUED	GR GRATE	PNT POINT	STR STRUCTURE	
CONT CONTINUOUS	GRVL GRAVEL	PC POINT OF CURVATURE	e SUPERELEVATION RATE	
COR CORNER	GND GROUND	PI POINT OF INTERSECTION OF HORIZONTAL CURVE	S.E. RUN. SUPERELEVATION RUNOFF LENGTH	
CORR CORRUGATED	GUT GUTTER	PRC POINT OF REVERSE CURVE	SURF SURFACE	
CMP CORRUGATED METAL PIPE	GP GUY POLE	PT POINT OF TANGENCY	SMK SURVEY MARKER	
CNTY COUNTY	GW GUY WIRE	POT POINT ON TANGENT		
CH COUNTY HIGHWAY	HH HANDHOLE	POLYETH POLYETHYLENE		
CSE COURSE	HATCH HATCHING	PCC PORTLAND CEMENT CONCRETE		
XSECT CROSS SECTION	HD HEAD	PP POWER POLE OR PRINCIPAL POINT		
m ³ CUBIC METER	HDW HEADWALL	PRM PRIME		
mm ³ CUBIC MILLIMETER	HDUTY HEAVY DUTY	PE PRIVATE ENTRANCE		
CU YD CUBIC YARD	ha HECTARE	PROF PROFILE		
CULV CULVERT	HWH HIGHWAY	PGL PROFILE GRADELINE		
C&G CURB & GUTTER	HORIZ HORIZONTAL	PROJ PROJECT		
	HSE HOUSE	P.C. PROPERTY CORNER		
	IL ILLINOIS	PL PROPERTY LINE		
	IMP IMPROVEMENT	PR PROPOSED		
	IN DIA INCH DIAMETER	R RADIUS		
	INL INLET			

Drawing file: W:\Projects\08030305 - Profile from Imp\001 STANDARD.dwg May 22, 2007 - 3:41pm



HANCOCK ENGINEERING

◆ Civil Engineers
◆ Municipal Consultants
◆ Established 1911

9933 Roosevelt Road
Westchester, Illinois 60154-2780
Phone: 708/965-0300
Fax: 708/965-1212

REVISIONS	
NAME	DATE
M. DE YOUNG	06/13/90
M. DE YOUNG	07/03/90
M. DE YOUNG	3/27/92
R. SHAH	09/09/94
R. SHAH	10/25/94
A. ABBAS	03/21/97
M. GOMEZ	04/06/01

ILLINOIS DEPARTMENT OF TRANSPORTATION

STANDARD SYMBOLS, ABBREVIATIONS AND PATTERNS

SCALE: NONE
DATE: 03/25/02

DRAWN BY: CADD
CHECKED BY: