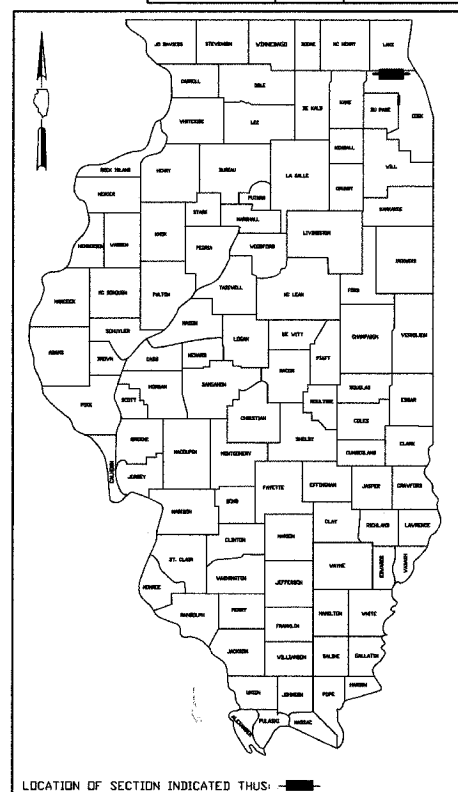


FULL SHEET NO.	SECTION	COUNTY	TOTAL SHEETS	SHEET NO.
03-00087-00-LT		COOK	20	1
TITLE SHEET				
FED. ROAD DISTRICT NO. 7	ILLINOIS	FED. AID PROJECT M-8003(664)		



LOCATION OF SECTION INDICATED THUS: [shaded box]

STATE OF ILLINOIS  
DEPARTMENT OF TRANSPORTATION  
DIVISION OF HIGHWAYS

APPROVED July 11, 2007  
*Angus P. Bryan*  
VILLAGE OF BUFFALO GROVE, DIRECTOR OF PUBLIC WORKS

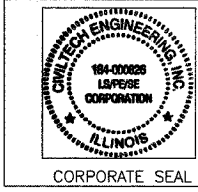
PASSED JULY 16, 2007  
*Christopher Holt*  
DISTRICT ONE ENGINEER OF LOCAL ROADS & STREETS

RELEASING FOR BID  
BASED ON LIMITED  
REVIEW July 17, 2007  
*Diane O'Keefe*  
DEPUTY DIRECTOR OF HIGHWAYS, REGION ONE ENGINEER

P.E. SIGNATURE: *[Signature]*  
P.E. NAME: DAVID MERTZ  
DATE: 10 JULY 2007  
IL LICENSE NO.: 062-052068  
LICENSE EXPIRATION: 11/30/2007



P.E. SIGNATURE: *[Signature]*  
P.E. NAME: DEREK MALL  
DATE: July 12, 2007  
IL LICENSE NO.: 062-051308  
LICENSE EXPIRATION: 11/30/2007



CORPORATE SEAL

PLANS PREPARED BY:

**CIVILTECH**  
450 E. Devon Ave, Suite 300 - Itasca, Illinois 60143  
Tel: 630.773.3900 - Fax: 630.773.3975  
www.civiltechinc.com

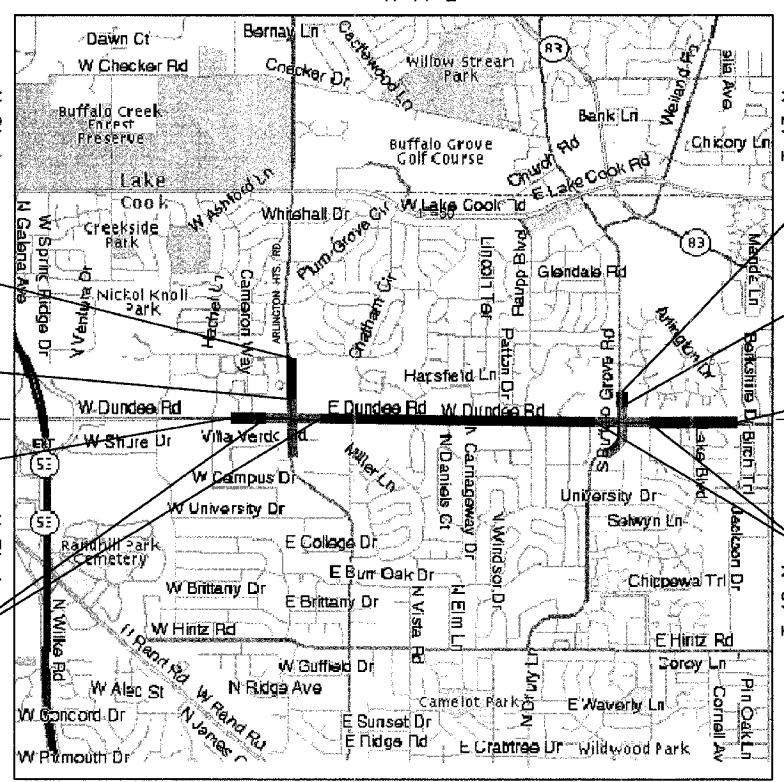


PRINTED BY AUTHORITY OF THE STATE OF ILLINOIS

**STATE OF ILLINOIS  
DEPARTMENT OF TRANSPORTATION  
DIVISION OF HIGHWAYS**

**PLANS FOR PROPOSED FEDERAL AID PROJECT  
DUNDEE ROAD  
SECTION 03-00087-00-LT  
PROJECT NO. M-8003(664)**

**LIGHTING  
COOK COUNTY  
C-91-439-06  
FAP ROUTE 343  
Buffalo Grove  
R 11 E**



R 11 E  
LOCATION MAP (NOT TO SCALE)

PROJECT ENDS  
STA. 227+38  
ARLINGTON HEIGHTS RD.

PROJECT BEGINS  
STA. 220+06  
ARLINGTON HEIGHTS RD.

PROJECT BEGINS  
STA. 0+83  
DUNDEE RD.

INTERSECTION OMISSION  
STA. 7+63 TO STA. 19+16

PROJECT ENDS  
STA. 319+16  
BUFFALO GROVE RD.

PROJECT BEGINS  
STA. 313+91  
BUFFALO GROVE RD.

PROJECT ENDS  
STA. 110+05  
DUNDEE RD.

INTERSECTION OMISSION  
STA. 78+30 TO STA. 91+95

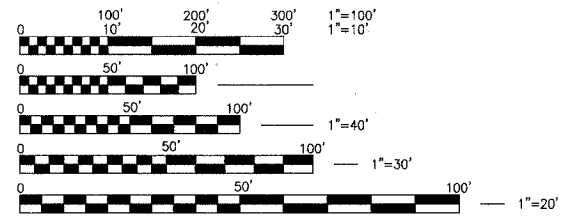
NET AND GROSS PROJECT LENGTH: 9,638 FT. (1.83 MI)

INDEX OF SHEETS

SHEET NO.	DESCRIPTION
1	TITLE, INDEX & LOCATION MAP
2	SUMMARY OF QUANTITIES AND GENERAL NOTES
3-16	LIGHTING PLANS
17-20	LIGHTING DETAILS

INDEX OF STATE STANDARDS

NO.	DESCRIPTION
424001-04	CURB RAMPS FOR SIDEWALKS
701501-03	LANE CLOSURE, 2L 2W, DAY OR NIGHT OPERATIONS
701606-04	URBAN LANE CLOSURE, MULTILANE 2W WITH MOUNTABLE MEDIAN
701701-04	URBAN LANE CLOSURE, MULTILANE INTERSECTION
701801-03	LANE CLOSURE, MULTILANE, 1W OR 2W CROSSWALK OR SIDEWALK CLOSURE
702001-06	TRAFFIC CONTROL DEVICES



ENGINEERING SCALES, REDUCED SIZED PLANS WILL NOT CONFORM TO STANDARD SCALES, IN MAKING MEASUREMENTS ON REDUCED PLANS, THE ABOVE SCALES MAY BE USED.

THE "STANDARD SPECIFICATIONS FOR ROAD AND BRIDGE CONSTRUCTION", ADOPTED JANUARY 1, 2007 BY THE ILLINOIS DEPARTMENT OF TRANSPORTATION, SHALL GOVERN THIS WORK.



1-800-892-0123

CONTRACT NO. 83954