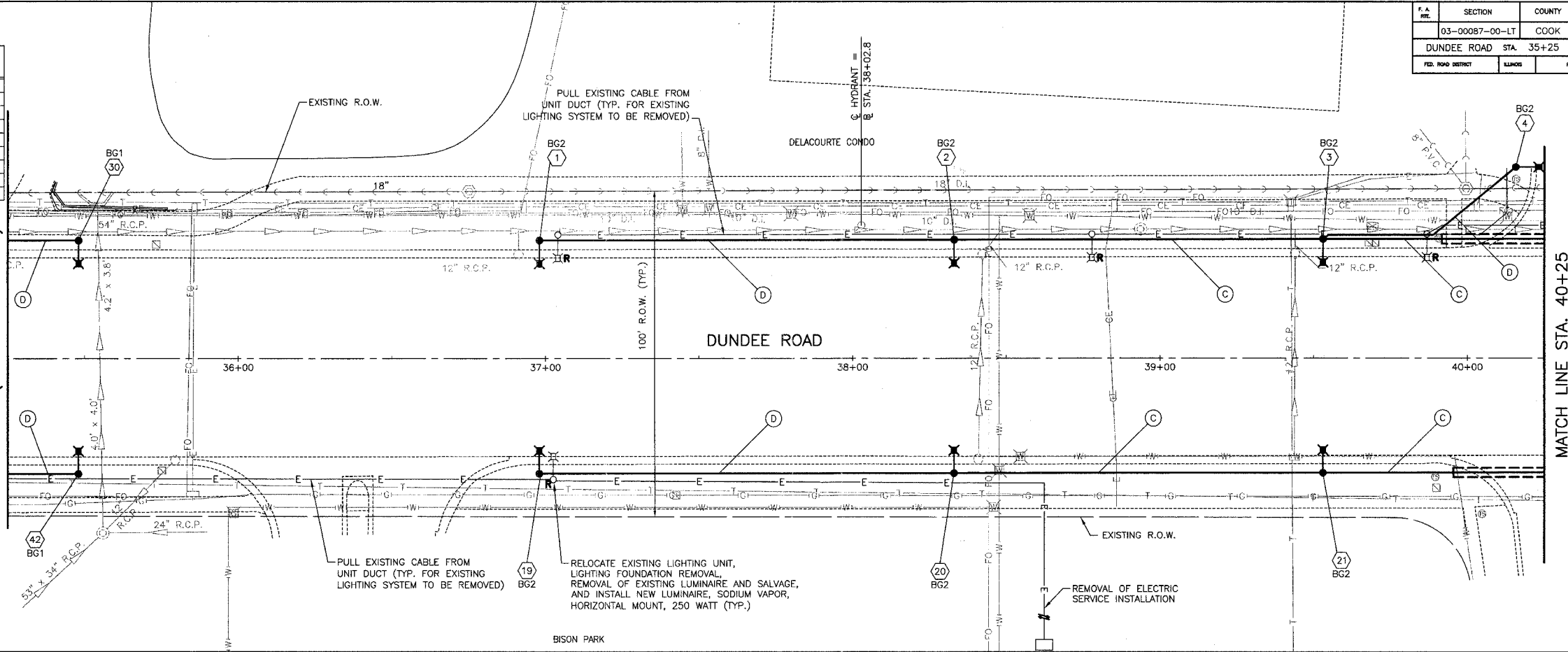


F.A. NO.	SECTION	COUNTY	TOTAL SHEETS	SHEET NO.
03-00087-00-LT		COOK	20	7
DUNDEE ROAD STA. 35+25 TO STA. 45+25				
FED. RD. DISTRICT	ALNOS	FED. AID PROJECT		

POLE NUMBER	CONTROLLER NO.	STATION	OFFSET	LIGHT CIRCUIT	FOUNDATION TYPE
30	BG1	35+48	3' B.C.	E	OS
1	BG2	36+98	3' B.C.	A	OS
2	BG2	38+23	3' B.C.	B	OS
3	BG2	39+48	3' B.C.	A	OS
4	BG2	40+16	3' B.C.	B	24
42	BG1	35+48	3' B.C.	G	24
19	BG2	36+98	3' B.C.	D	24
20	BG2	38+23	3' B.C.	C	24
21	BG2	39+48	3' B.C.	D	24

**FOUNDATION TYPE**  
 24 = LIGHT POLE FOUNDATION, 24" DIAMETER  
 OS = LIGHT POLE FOUNDATION, 24" DIAMETER, OFFSET  
 SP = LIGHT POLE FOUNDATION (SPECIAL)  
 EX = EXISTING FOUNDATION

MATCH LINE STA. 35+25  
(SEE SHEET NO. 6)

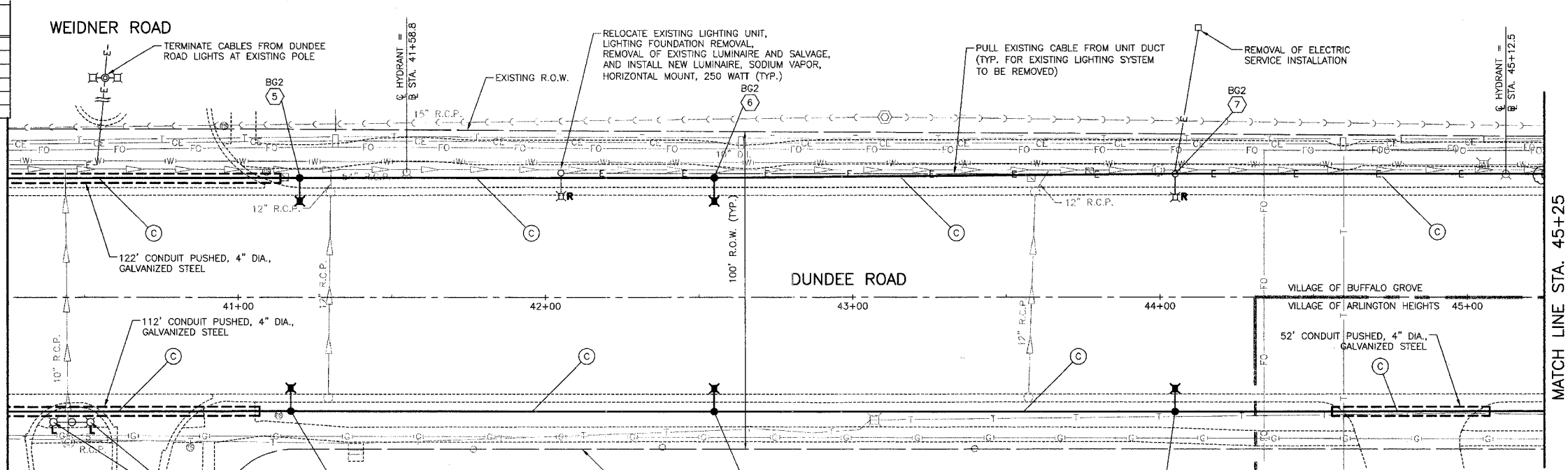


MATCH LINE STA. 40+25

POLE NUMBER	CONTROLLER NO.	STATION	OFFSET	LIGHT CIRCUIT	FOUNDATION TYPE
5	BG2	41+20	3' B.C.	A	OS
6	BG2	42+83	3' B.C.	B	SP
7	BG2	44+28	3' B.C.	A	24
22	BG2	41+18	3' B.C.	C	24
23	BG2	42+83	3' B.C.	D	24
24	BG2	44+28	3' B.C.	C	24

WEIDNER ROAD

MATCH LINE STA. 40+25



MATCH LINE STA. 45+25  
(SEE SHEET NO. 8)

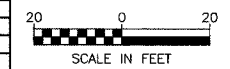
- (A) UNIT DUCT, WITH 4-1/C NO. 6 AND 1-1/C NO. 6 GROUND, 600V (EPR-TYPE RHW), 2" DIA., POLYETHYLENE
- (B) UNIT DUCT, WITH 2-1/C NO. 6 AND 1-1/C NO. 6 GROUND, 600V (EPR-TYPE RHW), 2" DIA., POLYETHYLENE
- (C) UNIT DUCT, WITH 4-1/C NO. 4 AND 1-1/C NO. 4 GROUND, 600V (EPR-TYPE RHW), 2" DIA., POLYETHYLENE
- (D) UNIT DUCT, WITH 2-1/C NO. 4 AND 1-1/C NO. 4 GROUND, 600V (EPR-TYPE RHW), 2" DIA., POLYETHYLENE

CROFTON DRIVE

REMOVAL OF EXISTING LUMINAIRE AND SALVAGE, AND INSTALL NEW LUMINAIRE, SODIUM VAPOR, HORIZONTAL MOUNT, PHOTO-CELL CONTROL, 250 WATT; EXISTING POLE AND FOUNDATION TO REMAIN

VILLAGE OF BUFFALO GROVE  
**DUNDEE ROAD LIGHTING IMPROVEMENT**  
**LIGHTING PLAN**  
 DUNDEE ROAD  
 STA. 35+25 TO STA. 45+25

NO.	DATE	DESCRIPTION



DESIGNED BY: S.J.C.  
 CHECKED BY: D.N.M.  
 DATE: 07/10/2007