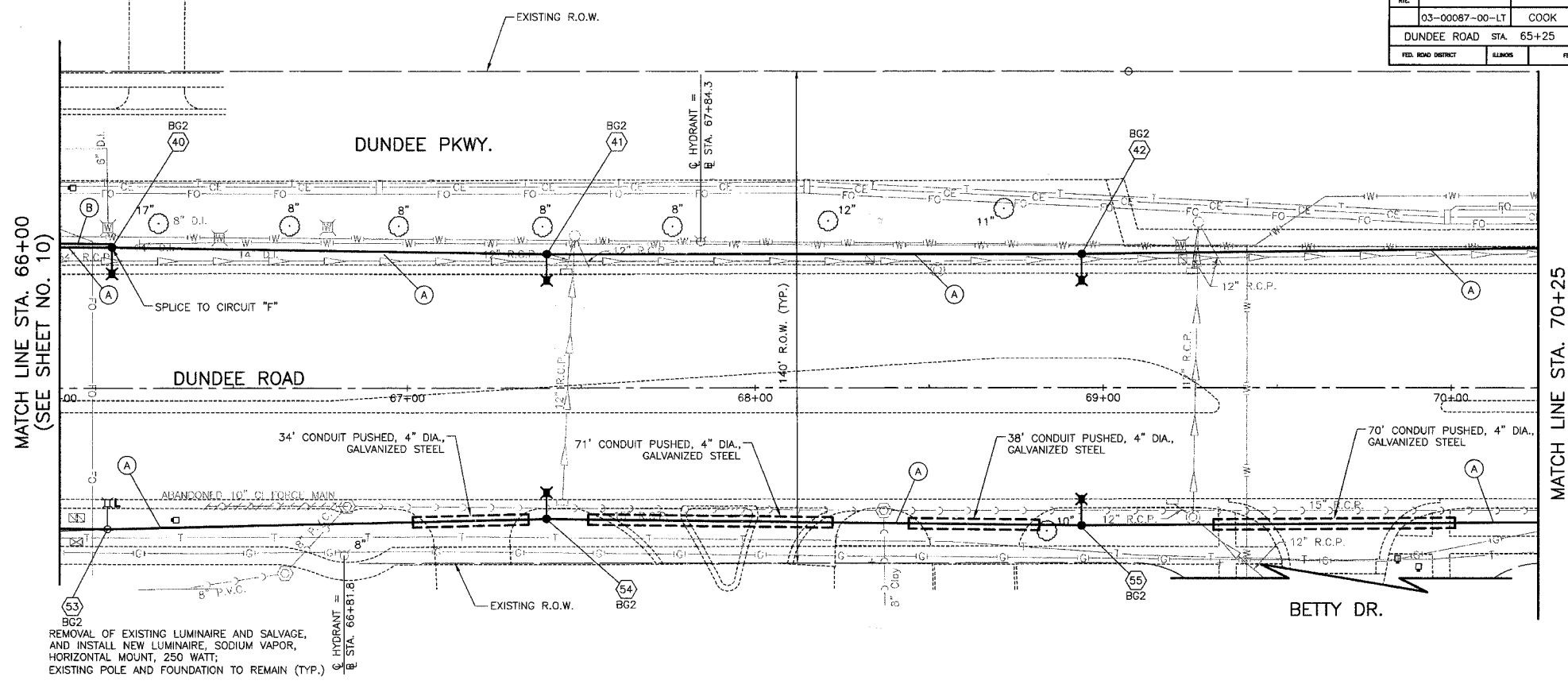


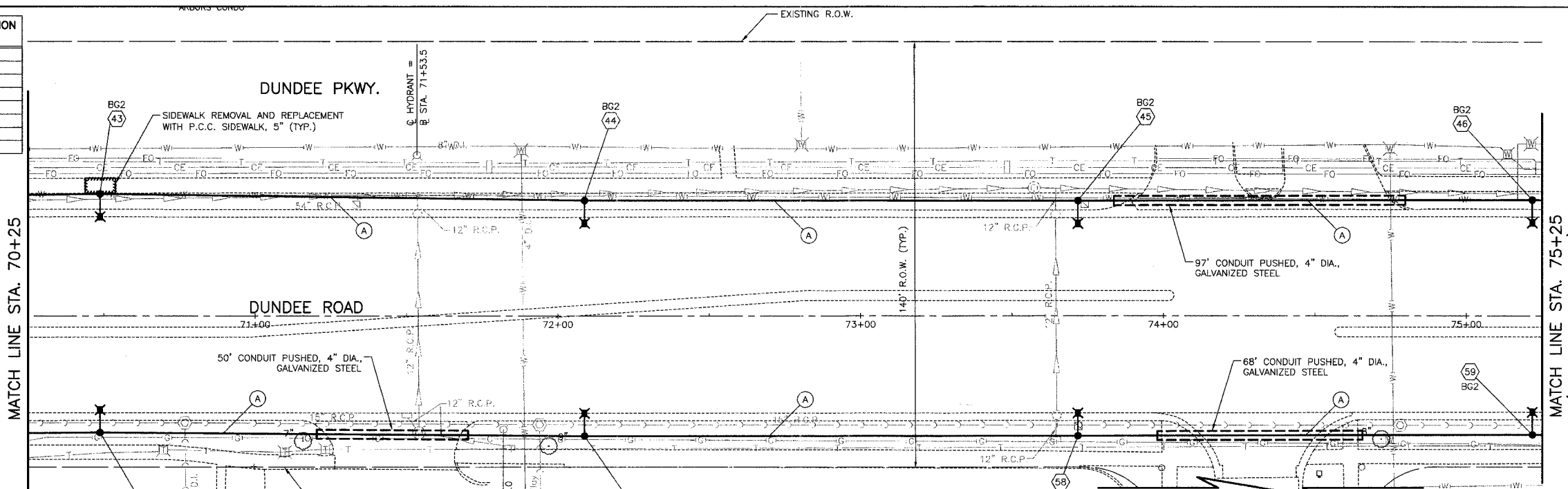
POLE NUMBER	CONTROLLER NO.	STATION	OFFSET	LIGHT CIRCUIT	FOUNDATION TYPE
40	BG2	66+15	3' B.C.	E	SP
41	BG2	67+40	3' B.C.	F	SP
42	BG2	68+94	3' B.C.	E	OS
53	BG2	66+15	3' B.C.	G	EX
54	BG2	67+40	3' B.C.	H	24
55	BG2	68+94	3' B.C.	G	24

F.A. REC.	SECTION	COUNTY	TOTAL SHEETS	SHEET NO.
	03-00087-00-LT	COOK	20	11
DUNDEE ROAD STA. 65+25 TO STA. 75+25				
FED. ROAD DISTRICT	ALLOWS	FED. AID PROJECT		

FOUNDATION TYPE
 24 = LIGHT POLE FOUNDATION, 24" DIAMETER
 OS = LIGHT POLE FOUNDATION, 24" DIAMETER, OFFSET
 SP = LIGHT POLE FOUNDATION (SPECIAL)
 EX = EXISTING FOUNDATION



POLE NUMBER	CONTROLLER NO.	STATION	OFFSET	LIGHT CIRCUIT	FOUNDATION TYPE
43	BG2	70+49	3' B.C.	F	OS
44	BG2	72+09	3' B.C.	E	SP
45	BG2	73+72	3' B.C.	F	OS
46	BG2	75+22	3' B.C.	E	SP
56	BG2	70+49	3' B.C.	H	24
57	BG2	72+09	3' B.C.	G	24
58	BG2	73+72	3' B.C.	H	24
59	BG2	75+22	3' B.C.	G	24



- (A) UNIT DUCT, WITH 4-1/2" NO. 6 AND 1-1/2" NO. 6 GROUND, 600V (EPR-TYPE RHW), 2" DIA., POLYETHYLENE
- (B) UNIT DUCT, WITH 2-1/2" NO. 6 AND 1-1/2" NO. 6 GROUND, 600V (EPR-TYPE RHW), 2" DIA., POLYETHYLENE
- (C) UNIT DUCT, WITH 4-1/2" NO. 4 AND 1-1/2" NO. 4 GROUND, 600V (EPR-TYPE RHW), 2" DIA., POLYETHYLENE
- (D) UNIT DUCT, WITH 2-1/2" NO. 4 AND 1-1/2" NO. 4 GROUND, 600V (EPR-TYPE RHW), 2" DIA., POLYETHYLENE

REVISIONS

NO.	DESCRIPTION

VILLAGE OF BUFFALO GROVE
DUNDEE ROAD LIGHTING IMPROVEMENT
LIGHTING PLAN
 DUNDEE ROAD
 STA. 66+00 TO STA. 75+25

DESIGNED BY: S.J.C.
 CHECKED BY: D.N.M.
 DATE: 07/10/2007

SCALE IN FEET