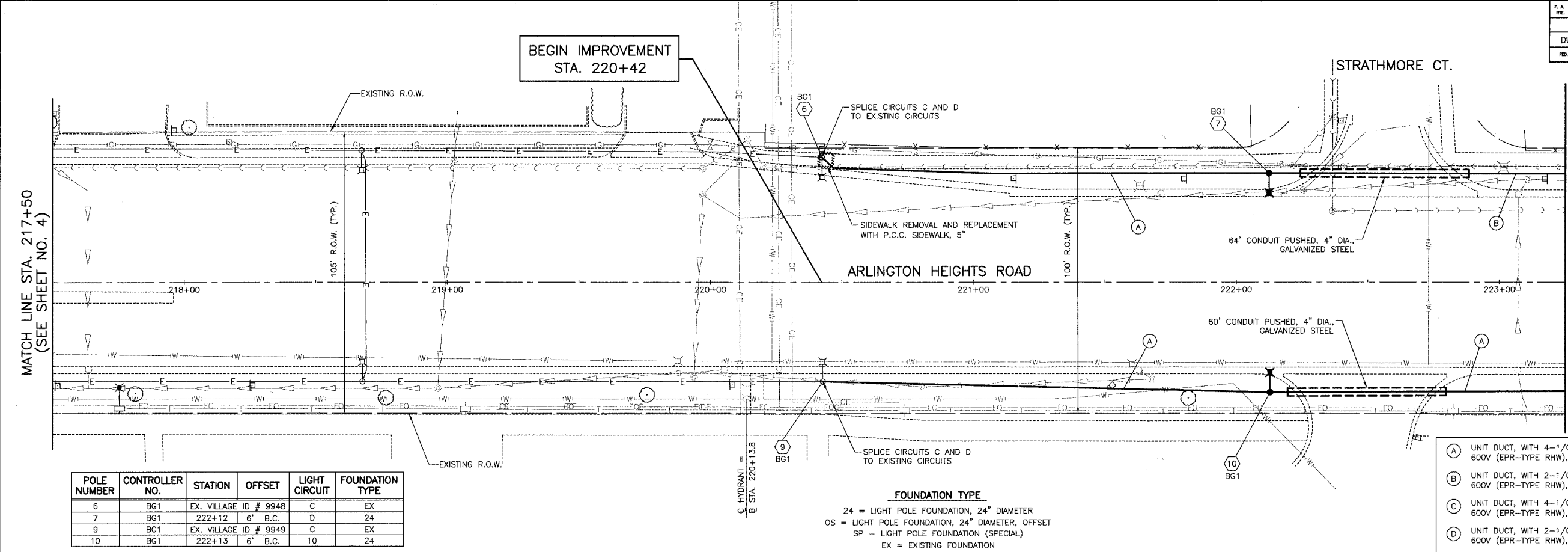


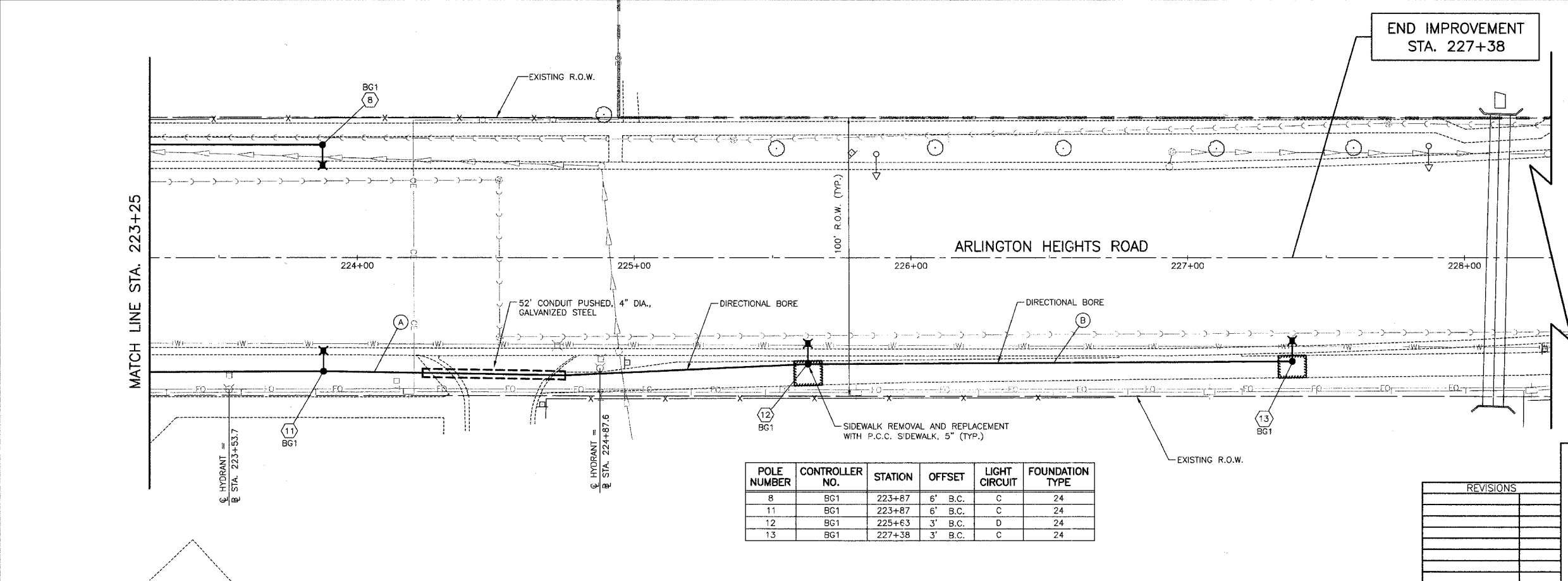
SECTION	COUNTY	TOTAL SHEETS	SHEET NO
03-00087-00-LT	COOK	20	15
DUNDEE ROAD STA. 217+50 TO STA. 228+50			
FED. ROAD DISTRICT	LINERS	FED. AID PROJECT	



POLE NUMBER	CONTROLLER NO.	STATION	OFFSET	LIGHT CIRCUIT	FOUNDATION TYPE
6	BG1	EX. VILLAGE ID # 9948		C	EX
7	BG1	222+12	6' B.C.	D	24
9	BG1	EX. VILLAGE ID # 9949		C	EX
10	BG1	222+13	6' B.C.	10	24

**FOUNDATION TYPE**  
 24 = LIGHT POLE FOUNDATION, 24" DIAMETER  
 OS = LIGHT POLE FOUNDATION, 24" DIAMETER, OFFSET  
 SP = LIGHT POLE FOUNDATION (SPECIAL)  
 EX = EXISTING FOUNDATION

- (A) UNIT DUCT, WITH 4-1/C NO. 6 AND 1-1/C NO. 6 GROUND, 600V (EPR-TYPE RHW), 2" DIA., POLYETHYLENE
- (B) UNIT DUCT, WITH 2-1/C NO. 6 AND 1-1/C NO. 6 GROUND, 600V (EPR-TYPE RHW), 2" DIA., POLYETHYLENE
- (C) UNIT DUCT, WITH 4-1/C NO. 4 AND 1-1/C NO. 4 GROUND, 600V (EPR-TYPE RHW), 2" DIA., POLYETHYLENE
- (D) UNIT DUCT, WITH 2-1/C NO. 4 AND 1-1/C NO. 4 GROUND, 600V (EPR-TYPE RHW), 2" DIA., POLYETHYLENE



POLE NUMBER	CONTROLLER NO.	STATION	OFFSET	LIGHT CIRCUIT	FOUNDATION TYPE
8	BG1	223+87	6' B.C.	C	24
11	BG1	223+87	6' B.C.	C	24
12	BG1	225+63	3' B.C.	D	24
13	BG1	227+38	3' B.C.	C	24

**NOTE:**  
 FOR ARLINGTON HEIGHTS ROAD AND BUFFALO GROVE ROAD AN ATTEMPT SHOULD BE MADE TO MAKE ALL LIGHTING UNITS A MINIMUM OF 6' BEHIND THE BACK OF CURB.

VILLAGE OF BUFFALO GROVE  
**DUNDEE ROAD LIGHTING IMPROVEMENT**  
**LIGHTING PLAN**  
 ARLINGTON HIEGHTS ROAD  
 STA. 217+50 TO STA. 227+38

REVISIONS

DESIGNED BY: S.J.C.  
 CHECKED BY: D.N.M.  
 DATE: 07/10/2007