

FAS ROUTE NO.	SEC	COUNTY	TOTAL SHEETS	SHEET NO
-	*	DEKALB	21	1

ILLINOIS PROJECT BRS-1122(107)
 * 04-00206-00-BR
 CONTRACT NO. 87316

PLANS FOR PROPOSED FEDERAL-AID HIGHWAY BRIDGE PROGRAM

F.A.S. 1122 (C.H. 21) CHERRY VALLEY ROAD

SECTION 04-00206-00-BR

DEKALB COUNTY

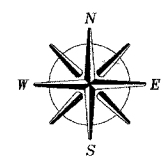
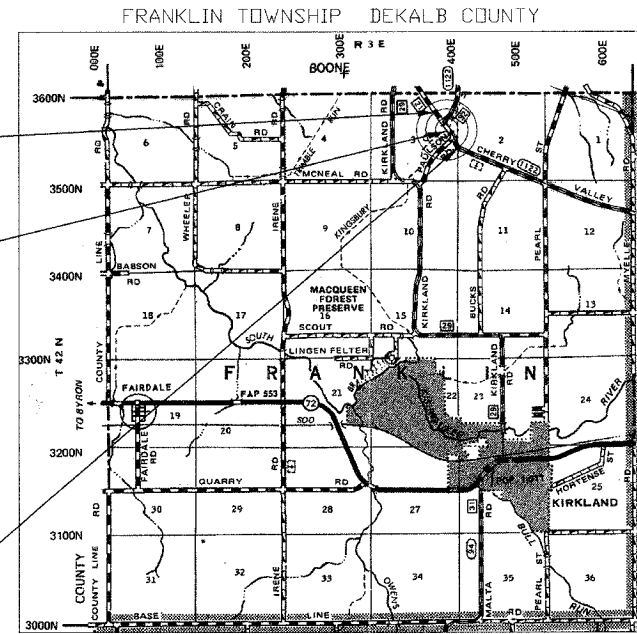
ILLINOIS PROJECT BRS-1122(107)

JOB NO. C-93-030-06

INDEX OF SHEETS

1. COVER SHEET
2. SUMMARY OF QUANTITIES
3. SCHEDULE OF QUANTITIES AND TYPICAL SECTIONS
- 4-8. PLAN AND PROFILES
- 9-14. ROADWAY CROSS SECTIONS
15. GENERAL PLAN AND ELEVATION OF BRIDGE
16. SUPERSTRUCTURE
17. SUBSTRUCTURE - ABUTMENTS
18. ABUTMENT DETAILS
19. STEEL BRIDGE RAIL SIDE MOUNTED
20. PILING DETAILS
21. STORM WATER POLLUTION PREVENTION PLAN

- STANDARDS:
- 000001-04 STANDARD SYMBOLS, ABBREVIATIONS, & PATTERNS
 - 280001-03 TEMPORARY EROSION CONTROL SYSTEMS
 - 515001-02 NAME PLATE FOR BRIDGES
 - 630001-07 STEEL PLATE BEAM GUARD RAIL
 - 630301-04 SHOULDER WIDENING FOR TYPE 1 TRAFFIC BARRIER TERMINALS
 - 631026-03 TRAFFIC BARRIER TERMINAL, TYPE 5 AND 5A
 - 635006-02 REFLECTOR AND TERMINAL MARKER PLACEMENT
 - 635011-01 REFLECTOR MARKER AND MOUNTING DETAILS
 - 702001-06 TRAFFIC CONTROL DEVICES
 - 781001-01 TYPICAL PAVEMENT MARKINGS
 - BLR 21-6 TYPICAL APPLICATION OF TRAFFIC CONTROL DEVICES
 - BLR 23-1 TRAFFIC BARRIER TERMINAL, TYPE 1
 - BLR 24-1 MAILBOX TURNOUT FOR LOCAL ROADS



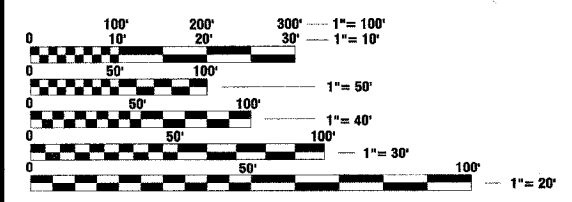
LOCATION MAP

GROSS LENGTH OF SECTION = 1255 FEET (0.24 MILE)
 NET LENGTH OF SECTION = 1255 FEET (0.24 MILE)

DESIGN CRITERIA

ROADWAY	DESIGN CLASSIFICATION	ADT 2006	ADT 2026	DESIGN SPEED
CHERRY VALLEY	RURAL COLLECTOR	3950	4500	55
STONE QUARRY	LOCAL ROAD	600	700	55
PAULSON ROAD	LOCAL ROAD	75	100	30

RURAL FAPLHI GUIDELINES



FULL SIZE PLANS HAVE BEEN PREPARED USING STANDARD ENGINEERING SCALES. REDUCED SIZED PLANS WILL NOT CONFORM TO STANDARD SCALES. IN MAKING MEASUREMENTS ON REDUCED PLANS, THE ABOVE SCALES MAY BE USED.

J.U.L.I.E.
 JOINT UTILITY LOCATION INFORMATION FOR EXCAVATION
 1-800-892-0123

CONTRACT NO. 87316



Scott A. Brown 6/27/2007
 EXPIRES 11/30/2007

PLANS PREPARED BY:

WENDLER ENGINEERING SERVICES

DIXON, ILLINOIS
 SYCAMORE, ILLINOIS
 PRINCETON, ILLINOIS
 STERLING, ILLINOIS

STATE OF ILLINOIS
 DEPARTMENT OF TRANSPORTATION
 DIVISION OF HIGHWAYS

SUBMITTED 6/27 20 07
Will [Signature] COUNTY ENGINEER

PASSED 7/10 20 07
Kenneth R. Lay DISTRICT 3 ENGINEER OF LOCAL ROADS & STREETS

RELEASED FOR BID BASED ON LIMITED REVIEW 7/10 20 07
Marge E. [Signature] DEPUTY DIRECTOR OF HIGHWAYS, REGION 2 ENGINEER

**PRINTED BY THE AUTHORITY
 OF THE STATE OF ILLINOIS**