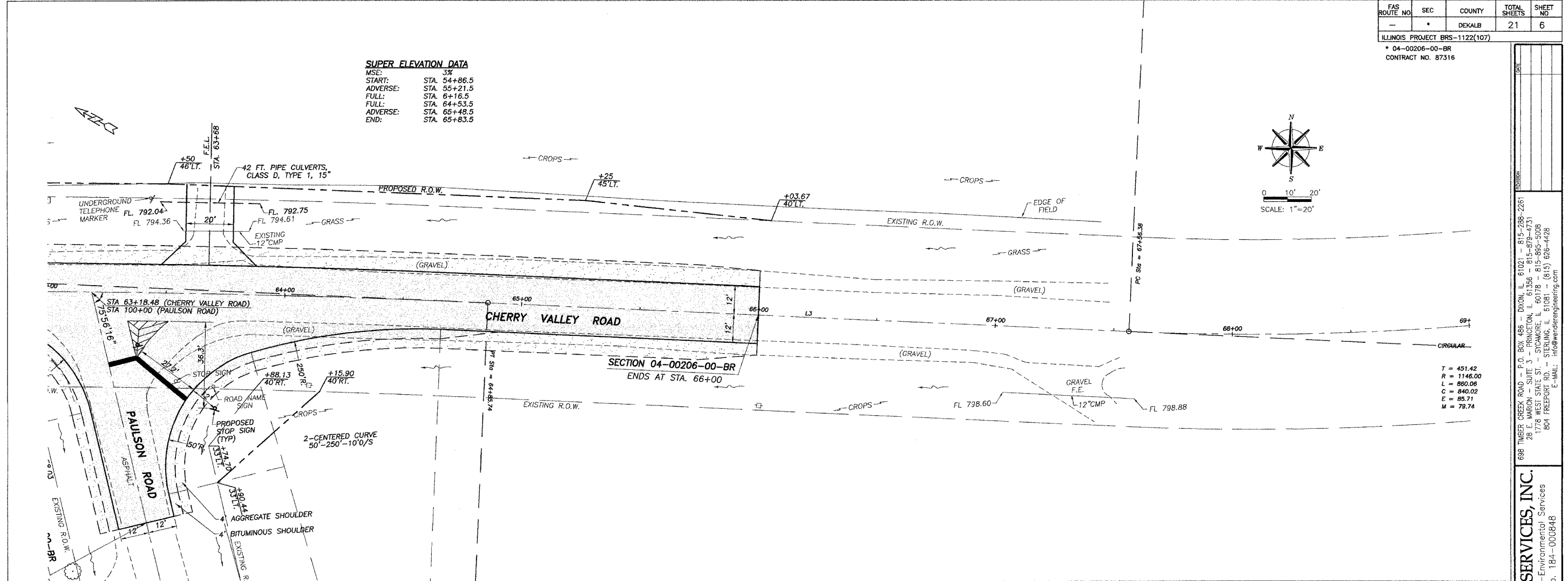
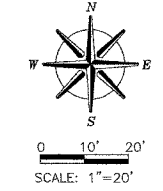


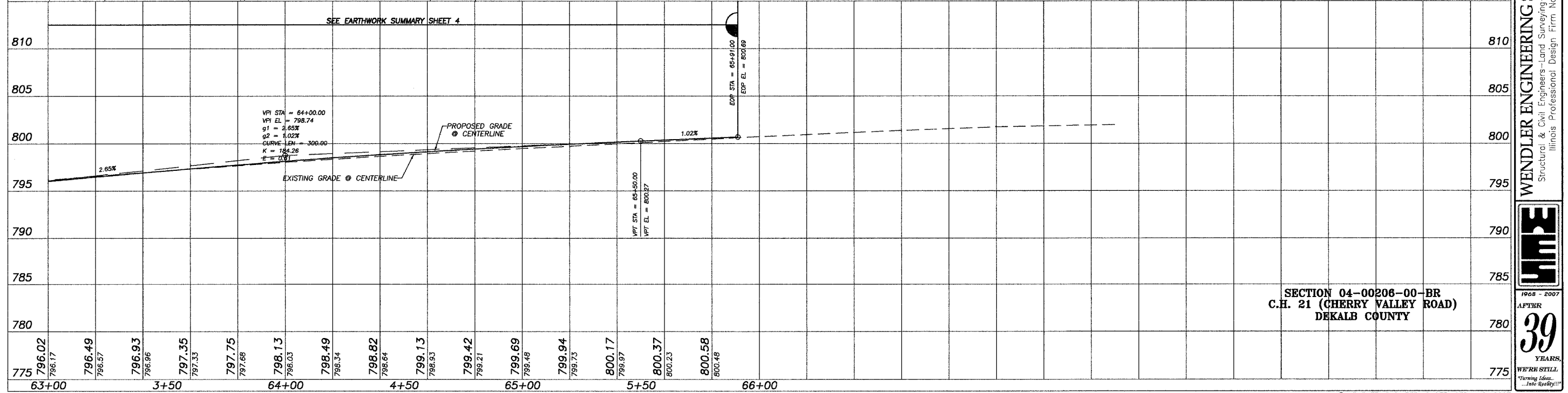
FAS ROUTE NO.	SEC	COUNTY	TOTAL SHEETS	SHEET NO.
-	*	DEKALB	21	6

ILLINOIS PROJECT BRS-1122(107)
 * 04-00206-00-BR
 CONTRACT NO. 87316

SUPER ELEVATION DATA
 MSE: 3%
 START: STA. 54+86.5
 ADVERSE: STA. 55+21.5
 FULL: STA. 6+16.5
 FULL: STA. 64+53.5
 ADVERSE: STA. 65+48.5
 END: STA. 65+83.5



T = 451.42
 R = 1146.00
 L = 860.06
 C = 840.02
 E = 85.71
 M = 79.74



SECTION 04-00206-00-BR
 C.H. 21 (CHERRY VALLEY ROAD)
 DEKALB COUNTY

688 TIMBER CREEK ROAD - P.O. BOX 486 - DIXON, IL 61021 - 815-288-2261
 28 WILSON AVENUE - SUDBURY, IL 61556 - 815-879-4731
 1176 WILSON AVENUE - ST. CHARLES, IL 61074 - 815-885-3008
 604 PREPARED ST. - ST. LOUIS, MO 63105 - 314-433-4426
 E-MAIL: info@wendlerengineering.com

WENDLER ENGINEERING SERVICES, INC.
 Structural & Civil Engineers - Land Surveying - Environmental Services
 Illinois Professional Design Firm No. 184-000848

1968 - 2007
 AFTER
39
 YEARS
 WE'RE STILL
 "Turning Ideas...
 ...Into Reality!"