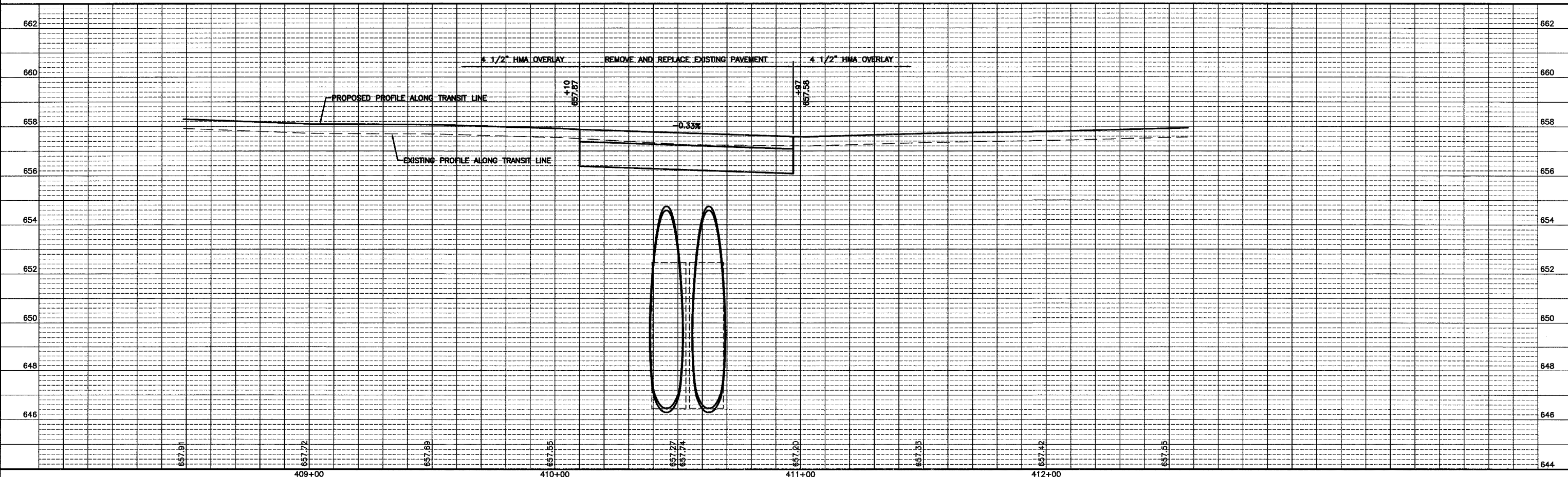
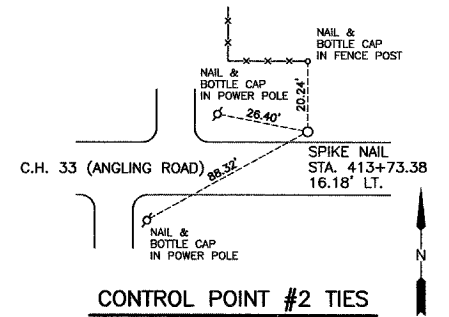
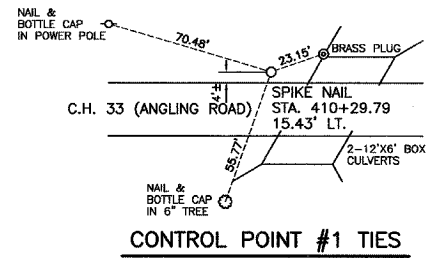


BENCHMARK "B"
20P NAIL IN POWER POLE AT THE S.W.
CORNER OF C.H. 33 (ANGLING ROAD)
AND 3200E ROAD
ELEV. 655.52

BENCHMARK "BRASS PLUG"
BRASS PLUG IN N.W. WINGWALL OF
EXISTING BOX CULVERT.
ELEV. 654.00

STA. 410+54.00
REMOVE EXISTING STRUCTURE
(DOUBLE 12' X 6' CONCRETE BOX CULVERT)
INSTALL 2- PIPE CULVERTS, CLASS D
TYPE 2 EQUIVALENT ROUND-SIZE 120"
SEE SHEETS 22-24 FOR DETAILS



DRAWN BY: L.A.G.
CHECKED BY: J.K.C.

CAD/.DWG: PP-CULV
DATE: 04/07

REVISIONS	
DATE	BY

CHAMLIN & ASSOCIATES

PERU MORRIS
ILLINOIS

C.H. 33 (ANGLING ROAD)
2007
SECTION 05-00198-00-RS

PLAN AND PROFILE STA. 408+50 TO STA. 412+50

SCALE: AS NOTED
FILE NO.: 6813.00Y-1
SHEET 17
OF 33