

Sheet 15
87350

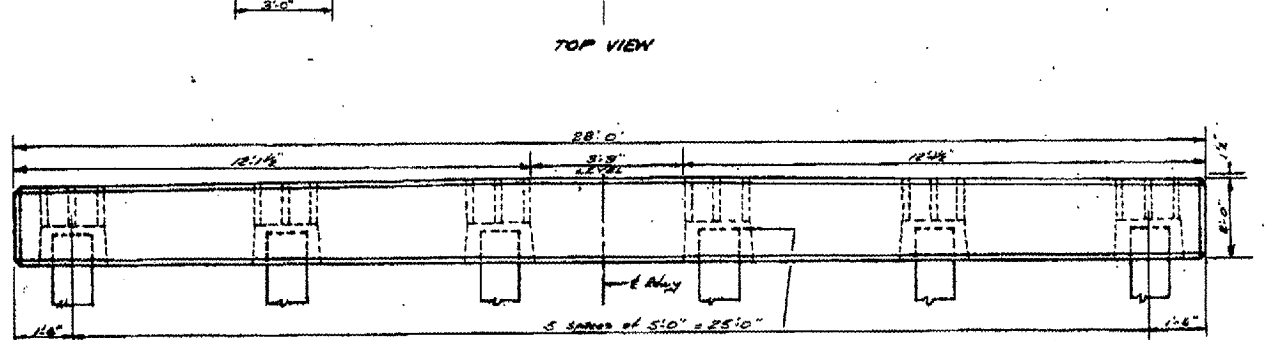
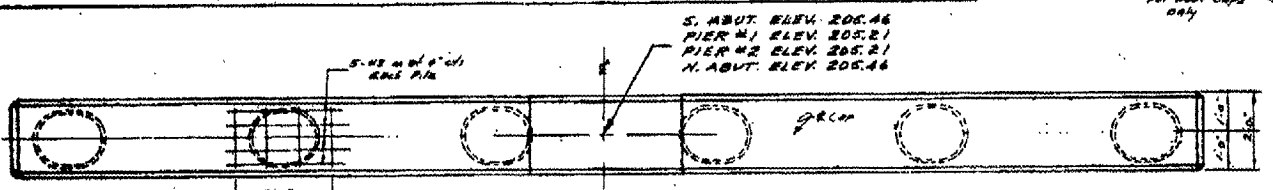
GENERAL NOTES

Precast Concrete Caps are to be made 18" 18" 24" 24" 30" 6" 6" Precast Slabs and 15" 15" 15" 15" Precast Concrete Piling

Inserts are Richmond S&W E&W Anchor 1" Vertical Spacing PILE IS 2" x 8" x 16" 1/2" thick in place to be removed shortly after casting. Slabs are placed in place only. Inserts are to be placed at each outside edge and at center. Form work to be provided to Standard Precast Bridge Slabs.

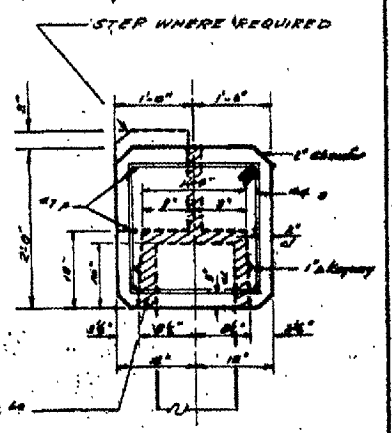
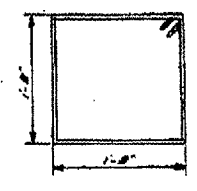
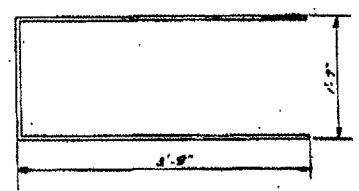
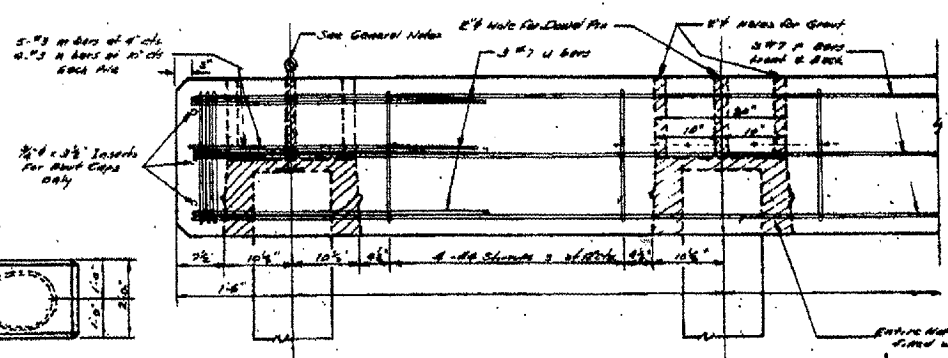
Grout mix: 1 Part Sand 1 Part Grout

DOUBLE RAILS FOR ABUTMENT CAPS ON E OF CAP



CUT OFF S. ABUT. ELEV. 206.17
CUT OFF PIER #1 ELEV. 208.92
CUT OFF PIER #2 ELEV. 208.92
CUT OFF N. ABUT. ELEV. 206.17

6 PILE - PRECAST CAP DETAILS



BILL OF MATERIAL

Qty	Item	Size	Length	Weight
1	U	#7	27'-0"	1150
1	S	#7	27'-0"	1150
1	U	#7	27'-0"	1150
1	S	#7	27'-0"	1150
1	U	#7	27'-0"	1150
1	S	#7	27'-0"	1150

CONCRETE: 1000
REINFORCEMENT: 220
TOTAL WEIGHT: 2200

DESIGN STRESSES

$f_c = 1800 \text{ PSI}$
 $f_s = 4500 \text{ PSI}$
 $f_p = 20000 \text{ PSI}$

Existing Structure 850-3404 Abutment Sheet