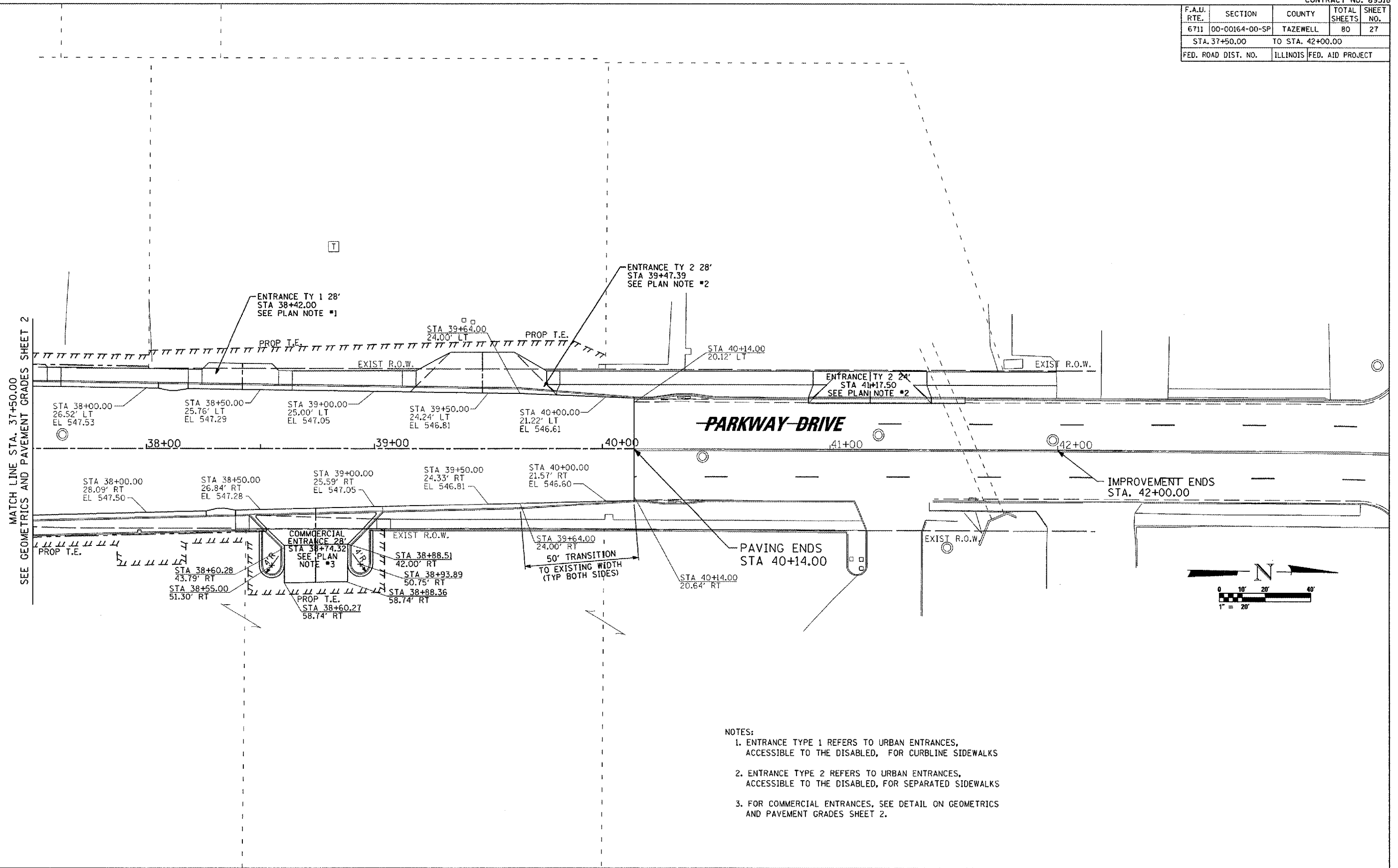


F.A.J. RTE.	SECTION	COUNTY	TOTAL SHEETS	SHEET NO.
6711	00-00164-00-SP	TAZEWELL	80	27
STA. 37+50.00		TO STA. 42+00.00		
FED. ROAD DIST. NO.		ILLINOIS	FED. AID PROJECT	



- NOTES:
- ENTRANCE TYPE 1 REFERS TO URBAN ENTRANCES, ACCESSIBLE TO THE DISABLED, FOR CURBLINE SIDEWALKS
 - ENTRANCE TYPE 2 REFERS TO URBAN ENTRANCES, ACCESSIBLE TO THE DISABLED, FOR SEPARATED SIDEWALKS
 - FOR COMMERCIAL ENTRANCES, SEE DETAIL ON GEOMETRICS AND PAVEMENT GRADES SHEET 2.