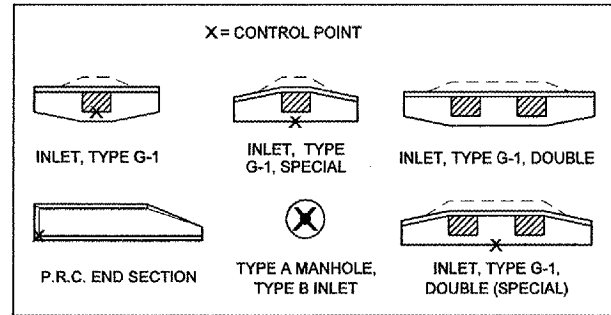
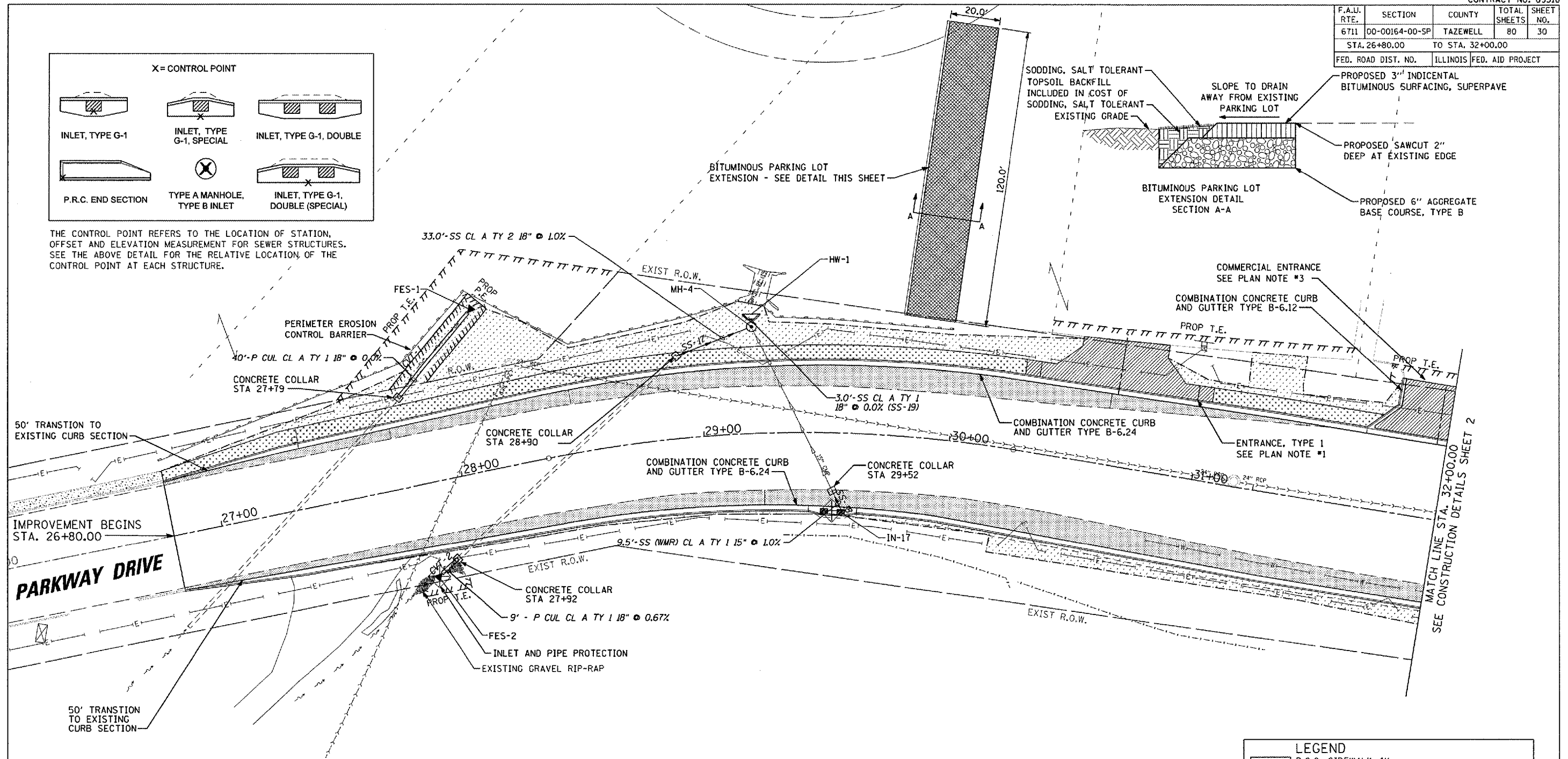


F.A.U. RTE.	SECTION	COUNTY	TOTAL SHEETS	SHEET NO.
6711	00-00164-00-SP	TAZEWELL	80	30
STA. 26+80.00		TO STA. 32+00.00		
FED. ROAD DIST. NO.		ILLINOIS FED. AID PROJECT		

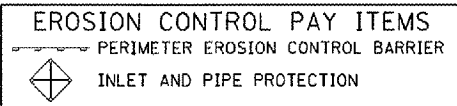


THE CONTROL POINT REFERS TO THE LOCATION OF STATION, OFFSET AND ELEVATION MEASUREMENT FOR SEWER STRUCTURES. SEE THE ABOVE DETAIL FOR THE RELATIVE LOCATION OF THE CONTROL POINT AT EACH STRUCTURE.



PARKWAY DRIVE

- NOTES: 1. ALL CURB INLETS ABUTTING P.C.C. SIDEWALK ARE TO BE TYPE G-1 UNLESS OTHERWISE NOTED. ALL CURB INLETS NOT ABUTTING SIDEWALK ARE TO BE TYPE G-1, SPECIAL, UNLESS OTHERWISE NOTED.
 2. ENTRANCE TYPE 1 DENOTES URBAN ENTRANCES, ACCESSIBLE TO THE DISABLED, FOR CURBLINE SIDEWALKS
 3. FOR COMMERCIAL ENTRANCE SEE DETAIL ON GEOMETRICS AND PAVEMENT GRADES SHEET 2



STRUCTURE SCHEDULE					
STRUCTURE ID	IN-17	MH-4	FES-1	FES-2	HW-1
ALIGNMENT	PARKWAY	PARKWAY	PARKWAY	PARKWAY	PARKWAY
STATION	29+52.86	29+20.80	28+09.00	27+84.18	29+20.83
OFFSET	29.60' R	43.50' L	60.00' L	36.90' R	46.30' L
TYPE	INL TY G-1 DBL SP	MH TY A 4'	18" PCC FES	18" PCC FES	D18-1 1/2 HEADWALL
F & G	DIAGONAL	T1 CL	---	---	---
CONTROL EL.	548.91	547.00	543.33	545.80	544.42
	544.63	544.42 (S)	---	---	---
INV. EL.	---	544.42 (E)	---	---	---
	---	544.42 (W)	---	---	---
REMARKS	---	---	---	---	---

LEGEND

- P.C.C. SIDEWALK 4"
- P.C.C. DRIVEWAY PAVT 6"
- INCIDENTAL BITUMINOUS SURFACING, SUPERPAVE
- P.C.C. BASE COURSE 8"
- PAVEMENT PATCHING, 12"
- SODDING, SALT TOLERANT

