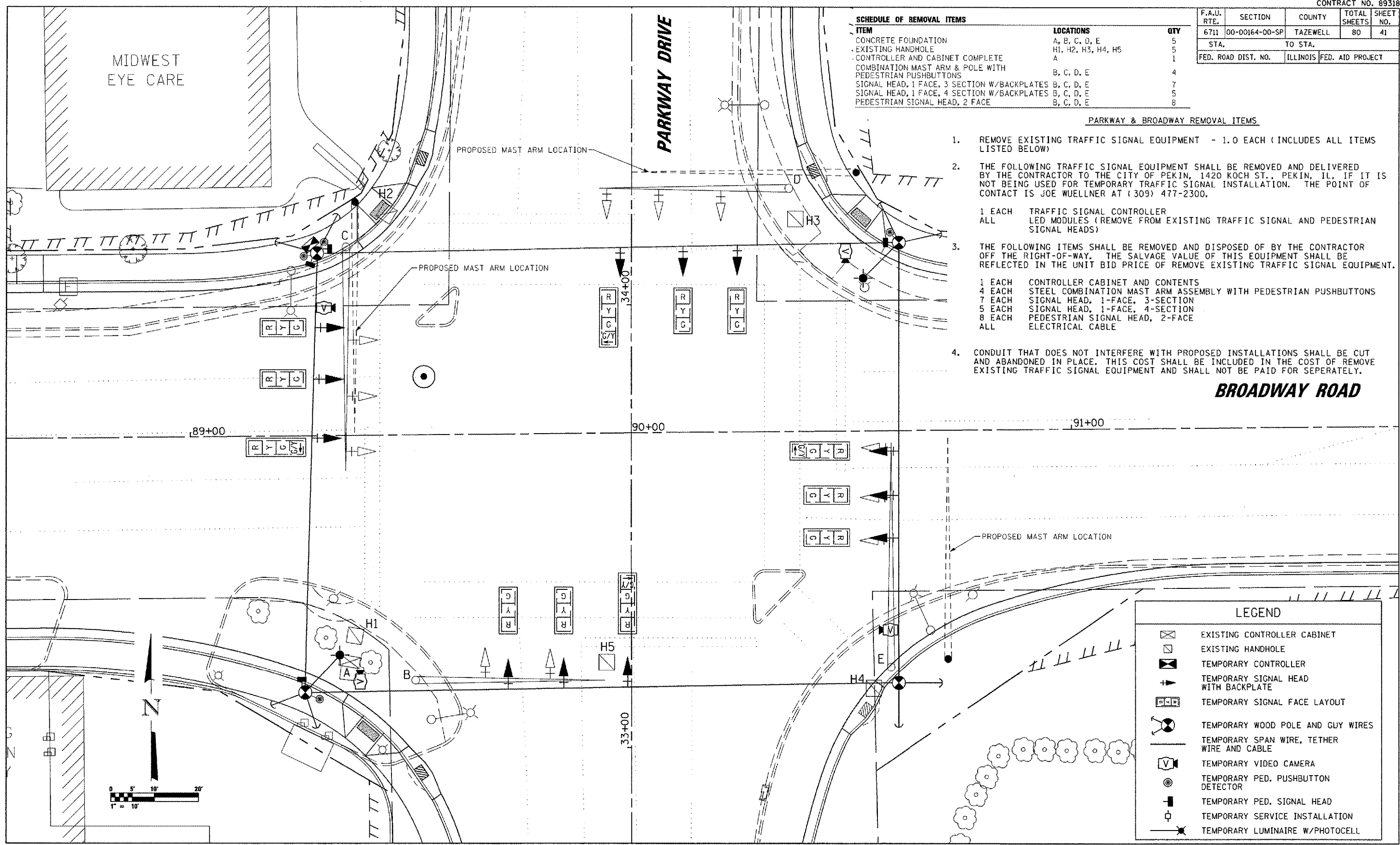


F.A.U. RTE.	SECTION	COUNTY	TOTAL SHEETS	SHEET NO.
6711	00-00164-00-SP	TAZEWELL	80	41
STA.		TO STA.		
FED. ROAD DIST. NO.		ILLINOIS	FED. AID PROJECT	

ITEM	LOCATIONS	QTY
CONCRETE FOUNDATION	A, B, C, D, E	5
EXISTING HANDHOLE	H1, H2, H3, H4, H5	5
CONTROLLER AND CABINET COMPLETE	A	1
COMBINATION MAST ARM & POLE WITH PEDESTRIAN PUSHBUTTONS	B, C, D, E	4
SIGNAL HEAD, 1 FACE, 3 SECTION W/BACKPLATES	B, C, D, E	7
SIGNAL HEAD, 1 FACE, 4 SECTION W/BACKPLATES	B, C, D, E	5
PEDESTRIAN SIGNAL HEAD, 2 FACE	B, C, D, E	8

**PARKWAY & BROADWAY REMOVAL ITEMS**

- REMOVE EXISTING TRAFFIC SIGNAL EQUIPMENT - 1.0 EACH (INCLUDES ALL ITEMS LISTED BELOW)
- THE FOLLOWING TRAFFIC SIGNAL EQUIPMENT SHALL BE REMOVED AND DELIVERED BY THE CONTRACTOR TO THE CITY OF PEKIN, 1420 KOCH ST., PEKIN, IL, IF IT IS NOT BEING USED FOR TEMPORARY TRAFFIC SIGNAL INSTALLATION. THE POINT OF CONTACT IS JOE WUELLNER AT (309) 477-2300.
  - 1 EACH TRAFFIC SIGNAL CONTROLLER
  - ALL LED MODULES (REMOVE FROM EXISTING TRAFFIC SIGNAL AND PEDESTRIAN SIGNAL HEADS)
- THE FOLLOWING ITEMS SHALL BE REMOVED AND DISPOSED OF BY THE CONTRACTOR OFF THE RIGHT-OF-WAY. THE SALVAGE VALUE OF THIS EQUIPMENT SHALL BE REFLECTED IN THE UNIT BID PRICE OF REMOVE EXISTING TRAFFIC SIGNAL EQUIPMENT.
  - 1 EACH CONTROLLER CABINET AND CONTENTS
  - 4 EACH STEEL COMBINATION MAST ARM ASSEMBLY WITH PEDESTRIAN PUSHBUTTONS
  - 7 EACH SIGNAL HEAD, 1-FACE, 3-SECTION
  - 5 EACH SIGNAL HEAD, 1-FACE, 4-SECTION
  - 8 EACH PEDESTRIAN SIGNAL HEAD, 2-FACE
  - ALL ELECTRICAL CABLE
- CONDUIT THAT DOES NOT INTERFERE WITH PROPOSED INSTALLATIONS SHALL BE CUT AND ABANDONED IN PLACE. THIS COST SHALL BE INCLUDED IN THE COST OF REMOVE EXISTING TRAFFIC SIGNAL EQUIPMENT AND SHALL NOT BE PAID FOR SEPERATELY.



LEGEND	
	EXISTING CONTROLLER CABINET
	EXISTING HANDHOLE
	TEMPORARY CONTROLLER
	TEMPORARY SIGNAL HEAD WITH BACKPLATE
	TEMPORARY SIGNAL FACE LAYOUT
	TEMPORARY WOOD POLE AND GUY WIRES
	TEMPORARY SPAN WIRE, TETHER WIRE AND CABLE
	TEMPORARY VIDEO CAMERA
	TEMPORARY PED. PUSHBUTTON DETECTOR
	TEMPORARY PED. SIGNAL HEAD
	TEMPORARY SERVICE INSTALLATION
	TEMPORARY LUMINAIRE W/PHOTOCELL